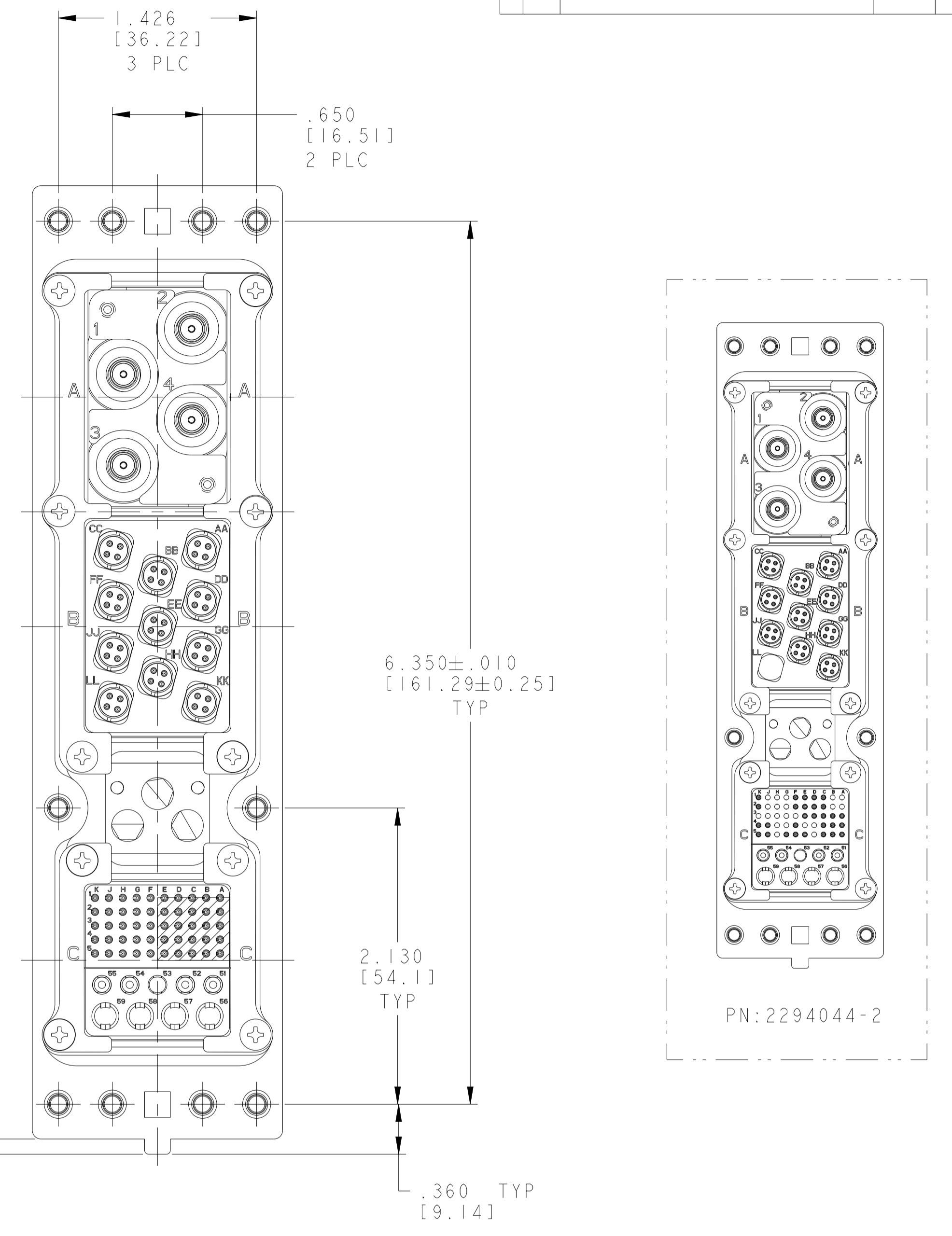
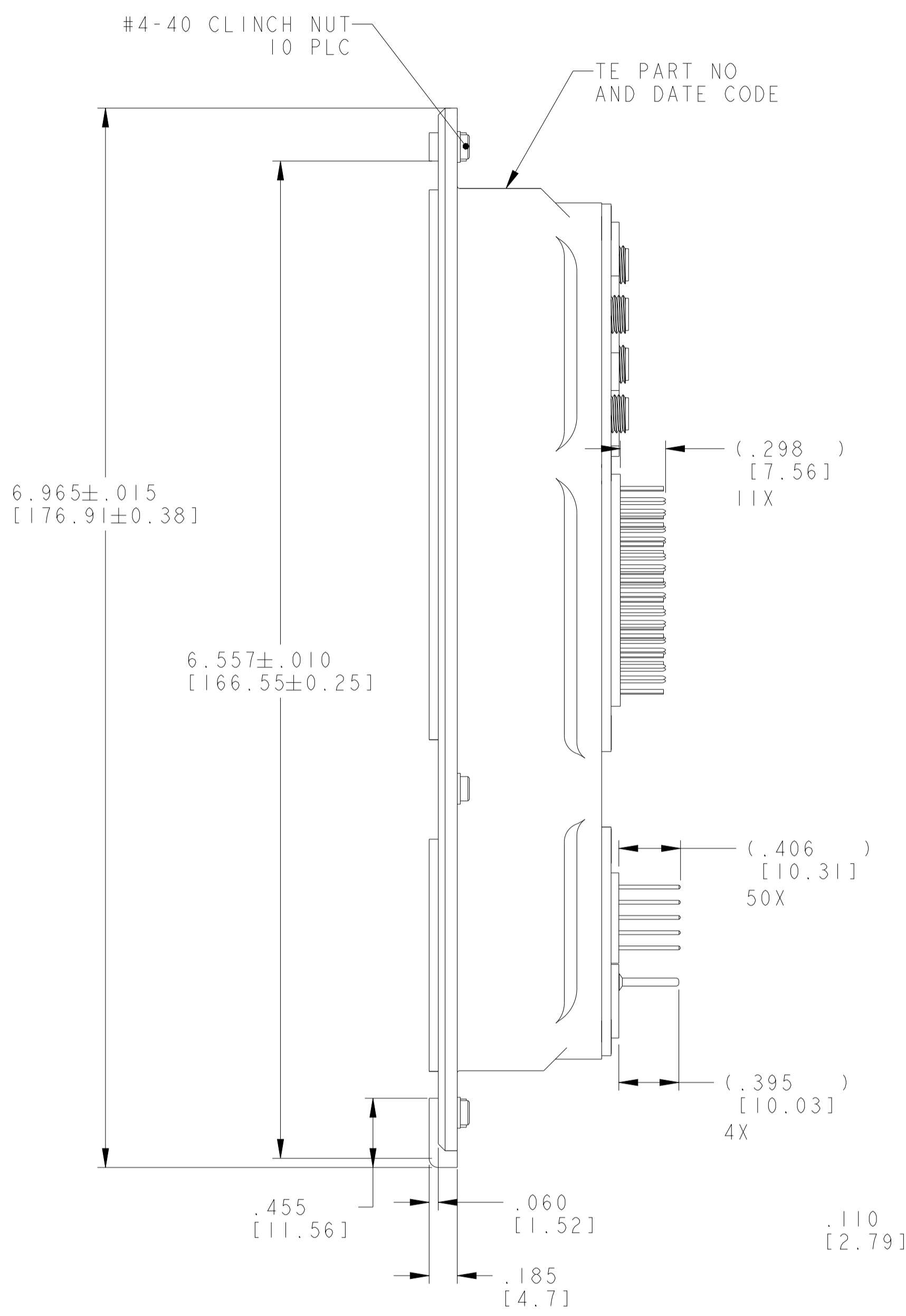
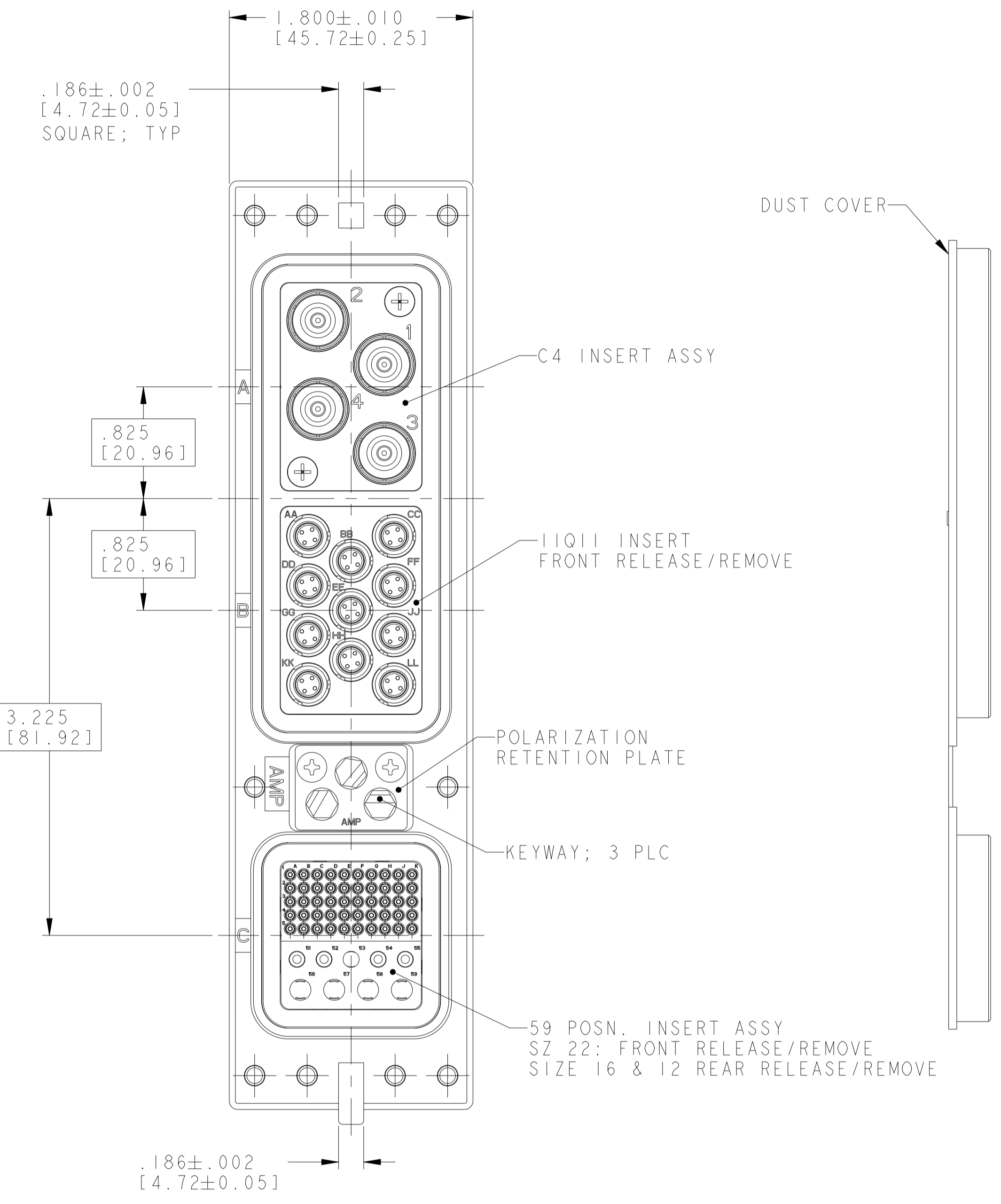


REVISIONS				
P	LTN	DESCRIPTION	DATE	APVD
B	ECO-16-004494		05APR2016	KG MS
C	REV PER ECO 21-007977		26AUG2021	LN DC



- △ ASSEMBLED CONNECTOR FEATURES COMPLY WITH ARINC 600 SPECIFICATION.
- 2. KEYING INSTALLED IN POSITION "52".
- 3. CONNECTOR IS SUPPLIED WITH A DUST COVER INSTALLED FOR SHIPPING.
- △ THE FOLLOWING CONTACTS ARE INSTALLED:
 CAVITY A: SIZE 1 SMA CONTACT CONTACT; TE P/N 446748-1; QTY = 4
 CAVITY B: SIZE 8 QUADRAX CONTACT; TE P/N 1445626-2; QTY = 11
 CAVITY C: SIZE 22 POSTED SOCKET CONTACT; TE PART NO. 211431-6; QTY = 50
 SIZE 16 POSTED PIN CONTACT; TE PART NO. 1663128-8; QTY = 4
 (LOADED IN POSITIONS 51, 52, 54 & 55)
- △ THE FOLLOWING CONTACTS ARE INSTALLED:
 CAVITY A: SIZE 1 SMA CONTACT CONTACT; TE P/N 446748-1; QTY = 4
 CAVITY B: SIZE 8 QUADRAX CONTACT; TE P/N 1445626-2; QTY = 10
 CAVITY C: SIZE 22 POSTED SOCKET CONTACT; TE PART NO. 211431-6; QTY = 29
 SIZE 16 POSTED PIN CONTACT; TE PART NO. 1663128-8; QTY = 4
 (LOADED IN POSITIONS 51, 52, 54 & 55)

△	"52"	2294044-2
△	"52"	2294044-1
	KEYING POSITION	PART NUMBER

COMPONENT	MATERIAL	FINISH	REMARKS
11011 INSERT AND C4 INSERT	ALUMINUM ALLOY PER QQ-A225/6	ELECTROLESS NICKEL PER MIL-C-26074	ALL FRONT RELEASE/REMOVE
59 POSITION INSERT	THERMOSET	--	ALL FRONT RELEASE/REMOVE
POLARIZATION KEYWAY	ZINC ALLOY PER ASTM-B-86	--	--
KEYWAY RETAINER PLATE	ALUMINUM ALLOY	BLUE ANODIZED PER MIL-A-8625	--
#4-40 CLINCH NUT QTY = 10	STEEL	ZINC PLATED WITH SUPP YELLOW TRIVALENT CHROMATE	--
SHELL AND RETENTION PLATES	ALUMINUM ALLOY PER ASTM-B-85	ELECTROLESS NICKEL PER AMS-C-26074	--

THIS DRAWING IS A CONTROLLED DOCUMENT.

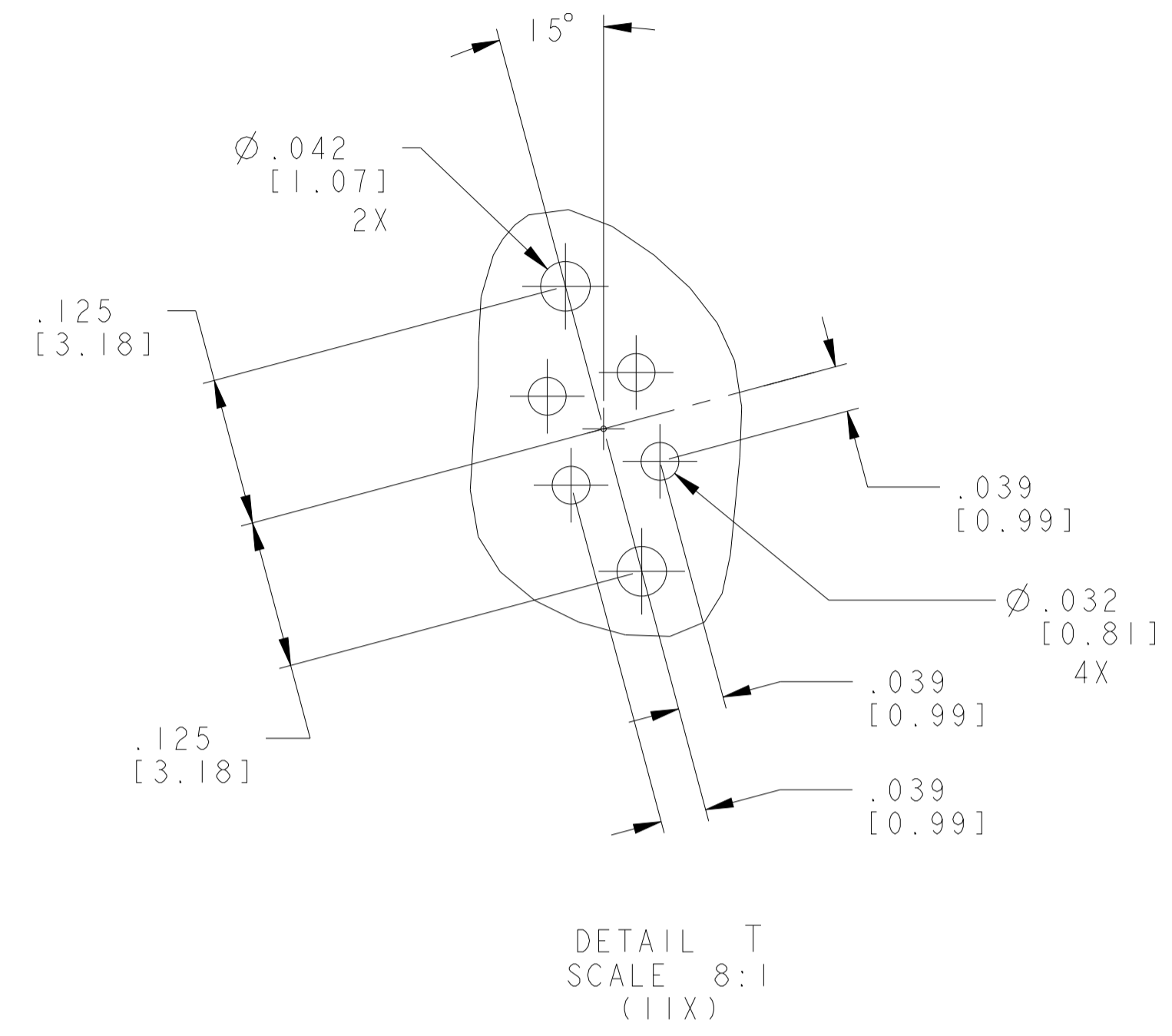
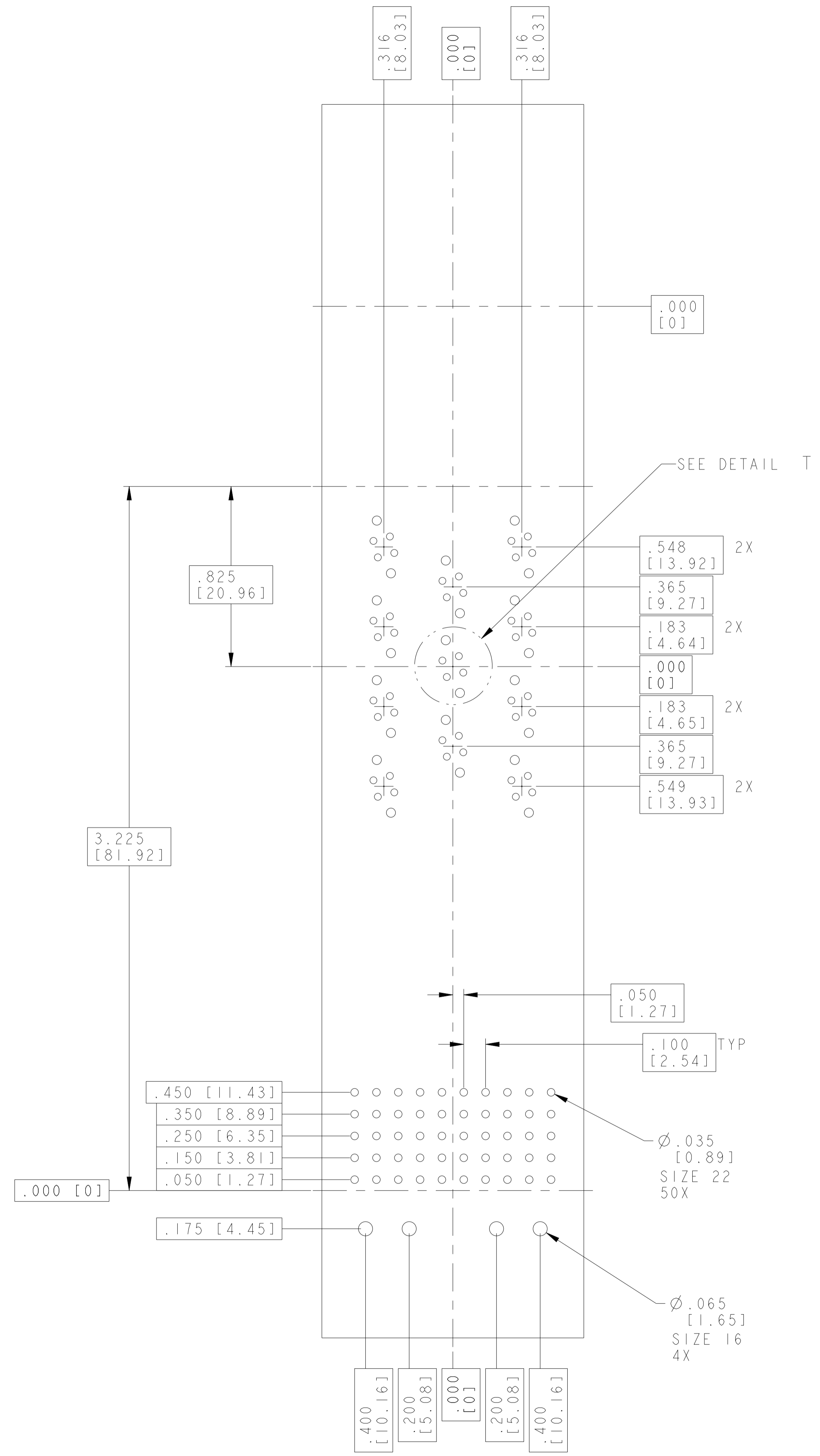
APVD: C.C. THOMAS 7-22-15, W. BERNHART 7-22-15, W. BERNHART 7-22-15

NAME: RECEPTACLE ASSY, SIZE 2, ARINC 600 (C4/11011/59)

SIZE: A | 00779 | C=2294044

SCALE: 3:2 SHEET 1 OF 2 REV C

REVISIONS				
P	LTN	DESCRIPTION	DATE	APVD
-		SEE SHEET 1	-	-



THIS DRAWING IS A CONTROLLED DOCUMENT.		DWN: C.C. THOMAS 8-12-15	TE Connectivity
DIMENSIONS: I.D.		CHK: M. SPICER 8-12-15	
		APVD: M. SPICER 8-12-15	NAME: RECEPTACLE ASSY, SIZE 2, ARINC 600 (C4/11011/59)
0 PLC ± 1 PLC ± 2 PLC ± 3 PLC ±.005 (0.13) 4 PLC ± ANGLES ± FINISH ±		TOLERANCES UNLESS OTHERWISE SPECIFIED:	RESTRICTED TO
MATERIAL: SEE TABLE		WEIGHT: -	SIZE: A 00779 C=2294044
SEE TABLE		CUSTOMER DRAWING	SCALE: 3:2 SHEET 2 OF 2 REV C