



End plate, Width: 1.5 mm, Colour: Beige

Business data

Article number	<u>17293.2</u>
Article name	SAPD 10 BG
GTIN (EAN)	4044211190859
Packaging unit	20
Quantity unit	PC
Weight per piece (not including packaging)	3.8 g
Weight per piece (including packaging)	3.9 g
Unit of weight	G
Customs number	85389099
Country of origin	DE
Prio-Article	17293.2
Product description	End plate

Technical data

Dimensions

Length	72 mm
Width	1.5 mm
Height	64.5 mm

Materials

Material	Polyamide 6.6
Flammability class UL 94	V-0
Working temperature, min.	-40 °C
Working temperature, max.	120 °C

Further technical data

Designed as end plate	✓
Snap-on available	✓

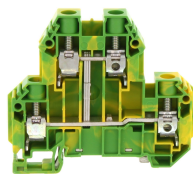
Environmental Product Compliance

REACH Conform	Yes
REACH Candidate Substance Note	No
RoHS Conform	Yes

Media

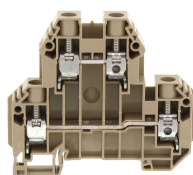
Accessories

##INVERSE##CONTA-CONNECT



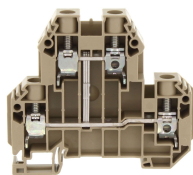
Protective-earth double-level terminal, Screw connection, Mounting type: Mounting rail TS 35/7.5, Rated cross-section: 10 mm², Width: 10.1 mm, Colour: Green-yellow

Article number	Article name	GTIN (EAN)	Packaging unit
17192.2	SSLD 10 GNYE	4044211190804	50 ST



Double-level terminal, Screw connection, Mounting type: Mounting rail TS 35/7.5, Rated cross-section: 10 mm², Width: 10.1 mm, Colour: Beige

Article number	Article name	GTIN (EAN)	Packaging unit
17190.2	SRKD 10 BG	4044211190767	50



Double-level terminal, Screw connection, Mounting type: Mounting rail TS 35/7.5, Rated cross-section: 10 mm², Width: 10.1 mm, Colour: Beige

Article number	Article name	GTIN (EAN)	Packaging unit
17191.2	SRKD 10/SV BG	4044211190781	50