

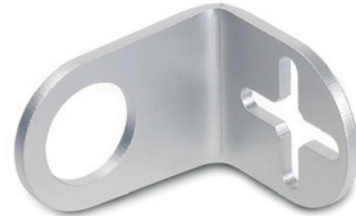
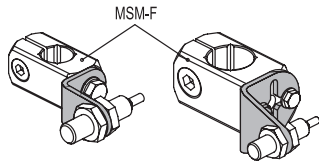
- 1
- 2
- 3
- 4
- 5
- 6
- 7
- 8
- 9
- 10
- 11
- 12
- 13
- 14
- 15
- 16
- 17
- 18

MATERIAL

Sandblasted AISI 304 stainless steel, matte finish.

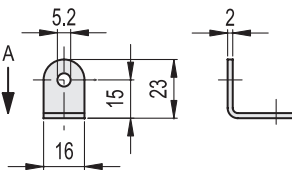
FEATURES AND APPLICATIONS

In MSM-LA-30 sensor holders, the cross-shaped hole provides a more precise regulation for fixing to connecting clamps MSM-F (see page 919) and it also allows the use of two clamping screws.

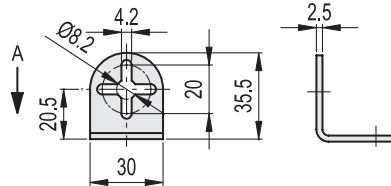


Conversion Table	
1 mm = 0.039 inch	
d	
mm	inch
8	0.31
12	0.47
18	0.71
30	1.18

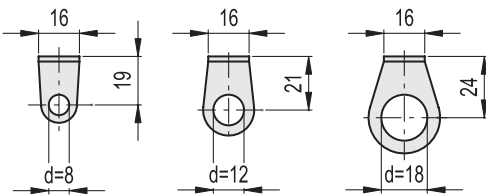
MSM-LA-16



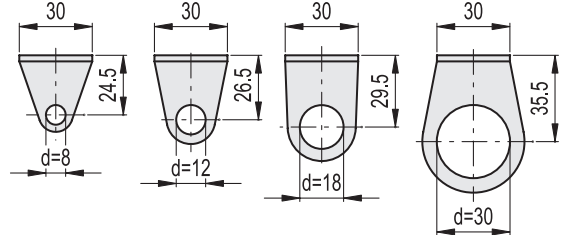
MSM-LA-30



Views on A



Views on A



Code	Description	d	⚖️
500351	MSM-LA-B8-16	8	9
500355	MSM-LA-B12-16	12	10
500359	MSM-LA-B18-16	18	13
500353	MSM-LA-B8-30	8	24
500357	MSM-LA-B12-30	12	26
500361	MSM-LA-B18-30	18	30
500363	MSM-LA-B30-30	30	36