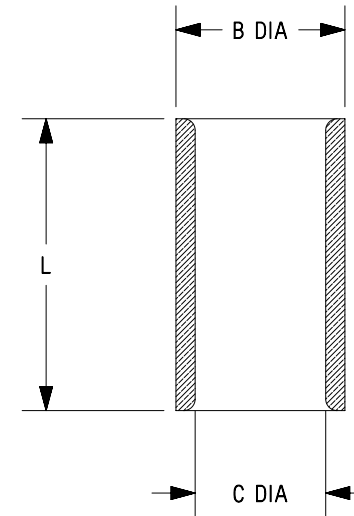


THIS COPY IS PROVIDED ON A RESTRICTED BASIS AND IS NOT TO BE USED IN ANY WAY DETRIMENTAL TO THE INTERESTS OF PANDUIT CORP.

PANDUIT PART #	WIRE COMBINATION (COMBINATION OF ANY TWO)		DIMENSIONS in. [mm]		
			L ± .03 [0,8]	B ± .01 [0,3]	C ± .01 [0,3]
	AWG	mm ²			
PS18	#22 - #18	0,5 - 1,0	.29 [7,4]	.13 [3,3]	.10 [2,5]
PS16	#20 - #16	0,8 - 2,0	.29 [7,4]	.16 [4,1]	.12 [3,0]
PS12	#14 - #12	2,5 - 4,0	.38 [9,7]	.22 [5,6]	.17 [4,3]



NOTES:

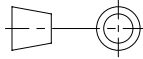
- USED WITH:
A. SOLID OR STRANDED COPPER WIRE
- MATERIAL:
A. TIN PLATED BRASS
- INSTALLATION TOOLS:
A. UL LISTED AND CSA CERTIFIED: CT-100, CT-200
B. PANDUIT APPROVED: CT-260
- WIRE STRIP LENGTH: 5/16 ^{+1/32}₋₀ [7,9 ^{+0,8}₋₀]
7/16 ^{+1/32}₋₀ [11,1 ^{+0,8}₋₀] FOR PS12
- SEE www.panduit.com FOR PACKAGE QUANTITIES INDICATED BY PART NUMBER SUFFIX
- DIMENSIONS IN BRACKETS ARE METRIC EQUIVALENT



LISTED
587H
E52164



CERTIFIED
LR31212

TITLE										Non Insulated Parallel Splice																			
										CUSTOMER DRAWING																			
ITEM REVISION NAME					N41339BA/09																								
DATASET FILE NAME					N41339BA_DC_09A										PANDUIT														
					 THIRD ANGLE PROJECTION																								
MATERIAL										SEE NOTES										DRAWING NUMBER									
																				A41339									
DRAWN BY		DATE		CHK		SCALE				DRAWN BY		DATE		CHK		SCALE				SHEET 1 OF 1		SIZE							
DRL		-		-		N.T.S.				DRL		-		-		N.T.S.				SHEET 1 OF 1		A							

REV	DATE	BY	CHK	APR	DESCRIPTION	ECN
09A	01.12.21	BDK	SKB	JADE	REVISED AND REDRAWN	093894

2

1

2

1

A-SIZE CUSTOMER

B

B

A

A