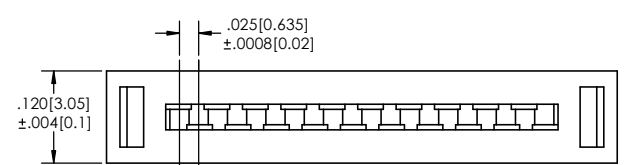
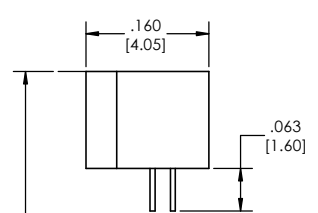
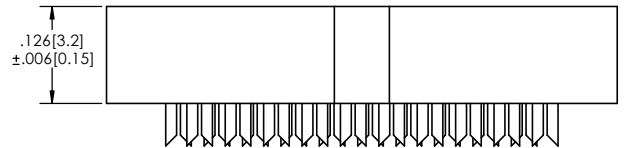
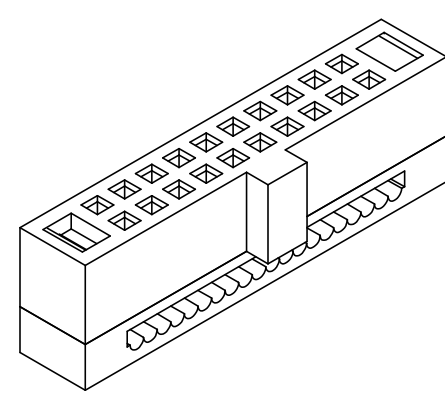
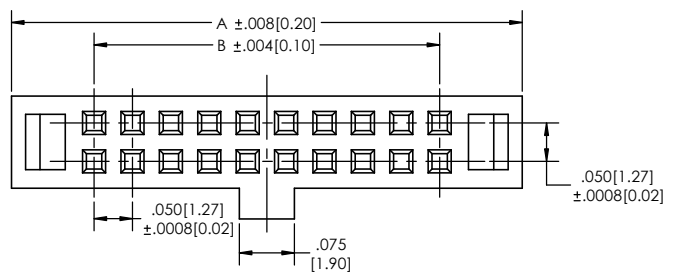
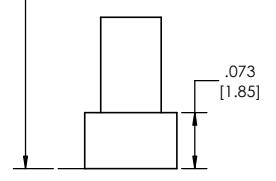
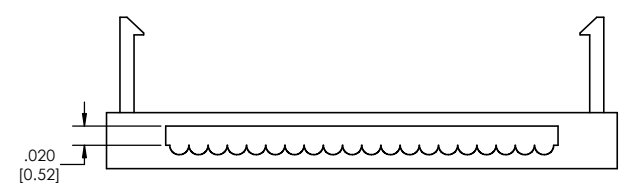


8 7 6 5 4 3 2 1

F E D C B A



.200 [5.08]
Terminated Height



IDS-5 **XX** - **D** - **02** - **F** - **02** - **LF**
(A) (B) (C) (D) (E) (F)

- A. Pins Per Row
- 3 through 32
- B. Row Specification
- D= Double Row
- C. Style
- 02= Black
- D. Plating Options
- See Plating Options below
- E. Options
- 02= Without strain relief
- F. Lead free

Plating options	
F	Gold Flash over Entire Pin

Specifications:
 Current Rating: 1.0 Ampere AC/DC
 Insulation Resistance: 100 m Ohms Min.
 Dielectric Withstanding: 500V AC Min.
 Contact Resistance: 20M Ohms Max.
 Operation Temperature: -40°C to +105°C
 Terminated with: .025" [0.635mm] pitch flat ribbon cable
 Voltage Rating: 250V AC/DC

Materials:
 Contact Material: Phosphor Bronze
 Insulator Material: PBT, glass reinforced, rated UL 94V-0, Black

Pins Per Row	Dimensions	
	A	B
3	.315 [8.00]	.100 [2.54]
4	.365 [9.27]	.150 [3.81]
5	.415 [10.54]	.200 [5.08]
6	.465 [11.81]	.250 [6.35]
7	.515 [13.08]	.300 [7.62]
8	.565 [14.35]	.350 [8.89]
9	.615 [15.62]	.400 [10.16]
10	.665 [16.89]	.450 [11.43]
13	.815 [20.70]	.600 [15.24]
14	.865 [21.97]	.650 [16.51]
15	.915 [23.24]	.700 [17.78]
17	1.015 [25.78]	.800 [20.32]
20	1.165 [29.59]	.950 [24.13]
22	1.265 [32.13]	1.050 [26.67]
25	1.415 [35.94]	1.200 [30.48]
26	1.465 [37.21]	1.250 [31.75]
30	1.665 [42.29]	1.450 [36.83]
32	1.765 [44.83]	1.550 [39.37]

Tails may be clipped to achieve specific dimensions.

Products cut to specific sizes are uncancellable/ nonreturnable.
 Parts are subject to change without notice.



PROPRIETARY AND CONFIDENTIAL
 THE INFORMATION CONTAINED IN THIS DRAWING IS THE SOLE PROPERTY OF Major League Electronics. ANY REPRODUCTION IN PART OR AS A WHOLE WITHOUT THE WRITTEN PERMISSION OF Major League Electronics IS PROHIBITED.

UNLESS OTHERWISE SPECIFIED:		NAME		DATE	
DIMENSIONS ARE IN INCHES		DRAWN	EOW	01/23/15	
TOLERANCES:		CHECKED	GWE	01/23/15	
ONE DECIMALS ±.100		ENG APPR.			
TWO DECIMAL ±.010		MFG APPR.			
THREE DECIMAL ±.005		INTERPRET GEOMETRIC TOLERANCING PER:			
FOUR DECIMAL ±.002		MATERIAL			
NEXT ASSY	USED ON	FINISH			
APPLICATION		DO NOT SCALE DRAWING			

ADDRESS:
 2533 Centennial Blvd.
 Jeffersonville, IN 47130
 Phone: 812-670-4174
 Fax: 812-670-4175
 E-Mail: mle@ml-electronics.com



TITLE: IDS-5 Series		REV
SIZE	DWG. NO.	B
C		
SCALE 8:1		SHEET 1 OF 1

8 7 6 5 4 3 2 1