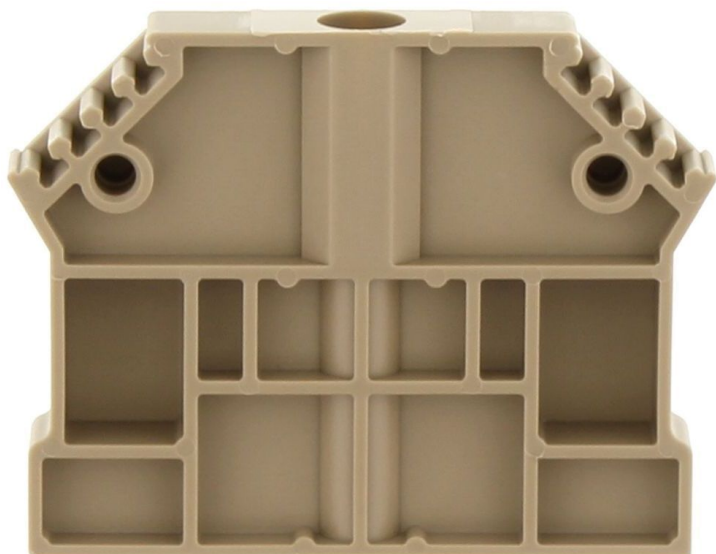


# Data sheet

## 2180.2 EH 4 BG



End support, Mounting type: Mounting surface, Width: 8 mm, Colour: Beige

### Business data

Article number	2180.2
Article name	EH 4 BG
GTIN (EAN)	4044211050023
Packaging unit	50
Quantity unit	PC
Weight per piece (not including packaging)	4.64 g
Weight per piece (including packaging)	4.67 g
Unit of weight	G
Customs number	85389099
Country of origin	DE
Prio-Article	2180.2
Product description	End support

---

### Technical data

---

#### Dimensions

Length	46 mm
Width	8 mm
Terminal width	8.00 mm
Height	36 mm
Hole diameter	3.5 mm

#### Materials

Material	Polyamide 6.6
Flammability class UL 94	V-2
Working temperature, min.	-40 °C
Working temperature, max.	105 °C

#### Further technical data

Mounting type	Mounting face
---------------	---------------

#### Environmental Product Compliance

REACH Conform	yes
REACH Candidate Substance Note	No
RoHS Conform	yes

# Data sheet

## 2180.2 EH 4 BG



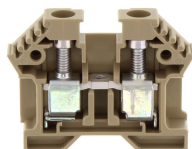
---

### Media

---

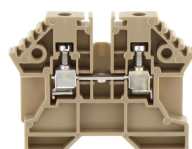
### Accessories

#### ##INVERSE##CONTA-CONNECT



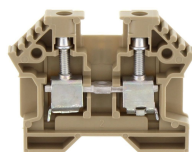
Feed-through terminal for direct mount/block variant, Screw connection, Mounting type: Mounting surface, Rated cross-section: 10 mm<sup>2</sup>, Width: 8 mm, Colour: Beige

Article number	Article name	GTIN (EAN)	Packaging unit
<u>1389.2</u>	KBL 6-10-D BG	4044211044305	100



Feed-through terminal for direct mount/block variant, Screw connection, Mounting type: Mounting surface, Rated cross-section: 2.5 mm<sup>2</sup>, Width: 5 mm, Colour: Beige

Article number	Article name	GTIN (EAN)	Packaging unit
<u>1387.2</u>	KBL 2,5-D BG	4044211044282	100



Feed-through terminal for direct mount/block variant, Screw connection, Mounting type: Mounting surface, Rated cross-section: 4 mm<sup>2</sup>, Width: 6 mm, Colour: Beige

Article number	Article name	GTIN (EAN)	Packaging unit
<u>1388.2</u>	KBL 2,5-4-D BG	4044211044299	100