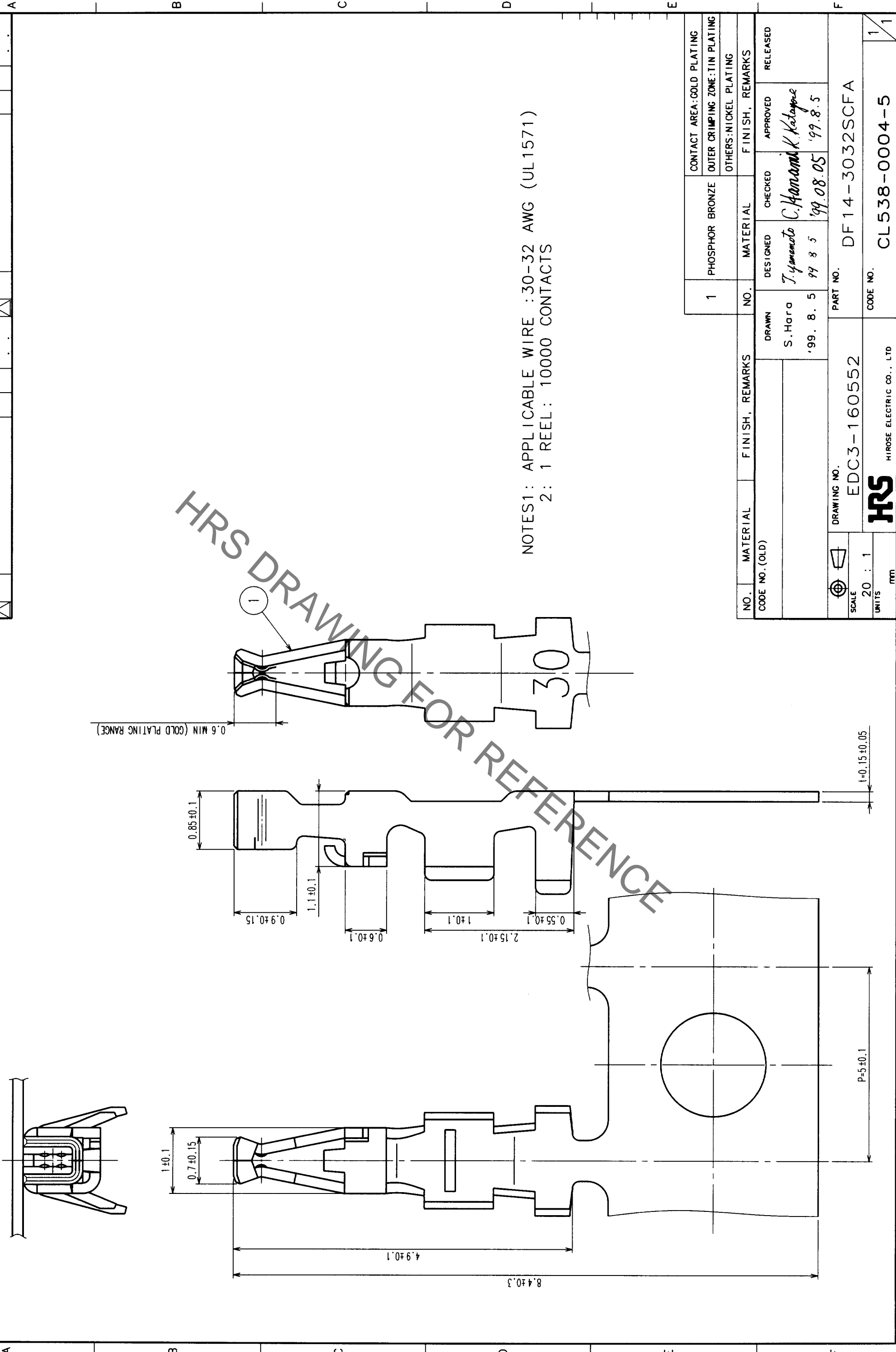


May.1.2023 Copyright 2023 HIROSE ELECTRIC CO., LTD. All Rights Reserved.
 In case of consideration for using Automotive equipment / device which demand high reliability, kindly contact our sales window correspondents.



NOTES1: APPLICABLE WIRE : 30-32 AWG (UL1571)
 2: 1 REEL: 10000 CONTACTS

COUNT	DESCRIPTION OF REVISIONS	BY	CHKD	DATE	COUNT	DESCRIPTION OF REVISIONS	BY	CHKD	DATE
△				..	△				..
△				..	△				..
△				..	△				..

NO.	MATERIAL	FINISH, REMARKS	NO.	MATERIAL	FINISH, REMARKS		
					DESIGNED	CHECKED	APPROVED
1	PHOSPHOR BRONZE						
CONTACT AREA: GOLD PLATING					OUTER CRIMPING ZONE: TIN PLATING		
OTHERS: NICKEL PLATING							
DRAWN		DESIGNED		CHECKED		APPROVED	
S. Hara		T. Yamamoto		C. Hanami		K. Katayama	
'99. 8. 5		'99 8 5		'99. 08. 05		'99. 8. 5	
SCALE		DRAWING NO.		PART NO.		REMARKS	
20 : 1		EDC3-160552		DF14-3032SCFA			
UNITS		HIROSE ELECTRIC CO., LTD		CL538-0004-5		1/1	

TO