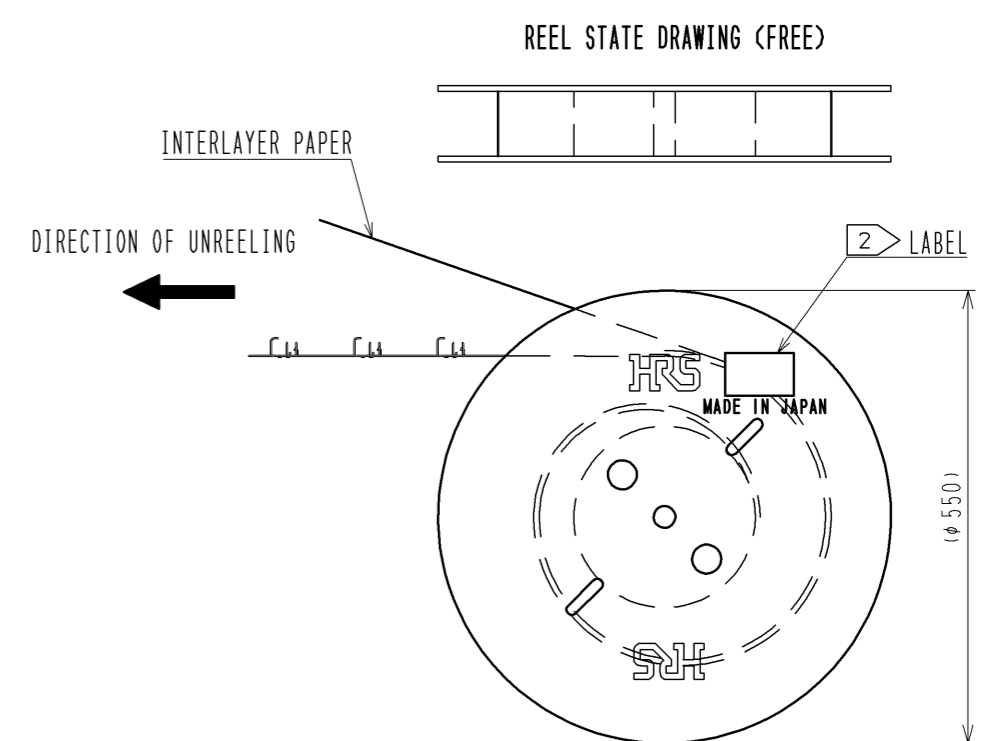
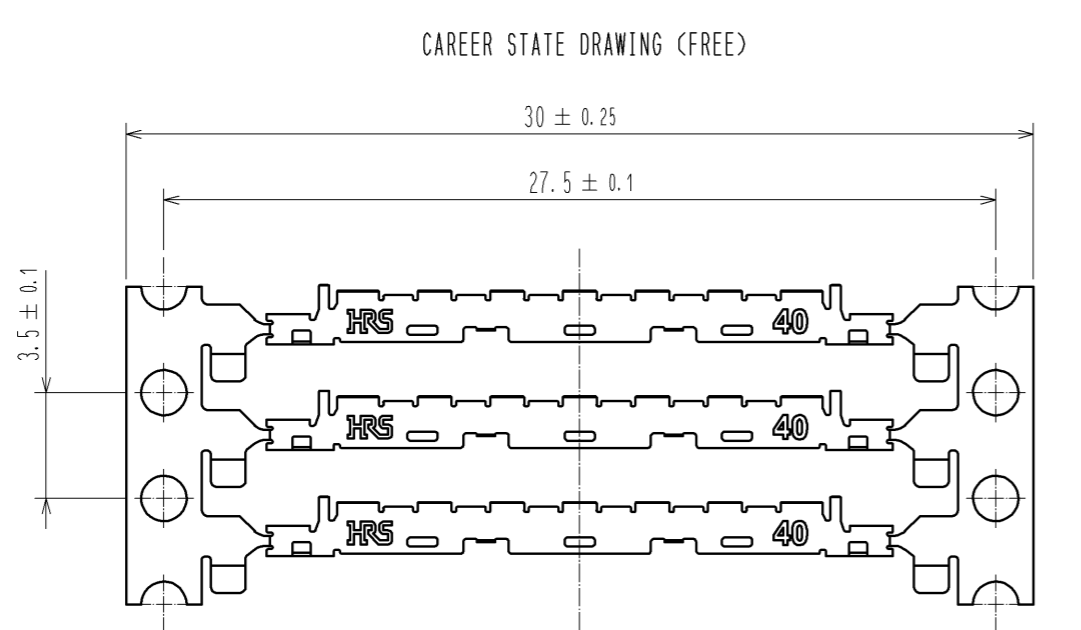
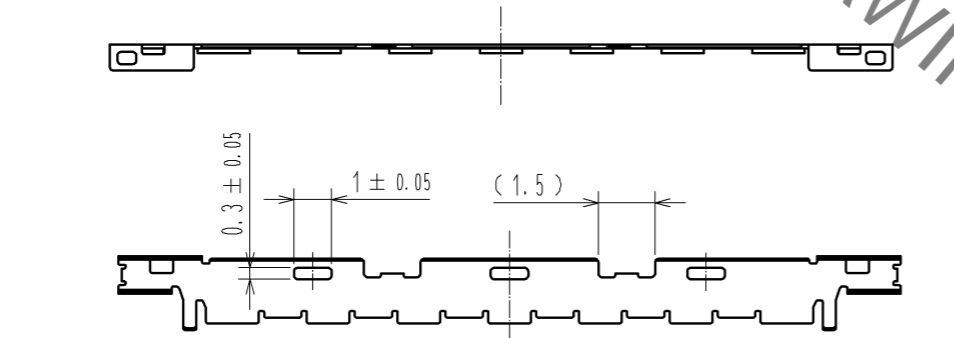
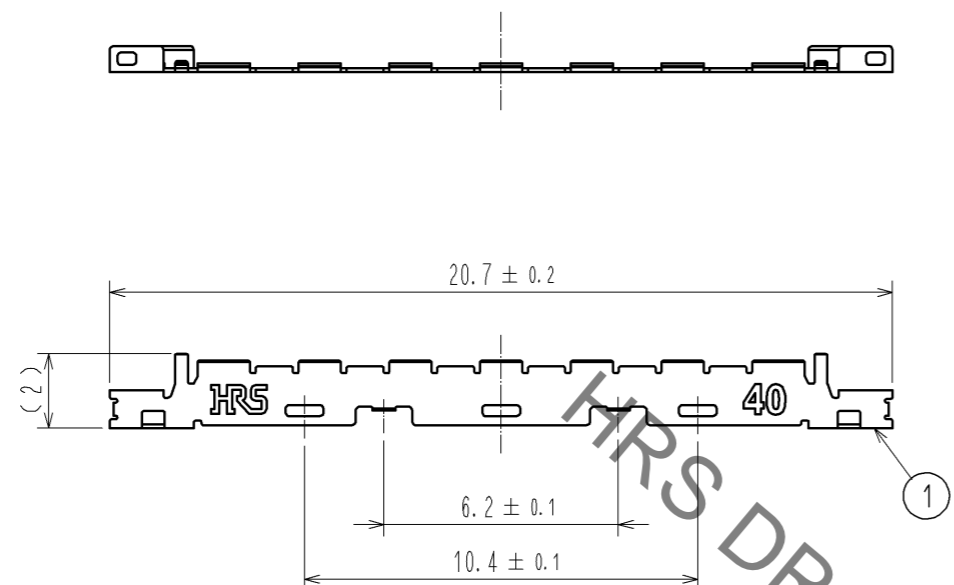


May.1.2023 Copyright 2023 HIROSE ELECTRIC CO., LTD. All Rights Reserved.
In case of consideration for using Automotive equipment / device which demand high reliability, kindly contact our sales window correspondents.



NOTES

1. PER REEL:1,000 COMPONENTS
- 2 THE DETAILS OF THE LABEL ARE SHOWN BELOW.
- 3 THE ASSEMBLY IS COMPLETED BY COMBINING THREE PARTS 'CONNECTOR UNIT, METAL SHIELDING' AND 'LATCH'. REFER TO THE TABLE FOR EACH ITEM No. PART NAME, PART No AND CODE No.
4. DIMENSIONS IN PARENTHESES ARE FOR REFERENCE.

2 LABEL DETAILS (EXAMPLE)

HRS		INSPECTION 検査
CODE No. 品名コード	CL662-8108-6-52	
PART NO. 品名	DF81-40P-SHL(52)	
QTY 数量	1,000 PCS	
PECULIAR 仕様		
Lot No		
SPLICE 継ぎ目		

3

ITEM No.	PART NAME	PART No.	CODE No.
-	CONNECTOR UNIT	DF81D-40P-0.4SD(52)	CL662-8120-1-52
1	METAL SHIELDING	DF81-40P-SHL(52)	CL662-8108-6-52
-	LATCH	DF81-40P-LCH(52)	CL662-8109-9-52

NO.	MATERIAL	FINISH . REMARKS	NO.	MATERIAL	FINISH . REMARKS
			1	SUS	CONTACT AREA :Au PLATING 0.05μm MIN. SOLDERING AREA : Au PLATING 0.05μm MIN. UNDER PLATING :Ni PLATING 0.2μm MIN.

UNITS mm	SCALE 5 : 1	COUNT	DESCRIPTION OF REVISIONS	DESIGNED	CHECKED	DATE
			APPROVED : MH. YAMANE 13.11.26			
			CHECED : MH. TSUCHIDA 13.11.25			
			DESIGNED : AH. MIYAZAKI 13.11.12			
			DRAWN : AH. MIYAZAKI 13.11.12			

DRAWING NO.	PART NO.	CODE NO.
EDC3-345354-02	DF81-40P-SHL(52)	CL662-8108-6-52