



ANATECH ELECTRONICS INC
RF & Microwave Filters & Products

65 MHz LC Bandpass Filter

Part Number: AE65B5339



Electrical Specifications

Center Frequency: 65 MHz
1.5dB Passband: 48 MHz to 82 MHz
Insertion Loss: 1.5dB
VSWR: 1.5:1
Rejection: $\geq 20\text{dB}$ @ 0-37 MHz
Rejection2: $\geq 40\text{dB}$ @ 100 MHz to 160 MHz
Rejection3: $\geq 60\text{dB}$ @ 1600 MHz to 3000 MHz
Impedance: 50 Ohms

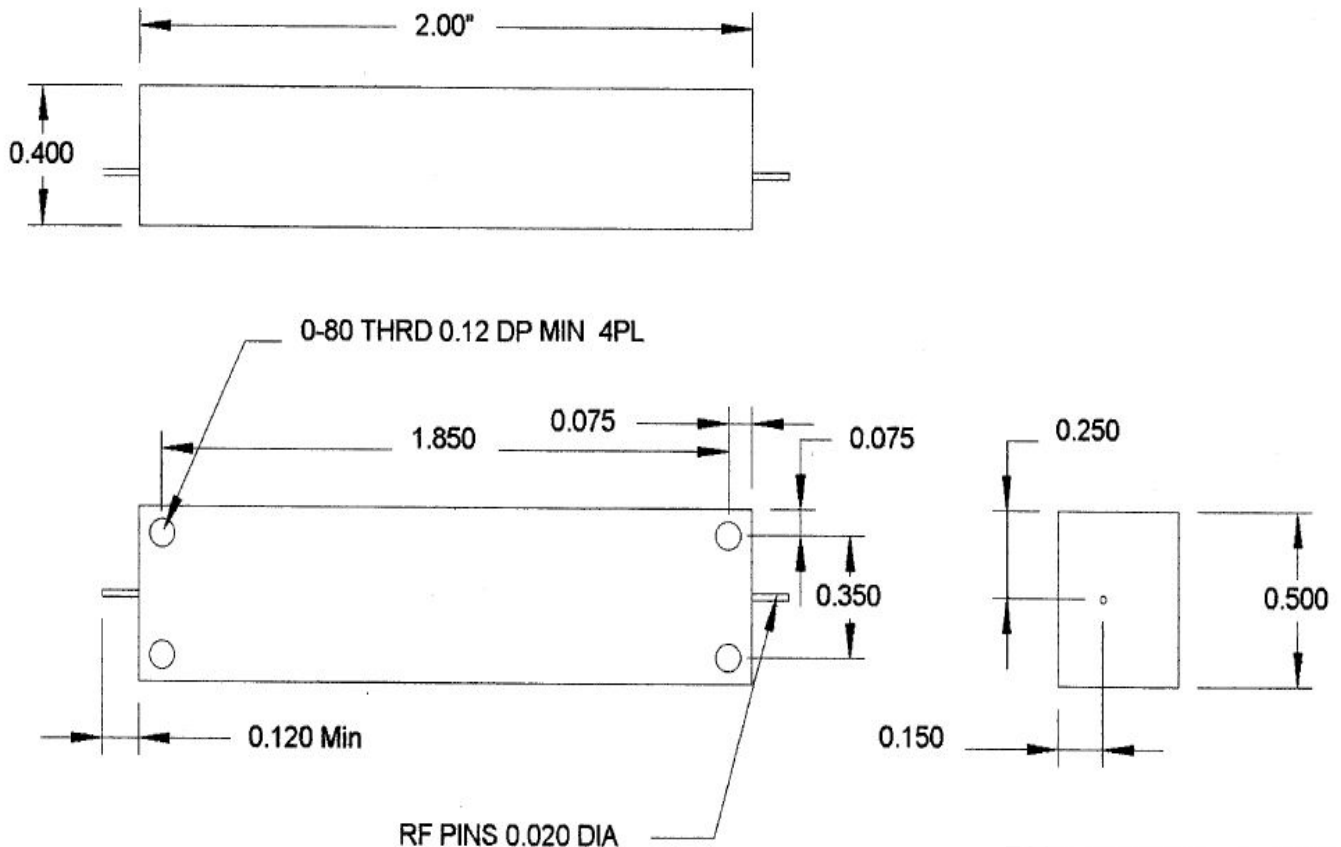
Mechanical

Mounting Method: Threaded Mounting Holes
Connector Type: Surface-Mount
Dimensions: 2.0" x 0.5" x 0.4" in.

Environmental

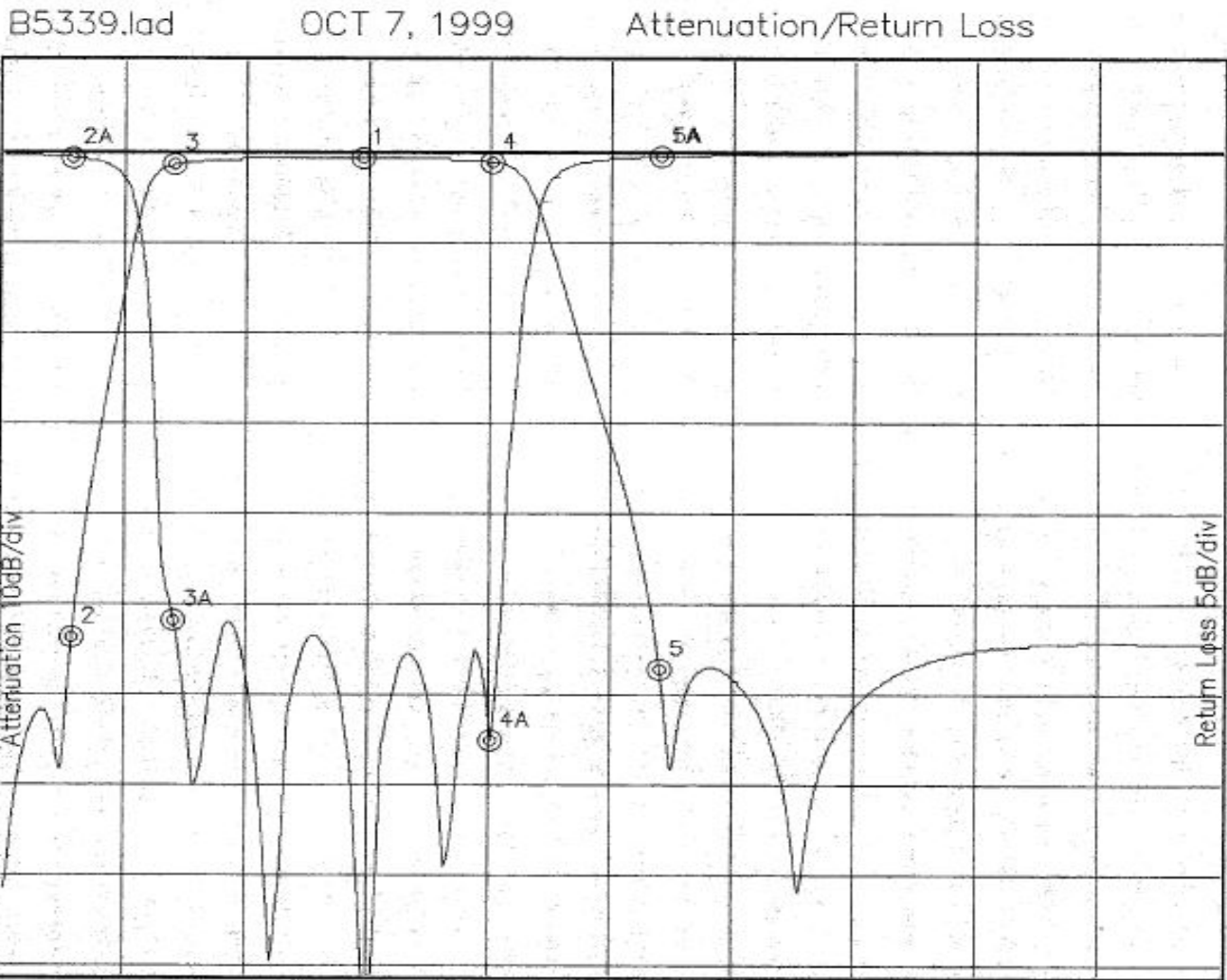
Operating Temperature: -25°C to $+70^{\circ}\text{C}$
Storage Temperature: -40°C to $+90^{\circ}\text{C}$
Shock: 10 G. 11ms
Vibration: 10 G. 5 to 200Hz

Outline Drawing:





Response Plot:



Attenuation Start: 30.0MHz Stop: 160.0MHz

Return Loss Start: 30.0MHz Stop: 160.0MHz

Marker 1 Freq 68.223MHz Atten -0.608dB
 Marker 2 Freq 37.141MHz Atten -53.461dB
 Marker 3 Freq 48.061MHz Atten -1.381dB
 Marker 4 Freq 82.084MHz Atten -1.057dB
 Marker 5 Freq 100.14MHz Atten -57.050dB

Marker 1A Freq 100.14MHz Ret Loss -0.228dB
 Marker 2A Freq 37.141MHz Ret Loss -0.277dB
 Marker 3A Freq 48.061MHz Ret Loss -25.808dB
 Marker 4A Freq 82.084MHz Ret Loss -32.391dB
 Marker 5A Freq 100.14MHz Ret Loss -0.228dB