

Feed-through terminal, Screw connection, Mounting type: Mounting rail TS 35/7.5, Rated cross-section: 50 mm², Width: 18.5 mm, Colour: Beige

### Business data

|  |                       |
|--|-----------------------|
| Article number                             | <u>17156.2</u>        |
| Article name                               | SRK 50/2A BG          |
| GTIN (EAN)                                 | 4044211186715         |
| Packaging unit                             | 10                    |
| Quantity unit                              | PC                    |
| Weight per piece (not including packaging) | 101 g                 |
| Weight per piece (including packaging)     | 111 g                 |
| Unit of weight                             | G                     |
| Customs number                             | 85369010              |
| Country of origin                          | CZ                    |
| Prio-Article                               | 17156.2               |
| Product description                        | Feed-through terminal |

---

### Technical data

---

#### Dimensions

|                  |         |
|------------------|---------|
| Length           | 72.5 mm |
| Width            | 18.5 mm |
| Height TS 35/7.5 | 74 mm   |

#### Ratings

|   |                    |
|---|--------------------|
| Rated voltage                                   | 1000 V             |
| Rated current                                   | 150 A              |
| Current load, max.                              | 192 A              |
| Rated cross-section                             | 50 mm <sup>2</sup> |
| Rated impulse voltage                           | 8 kV               |
| Overvoltage category                            | III                |
| Contamination degree                            | 3                  |
| Maximum power dissipation for nominal condition | 4.8 W              |

### Technical data

#### Connection data

|  |                    |
|--|--------------------|
| Connection principle   | Screw connection   |
| Connection position  | Lateral            |
| Connections  | 2                  |
| Number of terminals per level                                | 2                  |
| Number of levels   | 1                  |
| Wire cross-section single-core (rigid) / stranded, min.      | 10 mm <sup>2</sup> |
| Wire cross-section single core (rigid)/stranded, max.        | 70 mm <sup>2</sup> |
| Wire cross-section stranded, min.                            | 10 mm <sup>2</sup> |
| Wire cross-section stranded, max.                            | 50 mm <sup>2</sup> |
| Wire cross-section stranded with wire-end ferrules,min.      | 10 mm <sup>2</sup> |
| Wire cross-section stranded with wire-end ferrules,max.      | 50 mm <sup>2</sup> |
| Wire cross-section AWG, min.                                 | 8                  |
| Stripping length   | 24 mm              |
| Screw head   | Inner hex (Allen)  |
| Screw threading  | M 6                |
| Tightening torque, min.                                      | 3.5 Nm             |
| Tightening torque, max.                                      | 6 Nm               |
| Wire cross-section single-core (rigid) / stranded, AWGmin.   | 8                  |
| Wire cross-section stranded, AWG min.                        | 8                  |
| Wire cross-section stranded with wire-end ferrules,AWG max.  | 1                  |
| Wire cross-section stranded with wire-end ferrules, AWG min. | 8                  |

#### Materials

|                           |               |
|---------------------------|---------------|
| Insulation housing        | Polyamide 6.6 |
| Flammability class UL 94  | V-0           |
| Working temperature, min. | -40 °C        |
| Working temperature, max. | 120 °C        |

#### Further technical data

|                                     |                         |
|-------------------------------------|-------------------------|
| Mounting type                       | Mounting rail TS 35/7,5 |
| Gauge plug acc. to EN 60 947-1      | B10                     |
| Number of cross-connection channels | 1                       |
| Number of test pick-off options     | 1                       |

---

### Technical data

---

#### Environmental Product Compliance

---

|                                |            |
|--------------------------------|------------|
| REACH Conform                  | yes        |
| REACH Reference date           | 2022-06-10 |
| REACH Candidate Substance Note | No         |
| RoHS Conform                   | yes        |

---

### Approvals

#### Standards and regulations

|              |                |
|--------------|----------------|
| EAC approval | TR ZU 004/2011 |
|--------------|----------------|

|                      |     |
|----------------------|-----|
| EAC approval granted | yes |
|----------------------|-----|

#### cUL Recognized

|              |              |
|--------------|--------------|
| cUL approval | C22.2 No 158 |
|--------------|--------------|

|                               |       |
|-------------------------------|-------|
| cUL Usegroup B: rated voltage | 600 V |
|-------------------------------|-------|

|                               |       |
|-------------------------------|-------|
| cUL Usegroup B: rated current | 150 A |
|-------------------------------|-------|

|                               |       |
|-------------------------------|-------|
| cUL Usegroup C: rated voltage | 600 V |
|-------------------------------|-------|

|                               |       |
|-------------------------------|-------|
| cUL Usegroup D: rated voltage | 600 V |
|-------------------------------|-------|

|                               |       |
|-------------------------------|-------|
| cUL Usegroup D: rated current | 150 A |
|-------------------------------|-------|

|                               |        |
|-------------------------------|--------|
| cUL Usegroup E: rated voltage | 1000 V |
|-------------------------------|--------|

|                               |       |
|-------------------------------|-------|
| cUL Usegroup E: rated current | 150 A |
|-------------------------------|-------|

|  |    |
|--|----|
| cUL wire cross-section single-core (rigid) AWG, min. | 10 |
|--|----|

|  |     |
|--|-----|
| cUL wire cross-section single-core (rigid) AWG, max. | 1/0 |
|--|-----|

|   |   |
|---|---|
| cUL wire cross-section stranded AWG, min. | 8 |
|---|---|

|   |     |
|---|-----|
| cUL wire cross-section stranded AWG, max. | 1/0 |
|---|-----|

|                  |        |
|------------------|--------|
| cUL torque, min. | 3.5 Nm |
|------------------|--------|

|                  |      |
|------------------|------|
| cUL torque, max. | 6 Nm |
|------------------|------|

|                   |    |
|-------------------|----|
| cUL wire material | Cu |
|-------------------|----|

|                |   |
|----------------|---|
| cUL Recognized | 1 |
|----------------|---|

#### KEMA KEUR approval

|                    |                   |
|--------------------|-------------------|
| KEMA KEUR approval | EN 60947-7-1:2009 |
|--------------------|-------------------|

|                            |     |
|----------------------------|-----|
| KEMA KEUR approval granted | yes |
|----------------------------|-----|

|                    |        |
|--------------------|--------|
| KEMA rated voltage | 1000 V |
|--------------------|--------|

|                    |       |
|--------------------|-------|
| KEMA rated current | 150 A |
|--------------------|-------|

|                            |      |
|----------------------------|------|
| KEMA rated impulse voltage | 8 kV |
|----------------------------|------|

|   |                    |
|---|--------------------|
| KEMA wire cross-section single core (rigid), min. | 10 mm <sup>2</sup> |
|---|--------------------|

|   |                    |
|---|--------------------|
| KEMA wire cross-section single-core (rigid), max. | 70 mm <sup>2</sup> |
|---|--------------------|

|  |                    |
|--|--------------------|
| KEMA wire cross-section stranded, min. | 10 mm <sup>2</sup> |
|--|--------------------|

|  |                    |
|--|--------------------|
| KEMA wire cross-section stranded, max. | 70 mm <sup>2</sup> |
|--|--------------------|

|                   |        |
|-------------------|--------|
| KEMA torque, min. | 3.5 Nm |
|-------------------|--------|

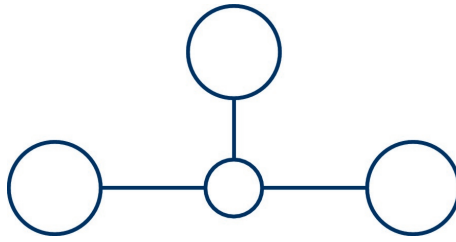
|                   |      |
|-------------------|------|
| KEMA torque, max. | 6 Nm |
|-------------------|------|

### Approvals

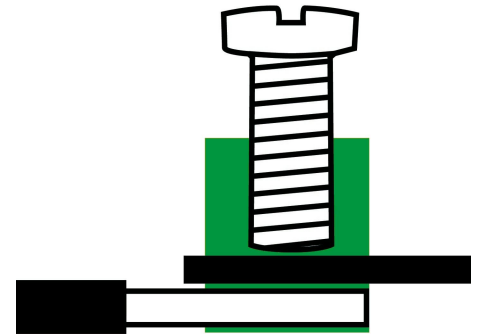
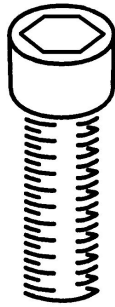
#### UL Recognized

|   |             |
|---|-------------|
| UL approval   | UL 1059     |
| UL Usegroup B: rated voltage                        | 600 V       |
| UL Usegroup B: rated current                        | 150 A       |
| UL Usegroup C: rated voltage                        | 600 V       |
| UL Usegroup C: rated current                        | 150 A       |
| UL Usegroup D: rated voltage                        | 600 V       |
| UL Usegroup D: rated current                        | 150 A       |
| UL Usegroup E: rated voltage                        | 1000 V      |
| UL Usegroup E: rated current                        | 150 A       |
| UL wire cross-section single-core (rigid) AWG, min. | 10          |
| UL wire cross-section single-core (rigid) AWG, max. | 1/0         |
| UL wire cross-section stranded AWG, min.            | 10          |
| UL wire cross-section stranded AWG, max.            | 1/0         |
| UL torque, min.                                     | 30.9 Lb In. |
| UL torque, max.                                     | 53.1 Lb In. |
| UL wire material                                    | Cu          |
| UL factory wiring                                   | 1           |
| UL field wiring                                     | 1           |
| UL Recognized                                       | 1           |

### Media



**M6**



### Accessories

#### Cover

Cover, Length: 51.5 mm, Width: 18 mm, Colour: White



| Article number | Article name  | GTIN (EAN)    | Packaging unit |
|----------------|---------------|---------------|----------------|
| <u>17284.7</u> | SAD 1/18/B WH | 4044211205539 | 10 ST          |

Cover, Length: 51.5 mm, Width: 18 mm, Colour: Yellow



| Article number | Article name  | GTIN (EAN)    | Packaging unit |
|----------------|---------------|---------------|----------------|
| <u>17283.8</u> | SAD 1/18/B YE | 4044211205522 | 10 ST          |

#### Measurement pick-off terminal

Measurement pick-off terminal, Screw connection, Mounting type: On base, Rated cross-section: 10 mm<sup>2</sup>, Width: 10 mm, Colour: Beige



| Article number | Article name | GTIN (EAN)    | Packaging unit |
|----------------|--------------|---------------|----------------|
| <u>1121.2</u>  | MAG 50 BG    | 4044211080914 | 10 ST          |

#### Inlay profile

Inlay plate, Colour: natural



| Article number | Article name | GTIN (EAN)    | Packaging unit |
|----------------|--------------|---------------|----------------|
| <u>2274.0</u>  | EP 50        | 4044211050818 | 10 ST          |

#### Allen key socket wrench

Inner hex key with bare blade



| Article number | Article name | GTIN (EAN)    | Packaging unit |
|----------------|--------------|---------------|----------------|
| <u>2818.0</u>  | ISKS 5       | 4044211055448 | 1 ST           |

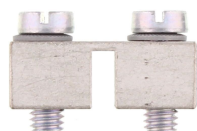
#### Cross-connector





Cross-connector, No. of poles: 4, Mounting type: Can be screwed on, Width: 67.8 mm, Rated cross-section: 50 mm<sup>2</sup>, Colour: natural

| Article number | Article name | GTIN (EAN)    | Packaging unit |
|----------------|--------------|---------------|----------------|
| <u>17257.0</u> | SQ 50/4      | 4044211186838 | 10 ST          |



Cross-connector, No. of poles: 2, Mounting type: Can be screwed on, Width: 30.6 mm, Rated cross-section: 50 mm<sup>2</sup>, Colour: natural

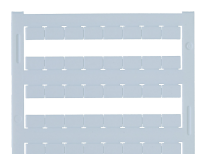
| Article number | Article name | GTIN (EAN)    | Packaging unit |
|----------------|--------------|---------------|----------------|
| <u>17255.0</u> | SQ 50/2      | 4044211186814 | 10 ST          |



Cross-connector, No. of poles: 3, Mounting type: Can be screwed on, Width: 49.2 mm, Rated cross-section: 50 mm<sup>2</sup>, Colour: natural

| Article number | Article name | GTIN (EAN)    | Packaging unit |
|----------------|--------------|---------------|----------------|
| <u>17256.0</u> | SQ 50/3      | 4044211186821 | 10 ST          |

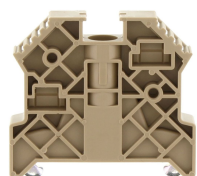
### Quick marking



Terminal marker / Pocket Maxicard, Length: 5 mm, Width: 8 mm, Colour: White

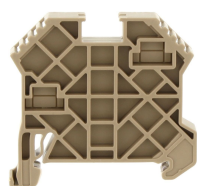
| Article number | Article name   | GTIN (EAN)    | Packaging unit |
|----------------|----------------|---------------|----------------|
| <u>9323.7</u>  | PMC SB 8/40 WH | 4044211129231 | 400 ST         |

### End stop



End stop, Mounting type: Mounting rail TS 35/7.5, Width: 9.5 mm, Colour: Beige

| Article number | Article name  | GTIN (EAN)    | Packaging unit |
|----------------|---------------|---------------|----------------|
| <u>2828.0</u>  | ES 35/K/ST BG | 4044211055547 | 50             |



End stop, Mounting type: Mounting rail TS 35/7.5 and TS 35/15, Width: 8 mm, Colour: Beige

| Article number | Article name | GTIN (EAN)    | Packaging unit |
|----------------|--------------|---------------|----------------|
| <u>17250.2</u> | SES 35 BG    | 4044211178253 | 50             |