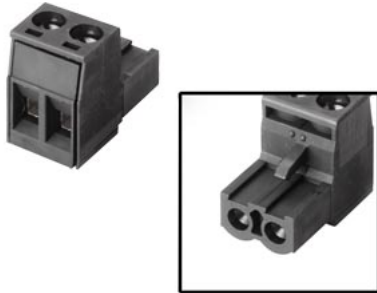


Female connector, 2-pin, type 2 2-pin connector, female Grid size 5.08 mm
Further information, Quantity and content: see technical data



General information	
Product type designation	Power supply unit connector
Control elements	
Frame size/design	
<ul style="list-style-type: none"> Standard 	Yes; L shape
Installation type/mounting	
Wall mounting/direct mounting	Yes; can be plugged into SIMATIC HMI device
Supply voltage	
Rated value (DC)	24 V; DC
Interfaces	
HMI-side interface	
<ul style="list-style-type: none"> Number of pins HMI-side 	2; Male
Device-side interface	
<ul style="list-style-type: none"> Number of pins device-side 	2; Female, screw terminals
Standards, approvals, certificates	
Use in hazardous areas	
<ul style="list-style-type: none"> ATEX Zone 2 ATEX Zone 22 IECEx Zone 2 IECEx Zone 22 cULus Class I Zone 1 cULus Class I Zone 2, Division 2 FM Class I Division 2 	Yes; Device-dependent, see operating instructions Yes; Device-dependent, see operating instructions Yes; Device-dependent, see operating instructions Yes; Device-dependent, see operating instructions Yes; Device-dependent, see operating instructions Yes; Device-dependent, see operating instructions Yes; Device-dependent, see operating instructions
Ambient conditions	
Ambient temperature during operation	
<ul style="list-style-type: none"> min. max. 	0 °C 55 °C
Ambient temperature during storage/transportation	
<ul style="list-style-type: none"> min. max. 	-20 °C 70 °C
Relative humidity	
<ul style="list-style-type: none"> Operation, max. 	95 %
Mechanics/material	
Material	
<ul style="list-style-type: none"> Plastic 	Yes; Black
Enclosure material (front)	
<ul style="list-style-type: none"> Plastic 	Yes; Contact spacing 5.08 mm
Screw type	

- 4.5 V

Yes; Screw terminals

Dimensions

Width	11 mm
Height	18.5 mm
Thickness	15 mm

Scope of supply

Delivery quantity in pieces	5
-----------------------------	---

Other

Merchandise	Yes
Manufacturer name	SIEMENS AG
Manufacturer's address	Gleiwitzerstraße 555, 90475 Nuremberg, Germany
Target devices	for Comfort Panel, IPC, Flat Panel, Thin Client

Usable in the following products

• Product 1	6AV2124-2DC01-0AX0
• Product 2	6AV2124-1*
• Product 3	6av2124-0*
• Product 4	6AV2123-2*
• Product 5	6AV6545-4*
• Product 6	6AV6545-8*
• Product 7	6AV6647-0*

last modified:

3/12/2021 