

1

2

3

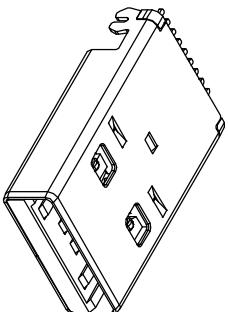
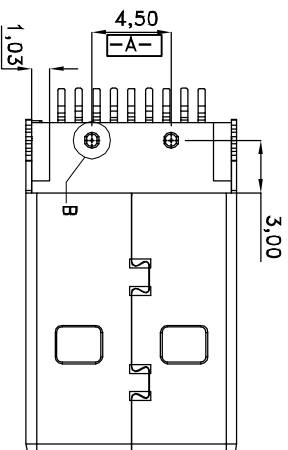
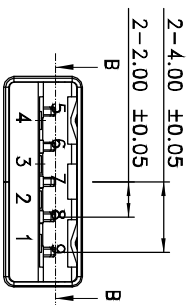
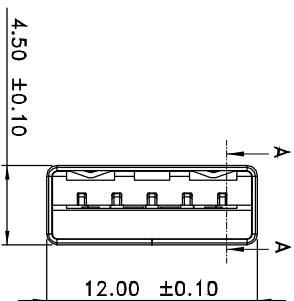
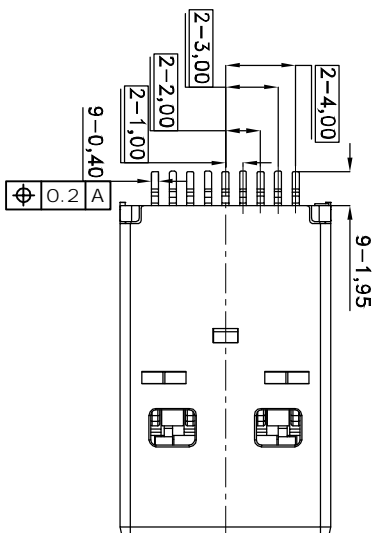
4

5

6

7

# ① USB3.0 COMPLIANT



## NOTES:

- Material: Insulator: Thermoplastic Blue(Pantone 300C) UL94HB  
 Contact: Copper Alloy  
 Shell: Steel  
 ☉ Shell plating: Nickel plated

## Contact Plating:

- Contact Area: 30u" Pd-Ni+2u" Gold  
 Solder tails Area: 100u"~200u" Matte Tin  
 Under plate: 80u" Nickel

## ELECTRICAL:

- Current Rating: 1.8Amps max. shall be applied to Vbus pin and its corresponding GND pin.  
 0.25Amp min. shall be applied to all the other contacts.

## Contact Resistance:

- 30mΩ max. initial for VBUS and GND contacts  
 50mΩ max. initial for All other contacts  
 Insulation Resistance:100 MΩ min. @ 250VDC  
 Dielectric withstanding voltage: 100V AC / MINUTE  
 Temperature range: -20°C TO +85°C  
 Mating cycles: 5000 insertions

## PACKIING: Tray

## RoHS compliant

Unit: mm

Scale	Free
TOLERANCE	
X.	±0.50
X.X	±0.30
X.XX	±0.20
DIM	TOL
Angle	±5°
Angle	TOL

①	Id.	Modification	Date	Name
①	Drawn		10.06.2010	Alex
②		Update to new part and Change Shell plating	04.07.2016	Amy
③		Correction WSW P/N	21.12.2016	S.Bölling
④		Add the "USB3.0 COMPLIANT"	08.04.2014	Winnie

Date	Name
10.06.2010	Alex
04.07.2016	Amy

Customer-No.	ASSMANN WSW-No.	Drawing-No.	Replace
	③A-USB3 A-LP-SMT	ASS 4221 CO	rev03
			SHEET 1 / 2

1

2

3

4

5

6

7

SV1945

1

2

3

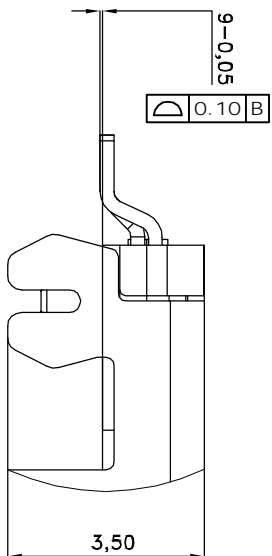
4

5

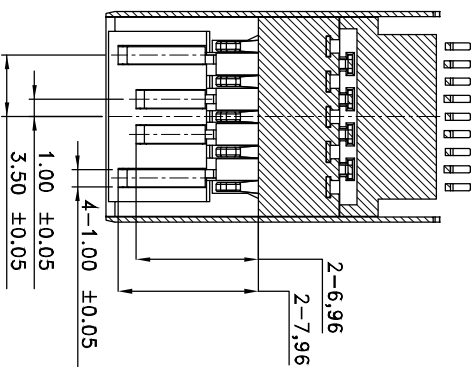
6

7

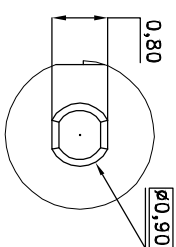
① USB3.0 COMPLIANT



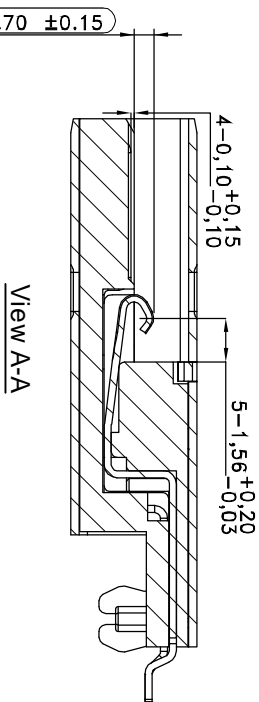
Detail A



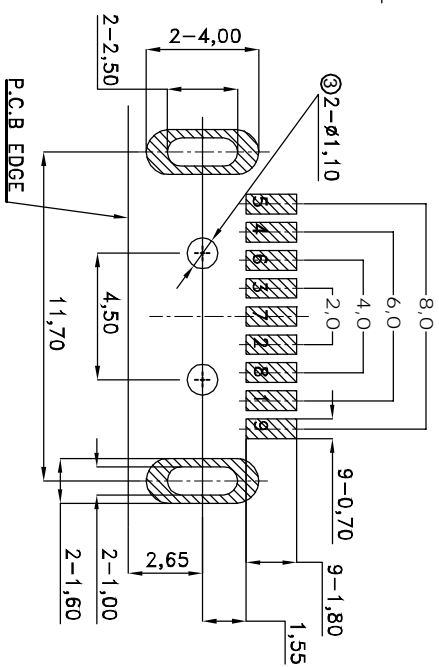
View B-B



Detail B



View A-A



Recommended PCB Layout  
Tolerance: ±0.05mm

RoHS compliant  
Unit: mm

Scale	Free				
TOLERANCE					
X.	±0.50				
X.X	±0.30	③	Correction WSW P/N	21.12.2016	S.Bölling
X.XX	±0.20	②	Update to new part and Change Shell plating	04.07.2016	Amy
DIM	TOL	①	Add the "USB3.0 COMPLIANT"	08.04.2014	Winnie
Angle	±5°	①	Drawn	10.06.2010	Alex
Angle	TOL		Modification		

Customer-No.	Name	Date	Name
	Drawn	10.06.2010	Alex
	Approved	04.07.2016	Amy

ASSMANN WSW-No.	ASSMANN WSW-No.
③ A-USB3 A-LP-SMT	

Drawing-No.	Replace
ASS 4221 CO	rev03

SHEET
2 / 2

1

2

3

4

5

6

7



SV1945