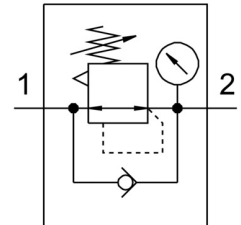


Pressure regulator MS4-LR-1/4-D6-AS

Part number: 529417

FESTO



Data sheet

Feature	Value
Size	4
Series	MS
Actuator lock	Rotary knob with detent can be closed with accessories
Mounting position	Any
Structural design	Directly controlled diaphragm regulator
Controller function	Outlet pressure constant With secondary exhausting With return flow function
Symbol	00991558
Pressure gauge	with pressure gauge
Operating pressure	0.8 bar ... 14 bar
Pressure regulation range	0.3 bar ... 7 bar
Max. pressure hysteresis	0.25 bar
Standard nominal flow rate	1800 l/min
Operating medium	Compressed air as per ISO 8573-1:2010 [7:4:4] Inert gas
Information on operating and pilot media	Operation with oil lubrication possible (required for further use)
Corrosion resistance class (CRC)	2 - Moderate corrosion stress
LABS (PWIS) conformity	VDMA24364-B1/B2-L
Storage temperature	-10 °C ... 60 °C
For use in the food industry	See supplementary material information
Temperature of medium	-10 °C ... 60 °C
Ambient temperature	-10 °C ... 60 °C
Product weight	225 g
Type of mounting	Optionally: Front panel mounting Line installation With accessories
Pneumatic connection 1	G1/4
Pneumatic connection 2	G¼
Note on materials	RoHS-compliant
Material of sub-base	Die-cast aluminum
Material of operator panel	PA POM
Seals material	NBR

Feature	Value
Housing material	Die-cast aluminum
Diaphragm material	NBR