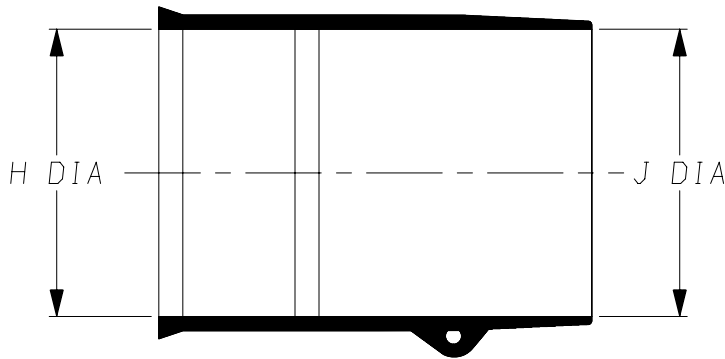
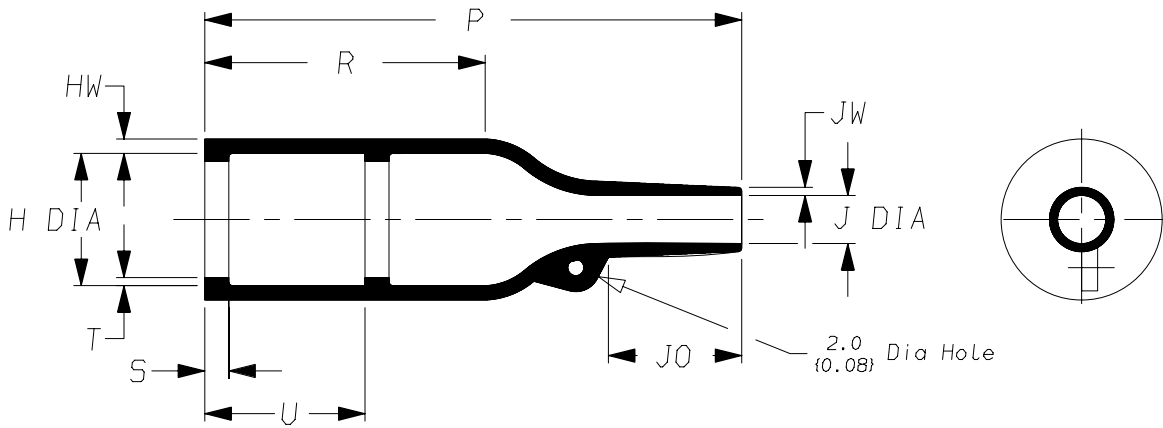


a) Part as supplied

202K142-*G04



b) Part after unrestricted recovery.



DIMENSIONS in millimetres
(in inches, for reference)

| Part No. | H | | J | | P | R | S | T | U | JO | HW | JW |
|--------------|--------------|--------------|--------------|---------------|--------------|--------------|---------------|---------------|--------------|--------------|---------------|---------------|
| | Min | Max | Min | Max | ±10% | ±10% | ±10% | ±10% | ±10% | ±10% | ±20% | ±20% |
| | a | b | a | b | b | b | b | b | b | b | b | b |
| 202K142-*G04 | 38 (1.50) | 18 (0.71) | 38 (1.50) | 7.1 (0.28) | 67 (2.64) | 35 (1.38) | 3.0 (0.12) | 1.0 (0.04) | 20 (0.79) | 17 (0.67) | 1.8 (0.07) | 1.0 (0.04) |
| | # | | # | | | | | | | | | |

This is an overexpanded variant
Modified dimensions are shown thus:- #

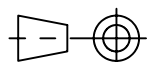
Copyright (!)

The copyright in this drawing is the property of Tyco Electronics UK Ltd. The drawing is issued on the condition that it is not copied, reproduced or disclosed to a third party, either in whole or in part without the prior written consent of Tyco Electronics UK Ltd.

Drawn A.LILLEY. Checked Issue 2 Date June 2007

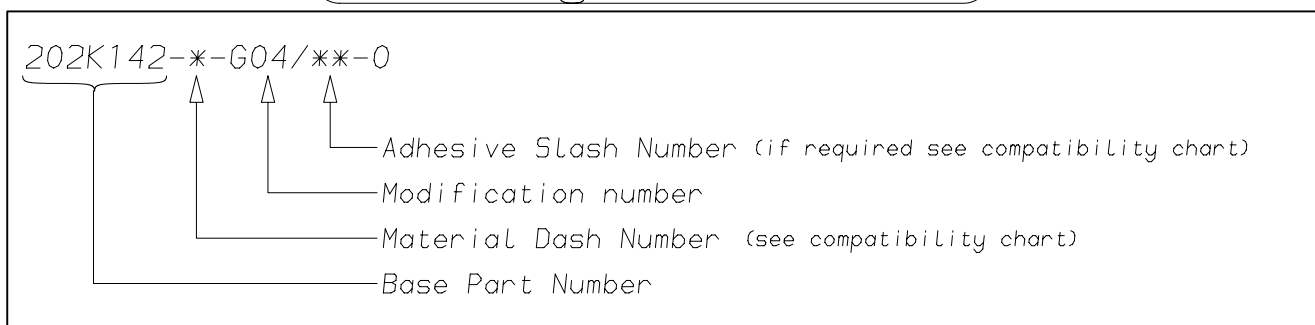
Conforms to ISO Recommendations
3rd Angle Projection
Not to Scale

Approval Design MKTG. Q.A.



| | | | |
|----------------|-----------|--|-------------------------------------|
| Raychem | | Specification Control Drawing | Part Number 202K142-*G04 Issue 2 |
| Iss. | Date | E.C.R. No. | Details of Change |
| 2 | June 2007 | CR06-HM-012 | Imperial dimensions added |

(Ordering Information)



(COMPATIBILITY CHART)

| Material Dash Number | Material Description | SPEC Number | Coating Slash Number |
|----------------------|---------------------------------|-----------------|----------------------|
| -3 | POLYOLEFIN, SEMI-RIGID | RT-301, RK-6703 | /42, /86, /180 |
| -4 | POLYOLEFIN, FLEXIBLE | RT-1304 RT-1050 | /42, /86, /180 |
| -25 | ELASTOMER, FLUID RESISTANT | RW-2070 | /42, /86, /225 |
| -130 | POLYOLEFIN, COMMERCIAL FLEXIBLE | RW-2008 | /42 |
| | | | |
| | | | |

NOTES

- ① As supplied dimensions are for uncoated parts, when coating is added entry diameters will reduce by 1.5mm Max.
- ② On some parts a bump or depression at the material injection point may exist as a normal manufacturing process.

| | |
|--|---|
| Tyco Electronics UK Ltd. Faraday Road, Swindon, Wiltshire, SN3 5HH England Telephone: (01793) 528171 Fax: 572516 | Tyco Electronics Corporation 300, Constitution Drive, Menlo Park, CA 94025 USA Telephone (650) 361-3860 Fax: (650) 361-5579 |
| Cage Code K1010 | Cage Code 06090 |