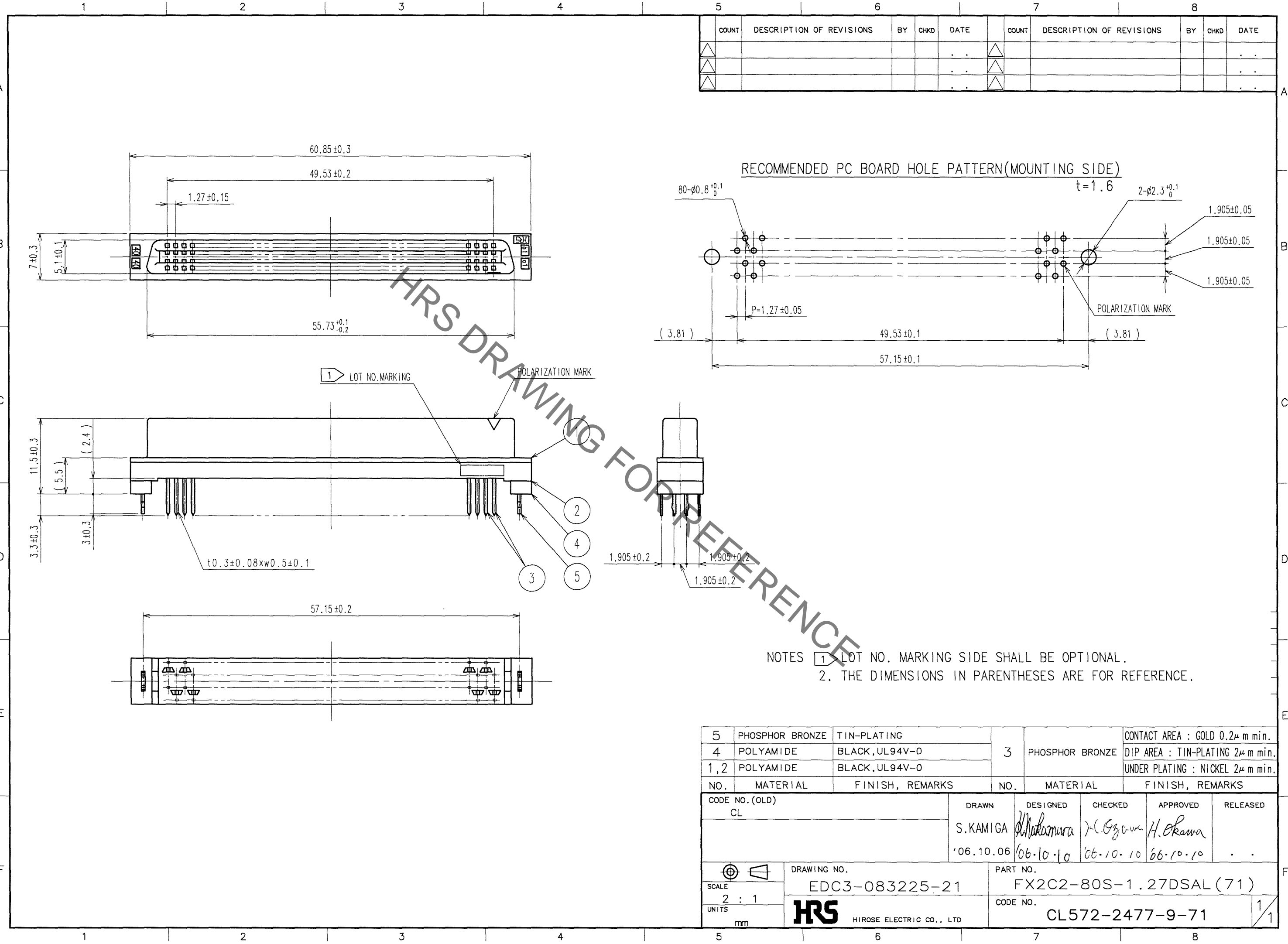


May.1.2023 Copyright 2023 HIROSE ELECTRIC CO., LTD. All Rights Reserved.
In case of consideration for using Automotive equipment / device which demand high reliability, kindly contact our sales window correspondents.



COUNT	DESCRIPTION OF REVISIONS	BY	CHKD	DATE	COUNT	DESCRIPTION OF REVISIONS	BY	CHKD	DATE
△					△				
△					△				
△					△				

HRS DRAWING FOR REFERENCE

NOTES 1. LOT NO. MARKING SIDE SHALL BE OPTIONAL.
2. THE DIMENSIONS IN PARENTHESES ARE FOR REFERENCE.

5	PHOSPHOR BRONZE	TIN-PLATING								CONTACT AREA : GOLD 0.2μ m min.	
4	POLYAMIDE	BLACK, UL94V-0			3	PHOSPHOR BRONZE				DIP AREA : TIN-PLATING 2μ m min.	
1,2	POLYAMIDE	BLACK, UL94V-0								UNDER PLATING : NICKEL 2μ m min.	
NO.	MATERIAL	FINISH, REMARKS	NO.	MATERIAL	FINISH, REMARKS						
CODE NO. (OLD) CL			DRAWN	DESIGNED	CHECKED	APPROVED	RELEASED				
			S.KAMIGA	Makamura	(Gyowa)	H. Okawa					
			'06.10.06	'06.10.10	'06.10.10	'06.10.10					
DRAWING NO. EDC3-083225-21		PART NO. FX2C2-80S-1.27DSAL(71)									
SCALE 2 : 1		UNITS mm		DRAWING NO. EDC3-083225-21		PART NO. FX2C2-80S-1.27DSAL(71)		CODE NO. CL572-2477-9-71		1/1	

TO
PCK