

# S SW FS - S01 - A A 09 - HWH

SUNTSU

FOOT SWITCH

SWITCH FUNCTION  
A : SPST OFF-(ON)

TERMINAL CODE  
09 : PC Mounting

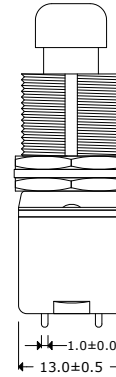
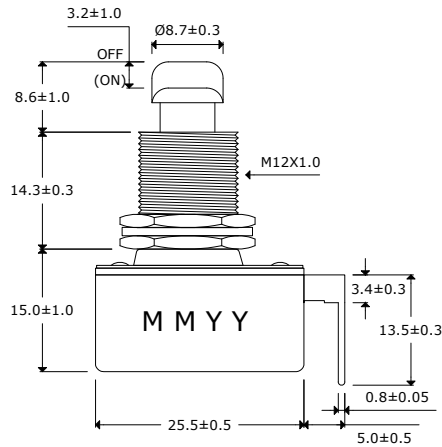
BUSHING AND BUTTON SPEC  
A : Button 8.7Ø, Bushing 14.3mm

ACCESSORIES  
H : Hex Nut  
W : Spring Washer

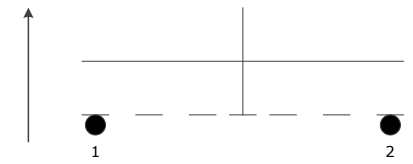


SWITCH

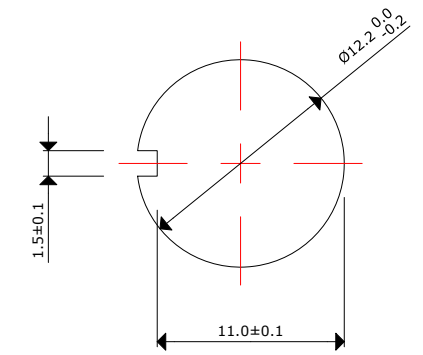
SERIES NUMBER



## Test Circuit



## Mounting Hole



### Soldering Ability:

Be soldered in 3 seconds

Be soldered in 360±20°C

### Electrical Parameters:

Rating: 6A 125V AC, 3A 250VAC

Contact Resistance: 50mΩ Max

Insulation Resistance: DC 500V 100MΩ Min.

Dielectric Strength: AC 1500V 1 minute

Operation Temperature: -20°C ~ 65°C

Switch Function: 2P SPST OFF-(ON), PUSH ON

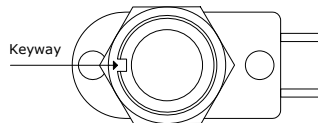
Accessories: 2 HEX Nut & 1 SPRING Washer Assembly

### Materials:

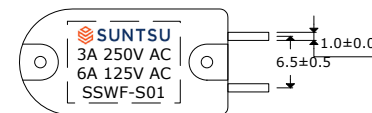
Frame: Black, PF

Actuator: Ni-plated, Brass

Terminals: Silver plated, Copper Alloy



Top View



Bottom View

### Remarks:

- 500pcs per master carton
- Electrical life 20,000 cycles
- Mechanical life 100,000 cycles



Momentary Foot Switch

Document History			
Edits Made	Date	Edited By	Approved By
Initial Release	09/07/2021	B. Gibbons	KH Mun

Part No.	SSWFS-S01-AA09-HWH	Drawn	B. Gibbons
Scale	Not drawn to scale	Tolerance	
Unit	mm	Pages	1/1