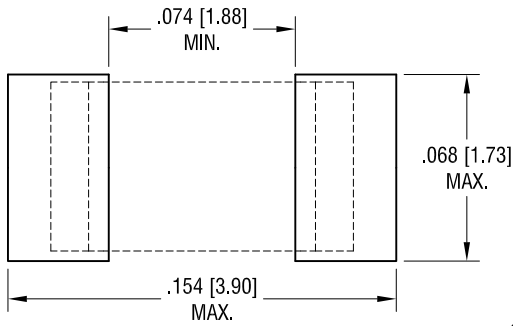
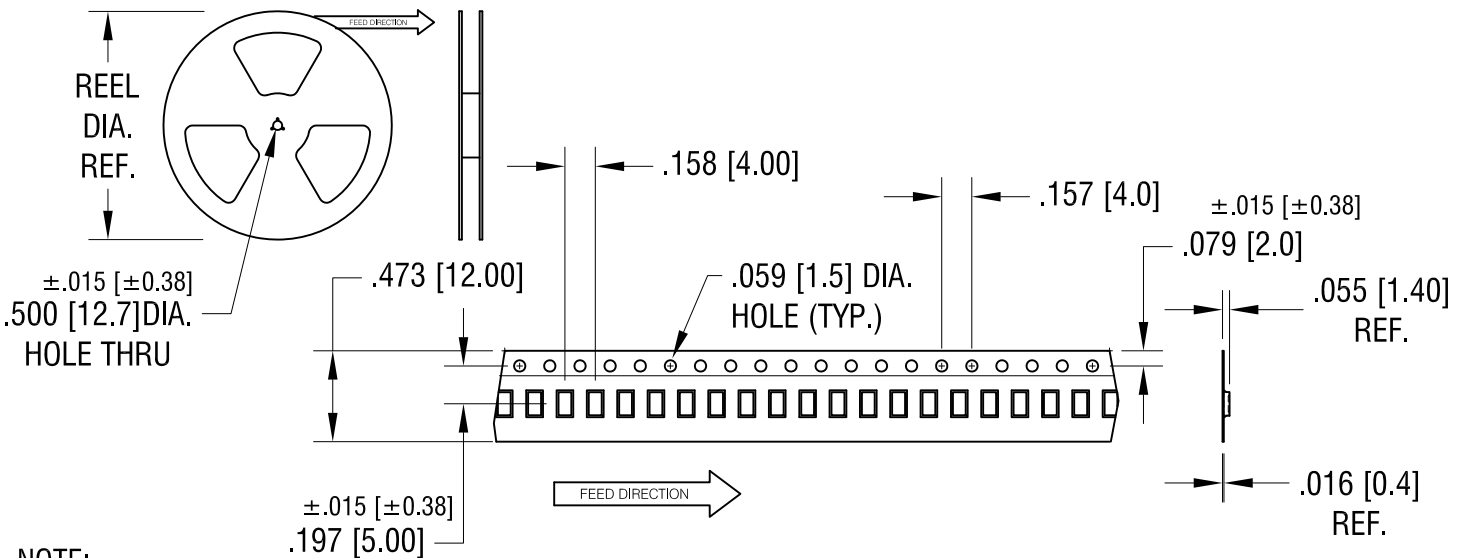
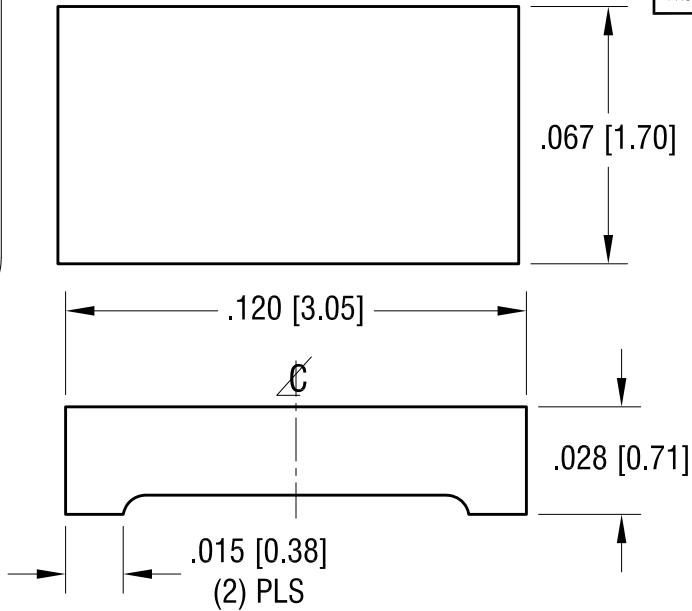


THIS DOCUMENT IS THE PROPERTY OF KEYSTONE ELECTRONICS CORP. AND SHALL NOT BE REPRODUCED, DISTRIBUTED OR USED AS A BASIS FOR MANUFACTURE WITHOUT PRIOR WRITTEN PERMISSION FROM KEYSTONE ELECTRONICS CORP.

PC BOARD PATTERN



ACTUAL SIZE



NOTE:

TAPE AND REEL SPECIFICATIONS:

1. TAPE:
MAT'L - ALL CONDUCTIVE POLYSTYRENE CARRIER
ANSI/EIA-481 STANDARD

2. REEL:
13.00 [330.0] DIA. , 5000 PIECES PER REEL

PART SPECIFICATIONS:

1. MAT'L- .028 [0.70] TH'K COPPER
FINISH: SILVER PLATE

REEL DIA. WAS 7.00 [178.00]
CHANGE AS PER ECN 20-045

5.13.20

A

DATE

DESCRIPTION

REV.

KEYSTONE ELECTRONICS CORP.

www.keyelco.com • NEW HYDE PARK, NY 11040 • Tel (516) 328-7500

PART NAME

1206 JUMPER ON TAPE AND REEL

MATERIAL

AS NOTED

FINISH

AS NOTED

DRN BY

NT

DATE

10.02.15

APP'D

SCALE

1X, 20X

TOLERANCES

INCH [MM]

DECIMAL

± .005 [± 0.13]

ANGULAR

± 1°

UNLESS OTHERWISE SPECIFIED

CODE

C

DWG NO.

5109