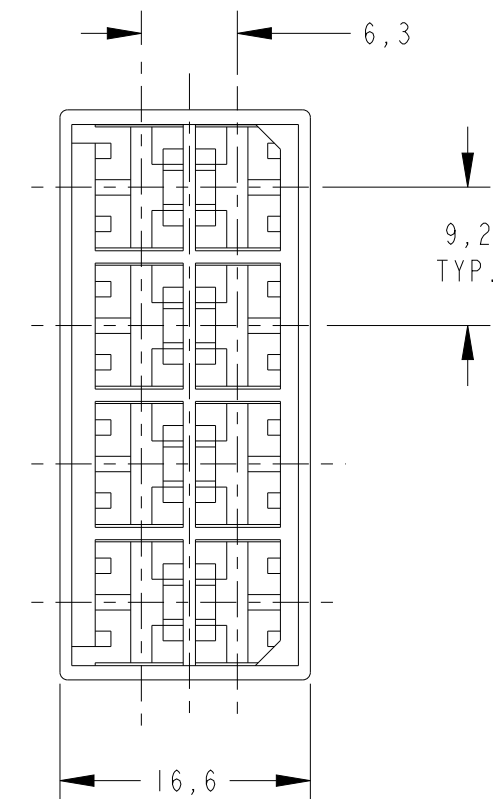
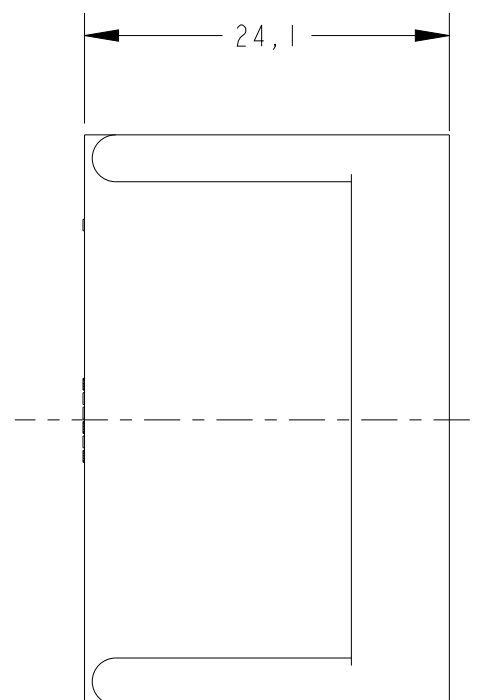
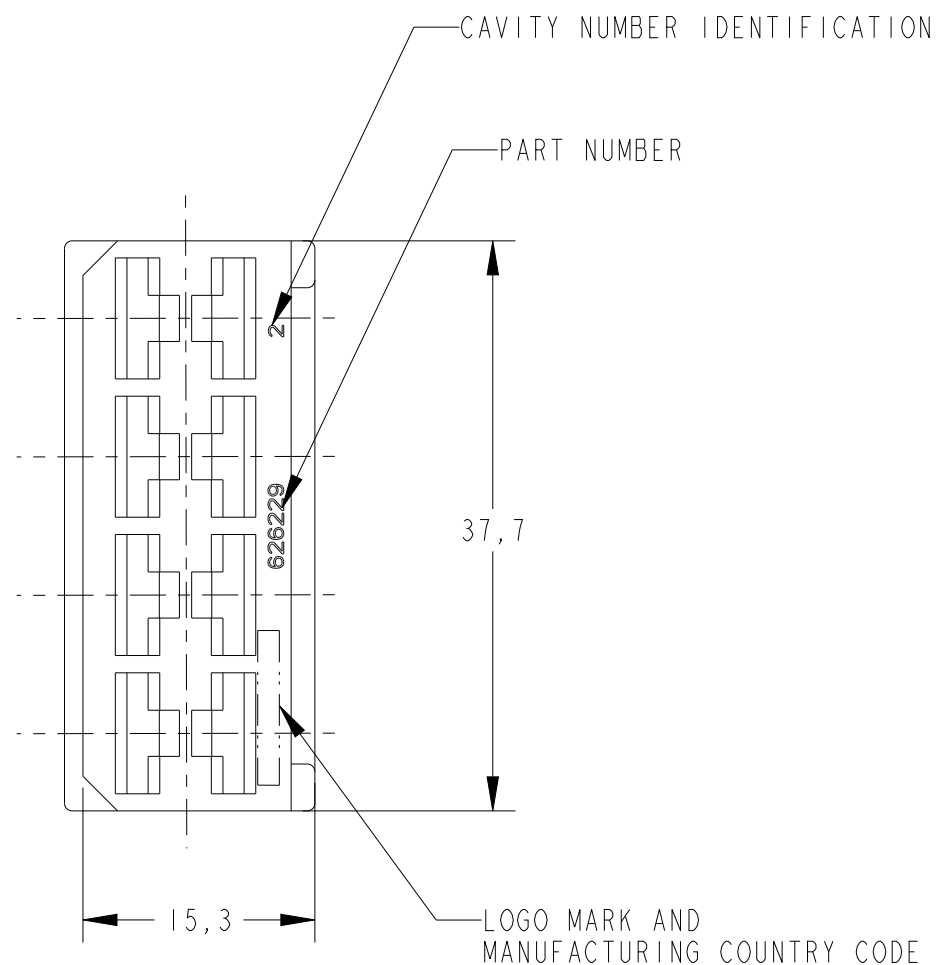
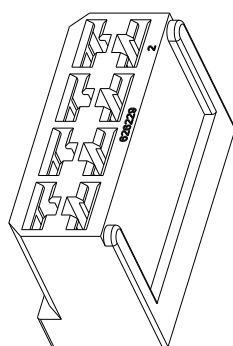


REVISIONS

| P | LTR | DESCRIPTION | DATE | DWN | APVD |
|----|-----|---------------------------|-----------|-----|------|
| B3 | | REV. BY ECO 16-006711 | 04MAY2016 | HC | WLS |
| B4 | | REVISED PER ECN-22-147227 | 04ABR2022 | WLS | BHC |
| | | | | | |
| | | | | | |



- 1- WALL THICKNESS 0,8mm.
- 2- INTERCHANGEABLE WITH PN 163007.



SCALE 1:1

| | | | |
|----------|---------|----------|-------------|
| OBSOLETE | ORANGE | PA 6.6 | 626229-9 |
| OBSOLETE | VIOLET | PA 6.6 | 626229-8 |
| OBSOLETE | GRAY | PA 6.6 | 626229-7 |
| OBSOLETE | BROWN | PA 6.6 | 626229-6 |
| OBSOLETE | BLACK | PA 6.6 | 626229-5 |
| OBSOLETE | YELLOW | PA 6.6 | 626229-4 |
| OBSOLETE | BLUE | PA 6.6 | 626229-3 |
| OBSOLETE | GREEN | PA 6.6 | 626229-2 |
| OBSOLETE | RED | PA 6.6 | 626229-1 |
| | NATURAL | PA 6.6 | 626229-0 |
| REMARK | FINISH | MATERIAL | PART NUMBER |

THIS DRAWING IS A CONTROLLED DOCUMENT.

DWN 04MAY2016 H.C.CANTER

CHK 05MAY2016 W.L.STEFANI

APVD -

PRODUCT SPEC -

APPLICATION SPEC -

WEIGHT -

CUSTOMER DRAWING



NAME HOUSING, 8 POSN. FAST-IN-ON RECEPT.

SIZE A3 CAGE CODE - DRAWING NO C-626229 RESTRICTED TO -

SCALE 2:1 SHEET 1 OF 1 REV B4

| DIMENSIONS: | TOLERANCES UNLESS OTHERWISE SPECIFIED: |
|-------------|--|
| mm | |
| | 0 PLC ±- |
| | 1 PLC ±0,2 |
| | 2 PLC ±- |
| | 3 PLC ±- |
| | 4 PLC ±- |
| | ANGLES ±1° |
| MATERIAL | FINISH |
| - | - |
| - | - |