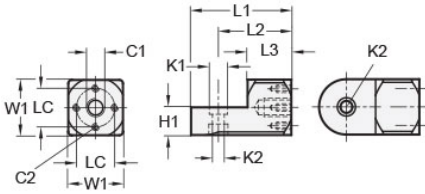




MT15:16-SWMB-M8-A

Ruland Swivel Mounting Block, Width/Height 25mm, Length 46mm, Aluminum



Description

Ruland MT15:16-SWMB-M8-A is a cross pattern swivel mounting block with an M8 tapped center hole, M4 threads in the cross, a 12.5mm base height, a 25mm width and height, a and 46mm overall length. It is designed to fit with Ruland modular mounting system swivel components that begin with MT15 or MT16. MT15:16-SWMB-M8-A is aluminum and screws are 304 stainless steel for use in most industrial applications. This swivel mounting block is used to support brackets for mounting sensors, screens, reflectors, plexiglass machine guards, and other industrial components. It has a cross pattern allowing the user to mount with a single M8 screw through the center of the bracket or with multiple M4 screws in the arms of the cross. The use of a cross pattern prevents the bracket from rotating if the mounted component has high mass or will have force applied to it such as a screen. An MT15:16-SWALK-M6-25 adjustable clamping handle can be used to rapidly reposition MT15:16-SWMB-M8-A without the use of tools. It is manufactured by Otto Ganter, inventoried by Ruland, and RoHS3 compliant.

Product Specifications

Center Thread C1	M8	Cross Thread C2	M4 x 4
Counterbore 1 Diameter K1	10 mm	Counterbore 2 Diameter K2	6.5 mm
Width & Height W1	25 mm	Base Height H1	12.5 mm
Center To Center LC	17 mm	Edge To Center Of Counterbore L2	33.5 mm
Overall Length L1	46 mm	Hub Length LH	20 mm
Material Specification	Aluminum	Manufacturer	JW Winco/ Otto Ganter
Country of Origin	Germany	Weight (lbs)	0.101400
UPC	634529230114	Tariff Code	7609.00.0000
UNSPC	31162908		