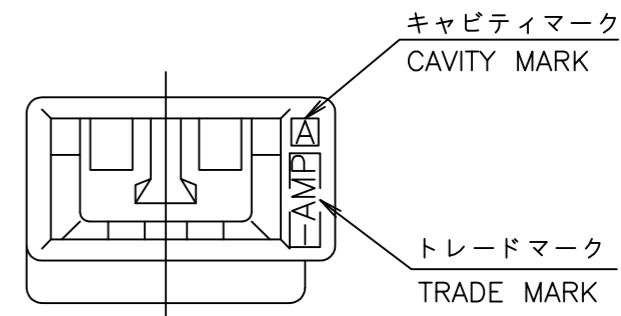
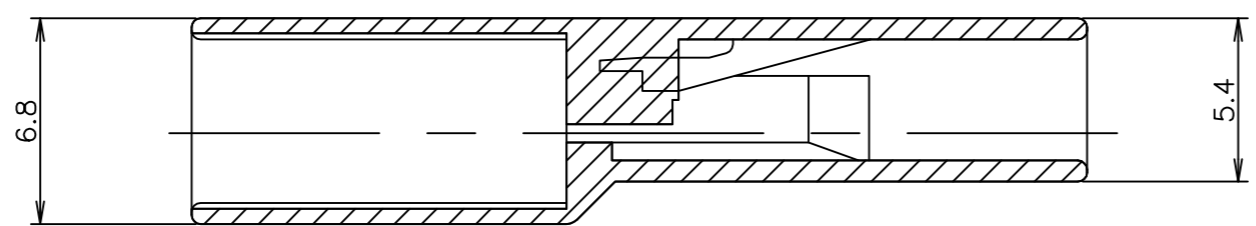
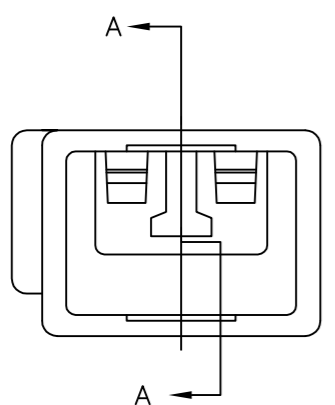
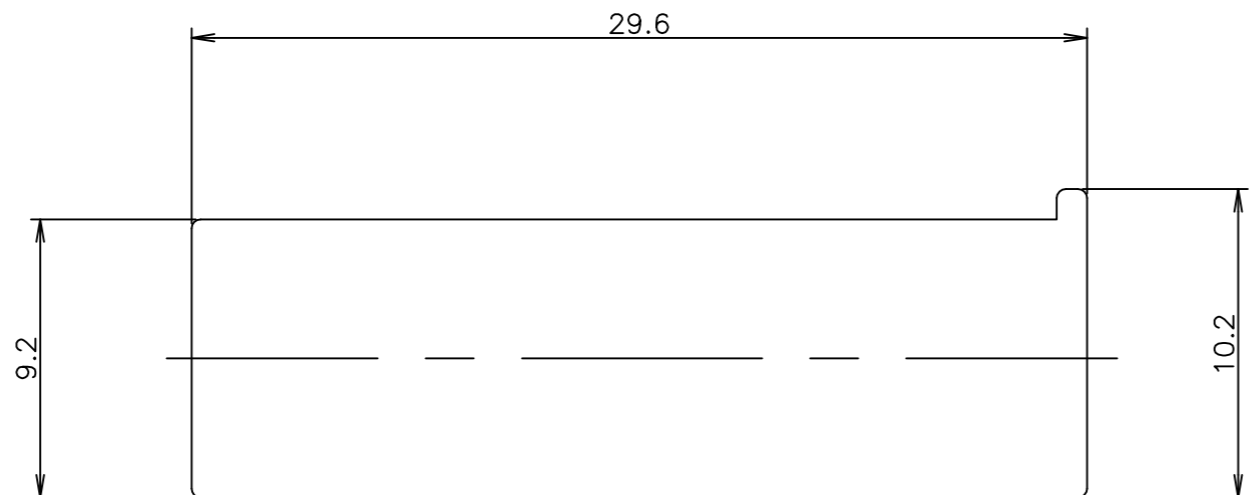


THIS DRAWING IS UNPUBLISHED. RELEASED FOR PUBLICATION OCT, 1990.
 © COPYRIGHT 1990 By Tyco Electronics Japan G.K. ALL RIGHTS RESERVED.

REVISIONS 変更				
P	LTR	DESCRIPTION	DATE	APVD
	C3	REVISED PER ECR-17-018149	13DEC2017	SC BH



- 1 適用製品仕様書: 108-5338
- 2 適用コンタクト型番: 175179-□
- 3 嵌合相手側コネクタ型番
 - *リセ・ハウジング: 173974-□
 - *リセ・コンタクト: 170324-□ (AWG #24-#20)
 - 170325-□ (AWG #20-#16)
 - 170326-□ (AWG #18-#14)
- 4 取扱い説明書: IS-545

- 1 PRODUCT SPEC: 108-5338
 - 2 APPLICABLE CONTACT P/N: 175179-□
 - 3 MATING REC. CONNECTOR P/N
 - *REC. HSG: 173974-□
 - *REC. CONT: 170324-□ (AWG #24-#20)
 - 170325-□ (AWG #20-#16)
 - 170326-□ (AWG #18-#14)
 - 4 INSTRUCTION SHEET: IS-545 DFF
- △ MATERIAL: PA66, UL94 V-0, GWIT 775°C

NATURAL	△	1-176448-1
RED		176448-7
BLUE		176448-6
NATURAL		176448-1
COLOR		P/N

WIRE RANGE 抱合電線断面積	INSULATION DIA 被覆外径	TE Connectivity			
mm ²	mm ϕ				
NAME 名称 187 SERIES POSITIVE LOCK MK-II TAB HSG 1POS W-W TYPE 187シリーズ ポジティブ ロック MK-II タブ ハウジング 1極 電線 対 電線 接続用		SIZE	CAGE CODE	DRAWING NO 番号	RESTRICTED TO
		A3	00779	176448	
THIS DRAWING IS A CONTROLLED DOCUMENT. DIMENSIONS: 単位: 耗 mm TOLERANCES UNLESS OTHERWISE SPECIFIED: 一般公差 0 PLC ± 1 PLC ± 2 PLC ± 3 PLC ± 4 PLC ± ANGLES ±		DWN M.SUZUKI 01OCT1990 CHK Y.FUJITA 01OCT1990 APVD N.ONOUE 02OCT1990 PRODUCT SPEC 108-5338 APPLICATION SPEC 取付適用規格 WEIGHT		CUSTOMER DRAWING SCALE 4:1 SHEET 1 OF 1 REV C3	

GENERAL TOLERANCE 一般公差
10 ≥ : ±0.2
30 ≥ > 10: ±0.25
100 ≥ > 30: ±0.3
ANGLES: ±3°

MATERIAL 材料
66 NYLON UL94V-0
66ナイロン UL94V-0