

E

D

C

B

A

E

D

C

B

A

6

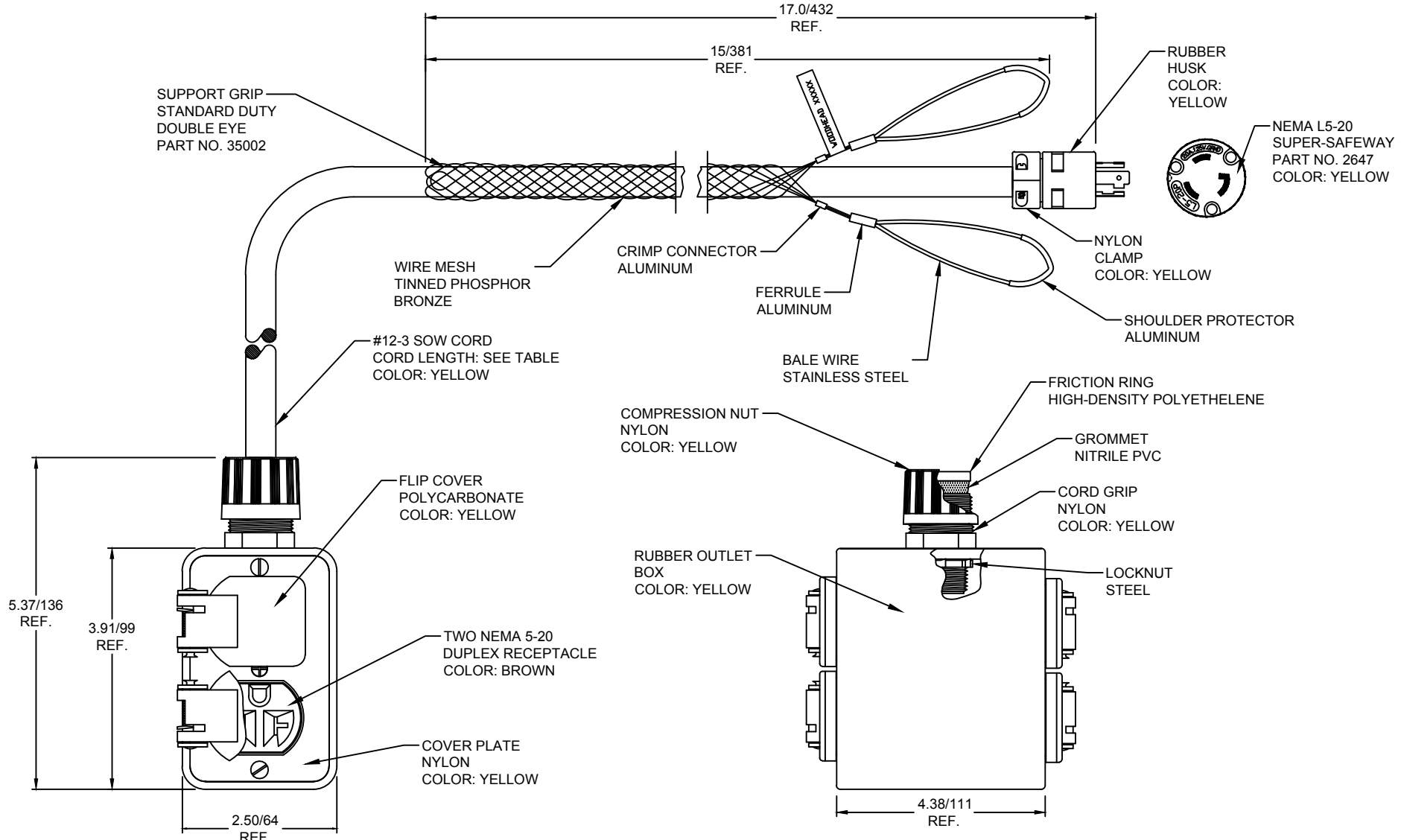
5

4

3

2

1



MATERIAL NO.	ENGINEERING NO.	CORD LENGTH
1301370299	130137-0299	6 FEET
1301370302	130137-0302	8 FEET

ADDED 130137-0302	QUALITY SYMBOLS
EC NO: IPCG2013-0392	▽=0
DRWN: HRUIZ01 11/19/13	▽C=0
CHKD: HKNEELAN	
APPR: JFMURPHY 2013/08/10	
REV	DESCRIPTION
B	

GENERAL TOLERANCES (UNLESS SPECIFIED)	
	mm INCH
4 PLACES	±.005 ±.005
3 PLACES	±.010 ±.010
2 PLACES	±.015 ±.015
1 PLACE	±.020 ±.020
ANGULAR ± 5°	
DRAFT WHERE APPLICABLE MUST REMAIN WITHIN DIMENSIONS	

DIMENSION STYLE	
INCH/MM	
DRAWN BY	DATE
HRUIZ01	2013/07/22
CHECKED BY	DATE
HKNEELAN	2013/07/22
APPROVED BY	DATE
JFMURPHY	2013/08/10
MATERIAL NO.	SEE TABLE
SIZE	A

SCALE	NTS	DESIGN UNITS	INCH	THIRD ANGLE PROJECTION
TITLE				
MULTIPLE OUTLET BOX				
#12-3 SOW CORD				
2647 PLUG AND 35002 GRIP				
MOLEX INCORPORATED				
DOCUMENT NO.				SHEET NO.
SD-130137-037				1 OF 1
THIS DRAWING CONTAINS INFORMATION THAT IS PROPRIETARY TO MOLEX INCORPORATED AND SHOULD NOT BE USED WITHOUT WRITTEN PERMISSION				

6

5

4

3

2

1