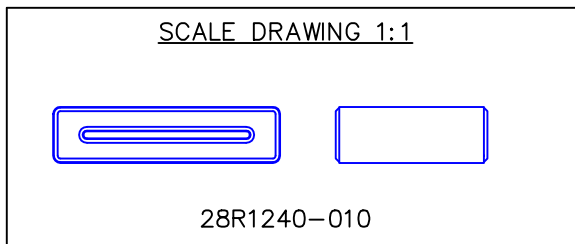


DETAIL "A"  
CHAMFER  
SCALE: 6:1

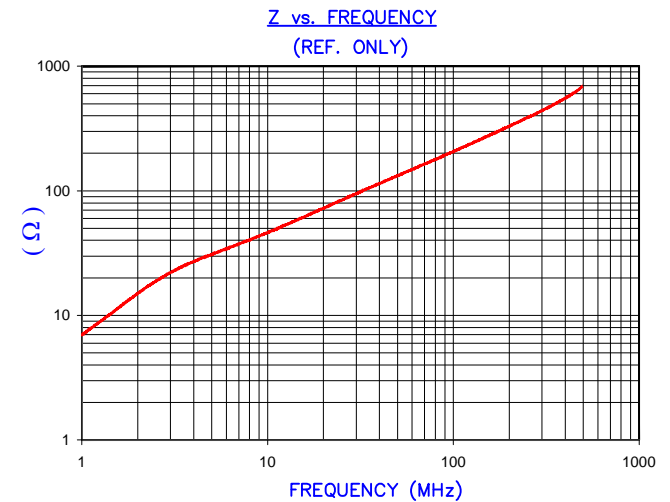
NOTES: UNLESS OTHERWISE SPECIFIED

- PART TO BE FREE OF SIGNIFICANT COSMETIC BLEMISHES OR DISCOLORATION VISIBLE BY THE NAKED EYE FROM A DISTANCE OF 2 METERS. (REFERENCE MASTER VISUAL COMPARISON SAMPLES).

- COSMETIC SPECIFICATION REFER TO WI-QA-038.



IMPEDANCE (Z)			
Frequency	25 MHz	100 MHz	300 MHz
Nominal (REF)	84 Ω	211 Ω	440 Ω
Minimum	- Ω	169 Ω	- Ω



FERRITE CORE DIMENSIONS (SPEC):mm[Inches]

A	31.40 [1.236]	+	0.51 [0.020]
B	23.00 [0.906]	+	0.38 [0.015]
C	21.00 [0.827]	+	0.64 [0.025]
D	7.75 [0.305]	+	0.38 [0.015]
E	1.00 [0.039]	+	0.38 [0.015]

WEIGHT/1000 22.63 kgs [49.89 Lbs]

DIMENSIONS ARE IN INCHES (mm).				This print is the property of Laird Tech. and is loaned in confidence subject to return upon request and with the understanding that no copies shall be made without the written consent of Laird Tech. All rights to design or invention are reserved.			
H	UPDATE COMPANY LOGO	05/29/15	QIU				
G	UPDATE Z SPEC AND COMPANY LOGO	07/27/07	JRK	PROJECT/PART NUMBER: 28R1240-010		REV H	DRAWN BY: JAJ
F	ADD NOTE 1	04/19/04	JRK				
E	UPDATE MIN Z SPEC@100 Mhz, ADD REF #	02/02/04	JRK	DATE: 07/27/99		SCALE: 2 : 1	
D	UPDATE NEW FORMAT AND Z SPECS	02/26/03	JRK				
C	NEW CNZ FORMAT ADD Z CURVE	07/18/02	JRK	CAD # 28R1240-010-H		MATERIAL: FERRITE	
B	UPDATE FORMAT ADD CORNER RADIUS, UPDATE Z SPECS, ADD 25 MHz TO ELECT TESTING, CHG TOLS ON E DIM FROM 0.50[0.020]	01/09/02	JRK				
A	ORIGINAL DRAFT	07/27/99	JAJ	TOOL # R1240			
REV	DESCRIPTION	DATE	INT				