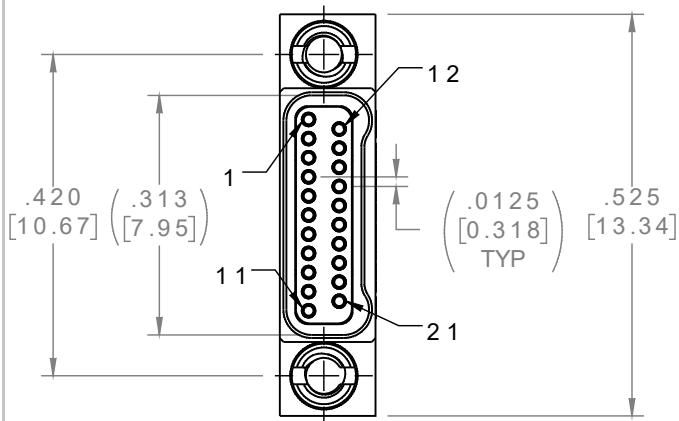


PART NO.	A 40838-021	REV	ECO	DATE	APP
		A	103406	04-19-17	TLM

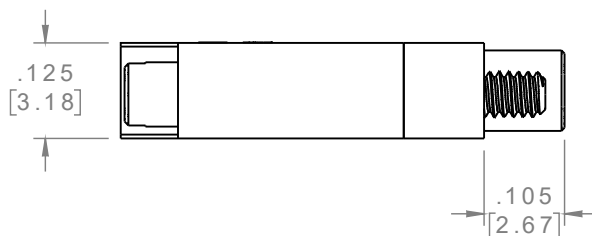
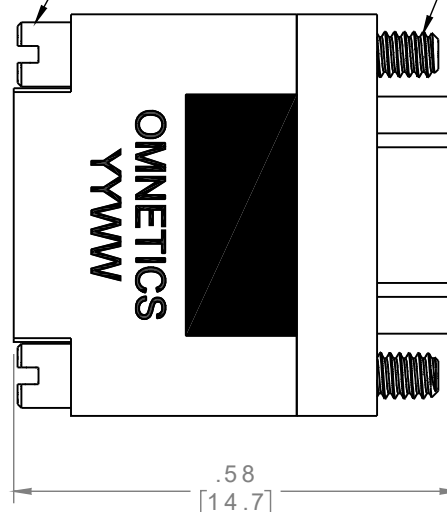
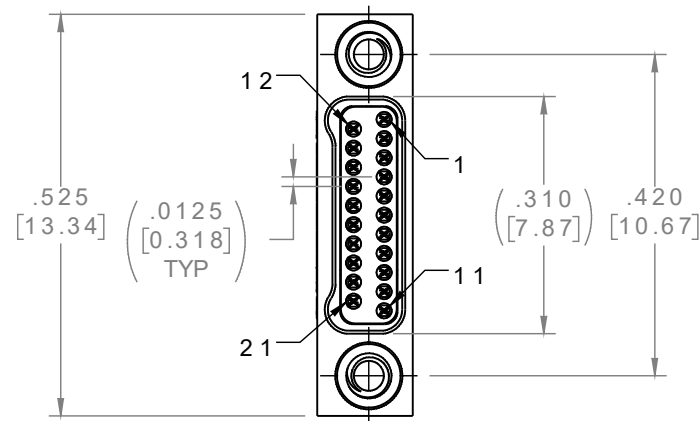
# FEMALE



2 X #0-80  
UNF-2B  
SLOTTED HEAD

2 X #0-80  
UNF-2A

# MALE



ACTUAL SIZE

## MATERIALS:

**INSULATOR:**  
LIQUID CRYSTAL  
POLYMER (LCP) PER  
ASTM D5138

**HOUSING:**  
ALUMINUM 6061-T6,  
NICKEL PLATE PER  
SAE-AMS-2404

**HARDWARE:**  
303 STAINLESS STEEL  
PER ASTM 582

## CONTACTS:

**MALE:**  
BERYLLIUM COPPER  
PER ASTM B194,  
C17200, GOLD PLATED  
PER ASTM B488, (HARD  
GOLD) TYPE II CODE C,  
CLASS 1.27

**FEMALE:**  
COPPER ALLOY PER  
MIL-DTL-32139, GOLD  
PLATED PER ASTM  
B488, (HARD GOLD)  
TYPE II CODE C, CLASS  
1.27

## NOTE:

DIMENSIONS IN [ ] ARE IN  
MILLIMETERS UNLESS  
OTHERWISE NOTED AND ARE  
FOR REFERENCE ONLY

JUM SLDW	THIRD ANGLE
	-TOLERANCES-
	UNLESS OTHERWISE NOTED
	DIMENSIONS IN INCHES
2	PL DEC ± .01
3	PL DEC ± .005
4	PL DEC ± .0005
ANGLES ± 1°	

THIS DRAWING CONTAINS CONFIDENTIAL AND PROPRIETARY INFORMATION WHICH IS THE PROPERTY OF OMNETICS CONNECTOR CORP. THIS DOCUMENT MAY NOT, IN WHOLE OR IN PART, BE DUPLICATED, OR DISCLOSED FOR ANY PURPOSE, WITHOUT WRITTEN PERMISSION FROM OMNETICS CONNECTOR CORP.	
DFTM. ERB	DATE 03-16-17
CHK'D.	DATE
APP'D.	DATE
TITLE: (21) PIN MALE/FEMALE Bi-Lobe® CONNECTOR SAVER	

**OMNETICS**  
CONNECTOR CORPORATION  
7260 COMMERCE CIRCLE EAST  
MINNEAPOLIS, MN 55432  
WWW.OMNETICS.COM

CAGE CODE 61873
DWG NO. A40838-021
SHEET 1 OF 1
SCALE: 4:1
REV A