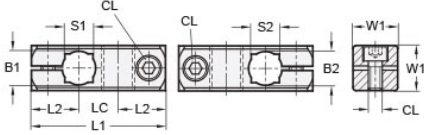




## MT15/15-CC2W-AN

Ruland Two-Way Connector Clamp, Thru Holes 15mmx15mm, L 58mm, Black Anodized Aluminum



### Description

Ruland MT15/15-CC2W-AN a two-way connector clamp with perpendicular thru holes for 15mm round and 12mm square tubes, M6 clamp screws, 20mm width and height, and 58mm overall length. It is designed to fit on Ruland tubes and flange bolt bases that begin with MT15. MT15/15-CC2W-AN is aluminum with a black anodized finish and screws are 304 stainless steel for added corrosion resistance when compared to unplated types. This two-way connector is commonly used to support tubes for mounting sensors, screens, reflectors, plexiglass machine guards, and other industrial components. Thru holes are perpendicular to one another for fixed mounting of components at a 90° angle. MT15/15-CC2W-AN is ideal for applications where the tube angles remain fixed such as on conveyors. MT15:16:20-ALK-M6-25 adjustable clamping handles can be used in place of standard hardware if rapid fine repositioning of the tube(s) is required. MT15/15-CC2W-AN is manufactured by Otto Ganter, inventoried by Ruland, and RoHS3 compliant.

### Product Specifications

<b>Thru Hole 1 Diameter B1</b>	15 mm	<b>Thru Hole 2 Diameter B2</b>	15 mm
<b>Thru Hole Tolerance</b>	+0.11/-0 mm	<b>Thru Hole 2 Tolerance</b>	+0.11/-0 mm
<b>Overall Length L1</b>	58 mm	<b>Edge To Center L2</b>	20.5 mm
<b>Center To Center LC</b>	17 mm	<b>Square Thru Hole 1 S1</b>	12 mm
<b>Square Thru Hole 2 S2</b>	12 mm	<b>Width &amp; Height W1</b>	20 mm
<b>Clamp Screw CL</b>	M6	<b>Weight (lbs)</b>	0.097000
<b>Material Specification</b>	Anodized Aluminum	<b>Manufacturer</b>	JW Winco/ Otto Ganter
<b>UPC</b>	634529231500	<b>Country of Origin</b>	Germany
<b>Tariff Code</b>	7609.00.0000		

**Note 1** Performance ratings are for guidance only. The user must determine suitability for a particular application.

**Prop 65**  **WARNING** This product can expose you to the chemical Nickel (metallic), known to the State of California to cause cancer. For more information go to [www.P65Warnings.ca.gov](http://www.P65Warnings.ca.gov).