

PART NUMBER CODING

B **DYH** **-S**

MATERIAL (INSULATOR/CONTACT)

- R = BLACK, PPS/PHOSPHOR BRONZE**
OPERATING TEMP: -65°C TO +125°C
PROCESSING TEMP: 260°C MAX FOR 20 SECONDS
- G = BLACK, PA9T/PHOSPHOR BRONZE**
OPERATING TEMP: -65°C TO +125°C
PROCESSING TEMP: 260°C MAX FOR 20 SECONDS
- A = BLACK, PPS/BERYLLIUM COPPER**
OPERATING TEMP: -65°C TO +150°C
PROCESSING TEMP: 260°C MAX FOR 20 SECONDS
- J = BLACK, PA9T/BERYLLIUM COPPER**
OPERATING TEMP: -65°C TO +150°C
PROCESSING TEMP: 260°C MAX FOR 20 SECONDS
- *F = BLACK, PPS/SPINODAL**
OPERATING TEMP: -65°C TO +200°C
PROCESSING TEMP: 260°C MAX FOR 20 SECONDS
(CONSULT FACTORY FOR SPECIAL SOLDERING GUIDELINES)
- *X = NATURAL, PEEK/SPINODAL**
OPERATING TEMP: -65°C TO +250°C
PROCESSING TEMP: 260°C MAX FOR 20 SECONDS
(CONSULT FACTORY FOR SPECIAL SOLDERING GUIDELINES)
*AVAILABLE IN 'M' PLATING ONLY

NUMBER OF POSITIONS
(CONTACTS PER ROW)

PLATING

ALL PLATINGS ARE LEAD FREE AND HAVE .000050" NICKEL UNDERPLATE

CONTACT SURFACE

- B = .000010" GOLD
- C = .000030" GOLD
- N = .000050" GOLD
- M = .000030" GOLD

TERMINATION

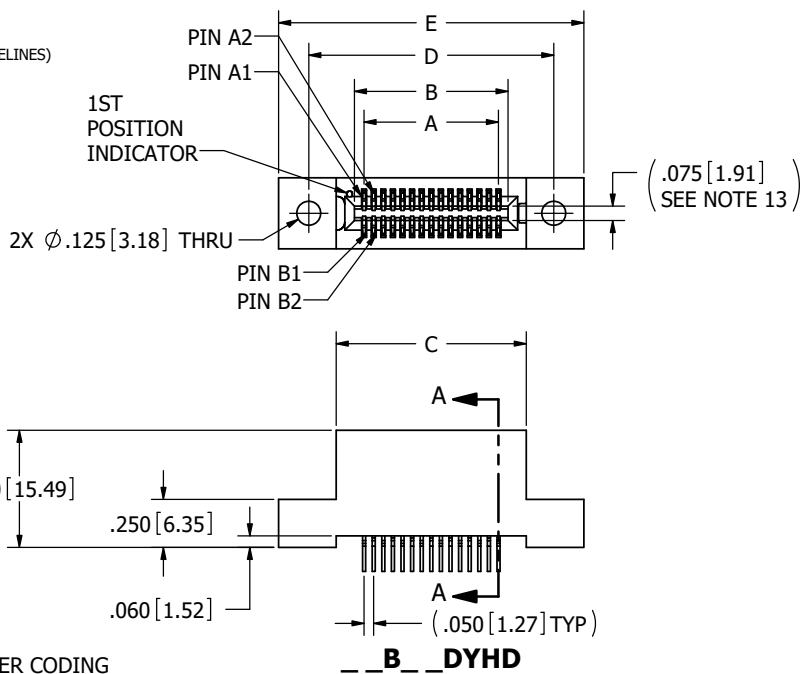
- .000100" PURE TIN, MATTE
- .000100" PURE TIN, MATTE
- .000100" PURE TIN, MATTE
- .000010" GOLD OVERALL

MODIFICATION

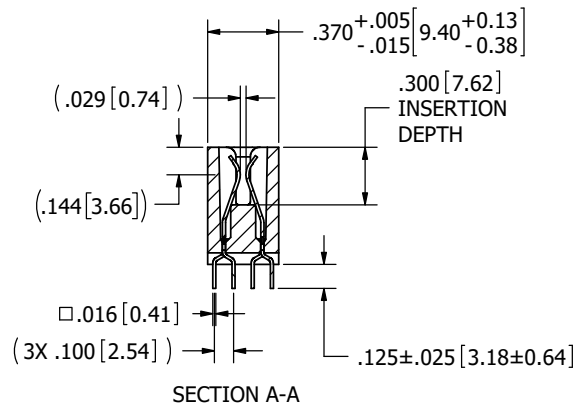
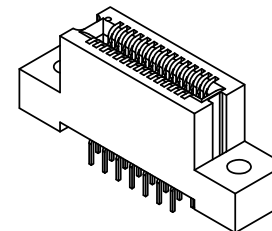
OMIT FOR STANDARD, EX: 'RBB15DYHD'
S# FOR MOLDED KEY
(SEE DRAWING C13556 FOR S#, 'G', & 'H' DIMENSIONS)

MOUNTING STYLE

- D = FLUSH MOUNTING (PAGE 1)
- N = NO MOUNTING EARS (PAGE 2)
- T = FLUSH MOUNTING, WITH THREADED INSERTS (PAGE 2)
- R = METAL BOARD LOCKS (PAGE 2)
- B = OPEN CARD SLOT



REVISIONS				
REV.	ECO. NO	DESCRIPTION	DATE	BY
E	4402	UPDATED DIMENSION TABLE TO INCLUDE ALL POSITIONS; ADD MOLDED KEY OPTION; ADD "B" MOUNTING OPTION; UPDATE BOM TABLES	7/22/2021	NBY, PL
F	4614	ADD 'X' MATERIAL, INCREASE CONTACT SURFACE RADIUS BIGGER	1/5/2023	JH
H	4626	UPDATE NOTE 11 (WAS '500 CYCLES'), UPDATE NOTE 8 (REMOVE 'PER CONTACT')	2/8/2023	MM



NOTES:

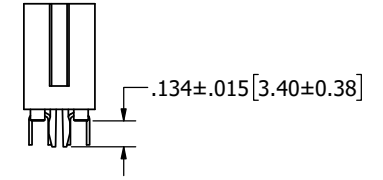
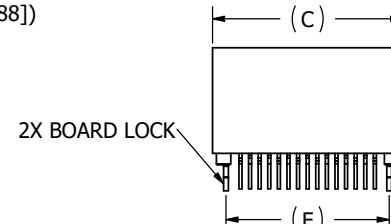
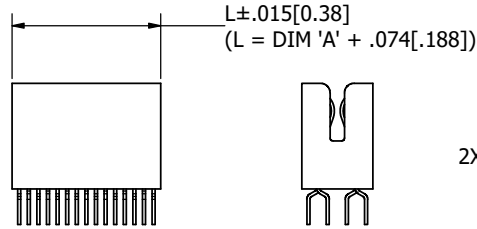
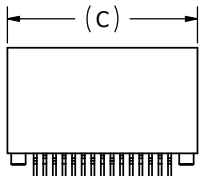
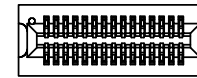
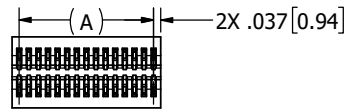
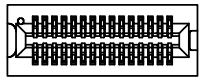
1. INSULATOR MATERIAL: SEE PART NUMBER CODING
2. CONTACT MATERIAL: SEE PART NUMBER CODING
3. PLATING: SEE PART NUMBER CODING
4. OPERATING TEMPERATURE: SEE PART NUMBER CODING
5. PROCESSING TEMP: SEE PART NUMBER CODING
6. UL FLAMMABILITY RATING: 94V-0
7. OPERATING VOLTAGE: 300 VAC
8. CURRENT RATING: 1 AMP
9. CONTACT RESISTANCE: 30 MILLI OHMS MAX
10. INSULATION RESISTANCE: 5000 MEGA OHM
11. DURABILITY: 5000 CYCLES MINIMUM
12. CONNECTOR IDENTIFICATION: THE PART SHALL BE MARKED WITH A PART NUMBER AND LOT CODE
13. BOARD THICKNESS ACCOMMODATED: .062 ± .008 [1.57 ± 0.20]
14. INSERTION FORCE: 6 OZ MAX PER CONTACT PAIR WHEN USING A .062 [1.57] TEST BLADE
INTERNAL INSPECTION TO BE PER SULLINS WORK INSTRUCTION WI-8.6-03
15. WITHDRAWAL FORCE: 1/2 OZ MINIMUM PER CONTACT PAIR USING .062 [1.57] TEST BLADE
16. MODIFICATION: SEE PART NUMBER CODING



RoHS COMPLIANT

CUSTOMER COPY

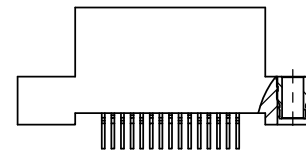
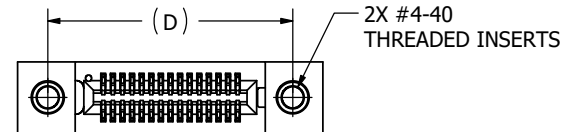
UNLESS OTHERWISE SPECIFIED: DIMENSIONS ARE IN INCHES (MM)		DRAWN	DATE	NAME	
TOLERANCES: ANGULAR: ± 1° DECIMALS .XX = ± .02 [5] .XXX = ± .005 [13] .XXXX = ± .0005 [013]			06/18/10	TT	
TITLE EDGE CARD, .050" CC, CANTILEVER					PART NUMBER B DYH -S
SCALE: 2:1		SIZE	CAGE CODE	DWG. NO.	
		C	54453	C11419	H
SHEET 1 OF 3					



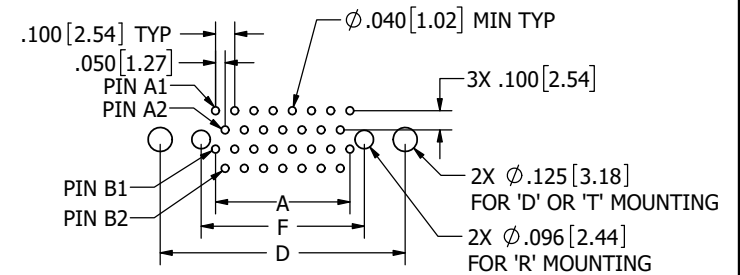
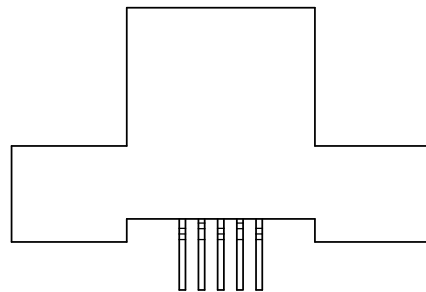
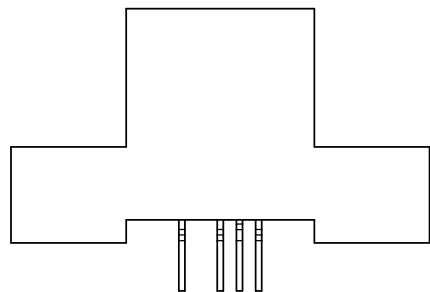
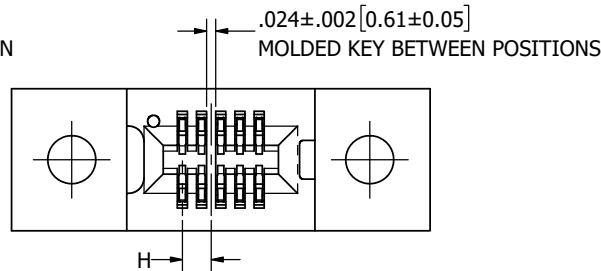
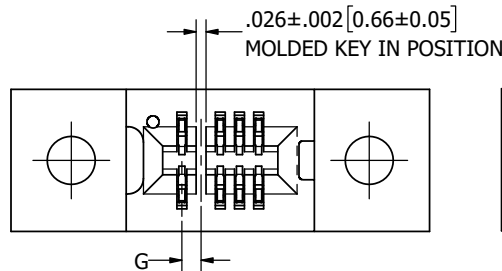
__B__DYHN

__B__DYHB

__B__DYHR



__B__DYHT



RECOMMENDED PCB LAYOUT

CUSTOMER COPY

**S# MODIFICATION
('D' MOUNT AS SHOWN FOR EXAMPLE, SCALE 4:1)**



RoHS COMPLIANT

UNLESS OTHERWISE SPECIFIED, DIMENSIONS ARE IN INCHES (MM)		DRAWN	DATE	NAME	
TOLERANCES: ANGULAR: ± 1° DECIMALS .XX = ± .02 [5] .XXX = ± .005 [13] .XXXX = ± .0005 [013]		TT	06/18/10	TT	
THE INFORMATION HEREIN CONTAINS PROPRIETARY INFORMATION OF SULLINS ELECTRONICS AND IS NOT TO BE REPRODUCED, USED OR DISCLOSED TO OTHERS FOR ANY PURPOSE EXCEPT AS SPECIFICALLY AUTHORIZED IN WRITING BY AN OFFICER OF SULLINS ELECTRONICS.		PART NUMBER		B_DYH -S	
SIZE	CAGE CODE	DWG. NO.	REV		
C	54453	C11419	H		
SCALE: 2:1		SHEET 2 OF 3			

