

## Han 24Mod Docking Frame Fixed, Set

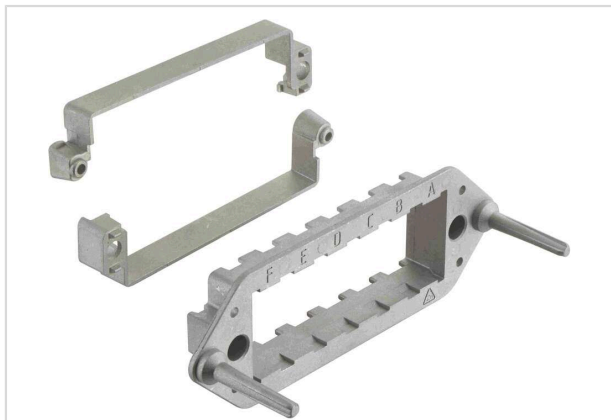


Image is for illustration purposes only. Please refer to product description.

Part number	09 14 024 1716
Specification	Han 24Mod Docking Frame Fixed, Set
HARTING eCatalogue	<a href="https://b2b.harting.com/09140241716">https://b2b.harting.com/09140241716</a>

### Identification

Category	Accessories
Series	Han-Modular®
Type of accessory	Docking frame
Description of the accessory	Fixed for 6 modules A ... F

### Version

Details	Rated voltage $\leq 630$ V
	Rated impulse voltage $\leq 6$ kV
	Pollution degree 2
	For a complete connector the specified voltage rating is the maximum level which can be achieved. In cases where the used module(s) do offer lower voltage ratings, then these lower ratings are valid. Higher voltage ratings in individual applications can be approved in coordination with HARTING.

### Technical characteristics

Limiting temperature	-40 ... +125 °C
Mating cycles	$\geq 500$
Mating cycles with other HMC components	$\geq 10,000$
Floating tolerance	$\pm 2$ mm
Lock-in range	$\pm 4$ mm

### Material properties

Material	Zinc die-cast
RoHS	compliant



**Pushing Performance**  
Since 1945

## Material properties

ELV status	compliant
China RoHS	e
REACH Annex XVII substances	Not contained
REACH ANNEX XIV substances	Not contained
REACH SVHC substances	Not contained
California Proposition 65 substances	Yes
California Proposition 65 substances	Lead Nickel

## Specifications and approvals

Specifications	IEC 60664-1 IEC 61984
----------------	--------------------------

## Commercial data

Packaging size	1
Net weight	221 g
Country of origin	China
European customs tariff number	85389099
GTIN	5713140194601
eCl@ss	27440206 Module carrier frame for industrial connectors