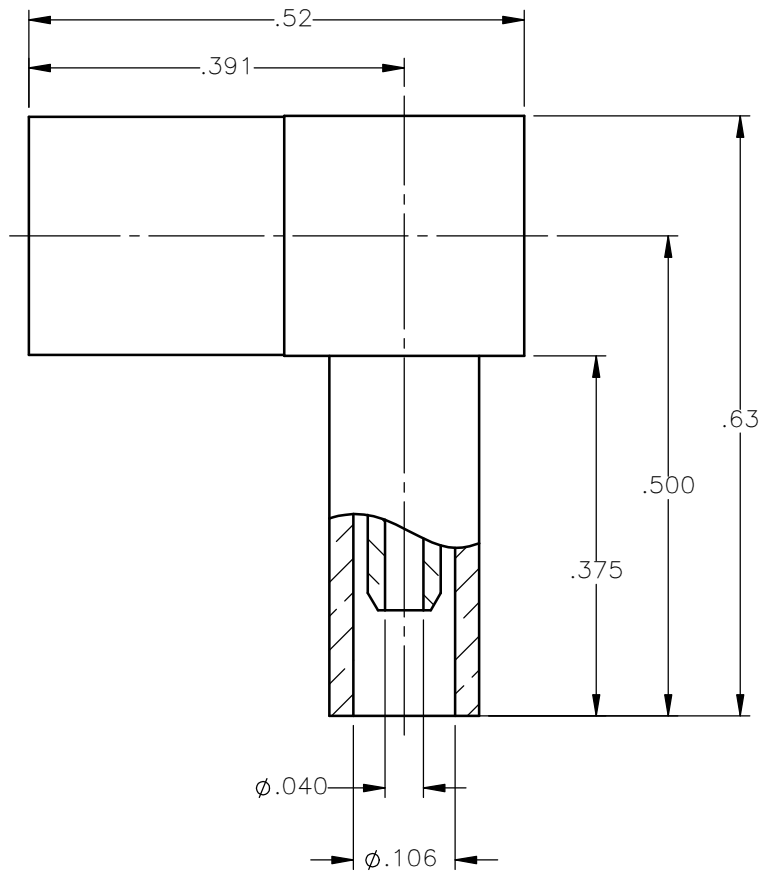
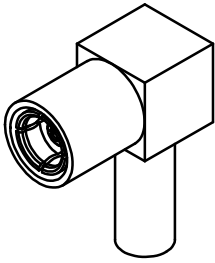


| REVISIONS |                 |          |          |
|-----------|-----------------|----------|----------|
| REV.      | DESCRIPTION     | DATE     | APPROVED |
| A         | INITIAL RELEASE | 06/18/13 | D.N.     |






NOTES:

MATERIALS;

1. INSULATORS = VIRGIN WHITE TEFLON PER ASTM D1710, GRADE 1, TYPE I, CLASS "B".
2. CONTACT & SPRING = BERYLLIUM COPPER PER ASTM B196, ALLOY C17300, TEMPER TD04.
3. SLEEVE = BRASS PER C36000.
4. CRIMP SLEEVE = SEAMLESS LOWLEAD BRASS TUBE, ALLOY 330, SOFT ANNEAL TEMPER, .025/.060 GRAIN SIZE OR SEAMLESS COPPER TUBE PER ASTM B75, TYPE C12000, TEMPER: LIGHT ANNEAL O50 EXCEPT YIELD STRENGTH..
5. ALL OTHER METAL PARTS = BRASS PER ASTM B16, ALLOY C36000, TEMPER H02.

FINISHES:

1. CONTACT = GOLD PLATE PER MIL-G-45204, TYPE II, CLASS 1, GRADE C, OVER .00010 TO .00020 STRESS FREE SULFAMATE NICKEL PER QQ-N-290.
2. ALL OTHER METAL PARTS = NICKEL PLATE PER QQ-N-290, CLASS 1, GRADE G, EXCEPT .0001 TO .0002 THICK OVER .00005 TO .0001 THICK COPPER PER MIL-C-14550.

|   |                       |          |   |  |          |   |     |
|---|-----------------------|----------|---|--|----------|---|-----|
| UNLESS OTHERWISE SPECIFIED<br>DIMENSIONS ARE IN INCHES<br>TOLERANCES ON | DWN:                  | DATE     |  | Property of Radiall  |          |  |     |
|   | D.N.                  | 06/18/13 |   | This document cannot be reproduced or<br>communicated to a third party without prior<br>written permission of RADIALL. |          |   |     |
| DECIMAL   | ANGLE                 | CHKD:    | DATE  | SMB RIGHT ANGLE FEMALE PLUG<br>CRIMP TYPE<br>FOR RD-178 CABLE  |          |   |     |
|   |                       | J.S.     | 06/18/13  |  |          |   |     |
|   |                       | APVD:    | DATE  | SIZE   | FSCM NO. | DWG NO.   | REV |
|   |                       | J.M.     | 06/18/13  | A  | 19505    | 2105-7521-025   | A   |
| REFERENCE:  | MATERIALS & FINISHES: |          | SCALE   | THIRD ANGLE PROJECTION   |          | SHEET 1 OF 1  |     |
| ORIGINATED: D.N.<br>DATE: 06/18/13                                      | SEE NOTES             |          | 5:1   |                                   |          |   |     |

2105-7521-025