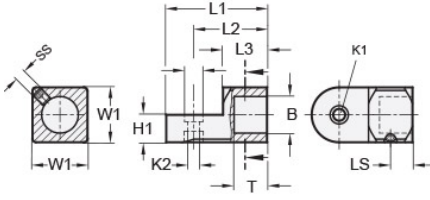




MT20-CSSWBH-AN

Ruland Set Screw Swivel Clamp Joint, Swivel Thru Hole 6.5mm, Thru Hole 20mm, L 55mm, Black Anodized Aluminum



Description

Ruland MT20-CSSWBH-AN is a swivel clamp joint with a blind hole for 20mm round tube, M6 set screws, 15mm base height, 30mm width and height, and 55mm overall length. It is designed to fit with MT20 swivel clamp bases, MT20 clamp connectors and mounting blocks, and MT20 round tubes. When combined with a swivel bases or attachment clamp joints, it is an ideal articulating mounting solution for screens, sensors, reflectors, plexiglass machine guards, and other components that require frequent adjustments. The blind hole reduces complication in assembly and limits the possibility of a mistake being made by inserting a tube too far into the connector for it to function properly. An MT20-SWALK-M6-30 adjustable clamping handle can be used to join it to other Ruland swivel components for rapid repositioning without the use of tools. This part is aluminum with a black anodized finish for added corrosion resistance when compared to unplated types. MT20-CSSWBH-AN is manufactured by Otto Ganter, inventoried by Ruland, and RoHS3 compliant.

Product Specifications

Thru Hole Diameter B	20 mm	Counterbore 1 Diameter K1	10 mm
Counterbore 2 Diameter K2	6.5 mm	Overall Length L1	55 mm
Hub Length LH	24 mm	Edge To Center L2	40 mm
Base Height H1	15 mm	Width & Height W1	30 mm
Hole Depth T	18 mm	Set Screw SS	M6
Screw To Edge LS	12 mm	Material Specification	Anodized Aluminum
Manufacturer	JW Winco/ Otto Ganter	Country of Origin	Germany
Weight (lbs)	0.176400	UPC	634529230329
Tariff Code	7609.00.0000	UNSPC	31162908

Note 1 Performance ratings are for guidance only. The user must determine suitability for a particular application.

Prop 65  **WARNING** This product can expose you to the chemical Nickel (metallic), known to the State of California to cause cancer. For more information go to www.P65Warnings.ca.gov.