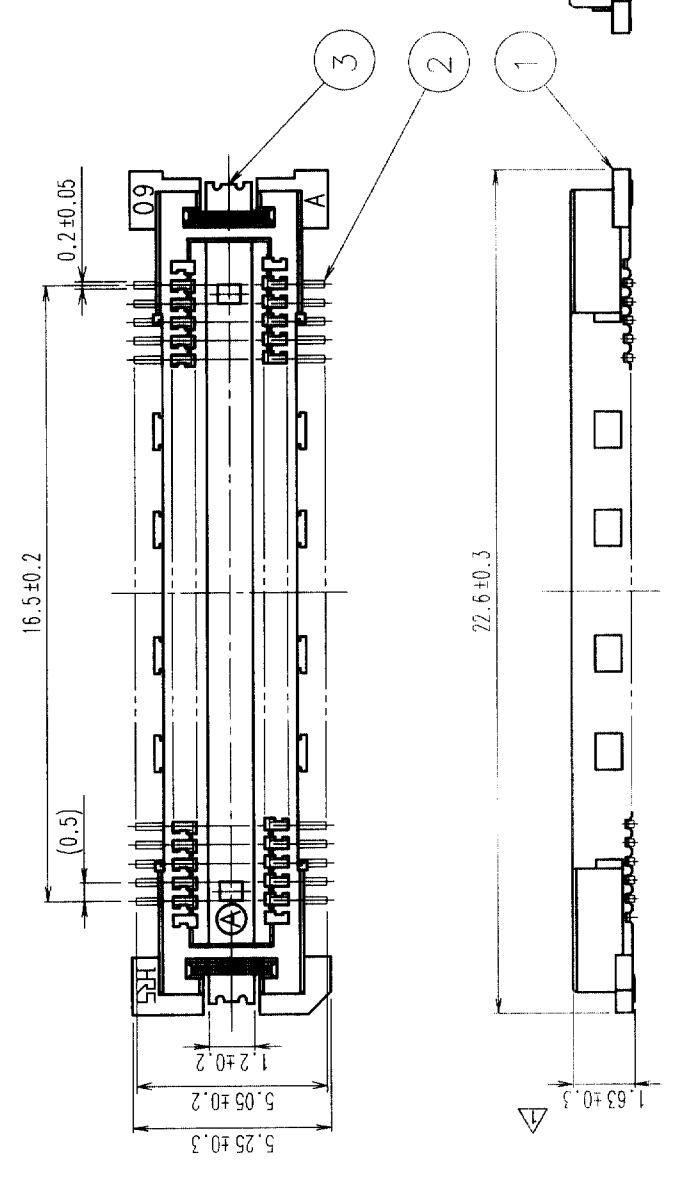
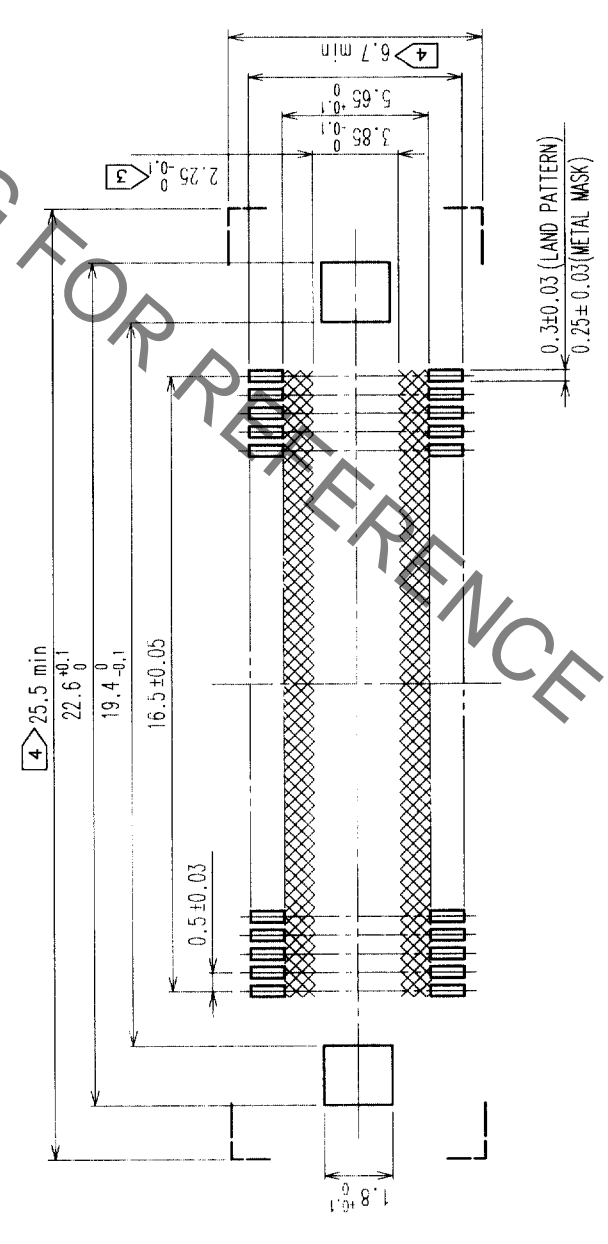


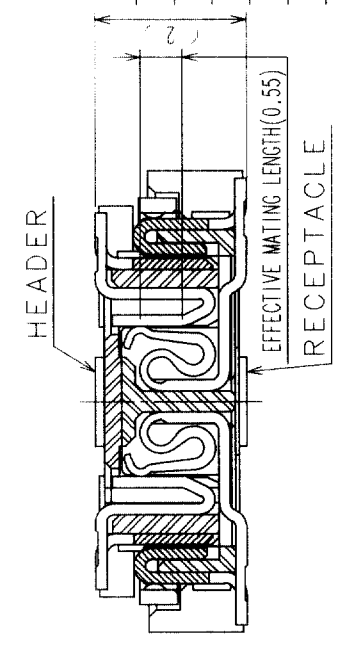
COUNT	DESCRIPTION OF REVISIONS	BY	CHKD	DATE	COUNT	DESCRIPTION OF REVISIONS	BY	CHKD	DATE
3	RE-F-06522	J.M	m	99.9.7					



RECOMMENDED LAND PATTERN DIMENSION OF PCB



SIGNAL PORTION CROSS SECTION (10:1)



- NOTES
- SMT LEAD-COPLANARITY: 0.1 MAX.
 - THIS PRODUCT HAS NO POLARITY TO PATTERN FOR MOUNTING.
 - MAKE SURE WIDTH OF PATTERN IS WITHIN THAT OF LAND, OR LEAD MAY TOUCH PATTERN. (THIS APPLIES TO HATCHED AREA.)
 - DO NOT MOUNT OTHER DEVICES ONTO [] AREA, OR MATING PAIR CANNOT BE MATED.

NO.	COPPER ALLOY	CONTACT AREA: GOLD (0.1µm) OVER NICKEL	LEAD: GOLD FLASH OVER NICKEL	PHOSPHOR BRONZE	TIN PLATED
2	COPPER ALLOY				
1	LCP	BEIGE	UL94V-0	3	
NO.	MATERIAL	FINISH, REMARKS	NO.	MATERIAL	FINISH, REMARKS
CODE NO. (OLD)	CL		DRAWN	DESIGNED	CHECKED
			S.Kitajima	J.Matsukawa	M.Ishida
			990525	990525	990526
			990527	990527	990527
DRAWING NO.		PART NO.			
EDC3-152104		FX11LB-68P-SV			
SCALE		CODE NO.			
5:1		CL573-0052-5			
UNITS		HIROSE ELECTRIC CO., LTD.			
mm					

TO	
PCK	