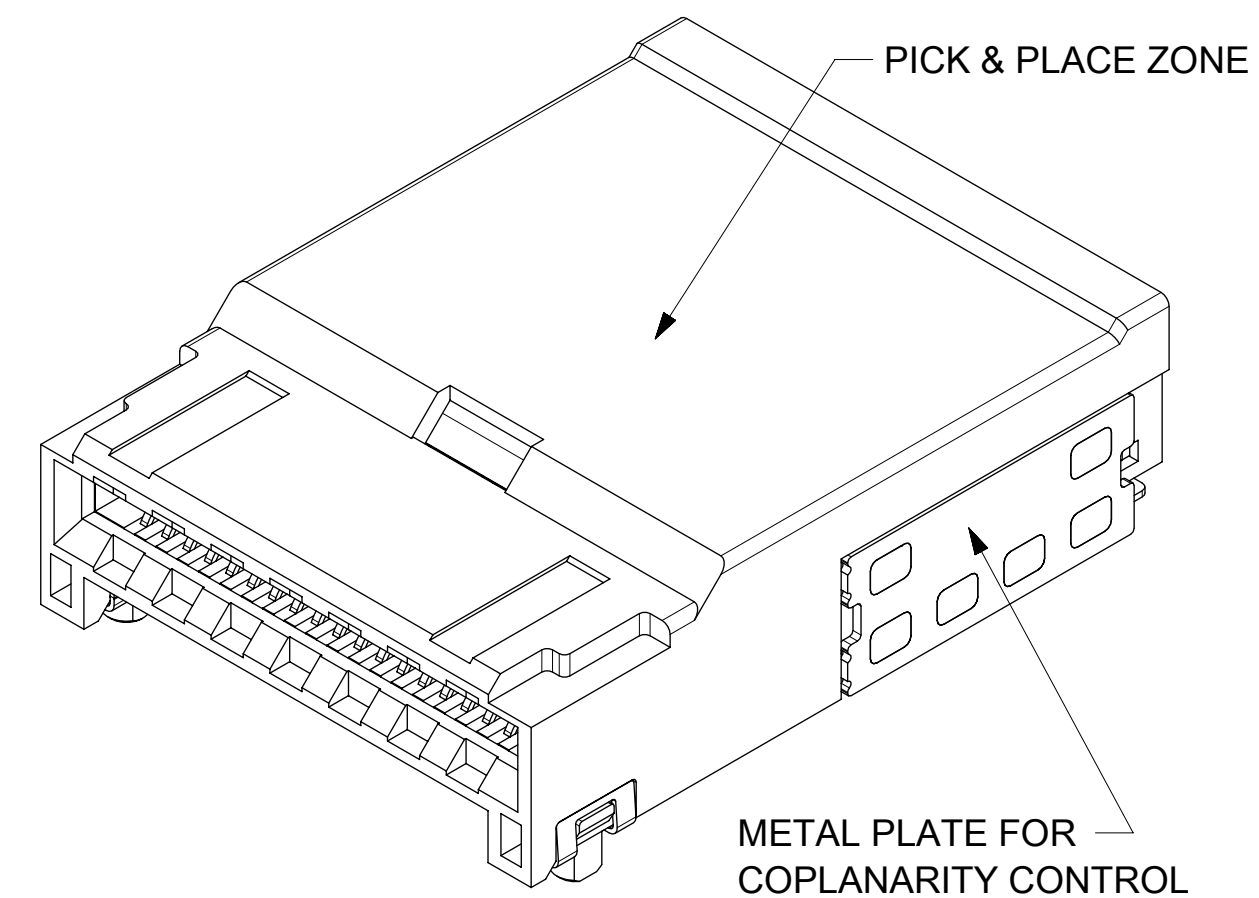


NOTES

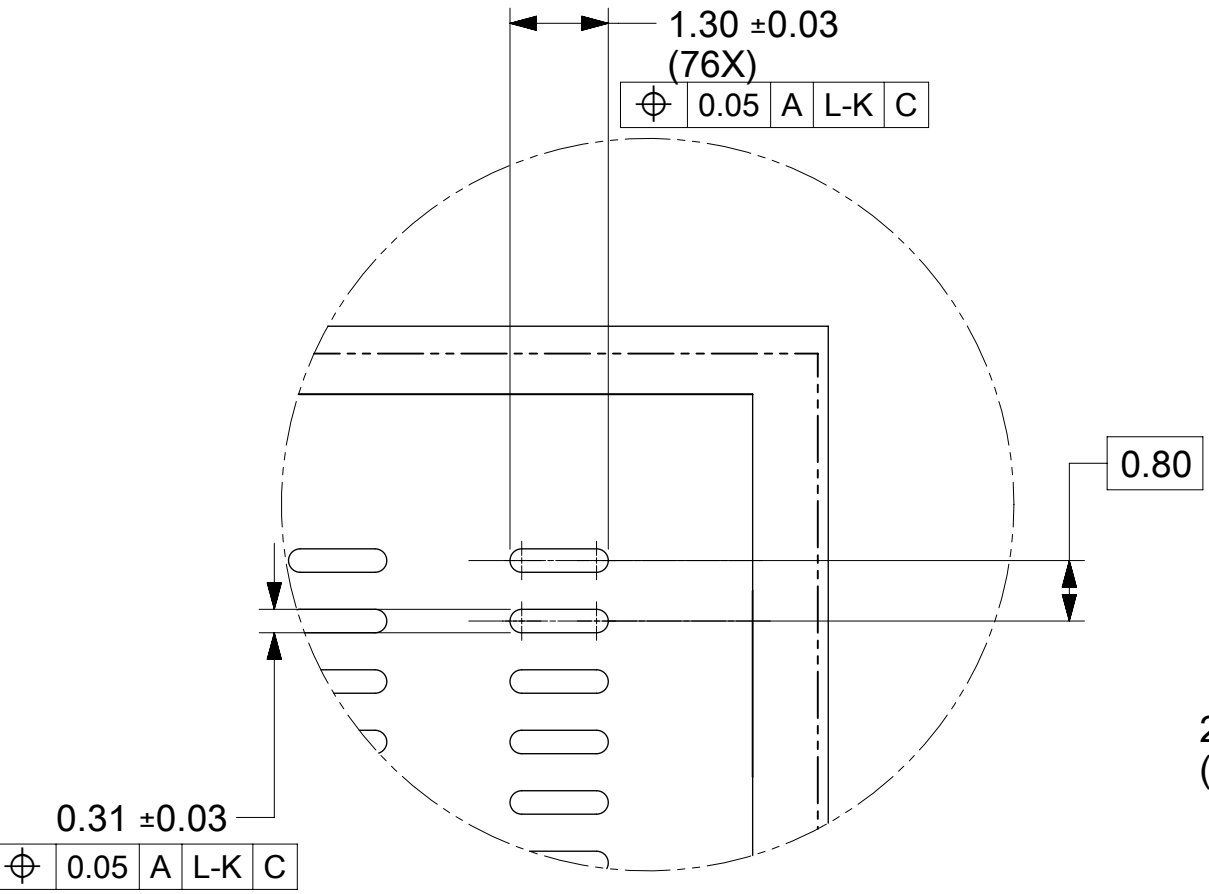
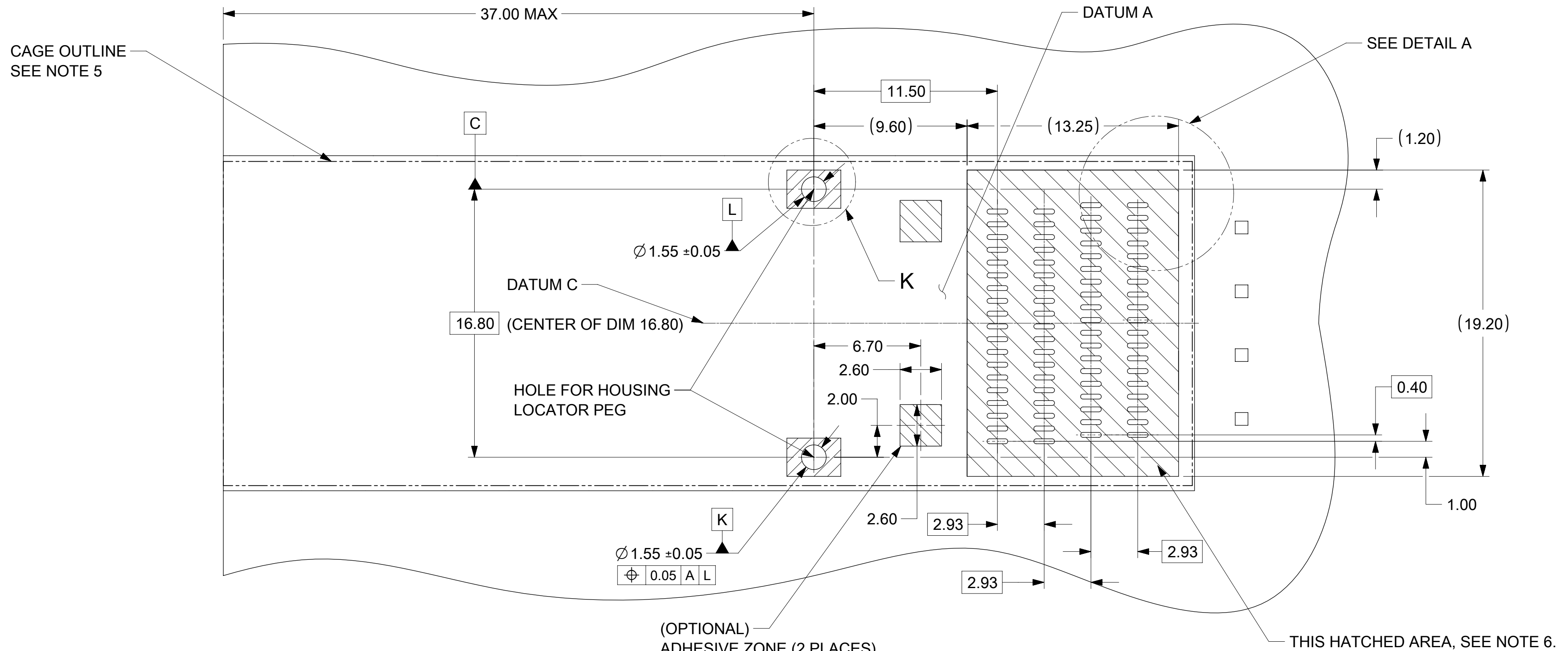
1. MATERIAL:
 - HOUSING - HIGH TEMPERATURE THERMOPLASTIC GLASS FILLED. UL 94V-0. BLACK.
 - TERMINALS - COPPER ALLOY
 - SOLDER RING / NAIL: COPPER ALLOY
 - SIDE PLATE: STAINNESS STEEL
 - TAIL RETAINER: NICKEL-SILVER ALLOY
2. PLATING:
 - a) CONTACT AREA: 0.76 μm MIN. HARD GOLD OVER 3.81 μm MIN. ELECTROPLATED SEMI BRIGHT NICKEL.
 - b) SOLDER AREA: 2.54 - 6.50 μm MATTE TIN OVER 0.76 μm MIN. ELECTROPLATED SEMI BRIGHT NICKEL.
 - c) OVERALL: 0.76 μm MIN. ELECTROPLATED SEMI BRIGHT NICKEL.
3. TERMINAL SOLDER FEET TO BE COPLANAR WITHIN 0.10/004 MEASURED FROM FRONT HOUSING STAND OFF (DATUM -BB-)
4. DATE CODE: 4 DIGIT (3 DIGIT DATE, 1 DIGIT YEAR)
5. CIRCUIT IDENTIFIER: SEE APPROPRIATE INDUSTRY SPECIFICATION FOR LOCATION OF PIN 1
6. PACKAGED PER PACKING SPECIFICATION: 2147334000-PK
7. CONFORMS TO PRODUCT SPECIFICATION: 2162520004-PS
8. APPLICATION SPECIFICATION: TBD
9. THIS PART CONFORMS TO CLASS C REQUIREMENTS OF COSMETIC SPECIFICATION PS-45499-002



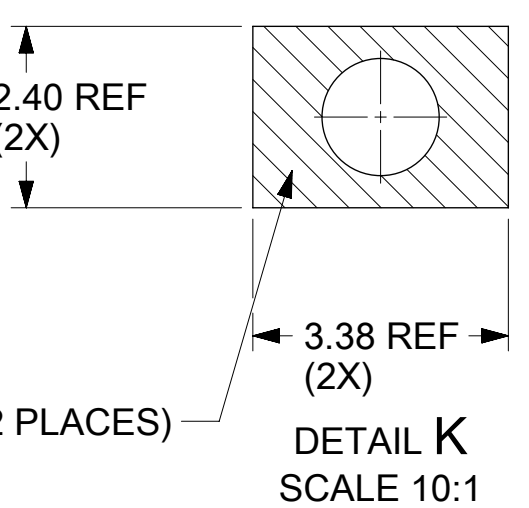
THIS DRAWING CONTAINS INFORMATION THAT IS PROPRIETARY TO MOLEX ELECTRONIC TECHNOLOGIES, LLC AND SHOULD NOT BE USED WITHOUT WRITTEN PERMISSION									
SYMBOLS	DIMENSION UNITS	SCALE	CURRENT REV DESC:						
▽ = 0	mm	5:1	EC NO: 713013 DRWN: RCHEN55 2021/07/15 CHK'D: JKACHLIC 2022/07/28 APPR: JKACHLIC 2022/07/28 INITIAL REVISION: DRWN: LZHUANG06 2020/03/16 APPR: IGORH 2021/05/10						
▽ = 0	GENERAL TOLERANCES (UNLESS SPECIFIED)								
▽ = 0	ANGULAR TOL ± 1.0°								
▽ = 0	4 PLACES ±								
▽ = 0	3 PLACES ±		ASSEMBLY 112G DDQ SMT CONNECTOR 76CKT PRODUCT CUSTOMER DRAWING						
▽ = 0	2 PLACES ± 0.13								
▽ = 0	1 PLACE ± 0.25		DOCUMENT NUMBER		DOC TYPE	DOC PART	REVISION	2147334000 PSD 000 A2	
▽ = 0	0 PLACES ±		2147334000						
▽ = 0	DRAFT WHERE APPLICABLE MUST REMAIN WITHIN DIMENSIONS		THIRD ANGLE PROJECTION	DRAWING	SERIES	MATERIAL NUMBER	CUSTOMER	SHEET NUMBER	
▽ = 0				C-SIZE	214733	2147334000		1 OF 5	

DOCUMENT STATUS	P1	RELEASE DATE	2022/07/28	01:22:28
-----------------	----	--------------	------------	----------

MOTHERBOARD FOOTPRINT RECOMMENDATION



(OPTIONAL)
ADHESIVE ZONE (2 PLACES)
KEEP OUT ZONE
NO COMPONENT
NO COPPER
WITH SOLDER MASK
SEE NOTE 1 AND 3



DETAIL A
SCALE 10:1

SOLDER RING PAD(2 PLACES)
KEEP OUT ZONE
COMPONENT-NO
COPPER-YES
SOLDER MASK-NO

DETAIL K
SCALE 10:1

NOTE:

- SMT ADHESIVE IS RECOMMENDED FOR USE WITH TWO PASS REFLOW PROCESS.
- CONNECTOR SOLDER RING IS RECOMMENDED FOR USE WITH TWO PASS REFLOW PROCESS. REDUCE SIZE OF 2.00X4.00 CAGE COPPER PAD TO MAINTAIN GAP OF AT LEAST 0.13MM BETWEEN SOLDER RING PAD AND CAGE COPPER PAD.
- SEE APPLICATION SPECIFICATION TBD FOR MORE DETAILS ON TWO PASS REFLOW PROCESS WHERE CONNECTOR IS ON UNDERSIDE OF PCB DURING SECOND PASS.
- SEE APPLICATION SPECIFICATION TBD FOR STENCIL RECOMMENDATION. STENCIL RECOMMENDATION IS A GUIDELINE ONLY. MANUFACTURING PROCESS PARAMETERS WILL DEFINE THE ACTUAL STENCIL.
RECOMMENDED STENCIL THICKNESS: 0.13MM (.005"). APERTURE RATIO: 1: 1.2
SOLDER FOOT: ~100% OF PAD
SOLDER RING: ~45% OF PAD
- SEE MOLEX CAGE DRAWING 2031433201 OR MSA OF QSFP-DD800 FOR CAGE LAYOUT
- CONNECTOR KEEP OUT ZONE.

SYMBOLS		THIS DRAWING CONTAINS INFORMATION THAT IS PROPRIETARY TO MOLEX ELECTRONIC TECHNOLOGIES, LLC AND SHOULD NOT BE USED WITHOUT WRITTEN PERMISSION		CURRENT REV DESC:	
DIMENSION UNITS	SCALE				
▽ = 0	mm	5:1			
▽ = 0	GENERAL TOLERANCES (UNLESS SPECIFIED)				
▽ = 0	ANGULAR TOL ± 1.0°				
▽ = 0	4 PLACES	±	EC NO: 713013		
▽ = 0	3 PLACES	±	DRWN: RCHEN55 2021/07/15		
▽ = 0	2 PLACES	± 0.13	CHK'D: JKACHLIC 2022/07/28		
▽ = 0	1 PLACE	± 0.25	APPR: JKACHLIC 2022/07/28		
▽ = 0	0 PLACES	±	INITIAL REVISION:		
▽ = 0	DRAFT WHERE APPLICABLE MUST REMAIN WITHIN DIMENSIONS		THIRD ANGLE PROJECTION		DRAWING SERIES
▽ = 0			C-SIZE 214733		MATERIAL NUMBER CUSTOMER SHEET NUMBER
				2147334000 2 OF 5	



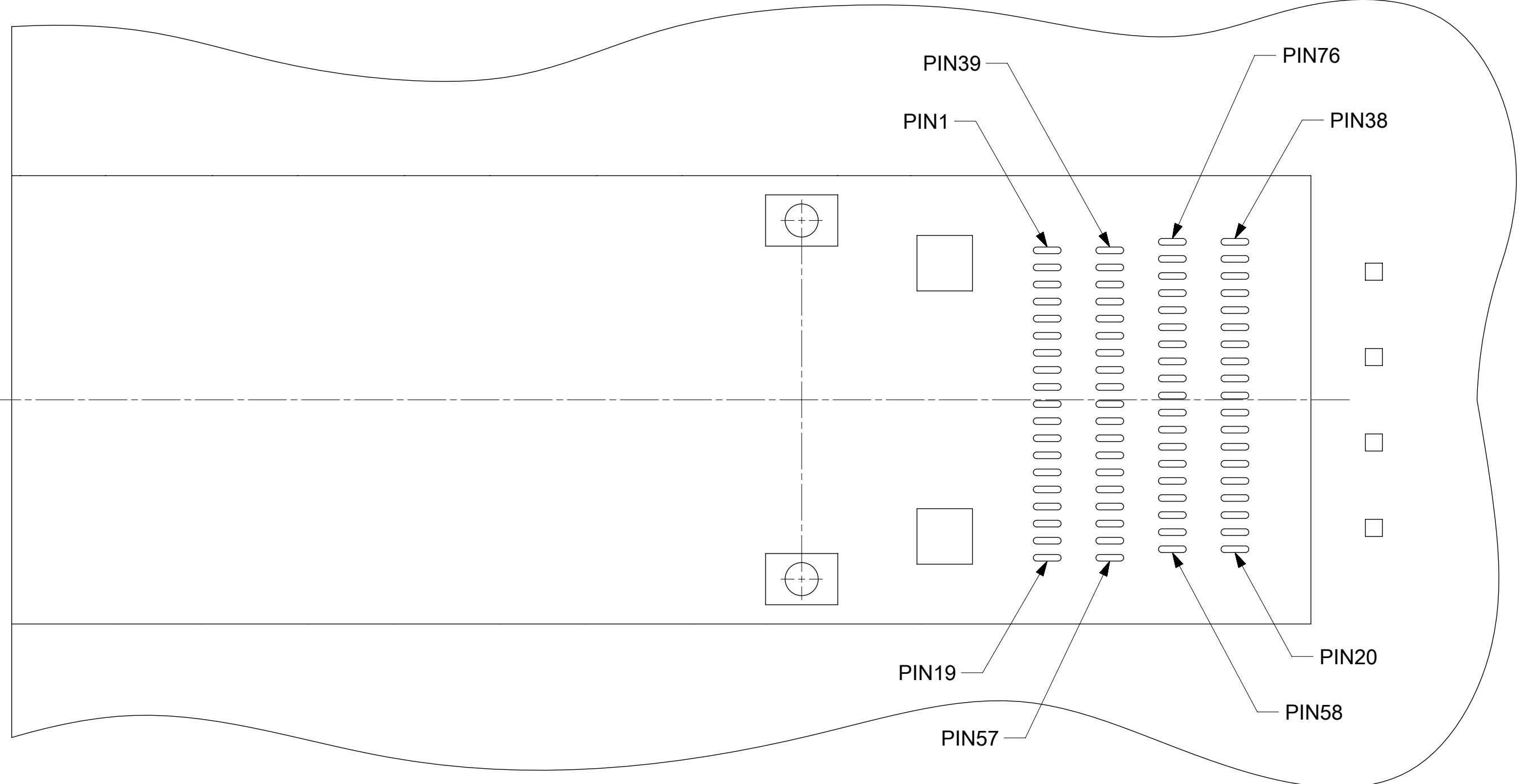
ASSEMBLY 112G DDQ SMT CONNECTOR 76CKT

PRODUCT CUSTOMER DRAWING


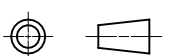
DOCUMENT NUMBER	DOC TYPE	DOC PART	REVISION
2147334000	PSD	000	A2

PIN OUT TABLE

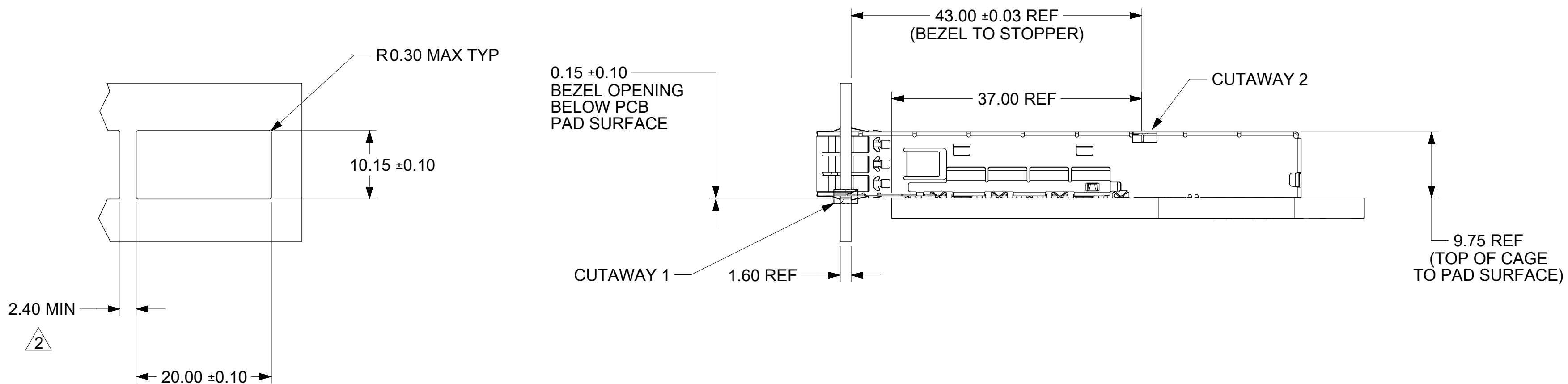
PIN #	Symbol	Description	Notes
1	GND	Ground	
2	TX2n	Transmitter Inverted Data Input	
3	TX2p	Transmitter Non-Inverted Data Input	
4	GND	Ground	
5	TX4n	Transmitter Inverted Data Input	
6	TX4p	Transmitter Non-Inverted Data Input	
7	GND	Ground	
8	ModSelL	Module Select	
9	ResetL	Module Reset	
10	VCC RX	+3.3V Power Supply Receiver	
11	SCL	2-wire serial interface clock	
12	SDA	2-wire serial interface data	
13	GND	Ground	
14	RX3p	Receiver Non-Inverted Data Output	
15	RX3n	Receiver Inverted Data Output	
16	GND	Ground	
17	RX1p	Receiver Non-Inverted Data Output	
18	RX1n	Receiver Inverted Data Output	
19	GND	Ground	
20	GND	Ground	
21	RX2n	Receiver Inverted Data Output	
22	RX2p	Receiver Non-Inverted Data Output	
23	GND	Ground	
24	RX4n	Receiver Inverted Data Output	
25	RX4p	Receiver Non-Inverted Data Output	
26	GND	Ground	
27	ModPrsL	Module Present	
28	IntL	Interrupt	
29	VCC TX	+3.3V Power supply transmitter	
30	VCC1	+3.3V Power supply	
31	LPMode	Low Power Mode	
32	GND	Ground	
33	TX3p	Transmitter Non-Inverted Data Input	
34	TX3n	Transmitter Inverted Data Input	
35	GND	Ground	
36	TX1p	Transmitter Non-Inverted Data Input	
37	TX1n	Transmitter Inverted Data Input	
38	GND	Ground	
39	GND	Ground	
40	TX6n	Transmitter Inverted Data Input	
41	TX6p	Transmitter Non-Inverted Data Input	
42	GND	Ground	
43	TX8n	Transmitter Inverted Data Input	
44	TX8p	Transmitter Non-Inverted Data Input	
45	GND	Ground	
46	P/VS4	PROGRAMMABLE/MODULE VENDOR SPECIFIC 4	
47	P/VS1	PROGRAMMABLE/MODULE VENDOR SPECIFIC 1	
48	VCC	+3.3V Power supply	
49	P/VS2	PROGRAMMABLE/MODULE VENDOR SPECIFIC 2	
50	P/VS3	PROGRAMMABLE/MODULE VENDOR SPECIFIC 3	
51	GND	Ground	
52	RX7p	Receiver Non-Inverted Data Output	
53	RX7n	Receiver Inverted Data Output	
54	GND	Ground	
55	RX5p	Receiver Non-Inverted Data Output	
56	RX5n	Receiver Inverted Data Output	
57	GND	Ground	
58	GND	Ground	
59	RX6n	Receiver Inverted Data Output	
60	RX6p	Receiver Non-Inverted Data Output	
61	GND	Ground	
62	RX8n	Receiver Inverted Data Output	
63	RX8p	Receiver Non-Inverted Data Output	
64	GND	Ground	
65	NC	No Connect	
66	Reserved	For future use	
67	VCC	+3.3V Power supply	
68	VCC	+3.3V Power supply	
69	ePPS/CLOCK	1 PPS PTP clock or reference clock input	
70	GND	Ground	
71	TX7p	Transmitter Non-Inverted Data Input	
72	TX7n	Transmitter Inverted Data Input	
73	GND	Ground	
74	TX5p	Transmitter Non-Inverted Data Input	
75	TX5n	Transmitter Inverted Data Input	
76	GND	Ground	



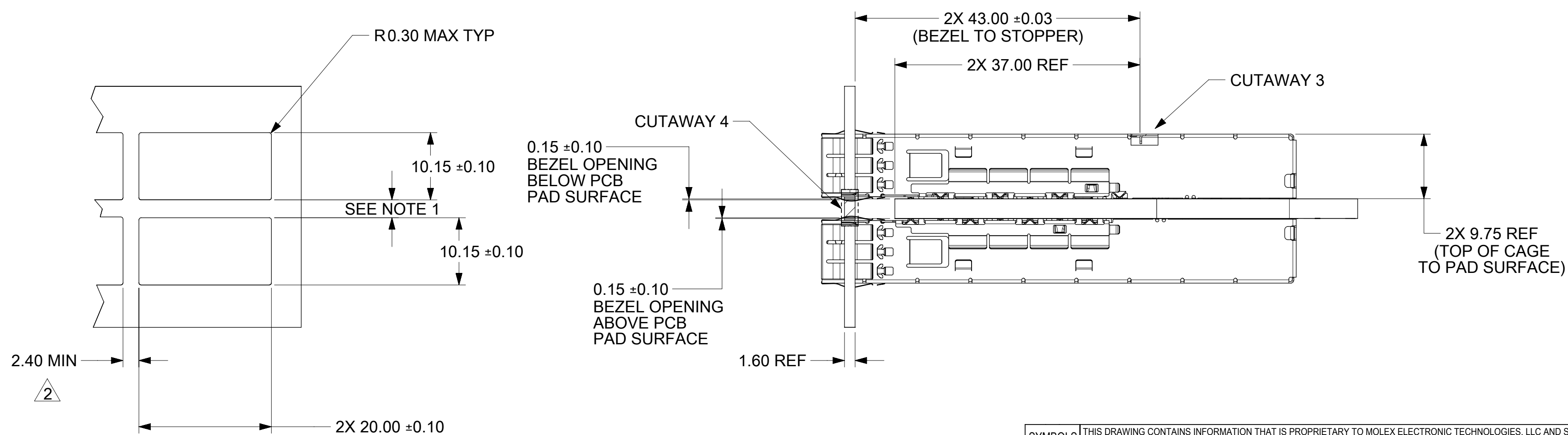
Notes:
 * Reference only.
 ** Please align QSFP-DD MSA for pin mapping

SYMBOLS										THIS DRAWING CONTAINS INFORMATION THAT IS PROPRIETARY TO MOLEX ELECTRONIC TECHNOLOGIES, LLC AND SHOULD NOT BE USED WITHOUT WRITTEN PERMISSION											
DIMENSION UNITS		SCALE		CURRENT REV DESC:																	
mm		5:1		EC NO: 713013														ASSEMBLY 112G DDQ SMT CONNECTOR 76CKT			
GENERAL TOLERANCES (UNLESS SPECIFIED)		DRWN: RCHEN55 2021/07/15										DOCUMENT NUMBER				DOC TYPE		DOC PART		REVISION	
ANGULAR TOL ± 1.0°		CHK'D: JKACHLIC 2022/07/28										2147334000				PSD		000		A2	
4 PLACES ±		APPR: JKACHLIC 2022/07/28										PRODUCT CUSTOMER DRAWING									
2 PLACES ± 0.13		INITIAL REVISION:										MATERIAL NUMBER				CUSTOMER		SHEET NUMBER			
1 PLACE ± 0.25		DRWN: LZHUANG06 2020/03/16										2147334000						3 OF 5			
0 PLACES ±		APPR: IGORH 2021/05/10																			
DRAFT WHERE APPLICABLE MUST REMAIN WITHIN DIMENSIONS		THIRD ANGLE PROJECTION		DRAWING		SERIES		MATERIAL NUMBER		CUSTOMER		SHEET NUMBER									
				C-SIZE		214733		2147334000													

BEZEL AND BOARD POSITION DIMENSIONS FOR SINGLE SIDE MOUNTING



BEZEL AND BOARD POSITION DIMENSIONS FOR BELLY TO BELLY MOUNTING



- NOTES:
- PCB THICKNESS VARIATION MUST BE CONSIDERED WHEN DETERMINING BEZEL OPENING, SIZE, AND LOCATION.
 - THIS DIMENSION IS FOR REFERENCE ONLY, USER CAN MODIFY DEPENDING ON APPLICATION, OPENING FOR ADJACENT CAGE ON PCB LAYOUT VARIES BASED ON MODIFICATION.

THIS DRAWING CONTAINS INFORMATION THAT IS PROPRIETARY TO MOLEX ELECTRONIC TECHNOLOGIES, LLC AND SHOULD NOT BE USED WITHOUT WRITTEN PERMISSION									
SYMBOLS	DIMENSION UNITS	SCALE	CURRENT REV DESC:						
▽ = 0	mm	4:1	EC NO: 713013 DRWN: RCHEN55 2021/07/15 CHK'D: JKACHLIC 2022/07/28 APPR: JKACHLIC 2022/07/28 INITIAL REVISION: DRWN: LZHUANG06 2020/03/16 APPR: IGORH 2021/05/10						
▽ = 0	GENERAL TOLERANCES (UNLESS SPECIFIED)								
▽ = 0	ANGULAR TOL ± 1.0°								
▽ = 0	4 PLACES	±	PRODUCT CUSTOMER DRAWING DOCUMENT NUMBER: 2147334000 DOC TYPE: PSD DOC PART: 000 REVISION: A2						
▽ = 0	3 PLACES	±							
▽ = 0	2 PLACES	± 0.13	MATERIAL NUMBER: 2147334000 CUSTOMER:						
▽ = 0	1 PLACE	± 0.25							
▽ = 0	0 PLACES	±	SHEET NUMBER: 4 OF 5						
▽ = 0	DRAFT WHERE APPLICABLE MUST REMAIN WITHIN DIMENSIONS								
▽ = 0	THIRD ANGLE PROJECTION		DRAWING: C-SIZE		SERIES: 214733		MATERIAL NUMBER: 2147334000		

molex

ASSEMBLY 112G DDQ SMT CONNECTOR 76CKT

PRODUCT CUSTOMER DRAWING


2147334000

PSD 000 A2

2147334000

4 OF 5

REVISION	DATE	DISCRIPTION
1	2019/09/25	INITIAL CONCEPT
2	2020/03/16	OUTLINE UPDATE & MISC CHANGES
3	2020/06/25	SHEET 2: DIM 1.30 WAS 1.60; DIM 0.31 WAS 0.35
4	2020/12/01	MISC. UPDATE
5	2020/12/23	ADDED ADDITIONAL ADHESIVE ZONE FOR BELLY-TO-BELLY APPLICATION
6	2021/1/5	ADDED PICK & PLACE TAPE
7	2021/1/29	CHANGED HOUSING
A	2021/2/1	MISC UPDATE
A2	2021/7/15	SHEET 2, E2: ADD DIM 1.00+/-0.05 FROM PILOT TO PAD. SHEET 2, F4: REMOVE DIM 0.20. SHEET 2, E3: REMOVE DIM 0.13 SHEET 2, G12: REMOVE CAGE LAYOUT DIMENSIONS. SHEET 2, B5: ADD REFERENCE FILE OF CAGE HOLES LOCATION DIMENISONS . SHEET 2, A9 AND D8: DEFINE KEEP OUT ZONE FOR SOLDERING RING AND ADHESIVE ZONE. SHEET 2: CHANGE ADHESIVE LOCATIONS TO TWO AREAS. UPDATE ADHESIVE PAD DIM FROM 4X4 MM TO 2.6X2.6 MM. SHEET 5: SHOW EMI FEATURES IN VIEWS. SHEET 1: C9: REMOVE TP OF PEGS SHEET 1: E9 AND E5: ADD ANOTHER STEP ON HOUSING WITH DIM CONTROL: DIM 7.20 REF AND DIM 19.46 REF SHEET 3: ADD DIFINATION FOR TBD COLUMUS IN PIN OUT TABLE SHEET 2: D7: CHANGE DESCRIPTION OF ADHESIVE AREA BY ADDING "WITH SOLDER MASK"

SYMBOLS										THIS DRAWING CONTAINS INFORMATION THAT IS PROPRIETARY TO MOLEX ELECTRONIC TECHNOLOGIES, LLC AND SHOULD NOT BE USED WITHOUT WRITTEN PERMISSION									
DIMENSION UNITS		SCALE		CURRENT REV DESC:															
mm		1:1		EC NO: 713013 DRWN: RCHEN55 2021/07/15 CHK'D: JKACHLIC 2022/07/28 APPR: JKACHLIC 2022/07/28															
GENERAL TOLERANCES (UNLESS SPECIFIED)		ANGULAR TOL ± 1.0° 4 PLACES ± 3 PLACES ± 2 PLACES ± 0.13 1 PLACE ± 0.25 0 PLACES ±										ASSEMBLY 112G DDQ SMT CONNECTOR 76CKT							
DRAFT WHERE APPLICABLE MUST REMAIN WITHIN DIMENSIONS		THIRD ANGLE PROJECTION		DRAWING		SERIES		MATERIAL NUMBER		CUSTOMER		SHEET NUMBER		PRODUCT CUSTOMER DRAWING DOCUMENT NUMBER: 2147334000 DOC TYPE: PSD DOC PART: 000 REVISION: A2 5 OF 5					