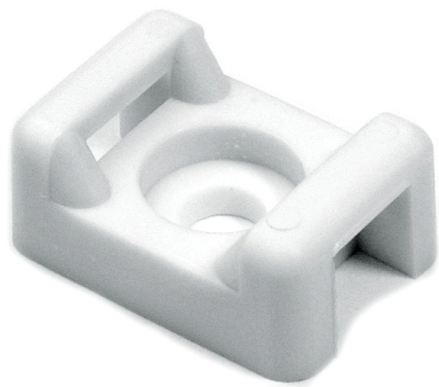


## Specification Sheet

Part Number: CTM210M4



KR/CTM series are designed to provide stability to wire bundles. These mounts can accommodate miniature, intermediate, or standard cross-section cable ties.

Each mount is secured with a single screw.

Cable Tie Anchor Mount, 0.86" x .61", 0.18" Hole Dia, 0.31" Max Tie Width, PA66, White, 1000/pkg

Article Number	151-30506
Type	CTM2
Color	White (WH)
Quantity Per	bag
Product Description	Designed specifically for holding heavier cable bundles these mounting bases can be used in many industries from agriculture to truck manufacture. They offer a very secure fixing and can be used with a wide variety of heavy duty cable ties up to 8.3 mm width.
Short Description	Cable Tie Anchor Mount, 0.86" x .61", 0.18" Hole Dia, 0.31" Max Tie Width, PA66, White, 1000/pkg
Global Part Name	CTM2-PA66-WH

Length L (Imperial)	0.86
Length L (Metric)	21.8
Fixation Method	Screw Mounting and Rivet
Width W (Imperial)	0.61
Width W (Metric)	15.5
Cable Ties	T18 - T120
Height H (Imperial)	.37
Height H (Metric)	9.40
Cable Tie Width Max (Imperial)	0.31
Cable Tie Width Max (Metric)	7.9
Mounting Hole Diameter D (Imperial)	0.18
Mounting Hole Diameter D (Metric)	4.6 mm
Mounting Hole Diameter D Max (Metric)	4.6
Material	Polyamide 6.6 (PA66)

Material Shortcut	PA66
Flammability	UL 94 V-2
UV Resistant (Yes/No)	No
Operating Temperature	-40°F to +185°F (-40°C to +85°C)
Reach Compliant (Article 33)	No
ROHS Compliant	Yes
Certification/Specification	UL 62275
UL Recognized (US)	Yes
UL Recognized (US and Canada)	Yes
Package Quantity (Imperial)	1000
Package Quantity (Metric)	1000
Customs Number	3926909988