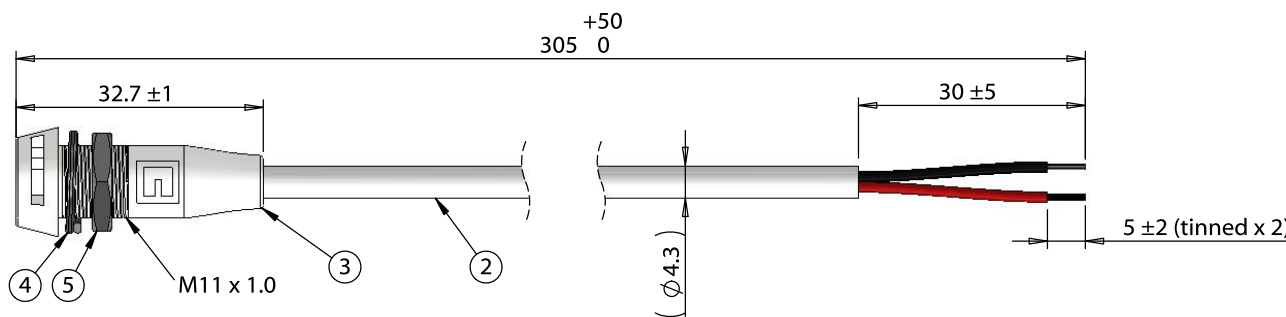
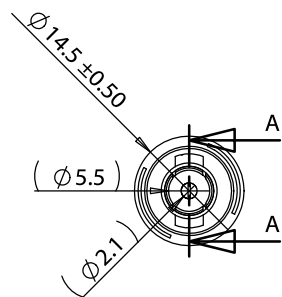
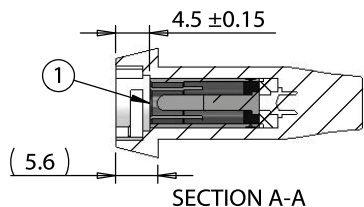
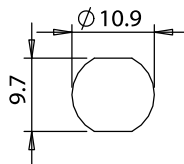


| ITEM NO. | PART NUMBER | DESCRIPTION | QTY. | COMPONENT NOTES |
|----------|-------------|---|------|-----------------|
| 1 | 50-00152 | Connector, dc jack, 5.5x2.1xH6.5xL19.5 mm, molding style | 1 | |
| 2 | 30-00690 | Wire, 2C TS, 22 AWG, UL2464, 300V, 80C, 4.30 mm, VW-1, PVC, white | 1 | |
| 3 | 24-00256 | Overmold, dc jack, 5.5 mm, twist lock panel mount, TIC | 1 | white |
| 4 | 56-00001 | Hardware, washer, lock, 14x11.1x1.1 mm, SPCC, nickel plated | 1 | |
| 5 | 56-00000 | Hardware, nut, hex, 13x2.5 mm, M11x1.0, brass, nickel plated | 1 | |



Installation Details

Panel thickness: 1.5 - 4.5 mm
Recommended Panel cutout:



| Wiring Diagram | |
|----------------|------------|
| 50-00152 | wire color |
| center | red |
| sleeve | black |

Notes:

Designed to mate with cable assembly: 10-02934

Functionally equivalent components may be substituted

| | | | | | |
|-----------|-----------|-----------------|--|---|---|
| Revision: | Date: | Description: | Prepared: | Notes: | <h1>TENSILITY</h1> tel 1.541.323.3228 800 877.670.7118 fax 1.541.323.4202 web tensility.com |
| A | 9/19/2018 | Initial release | JP <small>Digitally signed by JP Date: 2018.09.21 13:57:15 -07'00'</small> | | |
| | | | Verified: | Function test: no open, no short circuit, no intermittent | Size: A |
| | | | AW <small>Digitally signed by AW Date: 2018.09.21 16:08:26 -07'00'</small> | Description: | Part number: 10-02979 |
| | | | Dimensions are in millimeters. Tolerances: X: ± 0.5 mm X.X: ± 0.3 mm X.XX: ± 0.05 mm | Cable, 305 mm, 5.5x2.1 mm 50-00152 dc jack twist lock panel mount to 5 mm tinned, 22 AWG, white | Scale: 1:1 |
| | | | | | Sheet 1 of 1 |

5

4

3

2

1