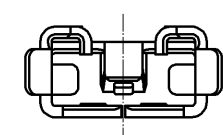
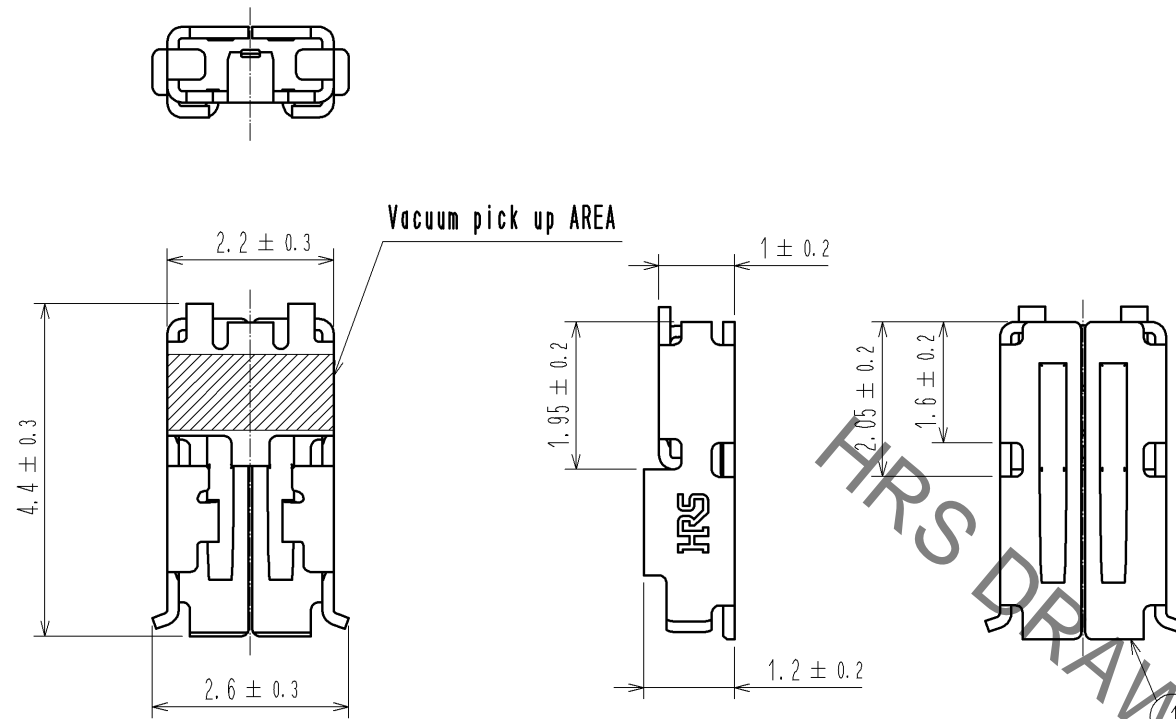
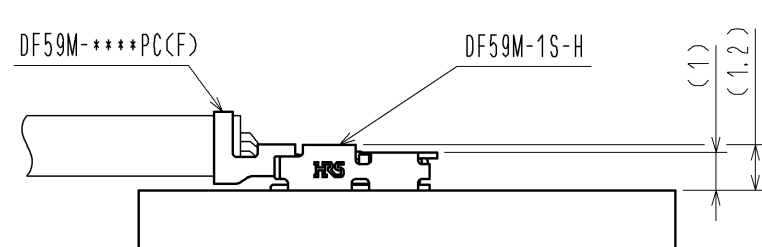
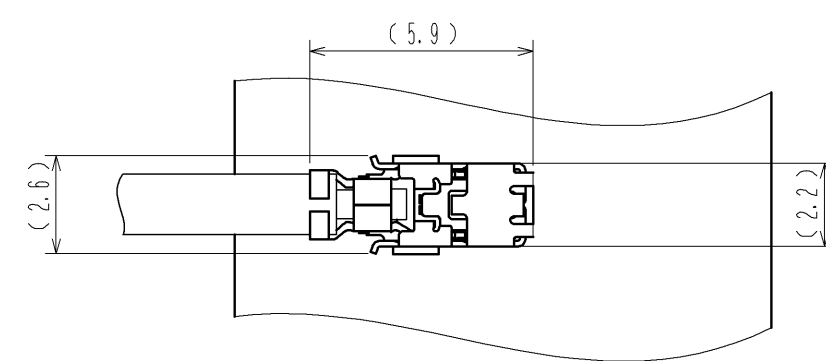


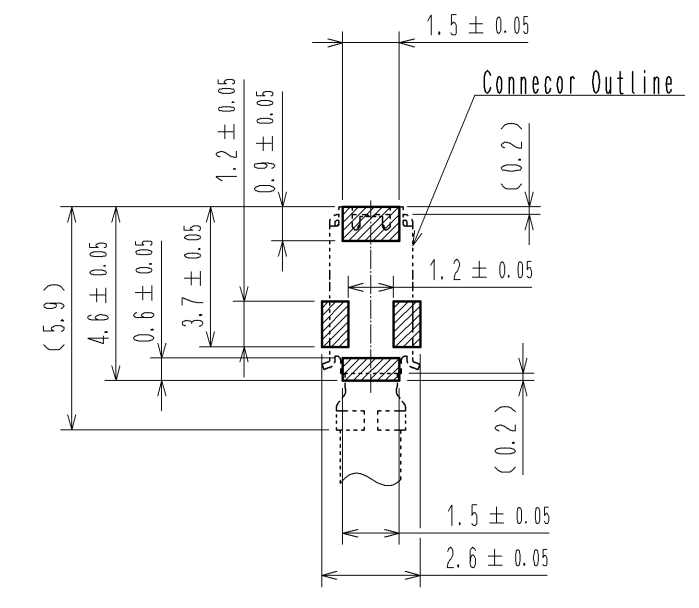
May.1.2023 Copyright 2023 HIROSE ELECTRIC CO., LTD. All Rights Reserved.
In case of consideration for using Automotive equipment / device which demand high reliability, kindly contact our sales window correspondents.



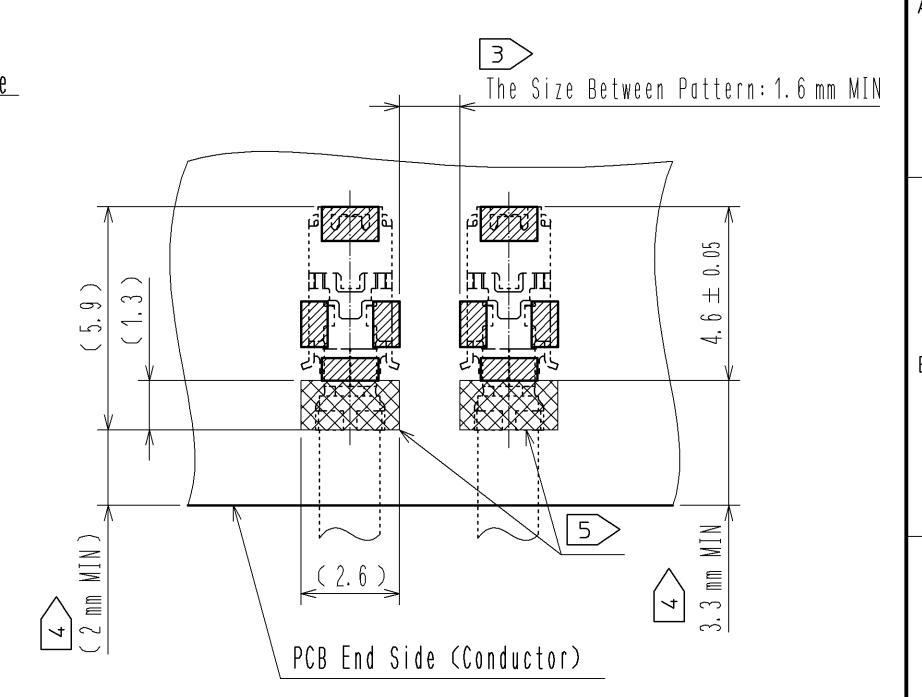
Mating Figure(5:1)



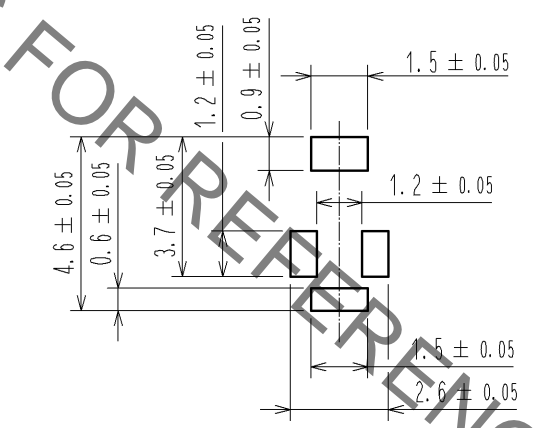
Recommended PCB Layout (5 : 1)



Parallel Arrangement Recommended PCB Layout(5 : 1)



Recommended Metal Mask (5 : 1)
Thickness : 0.1mm



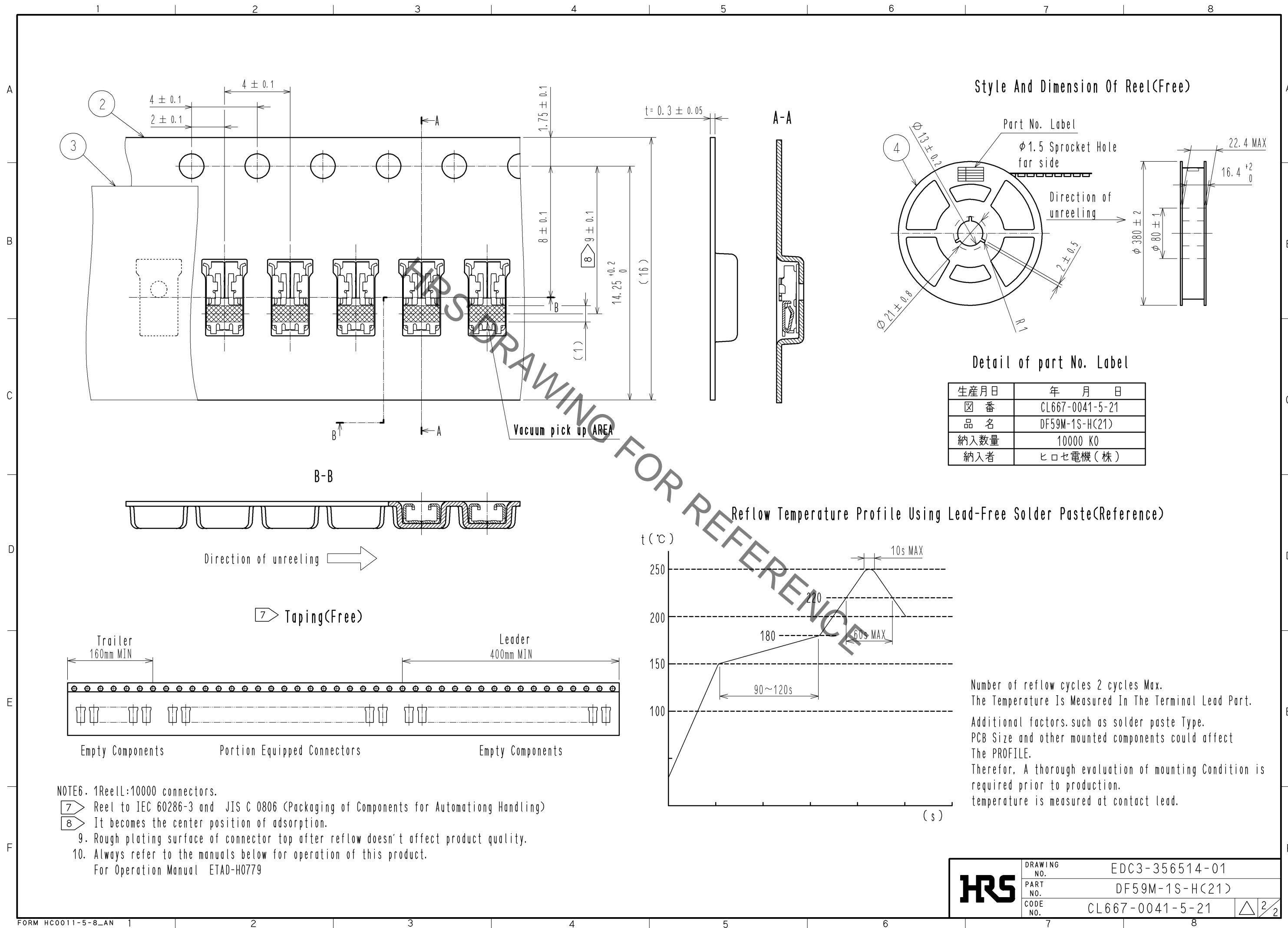
Warning

This product does not have an insulator.
Please do not operate the connector during current-carrying.

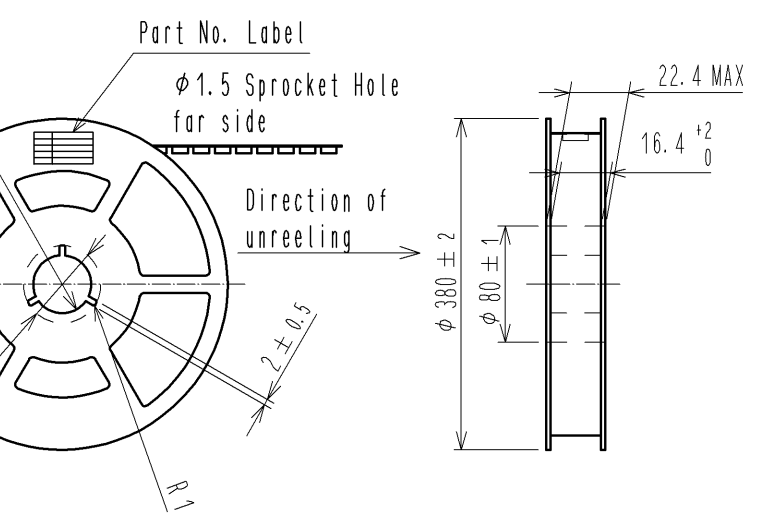
- NOTE 1. lead co-planarity shall be 0.1mm MAX.
2. The Dimensions In Parentheses Are For Reference.
- ③ In accordance with IEC60664 and JIS C 60664, creepage distance of 1.6mm or more is required in 300V of rated voltage. (In pollution degree2 of printed wiring material)
 - ④ Please take +0.4mm longer than the standard of recommended creepage distance for the direction, because the direction is needed consideration of the mating clearance and manufacturing tolerance of crimping.
 - ⑤ Keep the indicated area away from Conductive trace.
When patterning is not avoidable, Conductive trace must be covered by resist film.

| | | | | | | | |
|--------------------------------------|--------------|---|------------|----------------------------|------------------------------|---------|------|
| 1 | Cooper Alloy | SURFACE:TIN-PLATING 1μm MIN. UNDER PLATING:NICKEL 0.5μm MIN. | 4 | PS | REEL, BLACK | | |
| | | | 3 | Polyester | CLEAR(COVER TAPE) | | |
| | | | 2 | PS | CLEAR(EMBOSSED CARRIER TAPE) | | |
| NO. | MATERIAL | FINISH . REMARKS | NO. | MATERIAL | FINISH . REMARKS | | |
| UNITS mm | | SCALE 10 : 1 | COUNT △ | DESCRIPTION OF REVISIONS | DESIGNED | CHECKED | DATE |
| HRS HIROSE ELECTRIC CO., LTD. | | APPROVED : HK. UMEHARA | 14. 05. 20 | DRAWING NO. EDC3-356514-01 | | | |
| | | CHECED : HK. UMEHARA | 14. 05. 20 | PART NO. DF59M-1S-H(21) | | | |
| | | DESIGNED : SZ. ONO | 14. 05. 20 | CODE NO. CL667-0041-5-21 | | | |
| | | DRAWN : SZ. ONO | 14. 05. 20 | △ 1/2 | | | |

May.1.2023 Copyright 2023 HIROSE ELECTRIC CO., LTD. All Rights Reserved.
 In case of consideration for using Automotive equipment / device which demand high reliability, kindly contact our sales window correspondents.



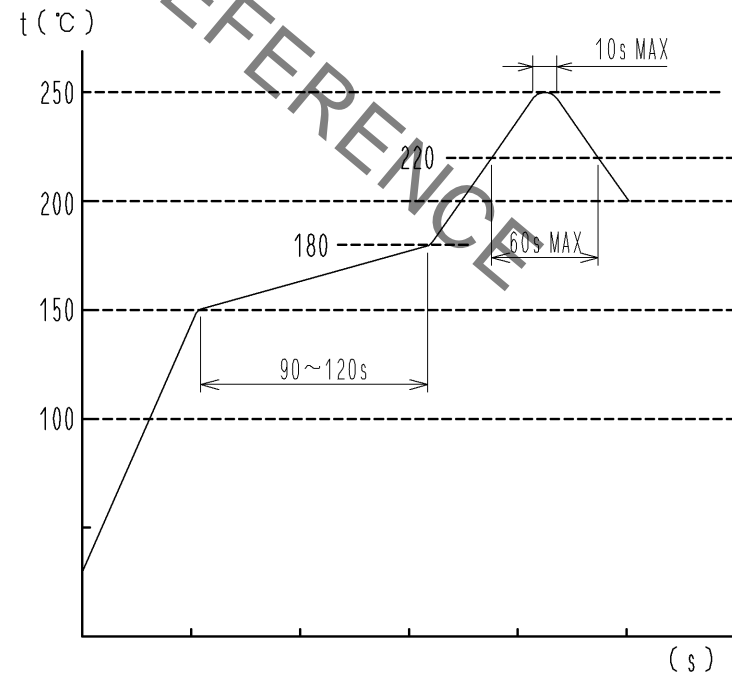
Style And Dimension Of Reel(Free)



Detail of part No. Label

| | |
|------|-----------------|
| 生産月日 | 年 月 日 |
| 図 番 | CL667-0041-5-21 |
| 品 名 | DF59M-1S-H(21) |
| 納入数量 | 10000 KO |
| 納入者 | ヒロセ電機(株) |

Reflow Temperature Profile Using Lead-Free Solder Paste(Reference)



Number of reflow cycles 2 cycles Max.
 The Temperature Is Measured In The Terminal Lead Part.
 Additional factors, such as solder paste Type,
 PCB Size and other mounted components could affect
 The PROFILE.
 Therefore, A thorough evaluation of mounting Condition is
 required prior to production.
 temperature is measured at contact lead.

- NOTE6. 1Reel:10000 connectors.
- 7 Reel to IEC 60286-3 and JIS C 0806 (Packaging of Components for Automating Handling)
 - 8 It becomes the center position of adsorption.
 - 9. Rough plating surface of connector top after reflow doesn't affect product quality.
 - 10. Always refer to the manuals below for operation of this product.
 For Operation Manual ETAD-H0779

| | | |
|------------|-------------|-----------------|
| HRS | DRAWING NO. | EDC3-356514-01 |
| | PART NO. | DF59M-1S-H(21) |
| | CODE NO. | CL667-0041-5-21 |
| | | △ 2/2 |