



**Electrical specifications**

**Center Frequency:** 5777.5 MHz  
**Passband bandwidth:** 20 MHz  
**Insertion loss over PB:** 2 dB@5767-5787 MHz  
**Insertion loss variation:** 6.5 dB over PB  
**Rejection 1:** >60 dBc min@DC-(CF-20) MHz  
**Rejection 2:** >60 dBc min@(CF+20)-6200 MHz  
**Group delay variation:** 200 ns over any 0.5 MHz in PB  
**Power handling:** 1 Watt

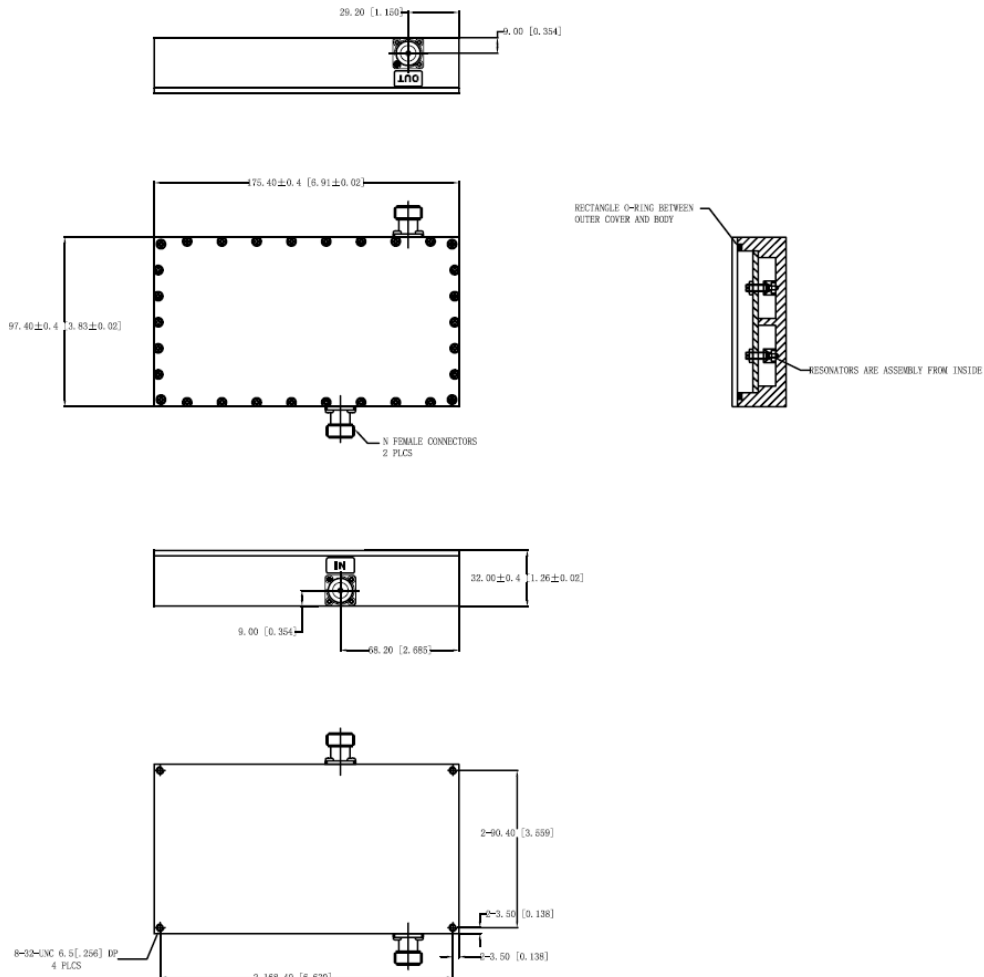
**Mechanical**

**Mounting Method:** Threaded Mounting Holes  
**Connector Type:** N-Type female  
**Dimensions:** 6.93" x 3.86" x 1.26" in

**Environmental**

**Operating Temperature:** -45 to +85° C  
**Storage Temperature:** -55 to +95° C  
**Shock:** 20 G. 11ms  
**Vibration:** 20 G. 5 to 200 MHz

**Outline Drawing:**





Plot:

