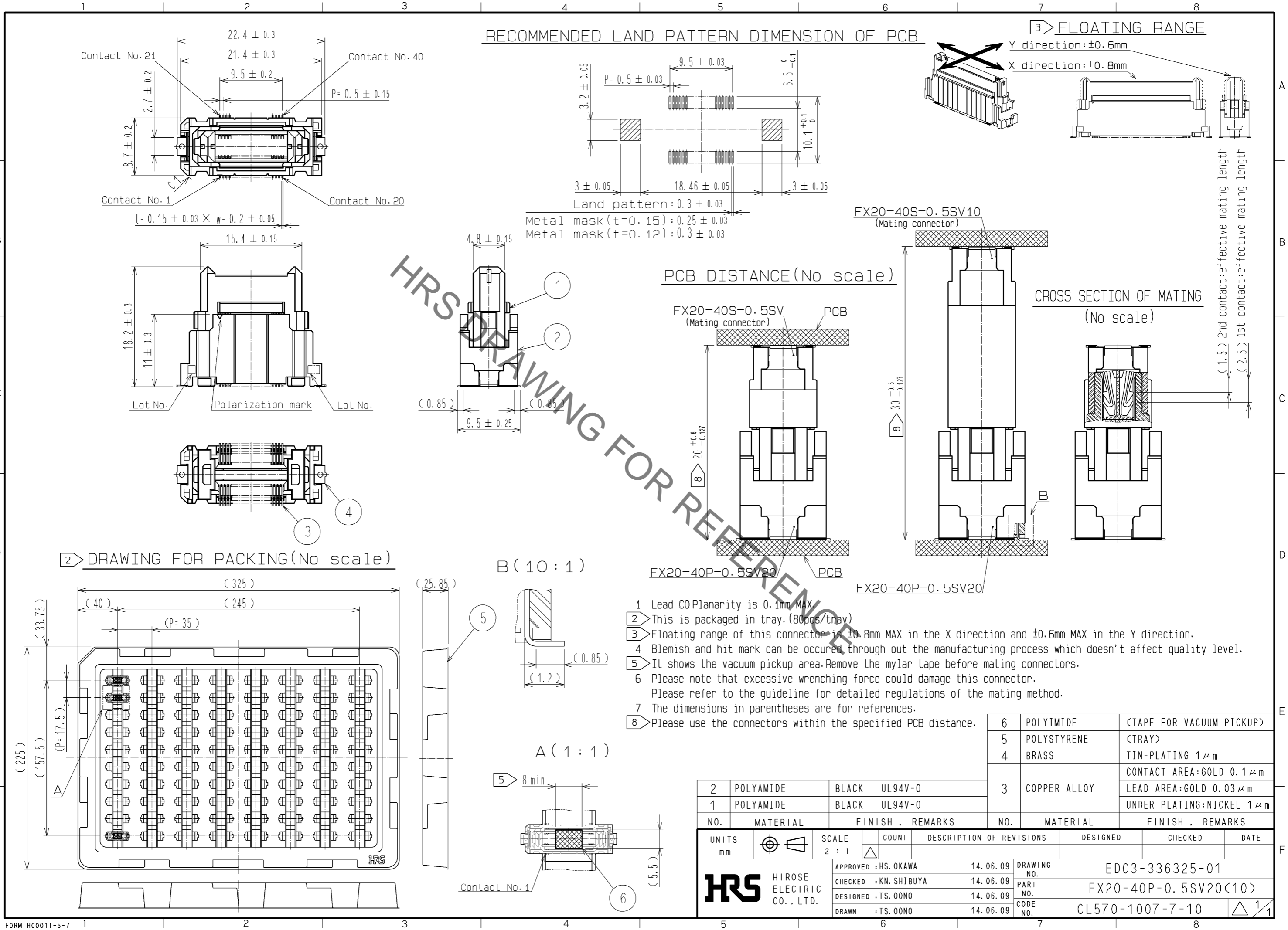


May.1.2023 Copyright 2023 HIROSE ELECTRIC CO., LTD. All Rights Reserved.  
In case of consideration for using Automotive equipment / device which demand high reliability, kindly contact our sales window correspondents.



RECOMMENDED LAND PATTERN DIMENSION OF PCB

FLOATING RANGE

Y direction: ±0.6mm  
X direction: ±0.8mm

Land pattern: 0.3 ± 0.03  
Metal mask (t=0.15): 0.25 ± 0.03  
Metal mask (t=0.12): 0.3 ± 0.03

PCB DISTANCE (No scale)

CROSS SECTION OF MATING (No scale)

DRAWING FOR PACKING (No scale)

B (10 : 1)

A (1 : 1)

- 1 Lead CO-Planarity is 0.1mm MAX
- 2 This is packaged in tray. (80pcs/tray)
- 3 Floating range of this connector is ±0.8mm MAX in the X direction and ±0.6mm MAX in the Y direction.
- 4 Blemish and hit mark can be occurred through out the manufacturing process which doesn't affect quality level.
- 5 It shows the vacuum pickup area. Remove the mylar tape before mating connectors.
- 6 Please note that excessive wrenching force could damage this connector. Please refer to the guideline for detailed regulations of the mating method.
- 7 The dimensions in parentheses are for references.
- 8 Please use the connectors within the specified PCB distance.

NO.	MATERIAL	FINISH	REMARKS	NO.	MATERIAL	FINISH	REMARKS
2	POLYAMIDE	BLACK	UL94V-0	6	POLYIMIDE		(TAPE FOR VACUUM PICKUP)
1	POLYAMIDE	BLACK	UL94V-0	5	POLYSTYRENE		(TRAY)
				4	BRASS		TIN-PLATING 1 μm
				3	COPPER ALLOY		CONTACT AREA: GOLD 0.1 μm
							LEAD AREA: GOLD 0.03 μm
							UNDER PLATING: NICKEL 1 μm
UNITS	mm			SCALE	2 : 1		
COUNT		DESCRIPTION OF REVISIONS		DESIGNED	CHECKED		
APPROVED : HS. OKAWA		14.06.09		DRAWING NO. EDC3-336325-01			
CHECKED : KN. SHIBUYA		14.06.09		PART NO. FX20-40P-0.5SV20(10)			
DESIGNED : TS. OONO		14.06.09		CODE NO. CL570-1007-7-10			
DRAWN : TS. OONO		14.06.09		DATE			