

Three-wire installation terminal, Screw connection, Mounting type: Mounting rail TS 35/7.5, Rated cross-section: 2.5 mm<sup>2</sup>, Width: 18 mm, Colour: Beige

### Business data

|  |                                   |
|--|-----------------------------------|
| Article number                             | 1446.2                            |
| Article name                               | DLIS 2,5 B-W BG                   |
| GTIN (EAN)                                 | 4044211044954                     |
| Packaging unit                             | 16                                |
| Quantity unit                              | PC                                |
| Weight per piece (not including packaging) | 76 g                              |
| Weight per piece (including packaging)     | 80.43 g                           |
| Unit of weight                             | G                                 |
| Customs number                             | 85369010                          |
| Country of origin                          | CZ                                |
| Product description                        | Three-wire installation terminals |
| Colour                                     | Beige                             |

---

### Technical data

---

#### Dimensions

|                  |         |
|------------------|---------|
| Length           | 90.5 mm |
| Width            | 18 mm   |
| Height TS 35/7.5 | 53 mm   |

#### Ratings

|   |                     |
|---|---------------------|
| Rated voltage                                   | 400 V               |
| Rated current                                   | 24 A                |
| Rated cross-section                             | 2.5 mm <sup>2</sup> |
| Rated impulse voltage                           | 4 kV                |
| Overvoltage category                            | III                 |
| Contamination degree                            | 3                   |
| Maximum power dissipation for nominal condition | 4.61 W              |

### Technical data

#### Connection data

|   |                     |
|---|---------------------|
| Connection principle                                    | Screw connection    |
| Connection position                                     | Lateral             |
| Connections   | 12                  |
| Number of potentials                                    | 9                   |
| Special connection                                      | Busbar 10 x 3 mm    |
| Wire cross-section single-core (rigid) / stranded, min. | 0.2 mm <sup>2</sup> |
| Wire cross-section single core (rigid)/stranded, max.   | 4 mm <sup>2</sup>   |
| Wire cross-section stranded, min.                       | 0.2 mm <sup>2</sup> |
| Wire cross-section stranded, max.                       | 4 mm <sup>2</sup>   |
| Wire cross-section stranded with wire-end ferrules,min. | 0.2 mm <sup>2</sup> |
| Wire cross-section stranded with wire-end ferrules,max. | 2.5 mm <sup>2</sup> |
| Wire cross-section AWG, min.                            | 22                  |
| Wire cross-section AWG, max.                            | 14                  |
| Stripping length  | 8 mm                |
| Screw head  | Slotted             |
| Screw threading   | M 2,5               |
| Tightening torque, min.                                 | 0.4 Nm              |
| Tightening torque, max.                                 | 0.8 Nm              |
| N-function possible                                     | ✓                   |
| PE function is possible                                 | ✓                   |
| N partition slides available                            | ✓                   |

#### Materials

|                           |               |
|---------------------------|---------------|
| Insulation housing        | Polyamide 6.6 |
| Flammability class UL 94  | V-2           |
| Working temperature, min. | -40 °C        |
| Working temperature, max. | 105 °C        |

#### Further technical data

|                                |                         |
|--------------------------------|-------------------------|
| Mounting type                  | Mounting rail TS 35/7,5 |
| Gauge plug acc. to EN 60 947-1 | A3                      |
| End plate required             | ✓                       |

---

### Technical data

---

#### Environmental Product Compliance

---

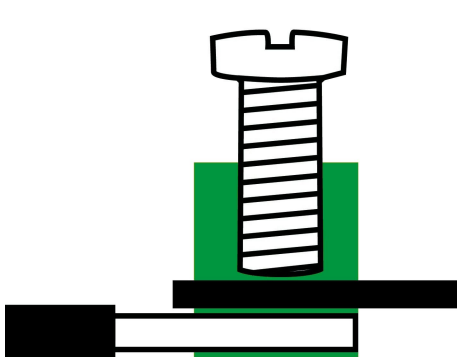
|                                |            |
|--------------------------------|------------|
| REACH Conform                  | yes        |
| REACH Reference date           | 2023-01-17 |
| REACH Candidate Substance Note | No         |
| RoHS Conform                   | yes        |

---

---

### Media

---



**M2.5**



### Accessories

#### End plate

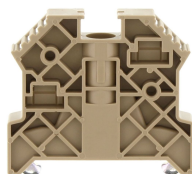
End plate, Width: 1.5 mm, Colour: Beige



| Article number | Article name | GTIN (EAN)    | Packaging unit |
|----------------|--------------|---------------|----------------|
| <u>2829.2</u>  | AP 2,5/S BG  | 4044211055554 | 20 ST          |

#### End stop

End stop, Mounting type: Mounting rail TS 35/7.5, Width: 9.5 mm, Colour: Beige



| Article number | Article name  | GTIN (EAN)    | Packaging unit |
|----------------|---------------|---------------|----------------|
| <u>2828.0</u>  | ES 35/K/ST BG | 4044211055547 | 50             |

#### Fixing plate

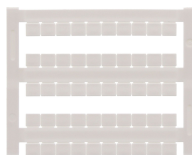
Retaining plate, Width: 1.5 mm, Colour: Blue



| Article number | Article name | GTIN (EAN)    | Packaging unit |
|----------------|--------------|---------------|----------------|
| <u>2890.5</u>  | HP DLIS BU   | 4044211056155 | 20 ST          |

#### Quick marking

Terminal marker / Pocket Maxicard, Length: 5 mm, Width: 6 mm, Colour: White



| Article number | Article name   | GTIN (EAN)    | Packaging unit |
|----------------|----------------|---------------|----------------|
| <u>4702.7</u>  | PMC SB 6/50 WH | 4044211089986 | 500 ST         |

### Neutral busbar



Busbar, Material: Copper, Colour: natural

| Article number | Article name | GTIN (EAN)    | Packaging unit |
|----------------|--------------|---------------|----------------|
| <u>2129.0</u>  | Ssch 10x3 CU | 4044211049485 | 1 M            |

### Screwdriver



Screwdriver with bare blade, Colour: Black-grey

| Article number | Article name | GTIN (EAN)    | Packaging unit |
|----------------|--------------|---------------|----------------|
| <u>1085.0</u>  | SDB 0,5x3,0  | 4044211014643 | 1 ST           |