



Cover, Length: 59 mm, Width: 15 mm, Colour: Yellow

RAL: 1026

Business data

Article number	2804.0
Article name	AD 1/95/B YE
GTIN (EAN)	4044211055356
Packaging unit	20
Quantity unit	PC
Weight per piece (not including packaging)	1.6 g
Weight per piece (including packaging)	1.61 g
Unit of weight	G
Customs number	85389099
Country of origin	DE
Product description	Cover
Colour	Yellow

Technical data

Dimensions

Length	59 mm
--------	-------

Width	15 mm
-------	-------

Materials

Material	Polyamide 6.6
----------	---------------

Flammability class UL 94	V-2
--------------------------	-----

Working temperature, min.	-40 °C
---------------------------	--------

Working temperature, max.	105 °C
---------------------------	--------

Environmental Product Compliance

REACH Conform	yes
---------------	-----

REACH Reference date	2023-01-17
----------------------	------------

REACH Candidate Substance Note	No
--------------------------------	----

RoHS Conform	yes
--------------	-----

Media

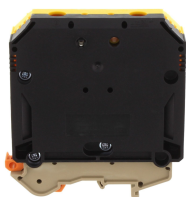
Accessories

##INVERSE##CONTA-CONNECT



Feed-through terminal, Screw connection, Mounting type: Mounting rail TS 35/7.5 and TS 32, Rated cross-section: 95 mm², Width: 25 mm, Colour: Beige

Article number	Article name	GTIN (EAN)	Packaging unit
1122.2	RK 95 BG	4044211018979	10



Feed-through terminal, Screw connection, Mounting type: Mounting rail TS 35/7.5 and TS 32, Rated cross-section: 95 mm², Width: 25 mm, Colour: Black-yellow

Article number	Article name	GTIN (EAN)	Packaging unit
1568.2	RK 95/PE BKYE	4044211047399	10 ST



Feed-through terminal for direct mount, Screw connection, Mounting type: Mounting surface, Rated cross-section: 95 mm², Width: 25 mm, Colour: Beige

Article number	Article name	GTIN (EAN)	Packaging unit
1583.2	RK 95-D BG	4044211047726	10



Ex feed-through terminal ATEX-certified, Screw connection, Mounting type: Mounting rail TS 35/7.5 and TS 32, Rated cross-section: 95 mm², Width: 25 mm, Colour: Beige

Article number	Article name	GTIN (EAN)	Packaging unit
1476.2	RK 95 Ex BG	4044211107918	10