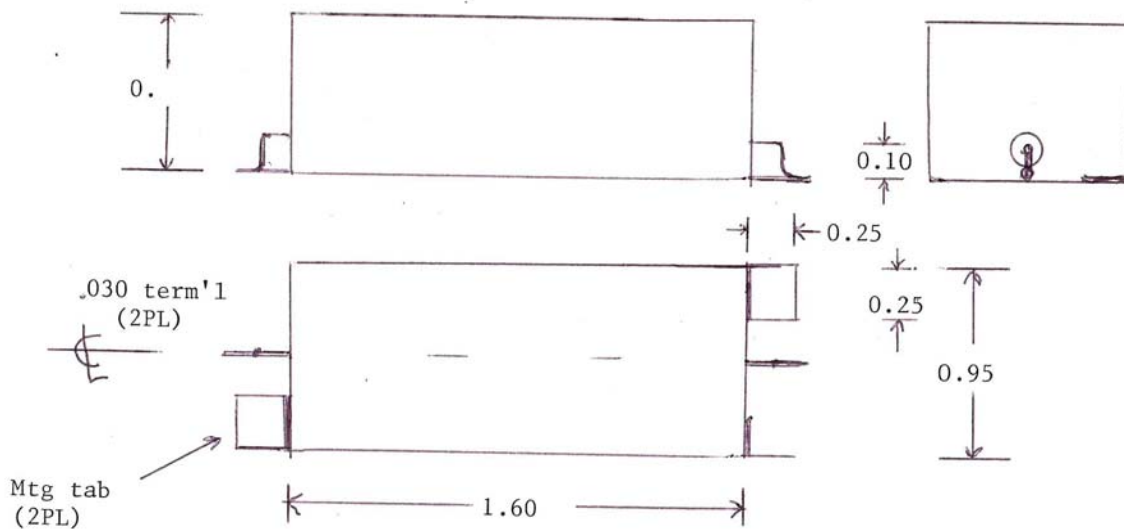




44 MHz Crystal Bandpass Filter

Part Number: AM44CR289

Center Frequency: 44 MHz
6 dB Bandwidth (BW): 100 KHz min, 140 KHz max
20 dB min up to CF +/- 45 MHz
Insertion Loss: 10 dB max
20 dB min at 43.86 MHz & 44.14 MHz
Return Loss over CF +/- 45 KHz = 15 dB min
Power Handling: 20 dBm max
Temperature Ambient: -10°C to +70°C





ANATECH ELECTRONICS, INC.
Manufacturer of RF & Microwave Products



44 MHz Crystal Bandpass Filter

Part Number: AM44CR289

