

NOTES:

1. PRESS FIT LEGS, 0.090 INCHES LONG.
1.57 [0.062] MINIMUM PCB THICKNESS.
2. SINGLE SIDED BOARD THICKNESS
NOMINAL: 1.60 [0.062"]
MINIMUM: 1.44 [0.057"]
BELLY TO BELLY BOARD THICKNESS
NOMINAL: 2.30 [0.090"]
MINIMUM: 2.07 [0.081"]
3. CAN BE USED WITH THE FOLLOWING LIGHT PIPE NUMBERS:

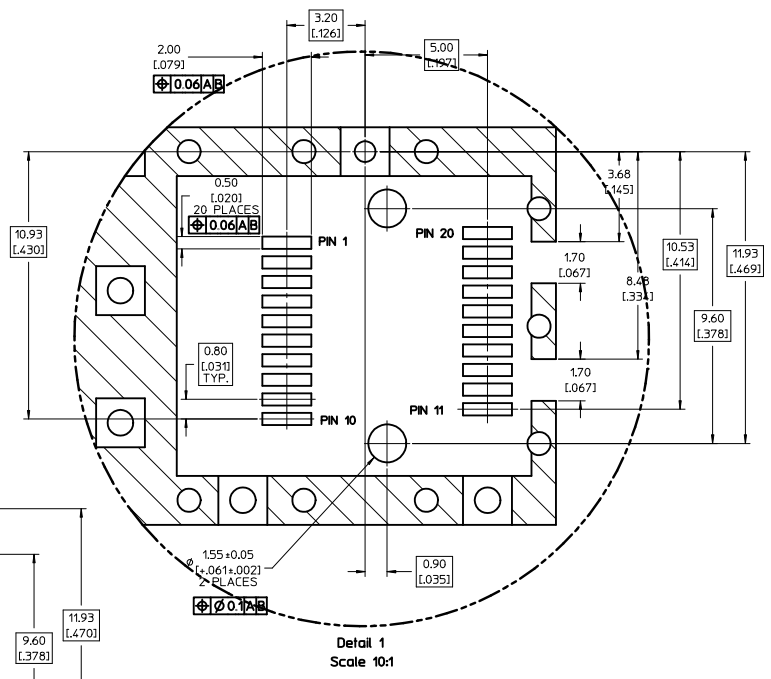
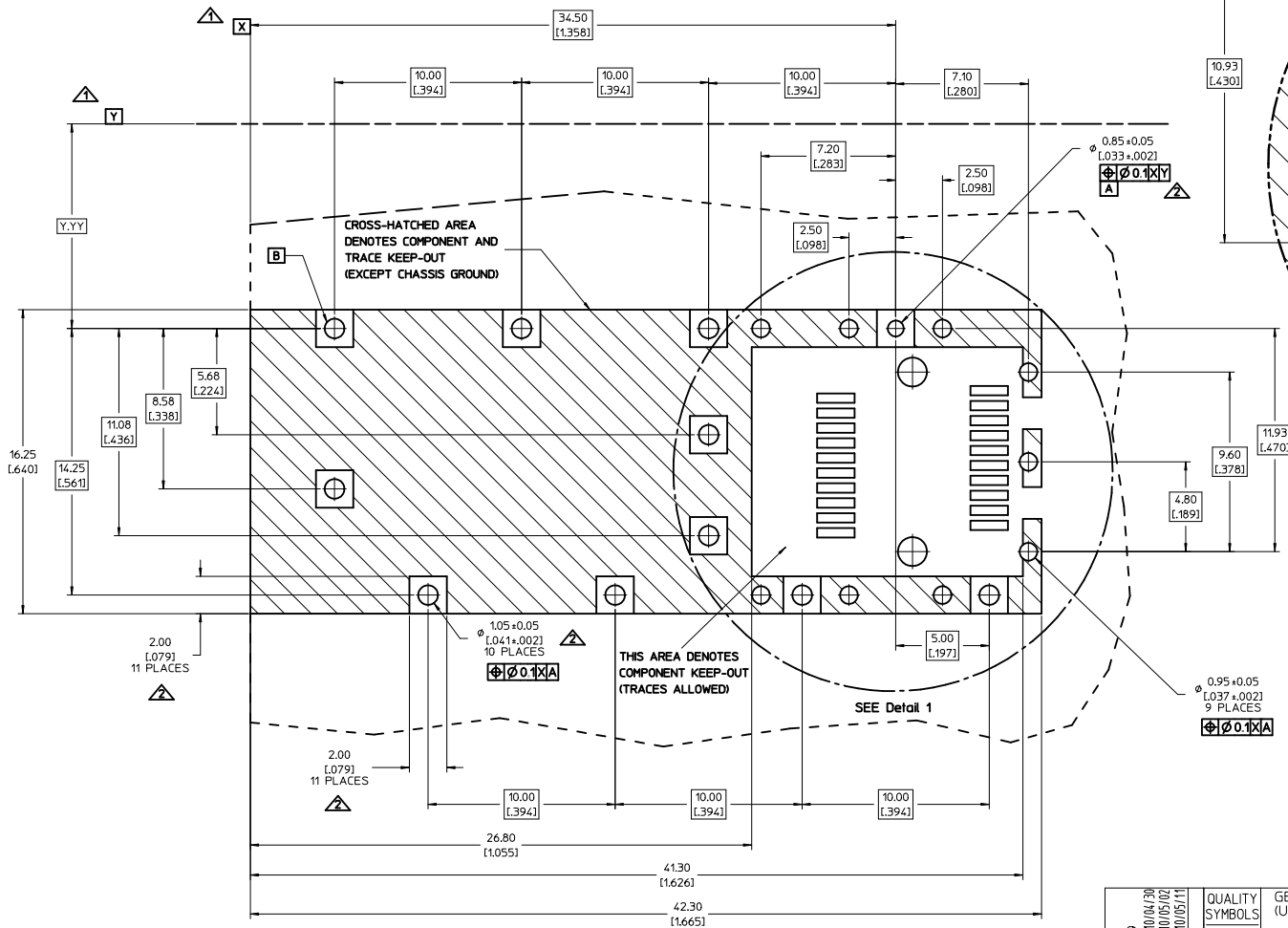
747260001 - LIGHT PIPE FROM BACK TO TOP
(REFER TO DOCUMENT SD-74726-001)

747260002 - LIGHT PIPE FROM SIDE TO TOP
(REFER TO DOCUMENT SD-74726-002)
4. MATERIAL: COPPER ALLOY
PLATING: PRE-PLATED WITH NICKEL
5. THIS PART MEETS THE RESTRICTION OF HAZARDOUS SUBSTANCES IN ELECTRICAL AND ELECTRONIC EQUIPMENT (RoHS) DIRECTIVE (2002/95/EC).

INITIAL RELEASE IEC NO. USY2010-0519 DRAWN BY: MCKERVEY 2010/04/30 CHECKED BY: CHYDARI INKE 2010/05/02 APPROVED BY: KJANOTA 2010/05/11	QUALITY SYMBOLS	GENERAL TOLERANCES (UNLESS SPECIFIED)	DIMENSION STYLE	SCALE	DESIGN UNITS	THIRD ANGLE PROJECTION																		
	$\nabla=0$ $\nabla=0$	<table border="1"> <tr> <th></th> <th>mm</th> <th>INCH</th> </tr> <tr> <td>4 PLACES</td> <td>±---</td> <td>±---</td> </tr> <tr> <td>3 PLACES</td> <td>±---</td> <td>±.005</td> </tr> <tr> <td>2 PLACES</td> <td>±0.13</td> <td>±.01</td> </tr> <tr> <td>1 PLACE</td> <td>±0.25</td> <td>±---</td> </tr> <tr> <td colspan="3">ANGULAR ± 1°</td> </tr> </table>		mm	INCH	4 PLACES	±---	±---	3 PLACES	±---	±.005	2 PLACES	±0.13	±.01	1 PLACE	±0.25	±---	ANGULAR ± 1°			MM/IN	5:1	METRIC	
		mm	INCH																					
	4 PLACES	±---	±---																					
3 PLACES	±---	±.005																						
2 PLACES	±0.13	±.01																						
1 PLACE	±0.25	±---																						
ANGULAR ± 1°																								
DRAFT WHERE APPLICABLE MUST REMAIN WITHIN DIMENSIONS	DRAWN BY: MCKERVEY 2010/04/30 CHECKED BY: ARI INKE 2010/05/02 APPROVED BY: KJANOTA 2010/05/11	MATERIAL NO. 747370035	TITLE SFP ONE PIECE CAGE 0.090 PRESS-FIT PINS BELLY TO BELLY	MOLEX INCORPORATED	SHEET NO. 1 OF 4																			
INITIAL RELEASE IEC NO. USY2010-0519 DRAWN BY: MCKERVEY 2010/04/30 CHECKED BY: CHYDARI INKE 2010/05/02 APPROVED BY: KJANOTA 2010/05/11	DRAFT WHERE APPLICABLE MUST REMAIN WITHIN DIMENSIONS	MATERIAL NO. 747370035	TITLE SFP ONE PIECE CAGE 0.090 PRESS-FIT PINS BELLY TO BELLY	MOLEX INCORPORATED	SHEET NO. 1 OF 4																			

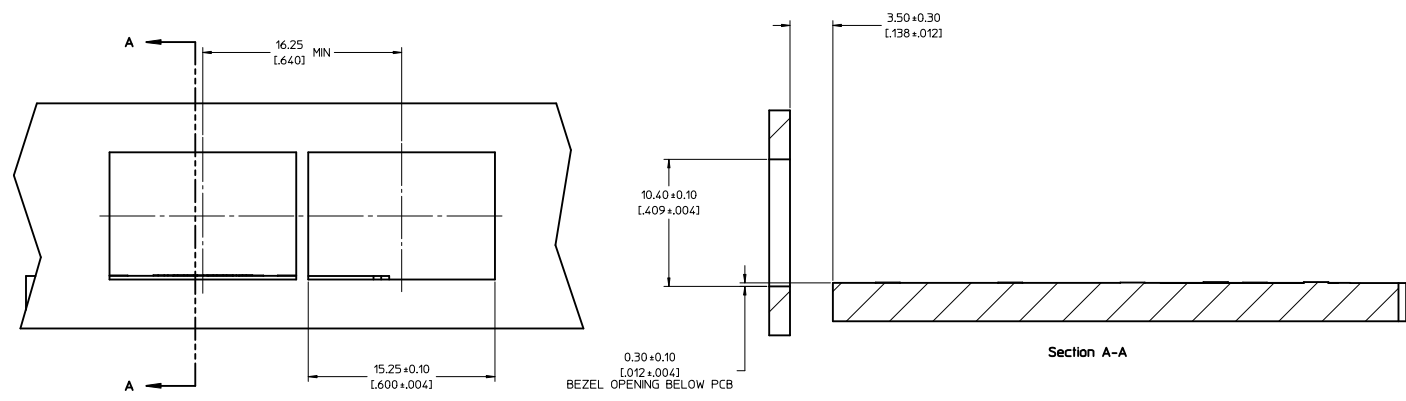
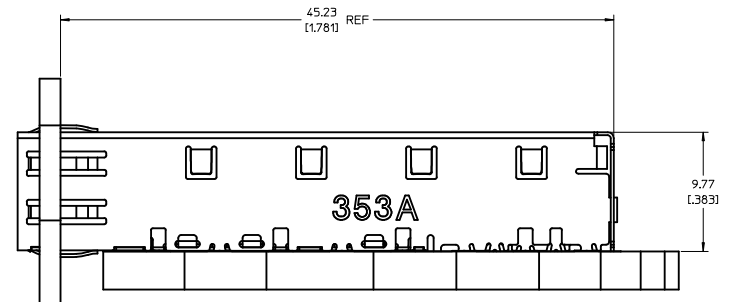
NOTES:

1. DATUM AND BASIC DIMENSIONS ESTABLISHED BY CUSTOMER.
2. PADS AND VIAS ARE CHASSIS GROUND.
3. PCB LAYOUT FOR SINGLE SIDED APPLICATIONS. BELLY TO BELLY MOUNTING REQUIRES LAYOUT MIRRORED ON OPPOSITE SIDE OF BOARD.
4. CONNECTOR PAD LAYOUT PER SFP MSA. WILL ACCOMMODATE MOLEX CONNECTOR SERIES 74441 OR EQUIVALENT



INITIAL RELEASE EC NO. USY2010-0519 DRAWN BY: MCKERVEY 2010/04/30 CHECKED BY: CHYDARIKKE 2010/05/02 APPROVED BY: APPR:K.JANOTA 2010/05/11 REV: A	QUALITY SYMBOLS	GENERAL TOLERANCES (UNLESS SPECIFIED)	DIMENSION STYLE	SCALE	DESIGN UNITS	THIRD ANGLE PROJECTION
	▽=0 ▽=0 ANGLUAR ± 1°	mm INCH 4 PLACES ± --- ± --- 3 PLACES ± --- ± 0.005 2 PLACES ± 0.13 ± 0.01 1 PLACE ± 0.25 ± ---	MM/IN	8:1	METRIC	☉ THIRD ANGLE PROJECTION
	DRAFT WHERE APPLICABLE MUST REMAIN WITHIN DIMENSIONS	DRAWN BY: MCKERVEY 2010/04/30 CHECKED BY: ARI NKE 2010/05/02 APPROVED BY: K.JANOTA 2010/05/11	TITLE	SFP ONE PIECE CAGE 0.090 PRESS-FIT PINS BELLY TO BELLY		
		MATERIAL NO. 747370035 DOCUMENT NO. SD-74737-035	MOLEX INCORPORATED		SHEET NO. 2 OF 4	

20 19 18 17 16 15 14 13 12 11 10 9 8 7 6 5 4 3 2 1

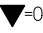
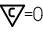



INITIAL RELEASE IEC NO. USY2010-0519 DRAWN: MMCKERVEY 2010/04/30 CHECKED: CHYDARI INKE 2010/05/02 APPR: K. JANOTA 2010/05/11	QUALITY SYMBOLS ▽=0 ▽=0	GENERAL TOLERANCES (UNLESS SPECIFIED)		DIMENSION STYLE MM/IN	SCALE 5:1	DESIGN UNITS METRIC	THIRD ANGLE PROJECTION		
		4 PLACES ± --- ± --- 3 PLACES ± --- ± .005 2 PLACES ± 0.13 ± .01 1 PLACE ± 0.25 ± --- ANGULAR ± 1°	DRAWN BY MMCKERVEY 2010/04/30	CHECKED BY ARI INKE 2010/05/02	APPROVED BY K. JANOTA 2010/05/11	MATERIAL NO. 747370035	DOCUMENT NO. SD-74737-035	TITLE SFP ONE PIECE CAGE 0,090 PRESS-FIT PINS BELLY TO BELLY	SHEET NO. 3 OF 4
		DRAFT WHERE APPLICABLE MUST REMAIN WITHIN DIMENSIONS		THIS DRAWING CONTAINS INFORMATION THAT IS PROPRIETARY TO MOLEX INCORPORATED AND SHOULD NOT BE USED WITHOUT WRITTEN PERMISSION					
		MOLEX INCORPORATED							

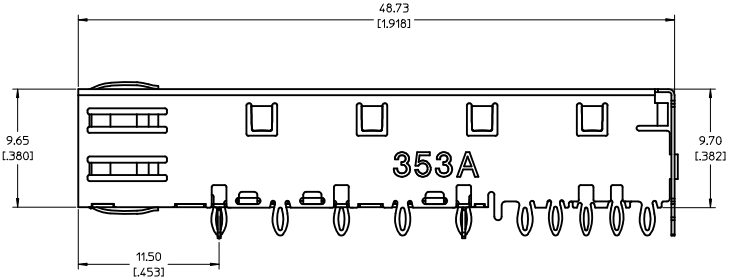
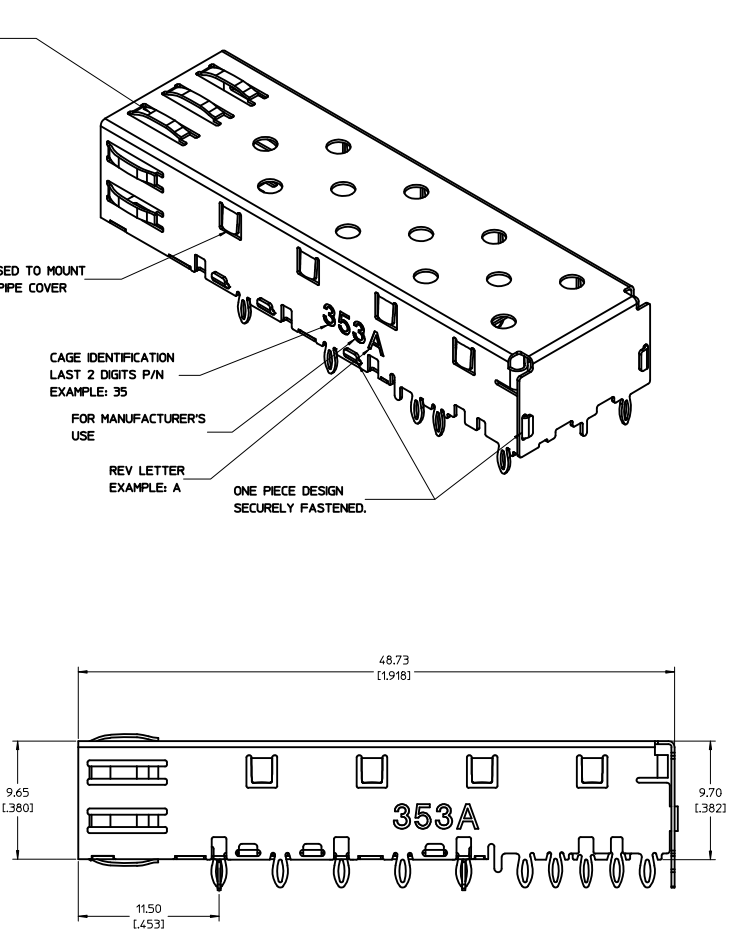
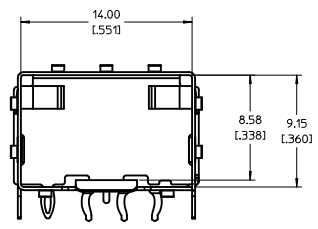
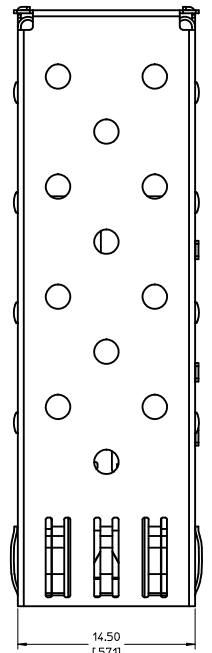
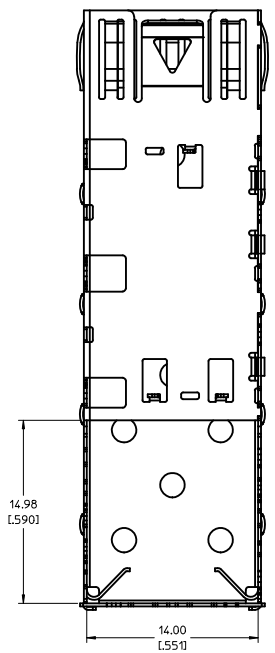
19 18 17 16 15 14 13 12 11 10 9 8 7 6 5 4 3 2 1

20 19 18 17 16 15 14 13 12 11 10 9 8 7 6 5 4 3 2 1

DATE	REV	CHANGES
2010/05/04	A	INITIAL RELEASE.

INITIAL RELEASE IEC NO. USY2010-0519 DRAWN: MMCKERVEY 2010/04/30 CHECKED: ARI INKE 2010/05/02 APPR: K JANOTA 2010/05/11	QUALITY SYMBOLS  = 0  = 0	GENERAL TOLERANCES (UNLESS SPECIFIED) <table border="1"> <thead> <tr> <th></th> <th>mm</th> <th>INCH</th> </tr> </thead> <tbody> <tr> <td>4 PLACES</td> <td>± ---</td> <td>± ---</td> </tr> <tr> <td>3 PLACES</td> <td>± ---</td> <td>± .005</td> </tr> <tr> <td>2 PLACES</td> <td>± 0.13</td> <td>± .01</td> </tr> <tr> <td>1 PLACE</td> <td>± 0.25</td> <td>± ---</td> </tr> </tbody> </table> ANGULAR ± 1°		mm	INCH	4 PLACES	± ---	± ---	3 PLACES	± ---	± .005	2 PLACES	± 0.13	± .01	1 PLACE	± 0.25	± ---	DIMENSION STYLE MM/IN	SCALE 5:1	DESIGN UNITS METRIC	THIRD ANGLE PROJECTION 
		mm	INCH																		
	4 PLACES	± ---	± ---																		
	3 PLACES	± ---	± .005																		
2 PLACES	± 0.13	± .01																			
1 PLACE	± 0.25	± ---																			
DRAWN BY MMCKERVEY	DATE 2010/04/30	TITLE SFP ONE PIECE CAGE 0,090 PRESS-FIT PINS BELLY TO BELLY	MOLEX INCORPORATED																		
CHECKED BY ARI INKE	DATE 2010/05/02	APPROVED BY K JANOTA	DATE 2010/05/11	MATERIAL NO. 747370035	DOCUMENT NO. SD-74737-035	SHEET NO. 4 OF 4															
DRAFT WHERE APPLICABLE MUST REMAIN WITHIN DIMENSIONS																					

19 18 17 16 15 14 13 12 11 10 9 8 7 6 5 4 3 2 1



NOTES:

1. PRESS FIT LEGS, 0.090 INCHES LONG.
1.57 [0.062] MINIMUM PCB THICKNESS.
2. SINGLE SIDED BOARD THICKNESS
NOMINAL: 1.60 [0.062"]
MINIMUM: 1.44 [0.057"]
BELLY TO BELLY BOARD THICKNESS
NOMINAL: 2.30 [0.090"]
MINIMUM: 2.07 [0.081"]
3. CAN BE USED WITH THE FOLLOWING LIGHT PIPE NUMBERS:

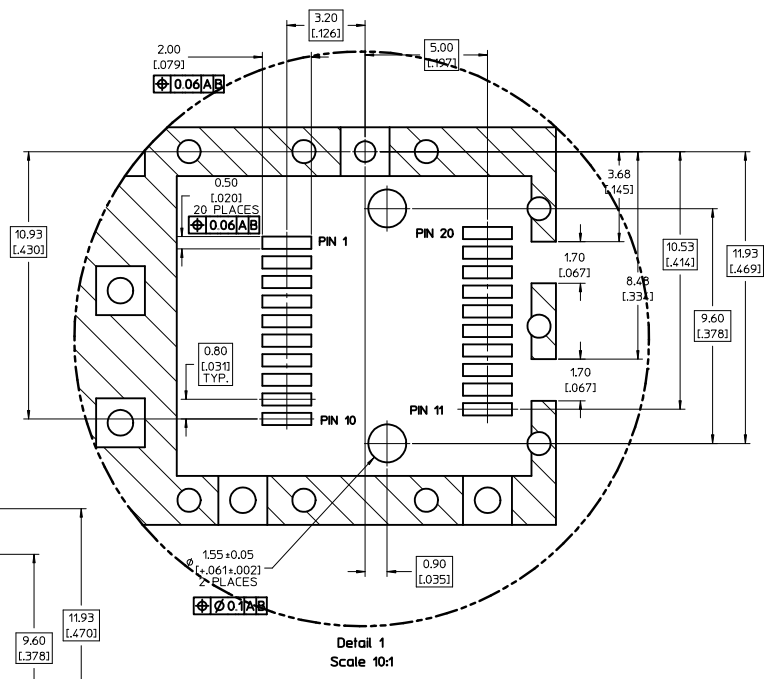
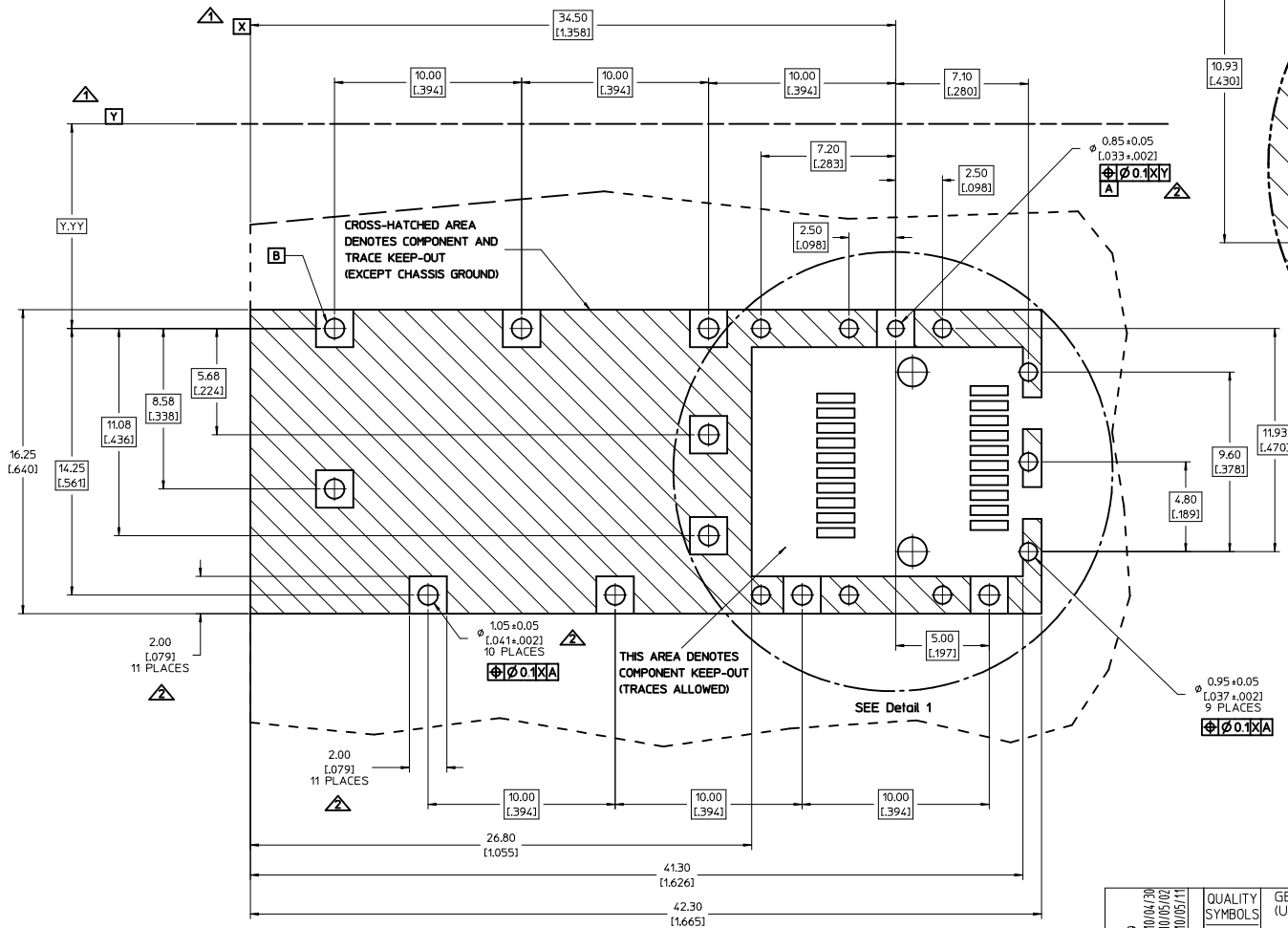
747260001 - LIGHT PIPE FROM BACK TO TOP
(REFER TO DOCUMENT SD-74726-001)

747260002 - LIGHT PIPE FROM SIDE TO TOP
(REFER TO DOCUMENT SD-74726-002)
4. MATERIAL: COPPER ALLOY
PLATING: PRE-PLATED WITH NICKEL
5. THIS PART MEETS THE RESTRICTION OF HAZARDOUS SUBSTANCES IN ELECTRICAL AND ELECTRONIC EQUIPMENT (RoHS) DIRECTIVE (2002/95/EC).

INITIAL RELEASE IEC NO. USY2010-0519 DRAWN BY: MCKERVEY 2010/04/30 CHECKED BY: CHYDARI INKE 2010/05/02 APPROVED BY: KJANOTA 2010/05/11	QUALITY SYMBOLS	GENERAL TOLERANCES (UNLESS SPECIFIED)	DIMENSION STYLE	SCALE	DESIGN UNITS	THIRD ANGLE PROJECTION	
	$\nabla=0$ $\nabla=0$	mm INCH 4 PLACES ± --- ± --- 3 PLACES ± --- ± .005 2 PLACES ± 0.13 ± .01 1 PLACE ± 0.25 ± --- ANGULAR ± 1°	MM/IN	5:1	METRIC		
	DRAWN BY: MCKERVEY 2010/04/30 CHECKED BY: ARI INKE 2010/05/02 APPROVED BY: KJANOTA 2010/05/11	DRAFT WHERE APPLICABLE MUST REMAIN WITHIN DIMENSIONS	MATERIAL NO. 747370035 SIZE D	DATE: 2010/04/30 DATE: 2010/05/02 DATE: 2010/05/11	TITLE: SFP ONE PIECE CAGE 0.090 PRESS-FIT PINS BELLY TO BELLY	MOLEX INCORPORATED	SHEET NO. 1 OF 4
	DOCUMENT NO. SD-74737-035	THIS DRAWING CONTAINS INFORMATION THAT IS PROPRIETARY TO MOLEX INCORPORATED AND SHOULD NOT BE USED WITHOUT WRITTEN PERMISSION					

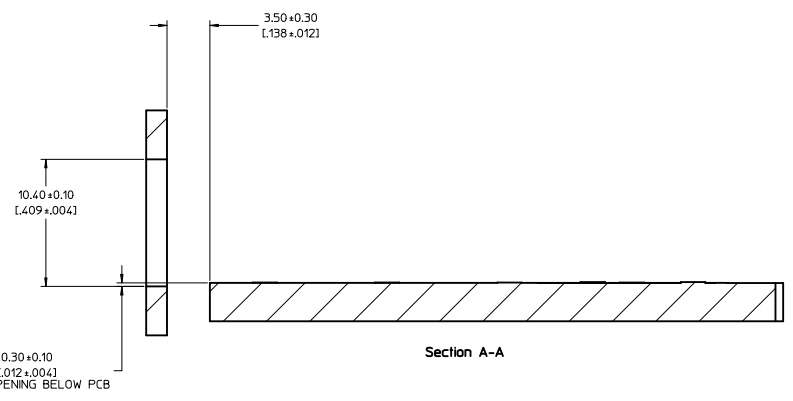
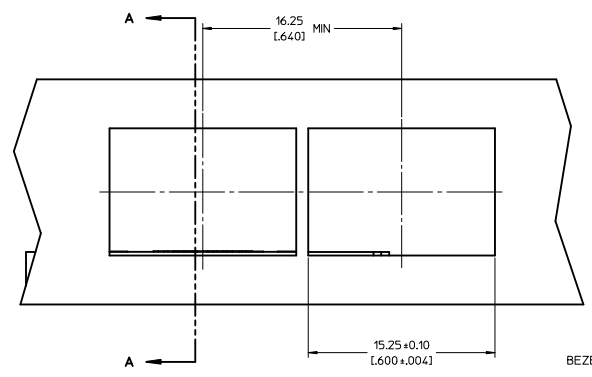
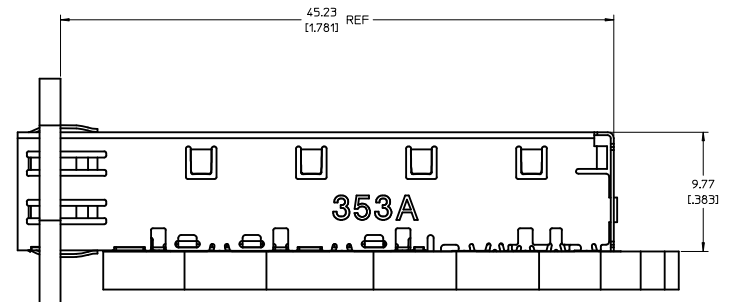
NOTES:

1. DATUM AND BASIC DIMENSIONS ESTABLISHED BY CUSTOMER.
2. PADS AND VIAS ARE CHASSIS GROUND.
3. PCB LAYOUT FOR SINGLE SIDED APPLICATIONS. BELLY TO BELLY MOUNTING REQUIRES LAYOUT MIRRORED ON OPPOSITE SIDE OF BOARD.
4. CONNECTOR PAD LAYOUT PER SFP MSA. WILL ACCOMMODATE MOLEX CONNECTOR SERIES 74441 OR EQUIVALENT



INITIAL RELEASE EC NO. USY2010-0519 DRAWN BY: MCKERVEY 2010/04/30 CHECKED BY: CHYDARIKKE 2010/05/02 APPROVED BY: KJANOTA 2010/05/11	QUALITY SYMBOLS	GENERAL TOLERANCES (UNLESS SPECIFIED)	DIMENSION STYLE	SCALE	DESIGN UNITS	THIRD ANGLE PROJECTION
	▽=0 ▽=0	mm INCH 4 PLACES ± --- ± --- 3 PLACES ± --- ± 0.005 2 PLACES ± 0.13 ± 0.01 1 PLACE ± 0.25 ± --- ANGULAR ± 1°	MM/IN	8:1	METRIC	☉ THIRD ANGLE PROJECTION
	DESCRIPTION	DRAFT WHERE APPLICABLE MUST REMAIN WITHIN DIMENSIONS	DRAWN BY: MCKERVEY 2010/04/30	DATE: 2010/04/30	TITLE: SFP ONE PIECE CAGE 0.090 PRESS-FIT PINS BELLY TO BELLY	
	MATERIAL NO. 747370035 DOCUMENT NO. SD-74737-035	APPROVED BY: KJANOTA 2010/05/11 DATE: 2010/05/11	MOLEX INCORPORATED		SHEET NO. 2 OF 4	

20 19 18 17 16 15 14 13 12 11 10 9 8 7 6 5 4 3 2 1

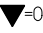
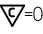



INITIAL RELEASE IEC NO. USY2010-0519 DRAWN: MMCKERVEY 2010/04/30 CHECKED: CHYDARI INKE 2010/05/02 APPROVED: KJANOTA 2010/05/11	QUALITY SYMBOLS ▽=0 ▽=0	GENERAL TOLERANCES (UNLESS SPECIFIED)		DIMENSION STYLE MM/IN	SCALE 5:1	DESIGN UNITS METRIC	THIRD ANGLE PROJECTION		
		4 PLACES ± --- ± --- 3 PLACES ± --- ± .005 2 PLACES ± 0.13 ± .01 1 PLACE ± 0.25 ± --- ANGULAR ± 1°	DRAWN BY MMCKERVEY 2010/04/30	CHECKED BY ARI INKE 2010/05/02	APPROVED BY KJANOTA 2010/05/11	TITLE SFP ONE PIECE CAGE 0,090 PRESS-FIT PINS BELLY TO BELLY	MATERIAL NO. 747370035	DOCUMENT NO. SD-74737-035	SHEET NO. 3 OF 4
		DRAFT WHERE APPLICABLE MUST REMAIN WITHIN DIMENSIONS		MOLEX INCORPORATED					
		THIS DRAWING CONTAINS INFORMATION THAT IS PROPRIETARY TO MOLEX INCORPORATED AND SHOULD NOT BE USED WITHOUT WRITTEN PERMISSION							

19 18 17 16 15 14 13 12 11 10 9 8 7 6 5 4 3 2 1

20 19 18 17 16 15 14 13 12 11 10 9 8 7 6 5 4 3 2 1

DATE	REV	CHANGES
2010/05/04	A	INITIAL RELEASE.

INITIAL RELEASE IEC NO. USY2010-0519 DRAWN: MMCKERVEY 2010/04/30 CHECKED: ARI INKE 2010/05/02 APPR: K JANOTA 2010/05/11	QUALITY SYMBOLS  = 0  = 0	GENERAL TOLERANCES (UNLESS SPECIFIED) <table border="1"> <thead> <tr> <th></th> <th>mm</th> <th>INCH</th> </tr> </thead> <tbody> <tr> <td>4 PLACES</td> <td>± ---</td> <td>± ---</td> </tr> <tr> <td>3 PLACES</td> <td>± ---</td> <td>± .005</td> </tr> <tr> <td>2 PLACES</td> <td>± 0.13</td> <td>± .01</td> </tr> <tr> <td>1 PLACE</td> <td>± 0.25</td> <td>± ---</td> </tr> </tbody> </table> ANGULAR ± 1°		mm	INCH	4 PLACES	± ---	± ---	3 PLACES	± ---	± .005	2 PLACES	± 0.13	± .01	1 PLACE	± 0.25	± ---	DIMENSION STYLE MM/IN	SCALE 5:1	DESIGN UNITS METRIC	THIRD ANGLE PROJECTION 
		mm	INCH																		
	4 PLACES	± ---	± ---																		
	3 PLACES	± ---	± .005																		
2 PLACES	± 0.13	± .01																			
1 PLACE	± 0.25	± ---																			
DRAWN BY MMCKERVEY	DATE 2010/04/30	TITLE SFP ONE PIECE CAGE 0,090 PRESS-FIT PINS BELLY TO BELLY	MOLEX INCORPORATED																		
CHECKED BY ARI INKE	DATE 2010/05/02	APPROVED BY K JANOTA	DATE 2010/05/11	MATERIAL NO. 747370035	DOCUMENT NO. SD-74737-035	SHEET NO. 4 OF 4															
DRAFT WHERE APPLICABLE MUST REMAIN WITHIN DIMENSIONS			THIS DRAWING CONTAINS INFORMATION THAT IS PROPRIETARY TO MOLEX INCORPORATED AND SHOULD NOT BE USED WITHOUT WRITTEN PERMISSION																		

19 18 17 16 15 14 13 12 11 10 9 8 7 6 5 4 3 2 1