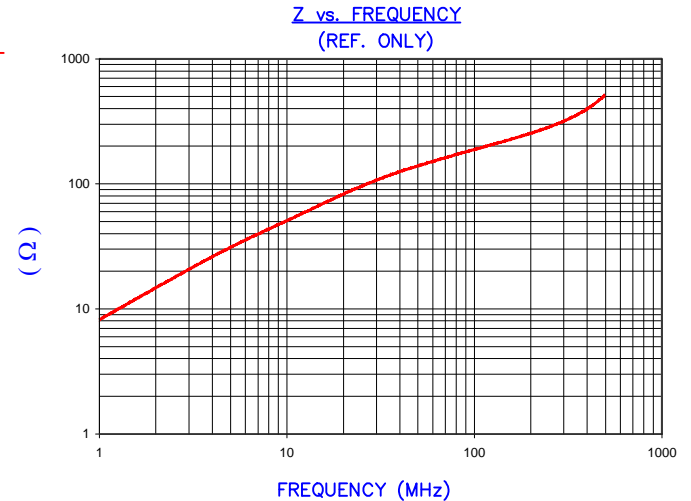


DETAIL "A"  
CHAMFER  
SCALE=8:1

IMPEDANCE ( Z )			
Frequency	25 MHz	100 MHz	300 MHz
Nominal (REF)	110 Ω	205 Ω	360 Ω
Minimum	- Ω	164 Ω	- Ω



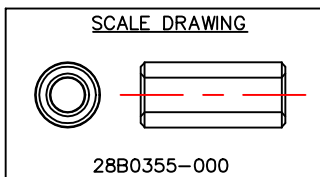
FERRITE CORE DIMENSIONS (SPEC): mm [in]

A	9.00 [.354]	+ 0.25 [.010]
B	4.75 [.187]	+ 0.15 [.006]
C	20.00 [.787]	+ 0.70 [.028]

WEIGHT/1000    4.46 kgs    [9.83 Lbs]

NOTES: UNLESS OTHERWISE SPECIFIED

1. COSMETIC SPECIFICATION REFER TO WI-QA-038.



DIMENSIONS ARE IN mm [INCHES].				This print is the property of Laird Tech. and is loaned in confidence subject to return upon request and with the understanding that no copies shall be made without the written consent of Laird Tech. All rights to design or invention are reserved.		<b>Laird</b>	
				PROJECT/PART NUMBER:	REV	PART TYPE:	DRAWN BY:
				28B0355-000	B	FERRITE CORE	JRK
B	UPDATED COMPANY LOGO ,ADD NOTE	08/28/14	QIU	DATE:	SCALE:	MATERIAL:	
A	ORIGINAL DRAFT	09/04/03	JRK	09/04/03	4 : 1	Ferrite	
REV	DESCRIPTION	DATE	INT	CAD #	TOOL #		
				28B0355-000-B	B0355		