

NOTES:

1. PRESS FIT LEGS, 0.120 INCHES LONG.
2. THIS CAGE IS FOR SINGLE SIDED USE ONLY.
3. CAN BE USED WITH THE FOLLOWING LIGHT PIPE PART NUMBERS:
 - 747260001 - LIGHT PIPE FROM BACK TO TOP
(REFER TO DOCUMENT SD-74726-001)
 - 747260002 - LIGHT PIPE FROM SIDE TO TOP
(REFER TO DOCUMENT SD-74726-002)
4. MATERIAL: COPPER ALLOY
PLATING: PRE-PLATED WITH NICKEL
5. THIS PART MEETS THE RESTRICTION OF HAZARDOUS SUBSTANCES IN ELECTRICAL AND ELECTRONIC EQUIPMENT (ROHS) DIRECTIVE (2002/95/EC).

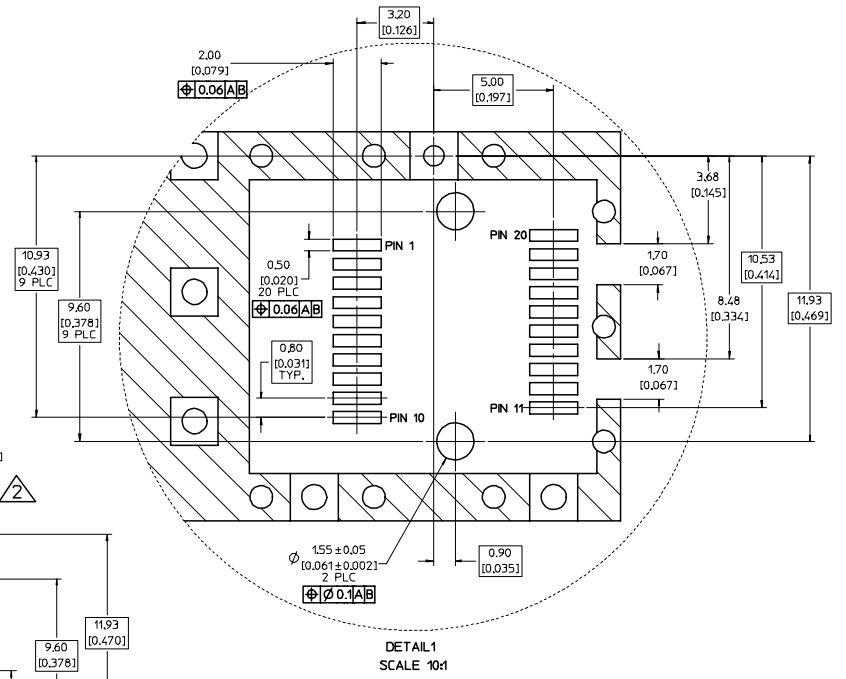
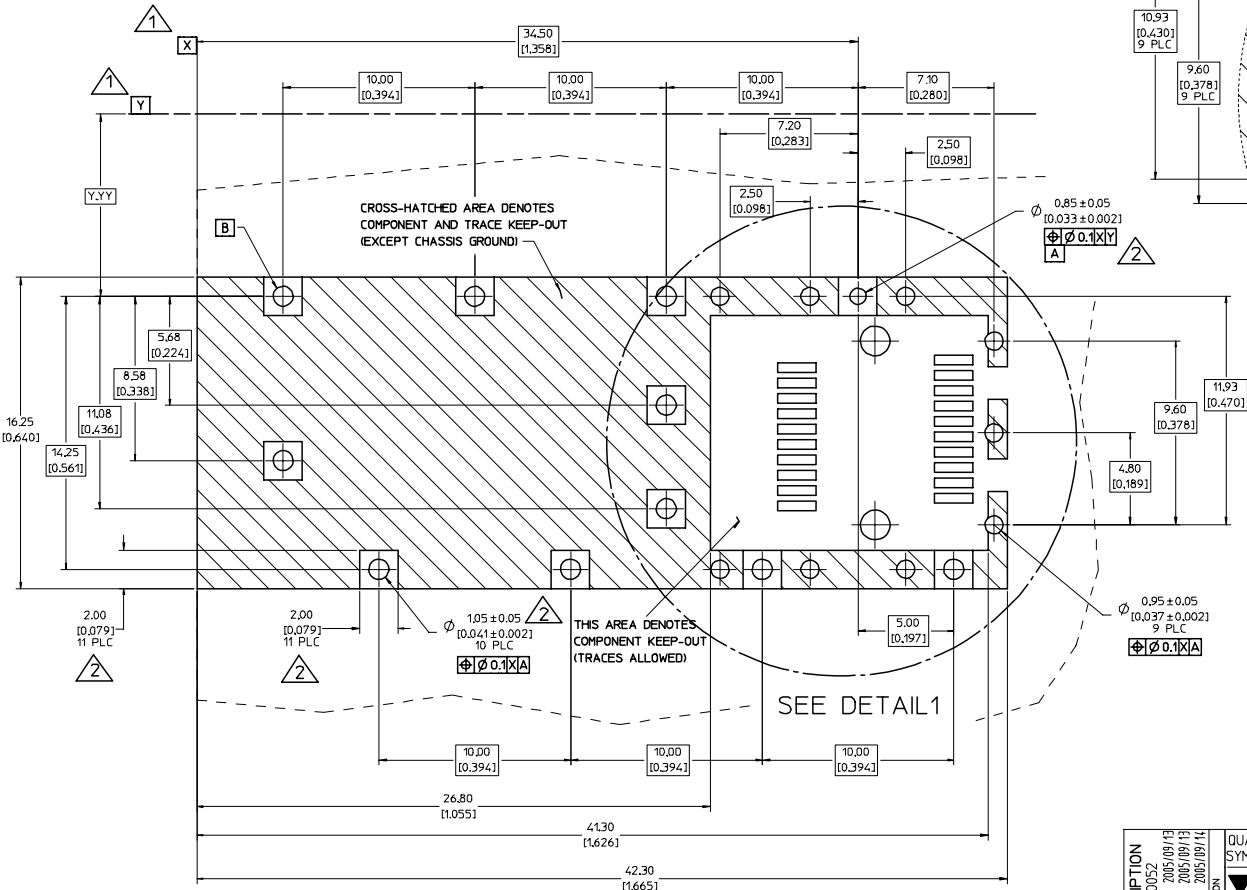
ENTER DESCRIPTION EC NO: UST2006-0052 DRWN: KJ MONSON 2005/09/13 CHKD: BRUSSELL 2005/09/13 APPR: BRUSSELL 2005/09/14	QUALITY SYMBOLS	GENERAL TOLERANCES (UNLESS SPECIFIED)	DIMENSION STYLE	SCALE	DESIGN UNITS	THIRD ANGLE PROJECTION												
	$\nabla=0$ $\nabla=0$	<table border="1"> <tr><th>mm</th><th>INCH</th></tr> <tr><td>4 PLACES ± .005</td><td>± .005</td></tr> <tr><td>3 PLACES ± .013</td><td>± .01</td></tr> <tr><td>2 PLACES ± .025</td><td>± .01</td></tr> <tr><td>1 PLACE ± .025</td><td>± .01</td></tr> <tr><td colspan="2">ANGULAR ± 1 °</td></tr> </table>	mm	INCH	4 PLACES ± .005	± .005	3 PLACES ± .013	± .01	2 PLACES ± .025	± .01	1 PLACE ± .025	± .01	ANGULAR ± 1 °		MM/IN	5:1	METRIC	
	mm	INCH																
	4 PLACES ± .005	± .005																
3 PLACES ± .013	± .01																	
2 PLACES ± .025	± .01																	
1 PLACE ± .025	± .01																	
ANGULAR ± 1 °																		
DESCRIPTION																		
		DRAFT WHERE APPLICABLE MUST REMAIN WITHIN DIMENSIONS	MATERIAL NO: 747370014	DATE 2005/09/12	DATE 2005/09/12	DATE 2005/09/12												

SFP ONE PIECE CAGE
PRESS-FIT (0.120 LEGS)
WITH KAPTON TAPE

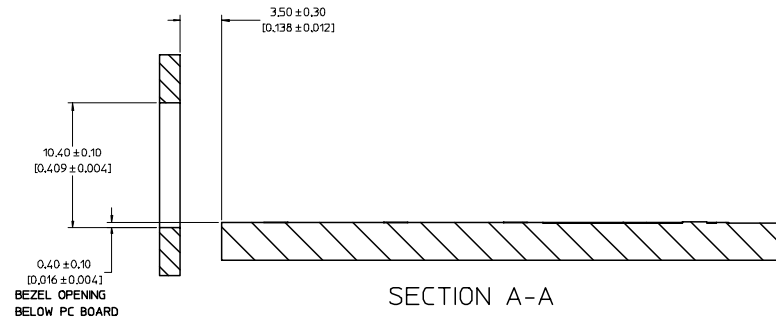
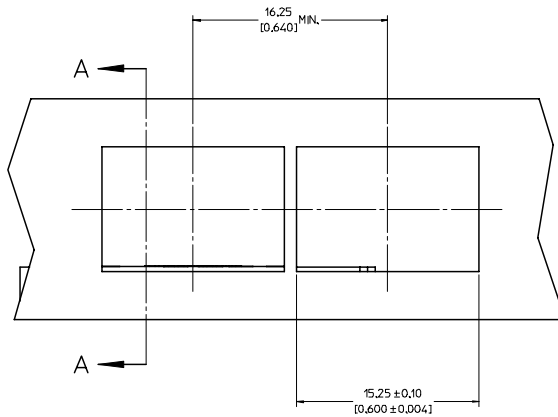
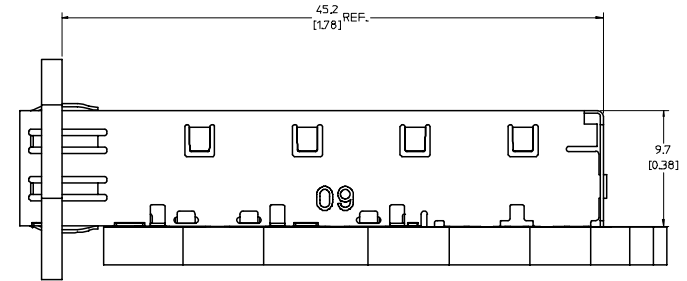
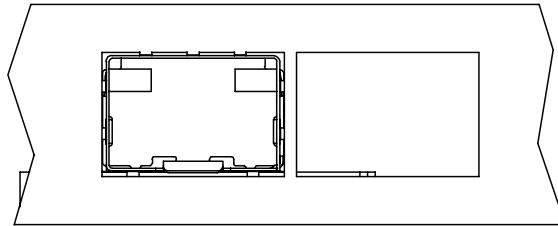
MOLEX INCORPORATED

DOCUMENT NO. SD-74737-0014
SHEET NO. 1 OF 3

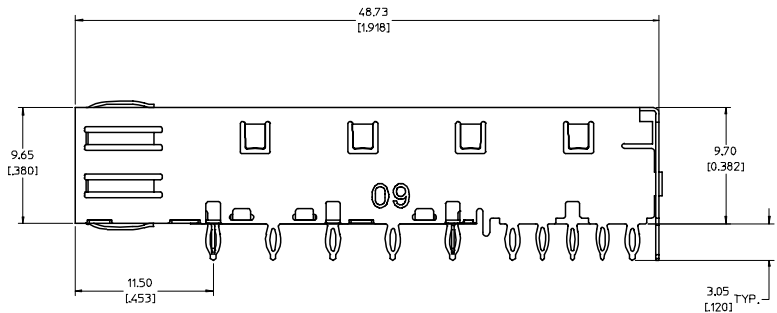
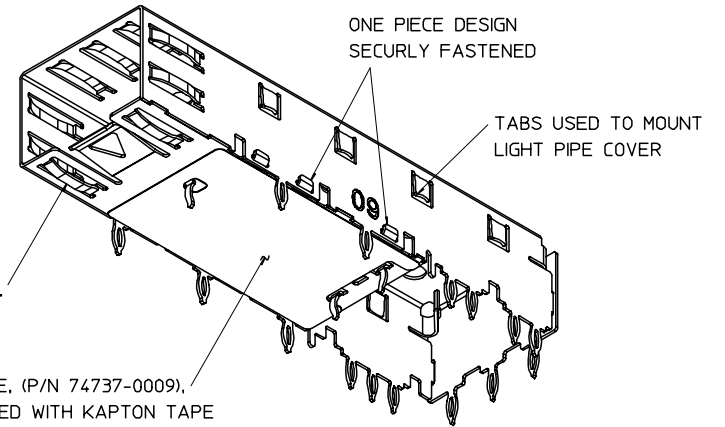
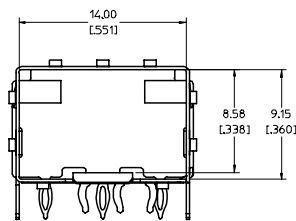
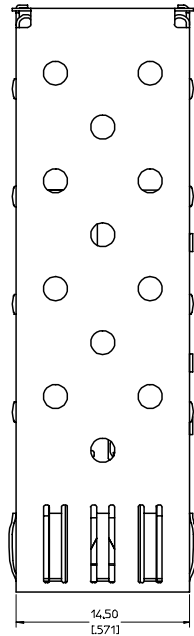
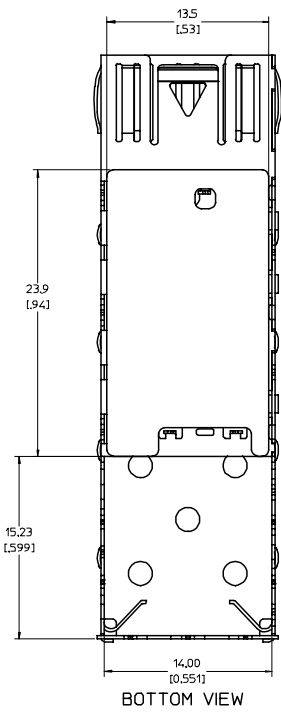
- 1 DATUM AND BASIC DIMENSIONS ESTABLISHED BY CUSTOMER.
- 2 PADS AND VIAS ARE CHASSIS GROUND.
- 3 HOLE LAYOUT SHOWN IS FOR SINGLE SIDED MOUNTING ONLY.
4. CONNECTOR PAD LAYOUT PER SFP MSA. WILL ACCOMMODATE MOLEX CONNECTOR SERIES 74441 OR EQUIVALENT.



ENTER DESCRIPTION EC NO: UST2006-0052 DRINKS MONSON 2005/09/13 CHKD: BRUSSELL 2005/09/13 APPR: BRUSSELL 2005/09/14	QUALITY SYMBOLS	GENERAL TOLERANCES (UNLESS SPECIFIED)	DIMENSION STYLE	SCALE	DESIGN UNITS	THIRD ANGLE PROJECTION												
	$\nabla=0$ $\nabla=0$	<table border="1"> <tr><th>mm</th><th>INCH</th></tr> <tr><td>4 PLACES ± .005</td><td>± .005</td></tr> <tr><td>3 PLACES ± .01</td><td>± .01</td></tr> <tr><td>2 PLACES ± .013</td><td>± .01</td></tr> <tr><td>1 PLACE ± 0.25</td><td>± .01</td></tr> <tr><td>ANGULAR ± 1°</td><td></td></tr> </table>	mm	INCH	4 PLACES ± .005	± .005	3 PLACES ± .01	± .01	2 PLACES ± .013	± .01	1 PLACE ± 0.25	± .01	ANGULAR ± 1°		MM/IN	8:1	METRIC	
	mm	INCH																
	4 PLACES ± .005	± .005																
3 PLACES ± .01	± .01																	
2 PLACES ± .013	± .01																	
1 PLACE ± 0.25	± .01																	
ANGULAR ± 1°																		
DRAFT WHERE APPLICABLE MUST REMAIN WITHIN DIMENSIONS	DRAWN BY: KS IMONSO 2005/09/12 CHECKED BY: BRUSSELL 2005/09/12 APPROVED BY: BRUSSELL 2005/09/12	MATERIAL NO: 747370014 DOCUMENT NO: SD-74737-0014	TITLE: SFP ONE PIECE CAGE PRESS-FIT (0.120 LEGS) WITH KAPTON TAPE MOLEX INCORPORATED	SHEET NO: 2 OF 3														
THIS DRAWING CONTAINS INFORMATION THAT IS PROPRIETARY TO MOLEX INCORPORATED AND SHOULD NOT BE USED WITHOUT WRITTEN PERMISSION																		



ENTER DESCRIPTION EC NO: UST2006-0052 DRWN: KJ IMONSON 2005/09/13 CHKD: BRUSSELL 2005/09/13 APPR: BRUSSELL 2005/09/14	QUALITY SYMBOLS ▽=0 ▽=0	GENERAL TOLERANCES (UNLESS SPECIFIED)		DIMENSION STYLE MM/IN		SCALE 5:1	DESIGN UNITS METRIC	THIRD ANGLE PROJECTION
		4 PLACES ± --- ± --- 3 PLACES ± --- ± .005 2 PLACES ± 0.13 ± .01 1 PLACE ± 0.25 ± ---	mm INCH	DRAWN BY KJ IMONSON	DATE 2005/09/12	TITLE SFP ONE PIECE CAGE PRESS-FIT (0.120 LEGS) WITH KAPTON TAPE		
		ANGULAR ± 1 °	APPROVED BY BRUSSELL	DATE 2005/09/12	MOLEX INCORPORATED			
		DRAFT WHERE APPLICABLE MUST REMAIN WITHIN DIMENSIONS	MATERIAL NO. 747370014	DOCUMENT NO. SD-74737-0014	SHEET NO. 3 OF 3			



NOTES:

- PRESS FIT LEGS, 0.120 INCHES LONG.
- THIS CAGE IS FOR SINGLE SIDED USE ONLY.
- CAN BE USED WITH THE FOLLOWING LIGHT PIPE PART NUMBERS:

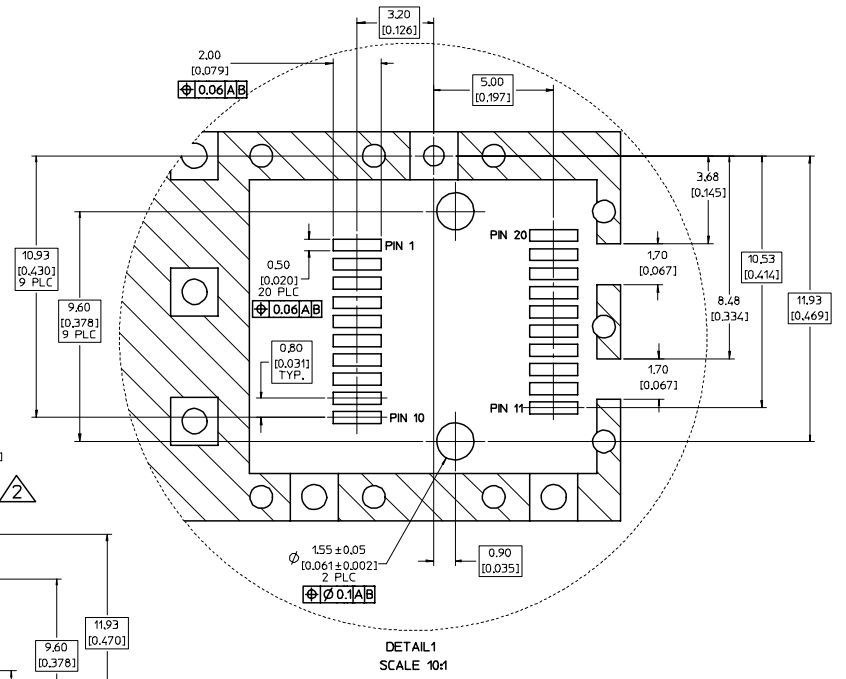
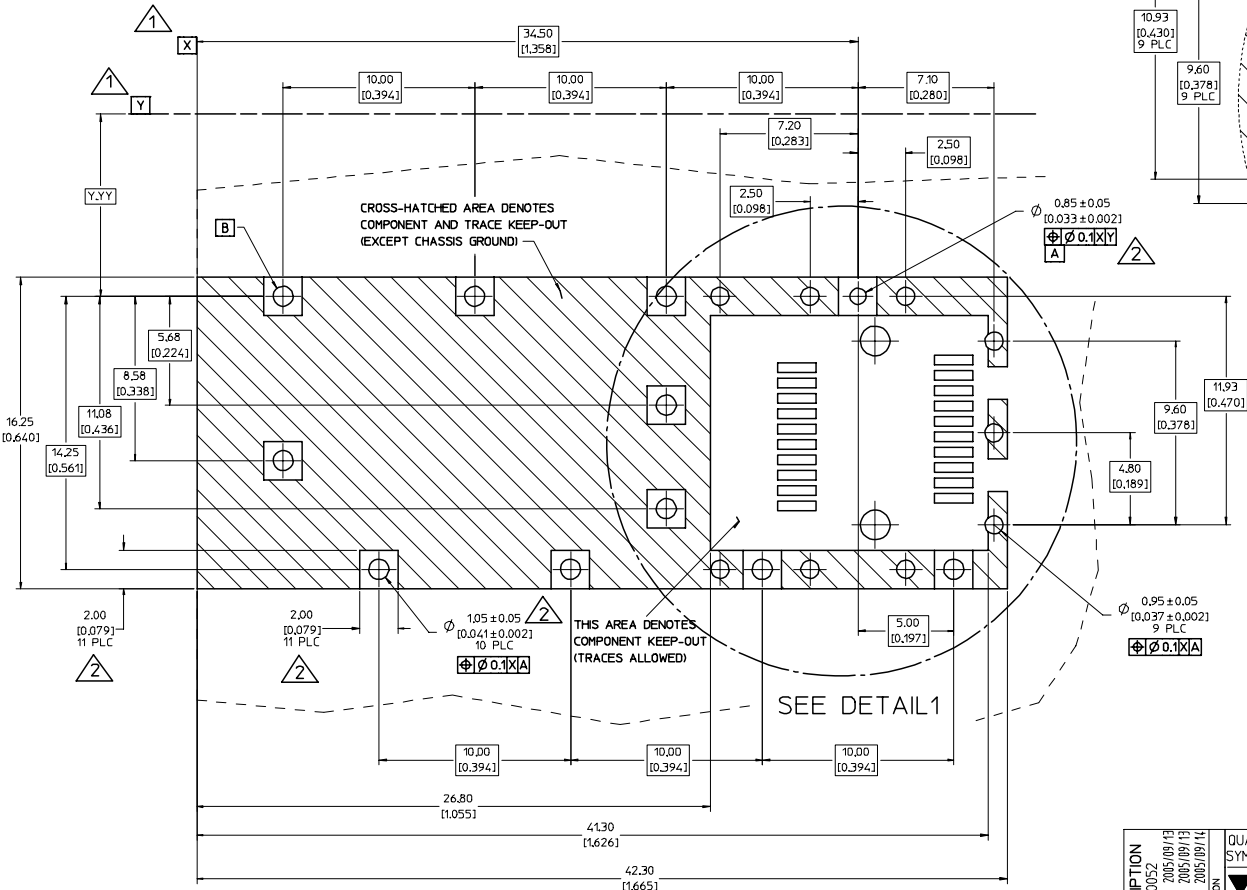
747260001 - LIGHT PIPE FROM BACK TO TOP
(REFER TO DOCUMENT SD-74726-001)

747260002 - LIGHT PIPE FROM SIDE TO TOP
(REFER TO DOCUMENT SD-74726-002)

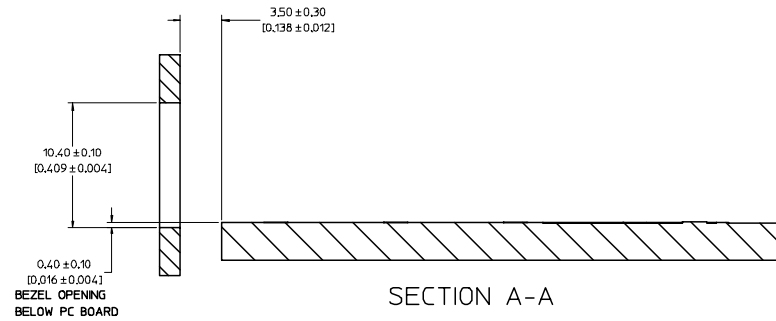
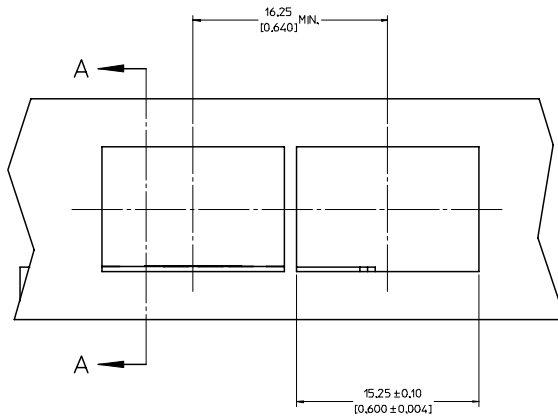
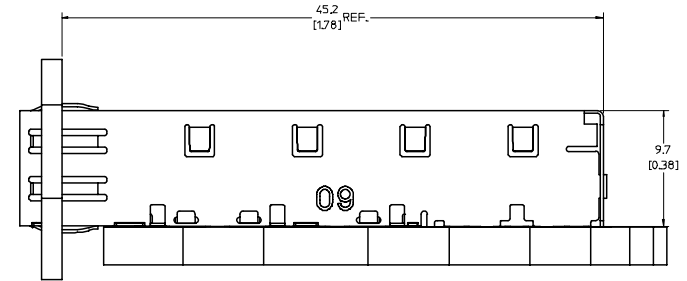
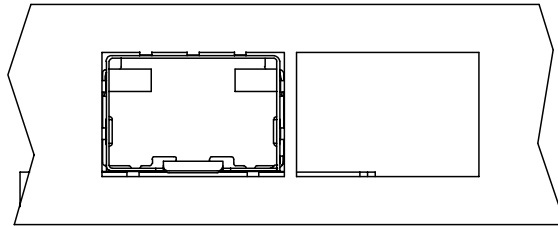
- MATERIAL: COPPER ALLOY
PLATING: PRE-PLATED WITH NICKEL
- THIS PART MEETS THE RESTRICTION OF HAZARDOUS SUBSTANCES IN ELECTRICAL AND ELECTRONIC EQUIPMENT (ROHS) DIRECTIVE (2002/95/EC).

ENTER DESCRIPTION EC NO: USY2006-0052 DRWN:KJMONSON 2005/09/13 CHK:BRUSSELL 2005/09/13 APPR:BRUSSELL 2005/09/14	QUALITY SYMBOLS	GENERAL TOLERANCES (UNLESS SPECIFIED)	DIMENSION STYLE	SCALE	DESIGN UNITS	THIRD ANGLE PROJECTION																		
	$\nabla=0$ $\nabla=0$	<table border="1"> <tr> <th></th> <th>mm</th> <th>INCH</th> </tr> <tr> <td>4 PLACES</td> <td>± .13</td> <td>± .005</td> </tr> <tr> <td>3 PLACES</td> <td>± .13</td> <td>± .01</td> </tr> <tr> <td>2 PLACES</td> <td>± 0.25</td> <td>± .01</td> </tr> <tr> <td>1 PLACE</td> <td>± 0.25</td> <td>± .01</td> </tr> <tr> <td>ANGULAR</td> <td colspan="2">± 1 °</td> </tr> </table>		mm	INCH	4 PLACES	± .13	± .005	3 PLACES	± .13	± .01	2 PLACES	± 0.25	± .01	1 PLACE	± 0.25	± .01	ANGULAR	± 1 °		MM/IN	5:1	METRIC	
		mm	INCH																					
	4 PLACES	± .13	± .005																					
3 PLACES	± .13	± .01																						
2 PLACES	± 0.25	± .01																						
1 PLACE	± 0.25	± .01																						
ANGULAR	± 1 °																							
DESCRIPTION	DRAWN BY: KJMONSON DATE: 2005/09/13		DATE	TITLE: SFP ONE PIECE CAGE PRESS-FIT (0.120 LEGS) WITH KAPTON TAPE																				
	CHECKED BY: BRUSSELL DATE: 2005/09/13		DATE	MOLEX INCORPORATED																				
	APPROVED BY: BRUSSELL DATE: 2005/09/14		DATE	MATERIAL NO: 747370014 DOCUMENT NO: SD-74737-0014 SHEET NO: 1 OF 3																				
DRAFT WHERE APPLICABLE MUST REMAIN WITHIN DIMENSIONS			SIZE: D	THIS DRAWING CONTAINS INFORMATION THAT IS PROPRIETARY TO MOLEX INCORPORATED AND SHOULD NOT BE USED WITHOUT WRITTEN PERMISSION																				

- 1 DATUM AND BASIC DIMENSIONS ESTABLISHED BY CUSTOMER.
- 2 PADS AND VIAS ARE CHASSIS GROUND.
- 3 HOLE LAYOUT SHOWN IS FOR SINGLE SIDED MOUNTING ONLY.
4. CONNECTOR PAD LAYOUT PER SFP MSA. WILL ACCOMMODATE MOLEX CONNECTOR SERIES 74441 OR EQUIVALENT.



ENTER DESCRIPTION EC NO: UST2006-0052 DRINKS MONSON 2005/09/13 CHK: BRUSSELL 2005/09/13 APPR: BRUSSELL 2005/09/14	QUALITY SYMBOLS	GENERAL TOLERANCES (UNLESS SPECIFIED)	DIMENSION STYLE	SCALE	DESIGN UNITS	THIRD ANGLE PROJECTION												
	$\nabla=0$ $\nabla=0$	<table border="1"> <tr> <th>mm</th> <th>INCH</th> </tr> <tr> <td>4 PLACES ± ---</td> <td>± ---</td> </tr> <tr> <td>3 PLACES ± ---</td> <td>± .005</td> </tr> <tr> <td>2 PLACES ± 0.13</td> <td>± .01</td> </tr> <tr> <td>1 PLACE ± 0.25</td> <td>± ---</td> </tr> <tr> <td colspan="2">ANGULAR ± 1 °</td> </tr> </table>	mm	INCH	4 PLACES ± ---	± ---	3 PLACES ± ---	± .005	2 PLACES ± 0.13	± .01	1 PLACE ± 0.25	± ---	ANGULAR ± 1 °		MM/IN	8:1	METRIC	
	mm	INCH																
	4 PLACES ± ---	± ---																
3 PLACES ± ---	± .005																	
2 PLACES ± 0.13	± .01																	
1 PLACE ± 0.25	± ---																	
ANGULAR ± 1 °																		
DRAFT WHERE APPLICABLE MUST REMAIN WITHIN DIMENSIONS	DRAWN BY: KS IMONSO CHECKED BY: BRUSSELL APPROVED BY: BRUSSELL DATE: 2005/09/12 DATE: 2005/09/12 DATE: 2005/09/12	MATERIAL NO: 747370014 DOCUMENT NO: SD-74737-0014	TITLE: SFP ONE PIECE CAGE PRESS-FIT (0.120 LEGS) WITH KAPTON TAPE MOLEX INCORPORATED	SHEET NO: 2 OF 3														
THIS DRAWING CONTAINS INFORMATION THAT IS PROPRIETARY TO MOLEX INCORPORATED AND SHOULD NOT BE USED WITHOUT WRITTEN PERMISSION																		



ENTER DESCRIPTION EC NO: UST2006-0052 DRAWN BY: DRANKS MONSON 2005/09/13 CHECKED BY: CHUCK BRUSSELL 2005/09/13 APPROVED BY: BRUSSELL 2005/09/14	QUALITY SYMBOLS ▽=0 ▽=0	GENERAL TOLERANCES (UNLESS SPECIFIED)		DIMENSION STYLE MM/IN		SCALE 5:1	DESIGN UNITS METRIC	THIRD ANGLE PROJECTION	
		4 PLACES ± --- ± --- 3 PLACES ± --- ± .005 2 PLACES ± 0.13 ± .01 1 PLACE ± 0.25 ± ---	mm INCH	DRAWN BY: KS IMONSO CHECKED BY: BRUSSELL APPROVED BY: BRUSSELL	DATE: 2005/09/12 DATE: 2005/09/12 DATE: 2005/09/12	TITLE SFP ONE PIECE CAGE PRESS-FIT (0.120 LEGS) WITH KAPTON TAPE			
		ANGULAR ± 1 °		MATERIAL NO: 747370014		DOCUMENT NO: SD-74737-0014		MOLEX INCORPORATED	
		DRAFT WHERE APPLICABLE MUST REMAIN WITHIN DIMENSIONS		SIZE: D		THIS DRAWING CONTAINS INFORMATION THAT IS PROPRIETARY TO MOLEX INCORPORATED AND SHOULD NOT BE USED WITHOUT WRITTEN PERMISSION		SHEET NO: 3 OF 3	