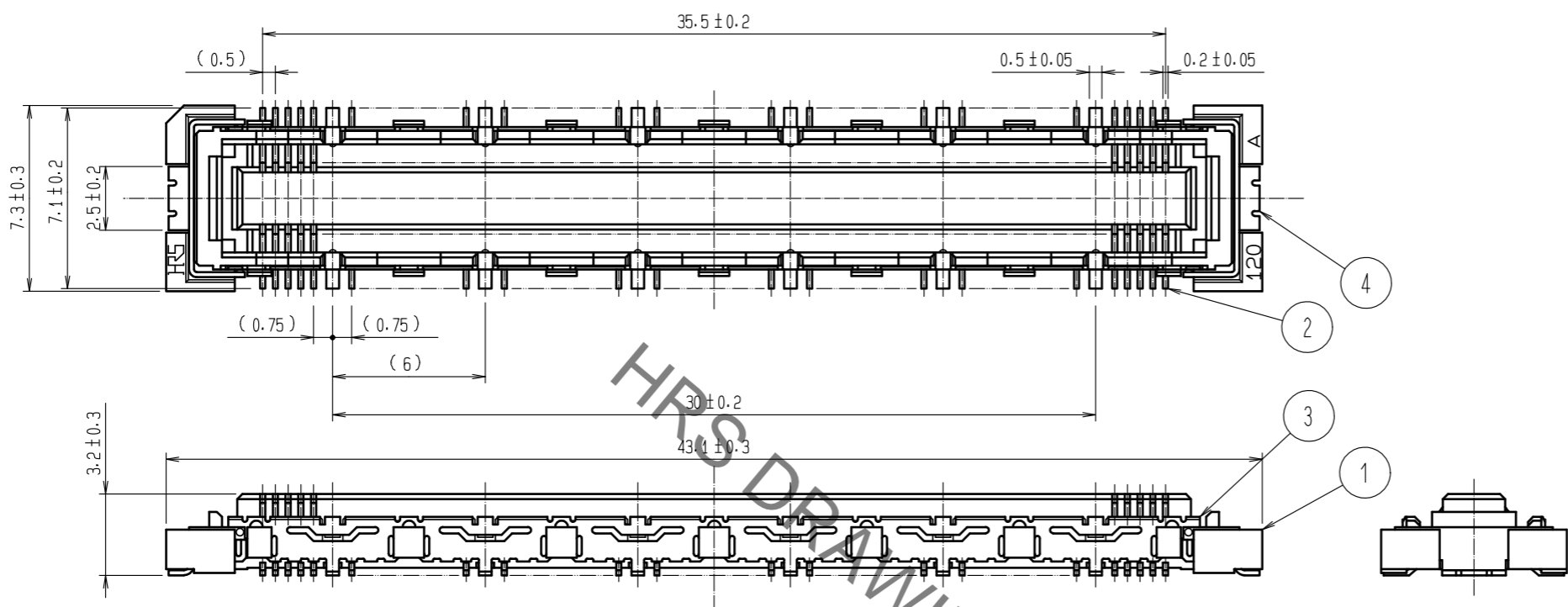
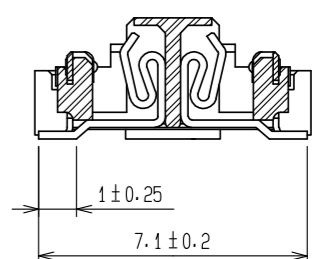


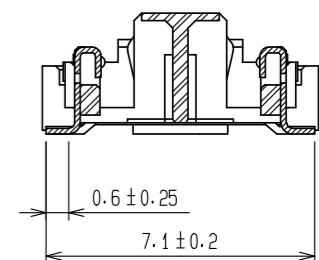
Apr.1.2023 Copyright 2023 HIROSE ELECTRIC CO., LTD. All Rights Reserved.  
 In case of consideration for using Automotive equipment / device which demand high reliability, kindly contact our sales window correspondents.



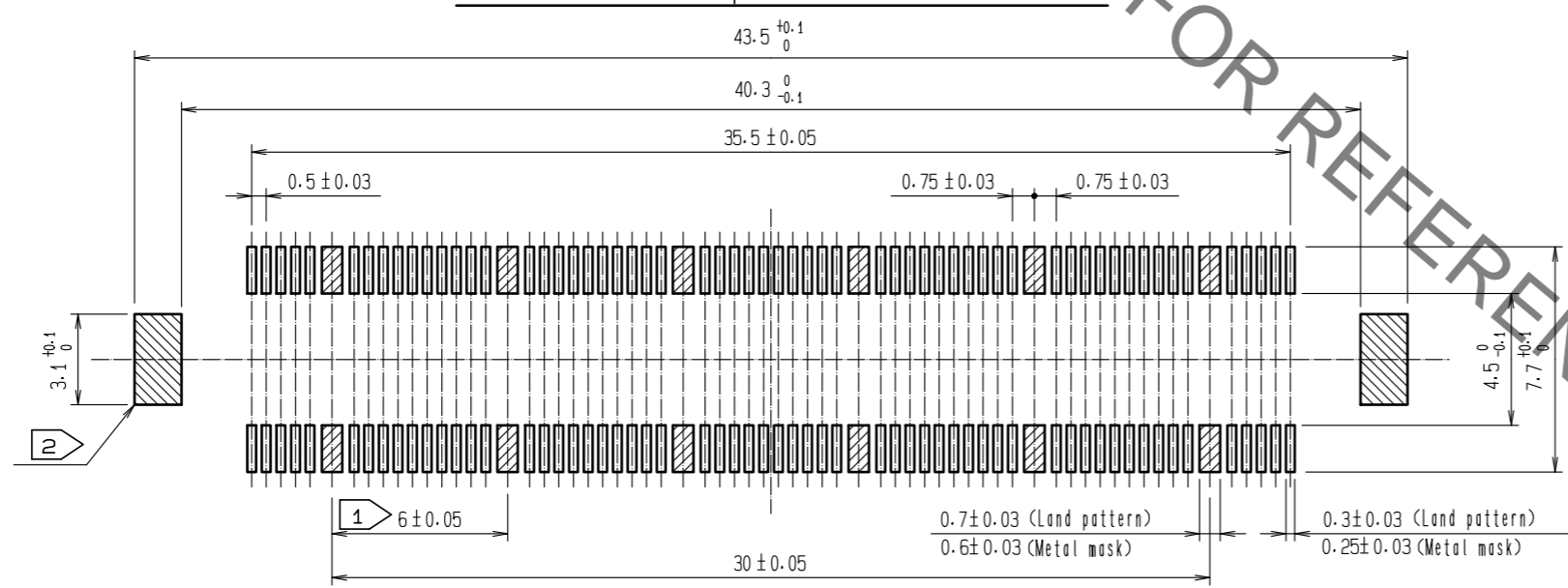
Cross cut section - signal (5:1)



Cross cut section - ground (5:1)



Recommended land pattern dimension of PCB

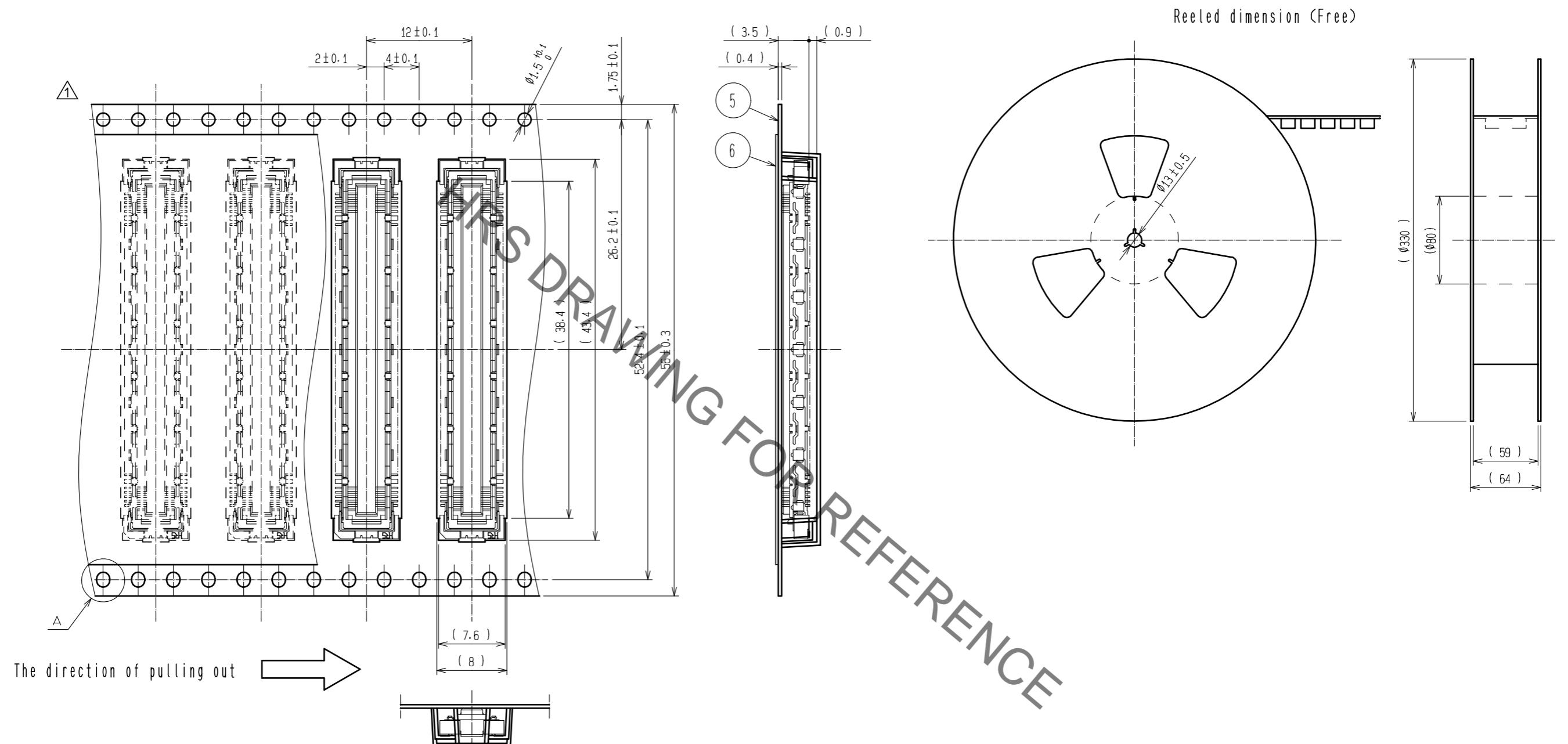


- Notes
- 1 12 hatched parts : ground circuit.
  - 2 2 hatched parts : ground circuit.
  - 3 SMT Lead - coplanarity : 0.1 max.
  - 4 This product has no polarity to pattern for mounting.
  - 5 Emboss carrier tape package is applied on this product. Please refer to the sheet 2/2 for the details.
  - 6 The dimensions in parentheses are for reference.

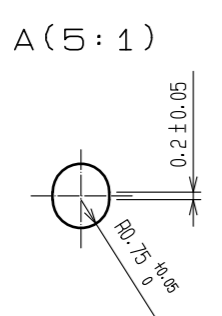
2	Phosphor blonze	Contact area : Gold 0.1 μm min	6	Polyester	(Top cover tape)		
		Lead area : Gold 0.05 μm min	5	Polyethylene	(Emboss carrier tape)		
		Under plating : Nickel 1 μm min	4	Phosphor blonze	Tin - plating		
1	LCP	Beige UL94V-0	3	Phosphor blonze	Tin - plating		
NO.	MATERIAL	FINISH . REMARKS	NO.	MATERIAL	FINISH . REMARKS		
UNITS mm		SCALE 4 : 1	COUNT 1	DESCRIPTION OF REVISIONS DIS-F-00011032	DESIGNED MT. ITANO	CHECKED HT. YAMAGUCHI	DATE 20211007
<b>HRS</b> HIROSE ELECTRIC CO., LTD.		APPROVED : HS. OKAWA	20050903	DRAWING NO. EDC3-151982-21			
		CHECKED : HS. OZAWA	20050902	PART NO. FX10B-120S/12-SV(C91)			
		DESIGNED : TH. NODA	20050902	CODE NO. CL0570-0223-7-91			
		DRAWN : TH. NODA	20050902				

Apr.1.2023 Copyright 2023 HIROSE ELECTRIC CO., LTD. All Rights Reserved.  
 In case of consideration for using Automotive equipment / device which demand high reliability, kindly contact our sales window correspondents.

Drawing for packing (2:1)



The direction of pulling out



- Notes
- 7 1 reel : 1,000 connectors.
  - 8 Minimum 10 compartments from both reel ends remain empty.
  - 9 This product has no polavity to tape and reel packaging.
  - 10 The dimensions in parentheses are for reference.

<b>HRS</b>	DRAWING NO.	EDC3-151982-21
	PART NO.	FX10B-120S/12-SV(91)
	CODE NO.	CL0570-0223-7-91
		2/2