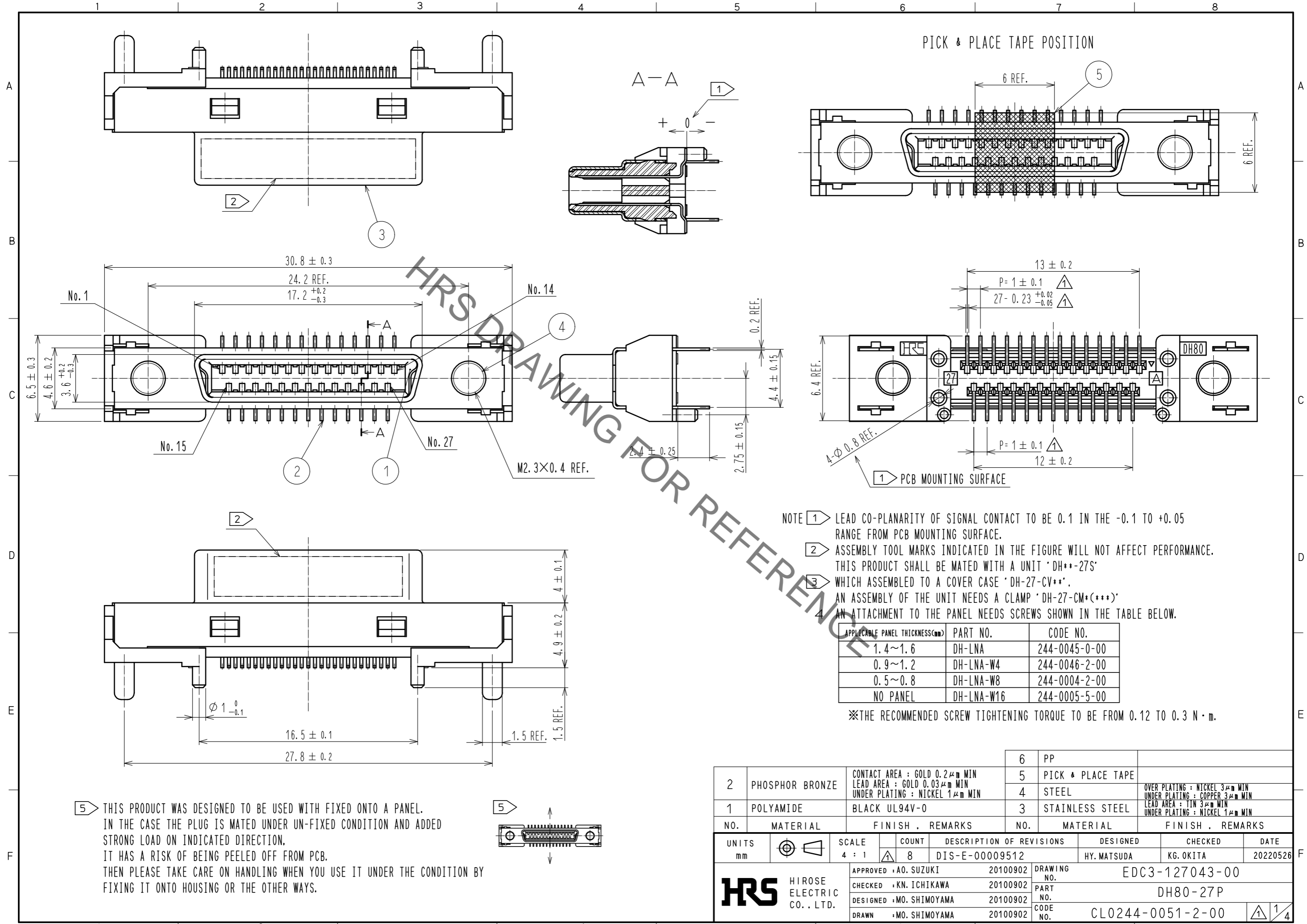


Apr.1.2023 Copyright 2023 HIROSE ELECTRIC CO., LTD. All Rights Reserved.
 In case of consideration for using Automotive equipment / device which demand high reliability, kindly contact our sales window correspondents.



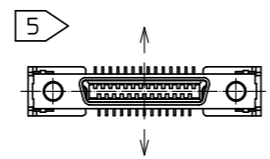
HRS DRAWING FOR REFERENCE

- NOTE
- 1 LEAD CO-PLANARITY OF SIGNAL CONTACT TO BE 0.1 IN THE -0.1 TO +0.05 RANGE FROM PCB MOUNTING SURFACE.
 - 2 ASSEMBLY TOOL MARKS INDICATED IN THE FIGURE WILL NOT AFFECT PERFORMANCE. THIS PRODUCT SHALL BE MATED WITH A UNIT 'DH** -27S' WHICH ASSEMBLED TO A COVER CASE 'DH-27-CV**'. AN ASSEMBLY OF THE UNIT NEEDS A CLAMP 'DH-27-CM*(***)' AN ATTACHMENT TO THE PANEL NEEDS SCREWS SHOWN IN THE TABLE BELOW.
 - 3
 - 4

APPLICABLE PANEL THICKNESS(mm)	PART NO.	CODE NO.
1.4~1.6	DH-LNA	244-0045-0-00
0.9~1.2	DH-LNA-W4	244-0046-2-00
0.5~0.8	DH-LNA-W8	244-0004-2-00
NO PANEL	DH-LNA-W16	244-0005-5-00

※THE RECOMMENDED SCREW TIGHTENING TORQUE TO BE FROM 0.12 TO 0.3 N · m.

5 THIS PRODUCT WAS DESIGNED TO BE USED WITH FIXED ONTO A PANEL. IN THE CASE THE PLUG IS MATED UNDER UN-FIXED CONDITION AND ADDED STRONG LOAD ON INDICATED DIRECTION. IT HAS A RISK OF BEING PEELED OFF FROM PCB. THEN PLEASE TAKE CARE ON HANDLING WHEN YOU USE IT UNDER THE CONDITION BY FIXING IT ONTO HOUSING OR THE OTHER WAYS.

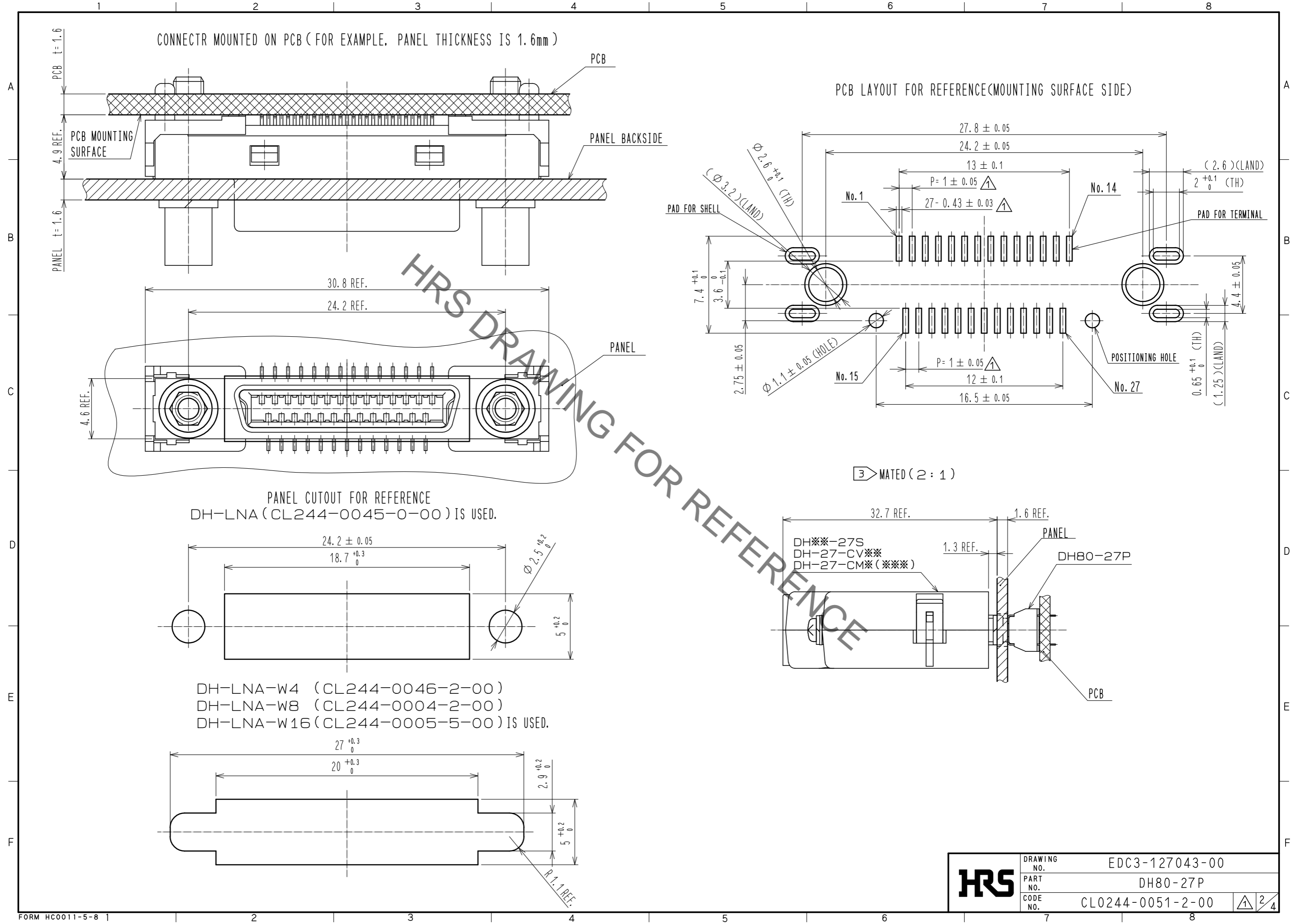


NO.	MATERIAL	FINISH . REMARKS	NO.	MATERIAL	FINISH . REMARKS
2	PHOSPHOR BRONZE	CONTACT AREA : GOLD 0.2μm MIN LEAD AREA : GOLD 0.03μm MIN UNDER PLATING : NICKEL 1μm MIN	6	PP	
1	POLYAMIDE	BLACK UL94V-0	5	PICK & PLACE TAPE	
			4	STEEL	OVER PLATING : NICKEL 3μm MIN UNDER PLATING : COPPER 3μm MIN
			3	STAINLESS STEEL	LEAD AREA : TIN 3μm MIN UNDER PLATING : NICKEL 1μm MIN

UNITS	SCALE	COUNT	DESCRIPTION OF REVISIONS	DESIGNED	CHECKED	DATE
mm	4 : 1	8	DIS-E-00009512	HY. MATSUDA	KG. OKITA	20220526

APPROVED	20100902	DRAWING NO.	EDC3-127043-00
MO. SUZUKI		PART NO.	DH80-27P
KN. ICHIKAWA		CODE NO.	CL0244-0051-2-00
MO. SHIMOYAMA			
MO. SHIMOYAMA			

Apr.1.2023 Copyright 2023 HIROSE ELECTRIC CO., LTD. All Rights Reserved.
 In case of consideration for using Automotive equipment / device which demand high reliability, kindly contact our sales window correspondents.



CONNECTR MOUNTED ON PCB (FOR EXAMPLE, PANEL THICKNESS IS 1.6mm)

PCB LAYOUT FOR REFERENCE (MOUNTING SURFACE SIDE)

PANEL CUTOUT FOR REFERENCE
 DH-LNA (CL244-0045-0-00) IS USED.

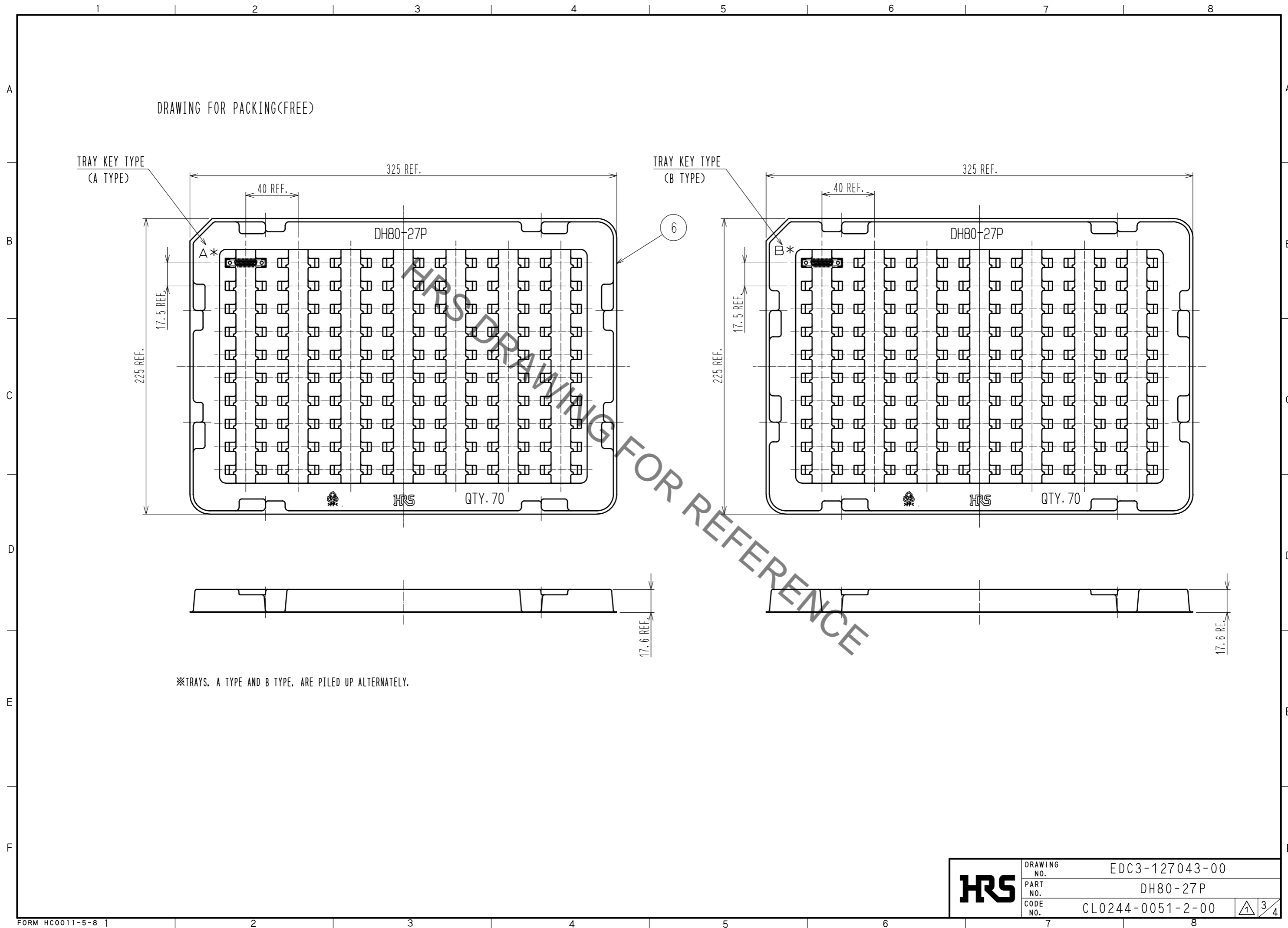
DH-LNA-W4 (CL244-0046-2-00)
 DH-LNA-W8 (CL244-0004-2-00)
 DH-LNA-W16 (CL244-0005-5-00) IS USED.

DH**-27S
 DH-27-CV**
 DH-27-CM** (***)



DRAWING NO.	EDC3-127043-00
PART NO.	DH80-27P
CODE NO.	CL0244-0051-2-00

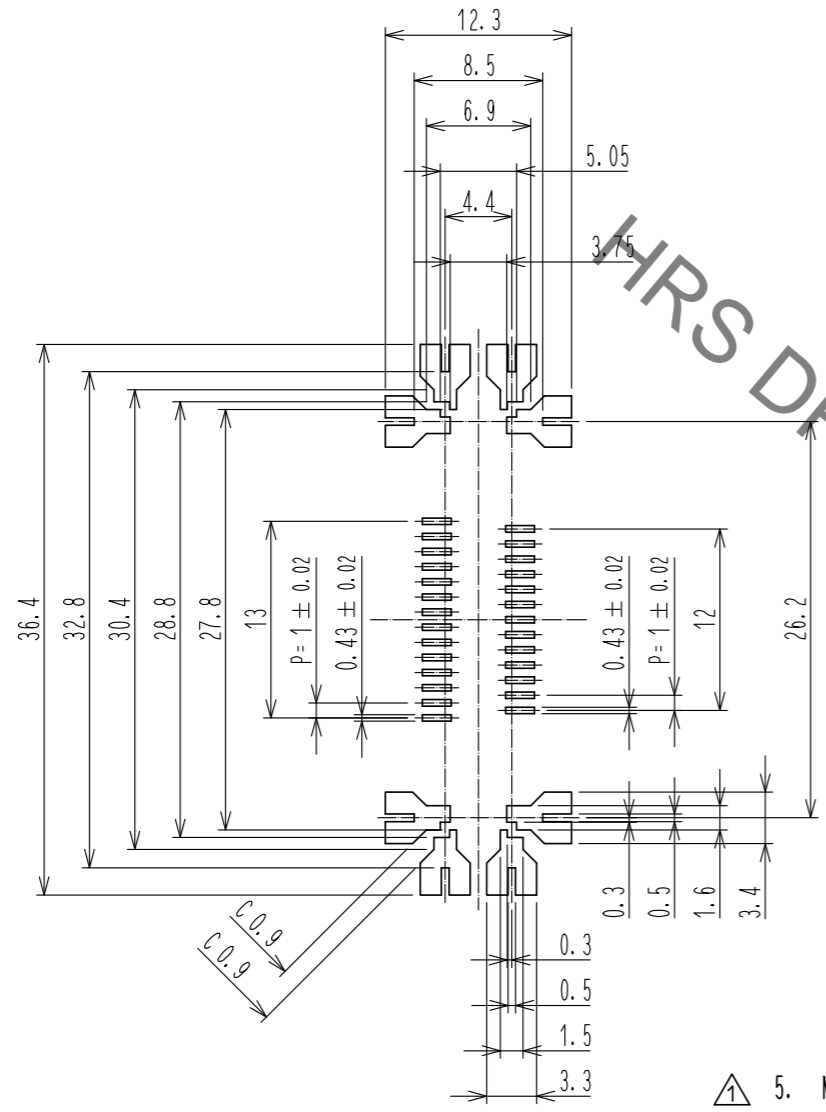
Apr.1.2023 Copyright 2023 HIROSE ELECTRIC CO., LTD. All Rights Reserved.
In case of consideration for using Automotive equipment / device which demand high reliability, kindly contact our sales window correspondents.



HRS	DRAWING NO.	EDC3-127043-00
	PART NO.	DH80-27P
	CODE NO.	CL0244-0051-2-00
		3/4

Apr.1.2023 Copyright 2023 HIROSE ELECTRIC CO., LTD. All Rights Reserved.
 In case of consideration for using Automotive equipment / device which demand high reliability, kindly contact our sales window correspondents.

△ REFERENCE METAL MASK LAYOUT(2:1)
 (t=0.15)



GENERAL TOLERANCE IS ±0.05

- △ 5. Metal mask dimensions of the drawings described, are reference dimensions for 0.15 mm thickness metal mask.
 Change the metal mask dimensions by thickness of the metal mask, thickness of PCB, component of solder paste and mounting conditions.
 Change the metal mask dimensions in case of mounting DH***P in parallel.
 Change the metal mask dimensions, if there are other mounting parts or implementation pattern around the portion of mounting position of DH***P.

HRS	DRAWING NO.	EDC3-127043-00
	PART NO.	DH80-27P
	CODE NO.	CL0244-0051-2-00
		△ 4/4