



External insulated cross-connector, No. of poles: 3, Mounting type: Plug in, Width: 16.9 mm, Rated current: 27 A; Colour: Yellow

**RAL:** 1026

### Business data

Article number	2065.0
Article name	AQI 3/6/17 YE
GTIN (EAN)	4044211048716
Packaging unit	50
Quantity unit	PC
Weight per piece (not including packaging)	2.04 g
Weight per piece (including packaging)	2.05 g
Unit of weight	G
Customs number	85389099
Country of origin	DE
Product description	External insulated cross-connector
Colour	Yellow

---

### Technical data

---

#### Dimensions

Width	16.9 mm
-------	---------

Pitch size	6 mm
------------	------

#### Ratings

Rated current	27 A
---------------	------

Contamination degree	3
----------------------	---

#### Connection data

No. of poles	3
--------------	---

#### Materials

Material	Copper
----------	--------

Surface	Tin-plated
---------	------------

Insulation housing	Polyamide 6.6
--------------------	---------------

Flammability class UL 94	V-2
--------------------------	-----

Working temperature, min.	-40 °C
---------------------------	--------

Working temperature, max.	105 °C
---------------------------	--------

#### Further technical data

Mounting type	Plug in
---------------	---------

Insulation available	✓
----------------------	---

Touch protection is available	✓
-------------------------------	---

Number of bridged terminals	3
-----------------------------	---

#### Environmental Product Compliance

REACH Conform	yes
---------------	-----

REACH Reference date	2023-01-17
----------------------	------------

REACH Candidate Substance Note	No
--------------------------------	----

RoHS Conform	yes
--------------	-----

---

### Media

---

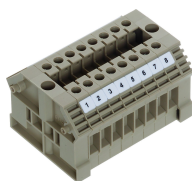
### Accessories

#### ##INVERSE##CONTA-CONNECT



Feed-through terminal/block variant, Screw connection, Mounting type: Mounting rail TS 35/7.5 and TS 32, Rated cross-section: 4 mm<sup>2</sup>, Colour: Beige

Article number	Article name	GTIN (EAN)	Packaging unit
<u>1003.2</u>	KBL 2,5-4 beids. Bez-g (1-9) BG	4044211000721	10 ST



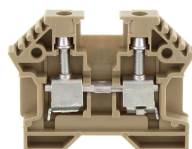
Feed-through terminal for direct mount/block variant, Screw connection, Mounting type: Mounting surface, Rated cross-section: 4 mm<sup>2</sup>, Colour: Beige

Article number	Article name	GTIN (EAN)	Packaging unit
<u>1385.2</u>	KBL 2,5-4/10-D BG	4044211044268	10



Feed-through terminal/block variant, Screw connection, Mounting type: Mounting rail TS 35/7.5 and TS 32, Rated cross-section: 4 mm<sup>2</sup>, Colour: Beige

Article number	Article name	GTIN (EAN)	Packaging unit
<u>1002.2</u>	KBL 2,5-4 BG	4044211000516	10 ST



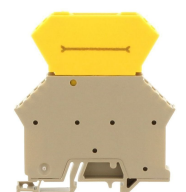
Feed-through terminal for direct mount/block variant, Screw connection, Mounting type: Mounting surface, Rated cross-section: 4 mm<sup>2</sup>, Width: 6 mm, Colour: Beige

Article number	Article name	GTIN (EAN)	Packaging unit
<u>1388.2</u>	KBL 2,5-4-D BG	4044211044299	100



Disconnect terminal, Screw connection, Mounting type: Mounting rail TS 15/5.5, Rated cross-section: 2.5 mm<sup>2</sup>, Width: 6 mm, Colour: Beige

Article number	Article name	GTIN (EAN)	Packaging unit
<u>1392.2</u>	TRK 1,5/15 BG	4044211044374	100



Disconnect terminal, Screw connection, Mounting type: Mounting rail TS 15/5.5, Rated cross-section: 2.5 mm<sup>2</sup>, Width: 6 mm, Colour: Beige

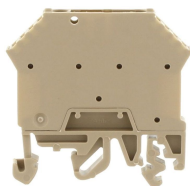
Article number	Article name	GTIN (EAN)	Packaging unit
<u>1396.2</u>	TRK 1,5/15/DS BG	4044211044435	50 ST

### ##INVERSE##CONTA-CONNECT



Disconnect terminal, Screw connection, Mounting type: Mounting rail TS 15/5.5, Rated cross-section: 2.5 mm<sup>2</sup>, Width: 6 mm, Colour: Beige

Article number	Article name	GTIN (EAN)	Packaging unit
<u>1397.2</u>	TRK 1,5/15/STB/DS BG	4044211044442	50 ST



Disconnect terminal, Screw connection, Mounting type: Mounting rail TS 35/7.5 and TS 32, Rated cross-section: 2.5 mm<sup>2</sup>, Width: 6 mm, Colour: Beige

Article number	Article name	GTIN (EAN)	Packaging unit
<u>1399.2</u>	TRK 1,5/STB BG	4044211044466	100 ST



Disconnect terminal, Screw connection, Mounting type: Mounting rail TS 35/7.5 and TS 32, Rated cross-section: 2.5 mm<sup>2</sup>, Width: 6 mm, Colour: Beige

Article number	Article name	GTIN (EAN)	Packaging unit
<u>1390.2</u>	TRK 1,5 BG	4044211044312	100



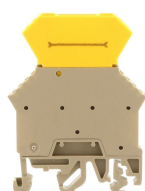
Disconnect terminal, Screw connection, Mounting type: Mounting rail TS 35/7.5 and TS 32, Rated cross-section: 2.5 mm<sup>2</sup>, Width: 6 mm, Colour: Beige

Article number	Article name	GTIN (EAN)	Packaging unit
<u>1391.2</u>	TRK 1,5/STB BG	4044211044350	100



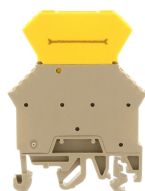
Disconnect terminal, Screw connection, Mounting type: Mounting rail TS 15/5.5, Rated cross-section: 2.5 mm<sup>2</sup>, Width: 6 mm, Colour: Beige

Article number	Article name	GTIN (EAN)	Packaging unit
<u>1393.2</u>	TRK 1,5/15/STB BG	4044211044398	100



Disconnect terminal, Screw connection, Mounting type: Mounting rail TS 35/7.5 and TS 32, Rated cross-section: 2.5 mm<sup>2</sup>, Width: 6 mm, Colour: Beige

Article number	Article name	GTIN (EAN)	Packaging unit
<u>1394.2</u>	TRK 1,5/DS BG	4044211044411	50 ST



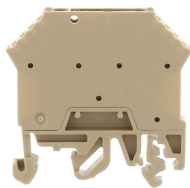
Disconnect terminal, Screw connection, Mounting type: Mounting rail TS 35/7.5 and TS 32, Rated cross-section: 2.5 mm<sup>2</sup>, Width: 6 mm, Colour: Beige

Article number	Article name	GTIN (EAN)	Packaging unit
<u>1395.2</u>	TRK 1,5/STB/DS BG	4044211044428	50 ST

---

### ##INVERSE##CONTA-CONNECT

---



Disconnect terminal, Screw connection, Mounting type: Mounting rail TS 35/7.5 and TS 32, Rated cross-section: 2.5 mm<sup>2</sup>, Width: 6 mm, Colour: Beige

Article number	Article name	GTIN (EAN)	Packaging unit
<u>1398.2</u>	TRK 1,5 BG	4044211044459	100 ST

---