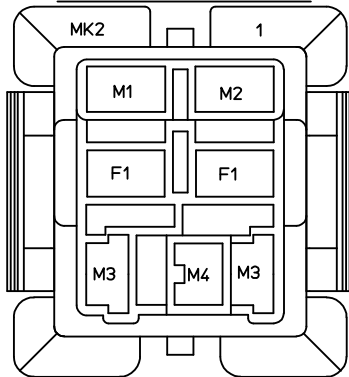
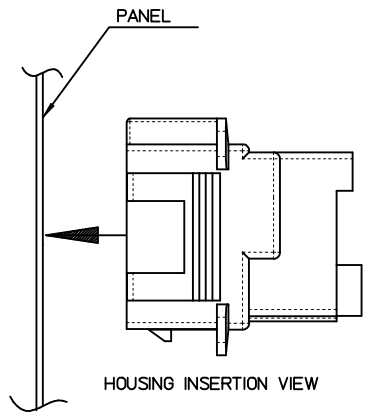
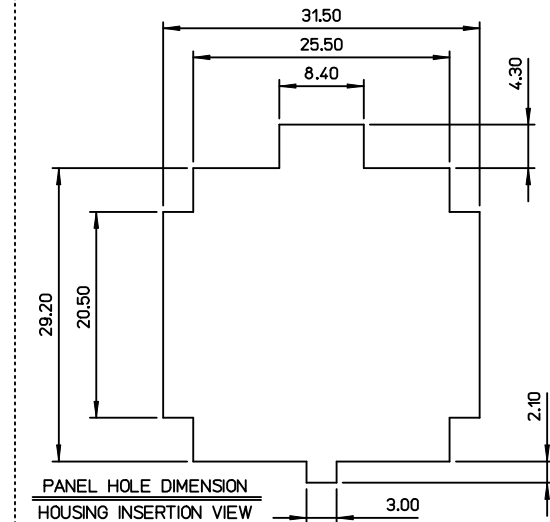
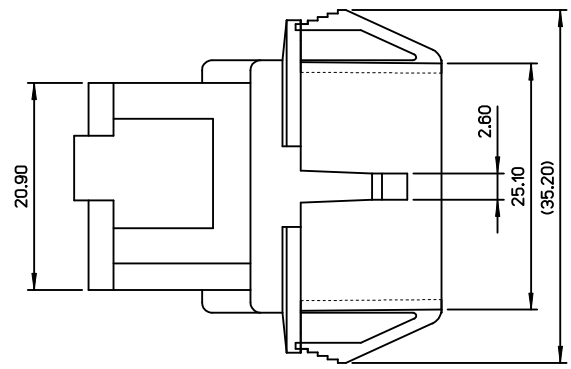
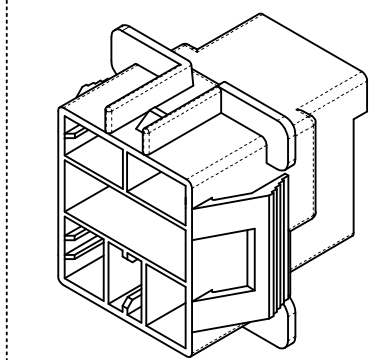
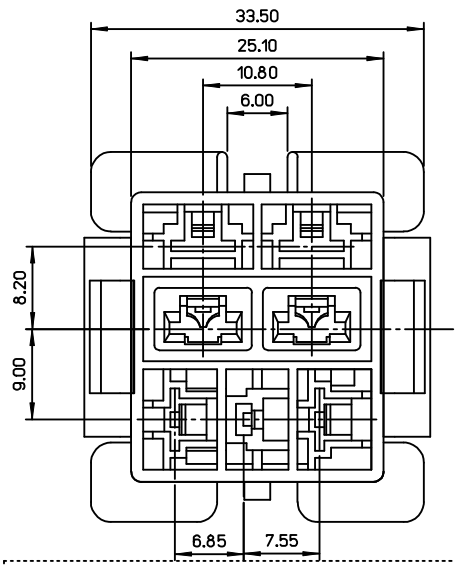
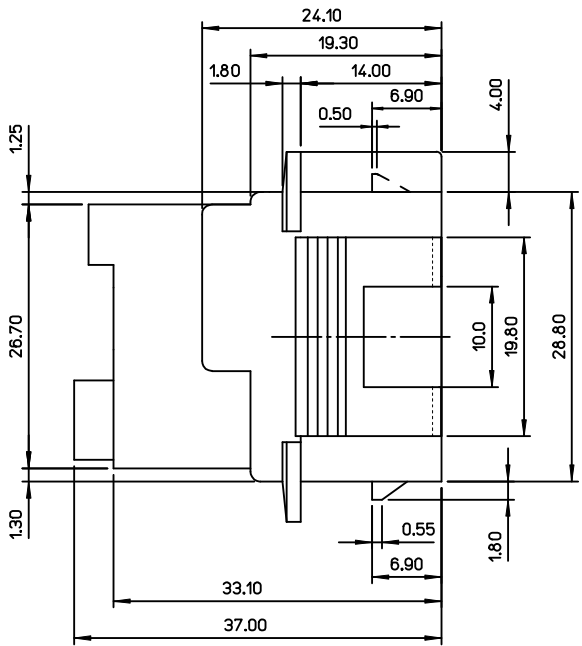


TERMINAL PATTERN



- M1 TERMINAL : 35453-9*02
- M2 TERMINAL : 35452-9*02
- M3 TERMINAL : 35725-1810/1910/3010
- M4 TERMINAL : 35765-0110/0210
- F1 TERMINAL : 35725-5*10
- M = MALE TERMINAL
- F = FEMALE TERMINAL



NOTES

1. MATERIAL : PET/PC, NO GLASS FILLED, UL94V-0; COLOR : NATURAL
2. PRODUCT SPECIFICATION : PS-35546-001
3. PACKING SPECIFICATION : PK-35546-001
4. MATED HOUSING : 35547-0309
35547-0409

REVISED	IEC NO: KOR2015-0152	2015/06/23
	DRWN: SCHONG03	2015/06/23
	CHKD: SHCHU	2015/06/23
	APPR: YSKIM02	2015/06/30

QUALITY SYMBOLS	$\nabla = 0$
	$\triangle = 0$

GENERAL TOLERANCES (UNLESS SPECIFIED)	mm	INCH
4 PLACES	± ---	± ---
3 PLACES	± ---	± ---
2 PLACES	± 0.30	± ---
1 PLACE	± 0.30	± ---
0 PLACE	± ---	± ---
ANGULAR ± 3 °		
DRAFT WHERE APPLICABLE MUST REMAIN WITHIN DIMENSIONS		

DIMENSION STYLE		SCALE	DESIGN UNITS	THIRD ANGLE PROJECTION
MM ONLY		2:1	METRIC	
DRAWN BY	DATE	TITLE		
JB. JIN	2012/10/25	.250 MULTI W-T-W CONN. RECEPTACLE HOUSING 7P (FOR GWIT)		
CHECKED BY	DATE	molex		
SH. CHU	2012/10/25			
APPROVED BY	DATE	DOCUMENT NO.		
YSKIM02	2012/12/27	SD-35546-003		
MATERIAL NO.		SHEET NO.		
355460709		1 OF 1		

THIS DRAWING CONTAINS INFORMATION THAT IS PROPRIETARY TO MOLEX INCORPORATED AND SHOULD NOT BE USED WITHOUT WRITTEN PERMISSION