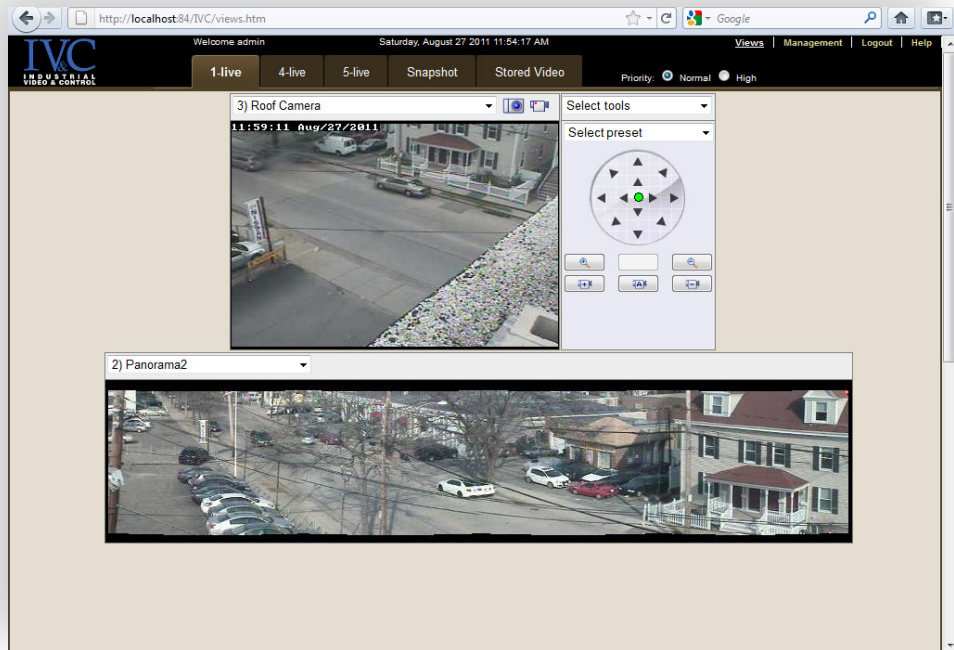


# Relay Server Software

- Scalable to support hundreds of cameras
- Point & click camera access and control
- Bandwidth management
- Programmable user privileges and priorities
- Connect via fiber, copper, satellite, or encrypted wireless



## Robust IP video management software

IVC's Relay Server software is the camera management and control center of our video system. This enterprise application allows for a full range of IP camera control and viewing over a LAN, WAN, VPN or the Internet. Live and prerecorded video can be viewed and controlled from virtually anywhere. Tools are provided to create named preset positions and panorama controls for PTZ cameras.

This enterprise-class software is fully scalable, capable of supporting hundreds of cameras simultaneously.

It is browser-based and provides API's and ActiveX controls to integrate video into SCADA and other applications.

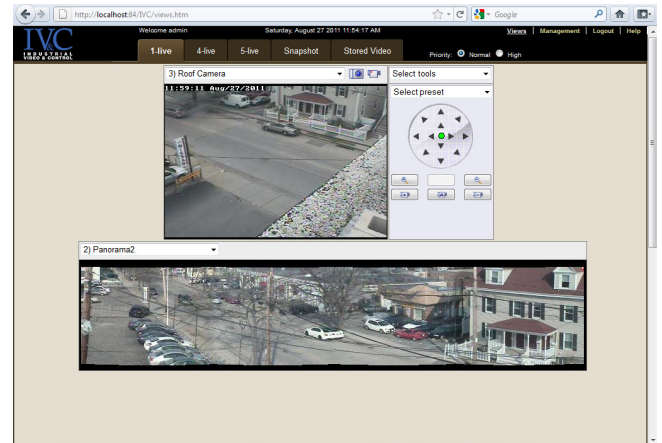
The Relay Server software is used to define and manage networked IP cameras as well as system-wide attributes like the server IP address, storage space available and frame rates stored. Access to cameras and system functions are controlled through privileges and priorities assigned to each user by the system administrator.

# Easy to Use Interface for Remote Viewing and Management

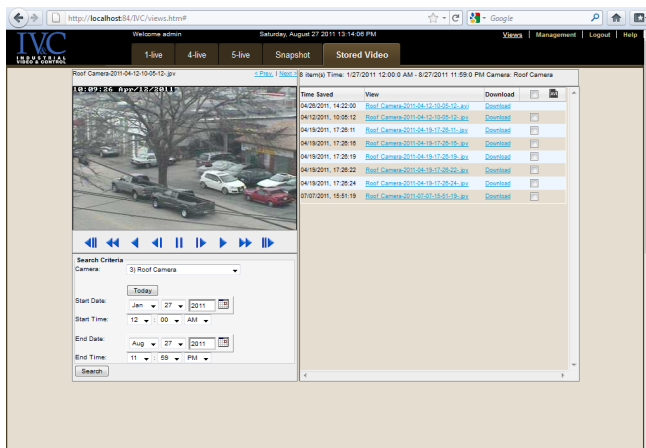
IVC's Relay Server is a web server that provides users with single IP address access to a large network of IP cameras. The camera network can be configured, managed, controlled, and viewed remotely.

## Key Features:

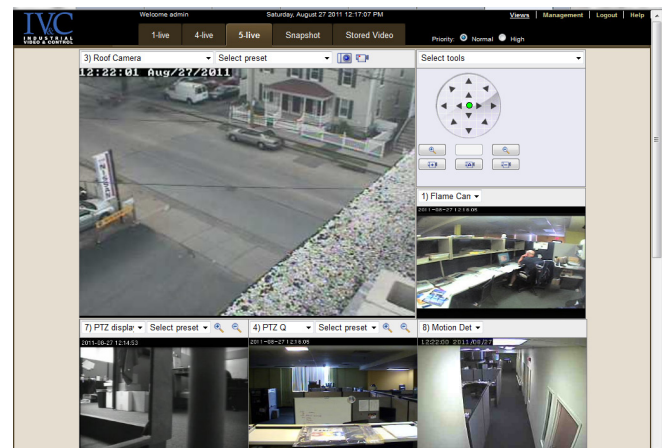
- Quick start configuration
- Remote viewing of live and stored video
- Remote control of PTZ cameras
- Single point & click PTZ movement with panoramas
- Configurable button controls
- Named presets
- Bandwidth control
- Storage management
- Slaved PTZ controls
- APIs to integrate video and controls into SCADA HMI
- Integrated text-messaging system



Single camera view with panorama PTZ control



Easy access to recorded video and snapshots



Multiple live view options

The Relay Server provides system administrators with a variety of tools to remotely manage a large network of IP video cameras.

- Create privilege groups and users
- Configure connected cameras
- Create presets for PTZ cameras
- Create panoramas for PTZ cameras
- Define storage parameters
- Create custom buttons
- Move PTZ cameras
- Take snapshots from cameras
- Record video clips from cameras
- Display saved snapshots
- Play back recorded video
- Manage archived video and snapshot files
- Define bandwidth management parameters

# Sophisticated User Management

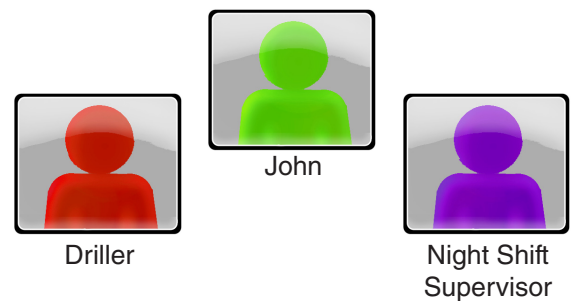
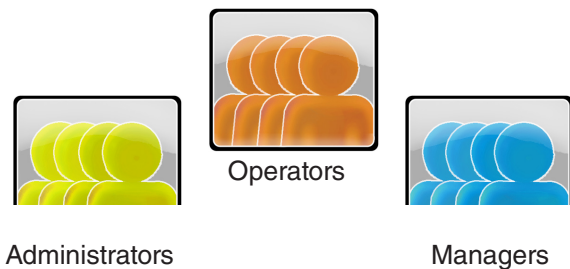
For larger applications that may require different levels of access to video, the Relay Server provides the option to enable its configurable security system. For instance, guards and security personnel would likely have priority access to video from security cameras but have lower priority access to cameras that are being used for process monitoring. For the latter case, plant or equipment operators might have high priority access to these cameras. Management may want casual access to the video system wide, while you may want to restrict other users to specific cameras. IVC's Relay Server includes a flexible, configurable user management system that can handle these and other scenarios.

## Define Privilege Groups

- Assign access rights to cameras
- Assign camera control & viewing rights
- Assign administrative rights
- Use or modify pre-defined groups or create your own
- Create as many hierarchical groups as needed

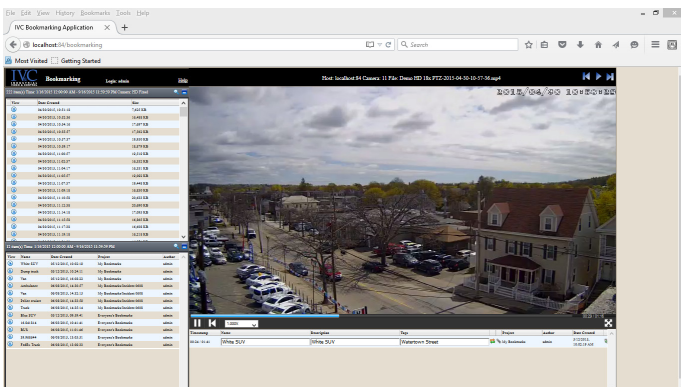
## Define User Accounts

- Assign user to privilege group
- Provide user login
- Assign normal and override priorities
- Create as many users as needed
- Create users as individuals or functions

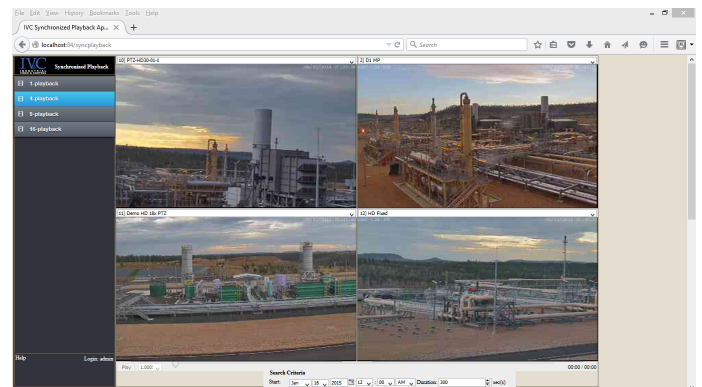


# Comprehensive Video Review Tools

Forensic analysis of recorded video is a key function of most video surveillance and monitoring systems. IVC's Relay Server includes tools to make this process more productive and easier to manage.



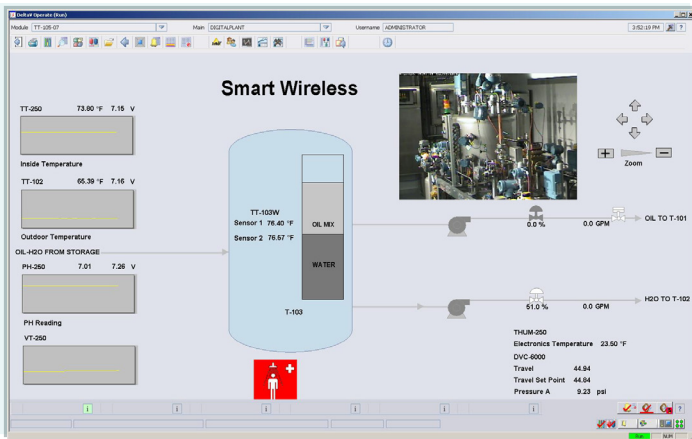
Frame bookmarking and project management



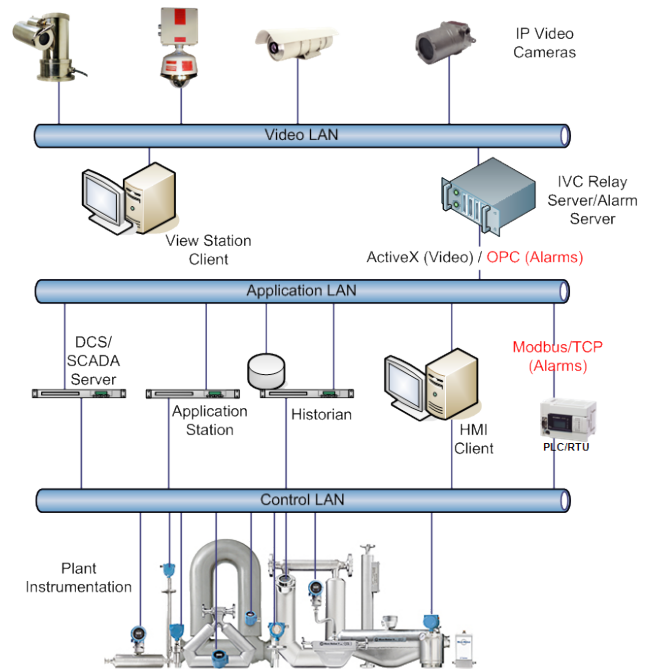
Synchronized multi-segment replay

# SCADA Integration

As illustrated in the diagram below, IVC's Relay Server software serves video from a network of IP cameras to a variety of clients. Through APIs provided with the product, you can easily integrate video and camera controls into SCADA HMI screens. Users of DeltaV, Wonderware, RSVIEW, FactoryTalk, Citect, and other popular SCADA applications have used IVC's software and industrial cameras to add video monitoring to their operators' control screens.



SCADA HMI with integrated video & camera controls



## ► system requirements

Typical requirements for a 24-camera system:

<b>CPU</b>	Intel i7
<b>RAM</b>	4 Gbytes DDR memory
<b>HDD*</b>	2 Tbytes
<b>Ethernet</b>	10/100/1000Base-TX
<b>Video Card</b>	AGP card w/ 1 GBytes RAM
<b>Operating System**</b>	Windows 10 Professional

\*Video storage needs vary depending on video resolution, frame rate, length of recording time, and redundancy requirements. Contact your local IVC representative to determine your specific requirements.

\*\*Windows Server 2012 is recommended for larger video systems or systems with storage requirements that exceed 2 Tbytes.

## ► ordering information

To simplify your installation, IVC offers computers pre-configured with the appropriate Relay Server Software. Ask your IVC representative about this option.

Part Number	Description
<b>RSS-4001</b>	Provides single IP access and control for one IP addressable camera.
<b>RSS-4004</b>	Provides single IP access and control for up to four IP addressable cameras.
<b>RSS-4008</b>	Provides single IP access and control for up to eight IP addressable cameras.
<b>RSS-4016</b>	Provides single IP access and control for up to 16 IP addressable cameras.
<b>RSS-4024</b>	Provides single IP access and control for up to 24 IP addressable cameras.



330 Nevada St., Newton, MA 02460 [www.ivcco.com](http://www.ivcco.com) 617-467-3059

© 2019, Industrial Video & Control Co. The Industrial Video & Control Co. logo is a registered trademark of Industrial Video & Control Co.. All other company names and products are trademarks or registered trademarks of their respective companies. All information provided is subject to change without notice. 1/10/2019

