



**455 MHz Saw Filter**  
**Part Number: AM455S140**



Parameters Description	Unit	Minimum	Typical	Maximum
Center Frequency (Fo)	MHz	-	455.0	-
Insertion Loss within 452.5 ~ 457.5 MHz	dB	-	1.8	2.8
VSWR within 452.5 ~ 457.5 MHz	-	-	1.4	2.0
<b>Attenuation:</b>				
0.3 ~ 443.0 MHz	dB	25	28	-
462.5 ~ 467.5 MHz	dB	30	50	-
467.5 ~ 1700.0 MHz	dB	25	28	-
1700.0 ~ 2000.0 MHz	dB	20	23	-

Parameters Description	Unit	Minimum	Typical	Maximum
Operation Temperature Range	°C	-30	-	+80
Storage Temperature Range	°C	-40	-	+85
Maximum DC Voltage	V	-	-	0
Maximum Input Power	dBm	-	-	30
Source Impedance (Single Ended) <sub>1</sub>	Ω	-	50	-
Load Impedance (Single Ended) <sub>1</sub>	Ω	-	50	-
Package Size and Type	3.8 x 3.8 x 1.4 mm		P	

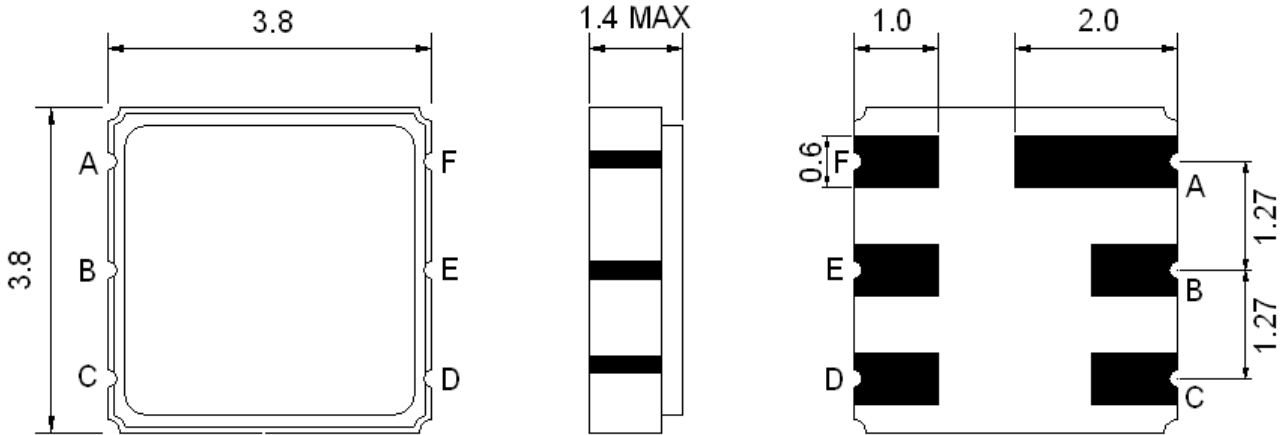


# 455 MHz Saw Filter

## Part Number: AM455S140



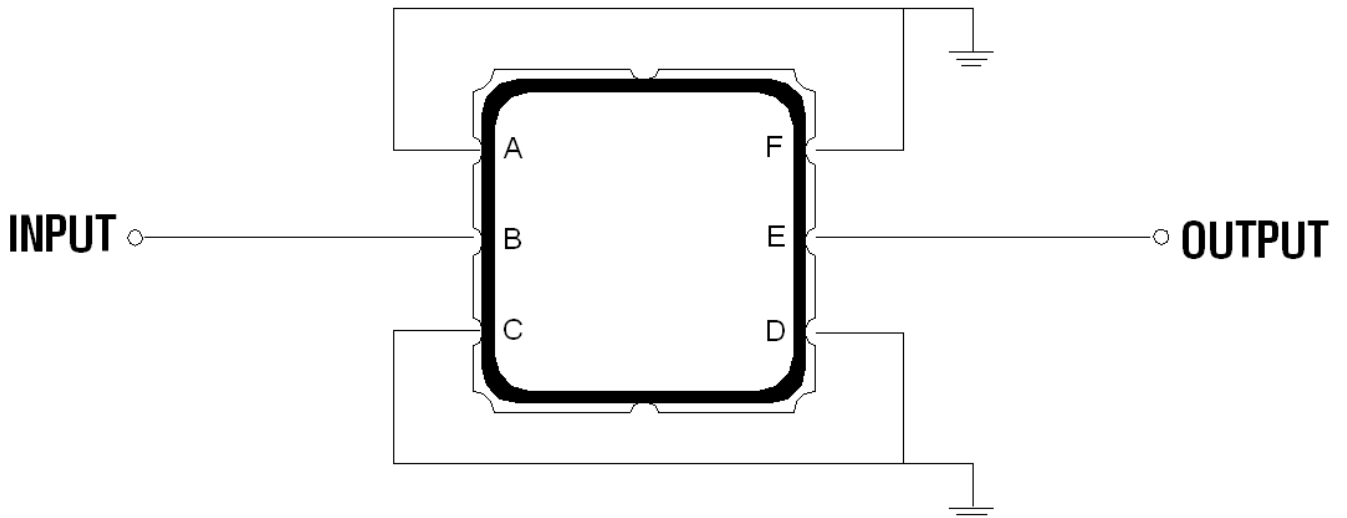
### Outline Drawing:



### Pin Description:

- Ground – A C D F
- Input – B
- Output – E

### Testing Environment:



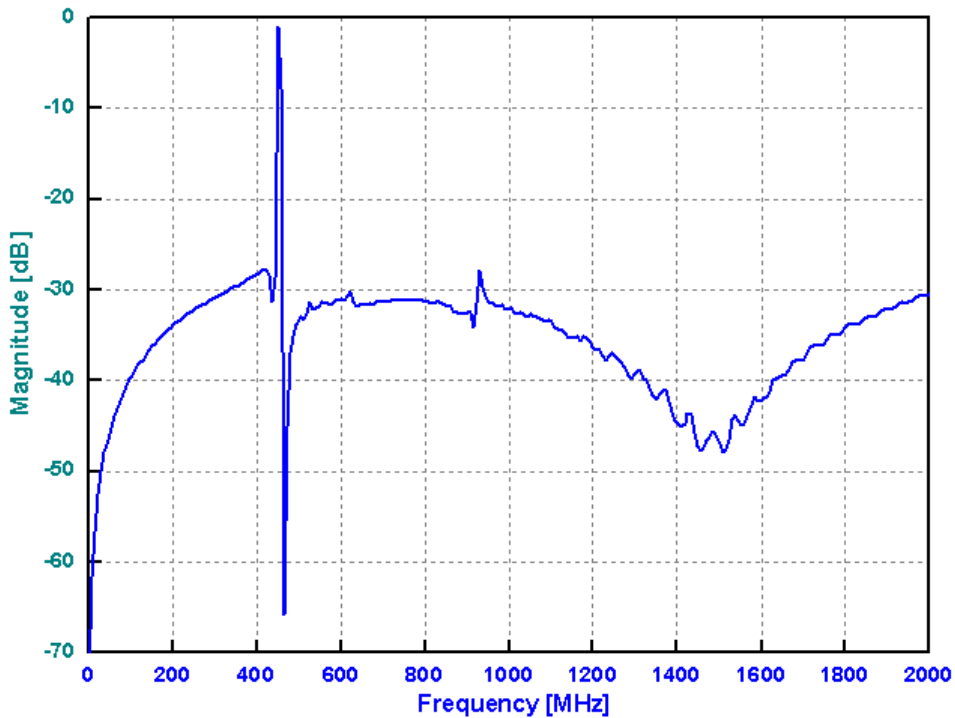
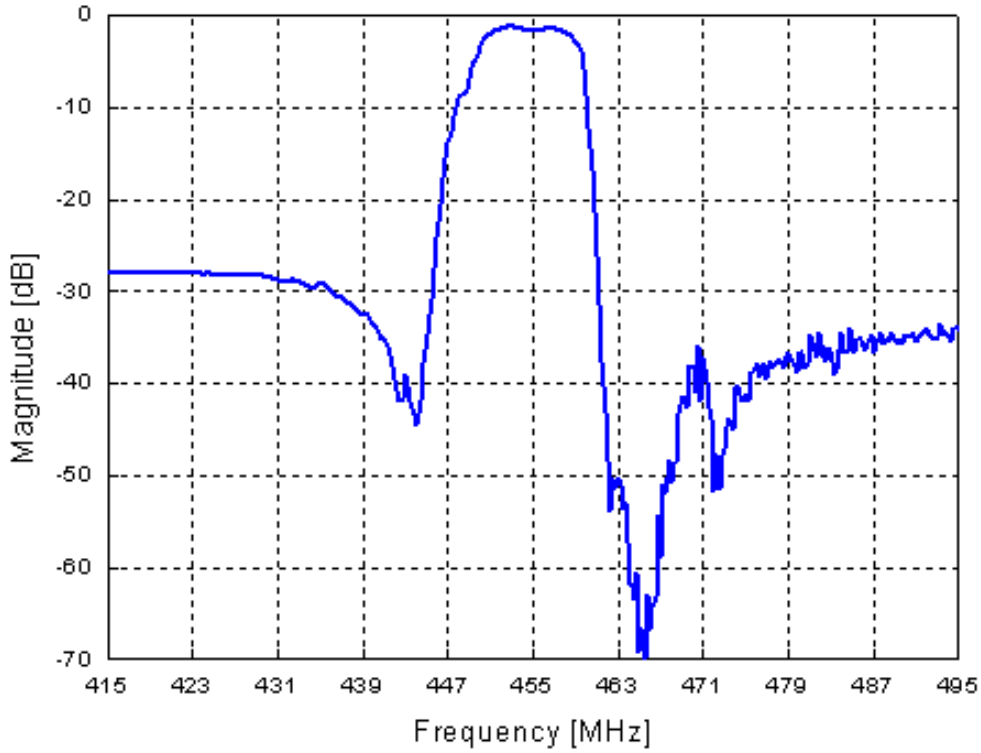


# 455 MHz Saw Filter

## Part Number: AM455S140



### Response Plot:





### VSWR:

