

OMAP-L138/C6748 DSP Experimenter Kit for Universities Status: ACTIVE

TMDSEXPL138-UNV

- [Description/Features](#) [Technical Documents](#) [Support & Community](#) [Order Now](#)

Description

The OMAP-L138/C6748 DSP Experimenter Kit packaged for Universities (TMDSEXPL138-UNV) provides everything academics need to get started with teaching and projects using the TI TMS320C6000 DSP. The TI TMS320C6000 family of DSPs is popular for use in Real-time DSP courses, Signals & Systems courses, labs for DSP theory courses and many applications courses and projects using DSP such as telecommunications. The Experimenter Kit for Universities is a low-cost, flexible development platform for the OMAP-L138 which is a low-power dual core processor based on C6748 DSP plus an ARM926EJ-S 32-bit RISC MPU.

Providing students hands-on real-time DSP experiments using industry standard hardware and software gives a significant advantage over teaching with theory plus simulation alone. This version of the Experimenter Kit along with TI's Code Composer Studio Integrated Development Environment (IDE) making use of the C6748 side of the device gives a complete workstation or project set up for DSP. Full access to documentation, software, teaching materials and textbooks for the TMDSEXPL138-UNV are listed at www.ti.com/EXPL138-UNV.

Contact the [TI University Program](#) to discuss your course and projects we offer support, discounts, in-kind donations and more.

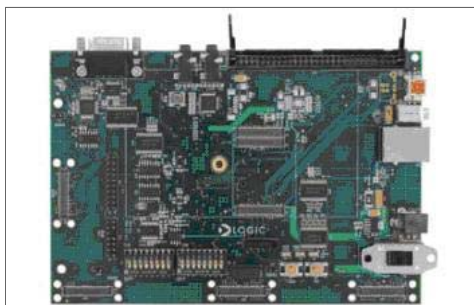
Additional Information

- [OMAP-L138/C6748 DSP Exp. Kit for Universities Wiki/SW & Teaching Materials](#)
- [Side by side comparison of OMAP-L138 eXperimenter kit and EVM](#)
- [TI E2E Community University Program Zone](#)
- [TI University Program Home Page – find resources and benefits for academics](#)

Features

The OMAP-L138/C6748 DSP Experimenter Kit packaged for Universities (TMDSEXPL138-UNV) includes the OMAP-L138 SOM-M1 and application baseboard.

- Texas Instruments OMAP-L138 SOM-M1**
 - SOM included to evaluate the OMAP-L138 processor (with 128 MB Mobile DDR)
- OMAPL138 Baseboard**
 - Standard across all OMAPL138 Zoom Experimenter & EVM platforms
- Expansion**
 - 60-pin LCD header
 - Expansion board connectors
- Audio**
 - Stereo in/out 3.5mm connectors
 - TLV320AIC3106 audio codec
- Network Support**
 - One RJ45 Ethernet connector SATA
 - Serial ATA connector
- PC Card Expansion**
 - MMC/SD card slot
- User Interface**
 - System user button, reset button
 - Boot mode and user DIP switches
- USB**
 - One USB 2.0 high-speed On-the-Go interface
 - One USB 1.1 full-speed host
- Serial Ports**
 - 115.2kbps RS-232 debug serial port
- Debug**
 - Connectors for JTAG interface
 - XDS100 emulation circuit on board w/ USB interface
- Software**
 - Available at www.ti.com/EXPL138-UNV
- Cables**
 - USB A to mini-B cable
 - 5 volt power supply (with Europe, Japan, UK, & US adapters)



TMDSEXPL138-UNV (Courtesy of Logic PD)

Order Now

Part Number	Texas Instruments	Status	Host OS			Current Version	Version Date

TMDSEXPL138-UNV: OMAP-L138/C6748 DSP Experimenter Kit for Universities	TI eStore	ACTIVE	PC	Microsoft XP	v1.0	22 MAR 2012
---	-----------	--------	----	--------------	------	-------------

Technical Documents

TI Wikis (5)

Title	Date
Integra Processors Wiki -- In-depth technical and "how-to" articles, FAQs, etc.	24 Mar 2011
Integra Processors Wiki -- In-depth technical and "how-to" articles, FAQs, etc.	24 Mar 2011
Development Tools, Operating Systems and Embedded Software Wikis - for TI Embedded Processors	08 Aug 2011
Development Tools, Operating Systems and Embedded Software Wikis - for TI Embedded Processors	08 Aug 2011
OMAPL138/C6748 Experimenter Kit for Universities Wiki	22 Mar 2012

Related Products

Name	Part Number	Tool Type
Code Composer Studio (CCStudio) Integrated Development Environment (IDE) v5	CCSTUDIO	Code Composer Studio(TM) IDE
OMAP-L138 Experimenter Kit	TMDSEXPL138	Development Boards/EVMs
OMAP-L138/TMS320C6748 EVM	TMDSEVML138	Development Boards/EVMs

Name	Part Number	Software Type
Linux Software Development Kit (SDK) for OMAP-L138 Processors	LINUXSDK-OMAPL138	Software Development Kit (SDK)
TMS320C6748 SYS/BIOS Software Development Kit (SDK)	BIOSSW-C6748	Software Development Kit (SDK)

Part Number	Name	Product Family
OMAP-L132	C6-Integra DSP+ARM Processor	C6-Integra DSP+ARM Processor
OMAP-L138	C6-Integra DSP+ARM Processor	C6-Integra DSP+ARM Processor
TMS320C6742	Fixed/Floating Point Digital Signal Processor	C6000 High Performance DSP
TMS320C6746	Fixed/Floating Point Digital Signal Processor	C6000 High Performance DSP
TMS320C6748	Fixed/Floating Point Digital Signal Processor	C6000 High Performance DSP

Support and Community

Customer Tags

No Tags are Available for this Part Number

[Create a Tag](#)