

## BPXX Series



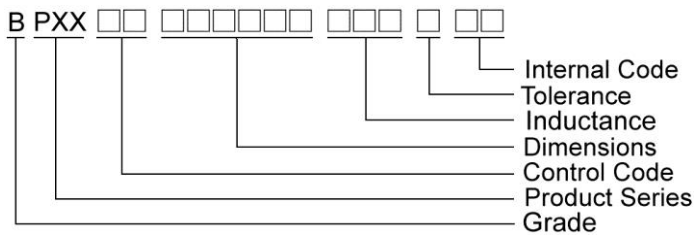
### Features

- RoHS compliant
- Low Rdc and high saturation current for portable DC to DC converter line
- High magnetic shielding construction provides high resolution for EMC protection
- Support lead-free soldering

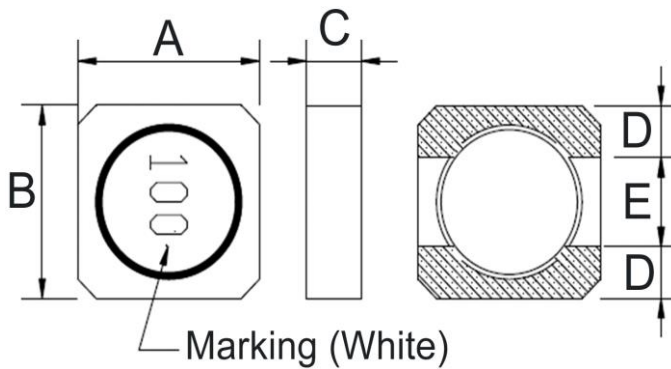
### Applications

- Notebook PC
- Set top box
- LCD TV
- LCD displays
- Portable communication device
- DC/DC converters
- SSD
- Networking

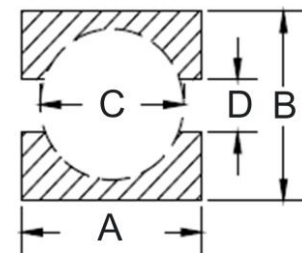
### Product Identification



### Shape and Dimensions



### Recommended Pattern

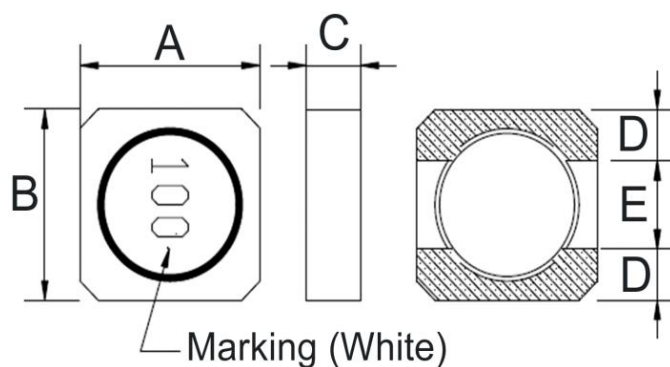


Dimensions in mm

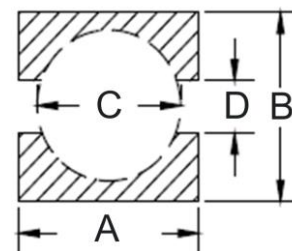
| TYPE         | Shape and Dimensions |         |        |     |     | Recommended Pattern |     |     |     |
|--------------|----------------------|---------|--------|-----|-----|---------------------|-----|-----|-----|
|              | A                    | B       | C      | D   | E   | A                   | B   | C   | D   |
| BPXX00030308 | 3.0±0.2              | 3.0±0.2 | 0.8Max | 0.9 | 1.2 | 3.3                 | 3.3 | 2.2 | 1.0 |
| BPXX00030310 | 3.0±0.2              | 3.0±0.2 | 1.0Max | 0.9 | 1.2 | 3.3                 | 3.3 | 2.2 | 1.0 |
| BPXX00030312 | 3.0±0.2              | 3.0±0.2 | 1.2Max | 0.9 | 1.2 | 3.3                 | 3.3 | 2.2 | 1.0 |
| BPXX00030315 | 3.0±0.2              | 3.0±0.2 | 1.5Max | 0.9 | 1.2 | 3.3                 | 3.3 | 2.2 | 1.0 |
| BPXX00030320 | 3.0±0.2              | 3.0±0.2 | 2.0Max | 0.9 | 1.2 | 3.3                 | 3.3 | 2.2 | 1.0 |

# SMD Shielded Power Inductors – BPXX Series

## Shape and Dimensions



## Recommended Pattern



Dimensions in mm

| TYPE         | Shape and Dimensions |         |        |      |     | Recommended Pattern |     |     |     |
|--------------|----------------------|---------|--------|------|-----|---------------------|-----|-----|-----|
|              | A                    | B       | C      | D    | E   | A                   | B   | C   | D   |
| BPXX00040412 | 4.0±0.2              | 4.0±0.2 | 1.2Max | 1.1  | 1.8 | 4.4                 | 4.4 | 2.9 | 1.8 |
| BPXX00040418 | 4.0±0.2              | 4.0±0.2 | 1.8Max | 1.1  | 1.8 | 4.4                 | 4.4 | 2.9 | 1.8 |
| BPXX00040420 | 4.0±0.2              | 4.0±0.2 | 2.0Max | 1.1  | 1.8 | 4.4                 | 4.4 | 2.9 | 1.8 |
| BPXX00040430 | 4.0±0.2              | 4.0±0.2 | 3.0Max | 1.1  | 1.8 | 4.4                 | 4.4 | 2.9 | 1.8 |
| BPXX00050515 | 5.0±0.2              | 5.0±0.2 | 1.5Max | 1.75 | 1.5 | 5.4                 | 5.4 | 3.8 | 1.5 |
| BPXX00050520 | 5.0±0.2              | 5.0±0.2 | 2.0Max | 1.75 | 1.5 | 5.4                 | 5.4 | 3.8 | 1.5 |
| BPXX00050530 | 5.0±0.2              | 5.0±0.2 | 3.0Max | 1.75 | 1.5 | 5.4                 | 5.4 | 3.8 | 1.5 |
| BPXX00060620 | 6.0±0.2              | 6.0±0.2 | 2.0Max | 2.0  | 2.0 | 6.6                 | 6.6 | 4.6 | 2.0 |
| BPXX00060625 | 6.0±0.2              | 6.0±0.2 | 2.5Max | 2.0  | 2.0 | 6.6                 | 6.6 | 4.6 | 2.0 |
| BPXX00060630 | 6.0±0.2              | 6.0±0.2 | 3.0Max | 2.0  | 2.0 | 6.6                 | 6.6 | 4.6 | 2.0 |
| BPXX00060635 | 6.0±0.2              | 6.0±0.2 | 3.5Max | 2.0  | 2.0 | 6.6                 | 6.6 | 4.6 | 2.0 |

## SMD Shielded Power Inductors – BPXX Series

### Standard Specifications

| Part Number        | Inductance (uH) | Tolerance (±%) | Test Frequency (kHz) | RDC (Ω)Max | Isat (A)Max | Irms (A)Typ | Marking |
|--------------------|-----------------|----------------|----------------------|------------|-------------|-------------|---------|
| BPXX000303081R0□00 | 1.0             | 30             | 100                  | 0.125      | 1.4         | 1.3         | 1R0     |
| BPXX000303081R5□00 | 1.5             | 20,30          | 100                  | 0.134      | 1.15        | 1.2         | 1R5     |
| BPXX000303082R2□00 | 2.2             | 20,30          | 100                  | 0.175      | 0.95        | 1.1         | 2R2     |
| BPXX000303083R3□00 | 3.3             | 20,30          | 100                  | 0.285      | 0.82        | 0.95        | 3R3     |
| BPXX000303084R7□00 | 4.7             | 20,30          | 100                  | 0.35       | 0.70        | 0.8         | 4R7     |
| BPXX000303086R8□00 | 6.8             | 20,30          | 100                  | 0.5        | 0.59        | 0.67        | 6R8     |
| BPXX00030308100□00 | 10              | 20,30          | 100                  | 0.65       | 0.49        | 0.56        | 100     |
| BPXX00030308220□00 | 22              | 20,30          | 100                  | 1.5        | 0.30        | 0.38        | 220     |
| BPXX00030308330□00 | 33              | 20,30          | 100                  | 2.3        | 0.26        | 0.32        | 330     |

**Note: When ordering, please specify tolerance code. Tolerance: M=±20% , T=±30%**

- Operating temperature range - 40°C ~ 125°C(Including self - temperature rise)
- Isat for Inductance drop 30% from its value without current
- Iirms for a 40°C temperature rise from 25°C ambient with current
- Rated DC Current : The less value which is Isat or Iirms

## SMD Shielded Power Inductors – BPXX Series

### Standard Specifications

| Part Number        | Inductance (uH) | Tolerance (±%) | Test Frequency (kHz) | RDC (Ω)Max | Isat (A)Max | Irms (A)Typ | Marking |
|--------------------|-----------------|----------------|----------------------|------------|-------------|-------------|---------|
| BPXX00030310R47□00 | 0.47            | 20,30          | 100                  | 0.07       | 2.3         | 2.3         | R47     |
| BPXX00030310R56□00 | 0.56            | 20,30          | 100                  | 0.08       | 2.0         | 2.0         | R56     |
| BPXX000303101R0□00 | 1.0             | 20,30          | 100                  | 0.085      | 1.6         | 1.75        | 1R0     |
| BPXX000303101R2□00 | 1.2             | 20,30          | 100                  | 0.10       | 1.5         | 1.7         | 1R2     |
| BPXX000303101R5□00 | 1.5             | 20,30          | 100                  | 0.12       | 1.3         | 1.6         | 1R5     |
| BPXX000303101R8□00 | 1.8             | 20,30          | 100                  | 0.15       | 1.2         | 1.4         | 1R8     |
| BPXX000303102R2□00 | 2.2             | 20,30          | 100                  | 0.22       | 1.1         | 1.15        | 2R2     |
| BPXX000303103R3□00 | 3.3             | 20,30          | 100                  | 0.22       | 0.82        | 1.05        | 3R3     |
| BPXX000303103R9□00 | 3.9             | 20,30          | 100                  | 0.25       | 0.78        | 0.95        | 3R9     |
| BPXX000303104R7□00 | 4.7             | 20,30          | 100                  | 0.33       | 0.72        | 0.80        | 4R7     |
| BPXX000303105R6□00 | 5.6             | 20,30          | 100                  | 0.40       | 0.66        | 0.78        | 5R6     |
| BPXX000303106R8□00 | 6.8             | 20,30          | 100                  | 0.45       | 0.62        | 0.74        | 6R8     |
| BPXX000303108R2□00 | 8.2             | 20,30          | 100                  | 0.56       | 0.55        | 0.71        | 8R2     |
| BPXX00030310100□00 | 10              | 20,30          | 100                  | 0.63       | 0.51        | 0.64        | 100     |
| BPXX00030310120□00 | 12              | 20,30          | 100                  | 0.74       | 0.45        | 0.55        | 120     |
| BPXX00030310150□00 | 15              | 20,30          | 100                  | 0.95       | 0.40        | 0.50        | 150     |
| BPXX00030310180□00 | 18              | 20,30          | 100                  | 1.0        | 0.37        | 0.47        | 180     |
| BPXX00030310220□00 | 22              | 20,30          | 100                  | 1.2        | 0.33        | 0.41        | 220     |
| BPXX00030310330□00 | 33              | 20,30          | 100                  | 2.0        | 0.27        | 0.35        | 330     |
| BPXX00030310470□00 | 47              | 20,30          | 100                  | 3.2        | 0.24        | 0.31        | 470     |

**Note: When ordering, please specify tolerance code. Tolerance: M=±20% , T=±30%**

- Operating temperature range - 40°C ~ 125°C(Including self - temperature rise)
- Isat for Inductance drop 30% from its value without current
- Irms for a 40°C temperature rise from 25°C ambient with current
- Rated DC Current : The less value which is Isat or Irms

## SMD Shielded Power Inductors – BPXX Series

### Standard Specifications

| Part Number        | Inductance (uH) | Tolerance (±%) | Test Frequency (kHz) | RDC (Ω)Max | Isat (A)Max | Irms (A)Typ | Marking |
|--------------------|-----------------|----------------|----------------------|------------|-------------|-------------|---------|
| BPXX00030312R47□00 | 0.47            | 30             | 100                  | 0.05       | 2.5         | 2.5         | R47     |
| BPXX000303121R0□00 | 1.0             | 30             | 100                  | 0.08       | 1.8         | 1.8         | 1R0     |
| BPXX000303121R2□00 | 1.2             | 30             | 100                  | 0.095      | 1.65        | 1.7         | 1R2     |
| BPXX000303121R5□00 | 1.5             | 30             | 100                  | 0.11       | 1.5         | 1.65        | 1R5     |
| BPXX000303122R0□00 | 2.0             | 30             | 100                  | 0.15       | 1.3         | 1.3         | 2R0     |
| BPXX000303122R2□00 | 2.2             | 30             | 100                  | 0.15       | 1.3         | 1.3         | 2R2     |
| BPXX000303123R3□00 | 3.3             | 30             | 100                  | 0.18       | 1.0         | 1.2         | 3R3     |
| BPXX000303124R7□00 | 4.7             | 20,30          | 100                  | 0.28       | 0.85        | 1.05        | 4R7     |
| BPXX000303125R6□00 | 5.6             | 20,30          | 100                  | 0.36       | 0.80        | 0.85        | 5R6     |
| BPXX000303126R8□00 | 6.8             | 20,30          | 100                  | 0.42       | 0.75        | 0.70        | 6R8     |
| BPXX000303128R2□00 | 8.2             | 20,30          | 100                  | 0.55       | 0.65        | 0.65        | 8R2     |
| BPXX0003031210□00  | 10              | 20,30          | 100                  | 0.62       | 0.57        | 0.6         | 100     |
| BPXX0003031215□00  | 15              | 20,30          | 100                  | 0.8        | 0.5         | 0.5         | 150     |
| BPXX0003031222□00  | 22              | 20,30          | 100                  | 1.2        | 0.4         | 0.42        | 220     |

**Note: When ordering, please specify tolerance code. Tolerance: M=±20% , T=±30%**

- Operating temperature range - 40°C ~ 125°C(Including self - temperature rise)
- Isat for Inductance drop 30% from its value without current
- Irms for a 40°C temperature rise from 25°C ambient with current
- Rated DC Current : The less value which is Isat or Irms

## SMD Shielded Power Inductors – BPXX Series

### Standard Specifications

| Part Number        | Inductance (uH) | Tolerance (±%) | Test Frequency (kHz) | RDC (Ω)Max | Isat (A)Max | Irms (A)Typ | Marking |
|--------------------|-----------------|----------------|----------------------|------------|-------------|-------------|---------|
| BPXX000303151R0□00 | 1.0             | 20,30          | 100                  | 0.075      | 2.0         | 2.0         | 1R0     |
| BPXX000303151R5□00 | 1.5             | 20,30          | 100                  | 0.10       | 1.8         | 1.7         | 1R5     |
| BPXX000303151R8□00 | 1.8             | 20,30          | 100                  | 0.10       | 1.5         | 1.4         | 1R8     |
| BPXX000303152R1□00 | 2.1             | 20,30          | 100                  | 0.11       | 1.5         | 1.4         | 2R1     |
| BPXX000303152R2□00 | 2.2             | 20,30          | 100                  | 0.11       | 1.5         | 1.4         | 2R2     |
| BPXX000303153R3□00 | 3.3             | 20,30          | 100                  | 0.13       | 1.3         | 1.4         | 3R3     |
| BPXX000303154R7□00 | 4.7             | 20,30          | 100                  | 0.20       | 1.1         | 1.2         | 4R7     |
| BPXX000303156R8□00 | 6.8             | 20,30          | 100                  | 0.30       | 0.91        | 0.90        | 6R8     |
| BPXX00030315100□00 | 10              | 20,30          | 100                  | 0.44       | 0.65        | 0.75        | 100     |
| BPXX00030315150□00 | 15              | 20,30          | 100                  | 0.70       | 0.55        | 0.59        | 150     |
| BPXX00030315180□00 | 18              | 20,30          | 100                  | 0.75       | 0.53        | 0.58        | 180     |
| BPXX00030315220□00 | 22              | 20,30          | 100                  | 0.825      | 0.49        | 0.57        | 220     |
| BPXX00030315330□00 | 33              | 20,30          | 100                  | 1.30       | 0.42        | 0.48        | 330     |
| BPXX00030315470□00 | 47              | 20,30          | 100                  | 1.55       | 0.32        | 0.40        | 470     |
| BPXX00030315680□00 | 68              | 20,30          | 100                  | 2.25       | 0.28        | 0.33        | 680     |
| BPXX00030315101□00 | 100             | 20,30          | 100                  | 3.4        | 0.23        | 0.26        | 101     |
| BPXX00030315471□00 | 470             | 20,30          | 100                  | 15         | 0.11        | 0.11        | 471     |

**Note: When ordering, please specify tolerance code. Tolerance: M=±20% , T=±30%**

- Operating temperature range - 40°C ~ 125°C(Including self - temperature rise)
- Isat for Inductance drop 30% from its value without current
- I rms for a 40°C temperature rise from 25°C ambient with current
- Rated DC Current : The less value which is Isat or I rms

## SMD Shielded Power Inductors – BPXX Series

### Standard Specifications

| Part Number        | Inductance (uH) | Tolerance (±%) | Test Frequency (kHz) | RDC (Ω)Max | Isat (A)Max | Irms (A)Typ | Marking |
|--------------------|-----------------|----------------|----------------------|------------|-------------|-------------|---------|
| BPXX000303201R0□00 | 1.0             | 20,30          | 100                  | 0.04       | 2.8         | 2.5         | 1R0     |
| BPXX000303202R2□00 | 2.2             | 20,30          | 100                  | 0.08       | 2.0         | 1.8         | 2R2     |
| BPXX000303203R3□00 | 3.3             | 20,30          | 100                  | 0.10       | 1.8         | 1.6         | 3R3     |
| BPXX000303204R7□00 | 4.7             | 20,30          | 100                  | 0.14       | 1.6         | 1.4         | 4R7     |
| BPXX000303206R8□00 | 6.8             | 20,30          | 100                  | 0.17       | 1.4         | 1.2         | 6R8     |
| BPXX00030320100□00 | 10              | 20,30          | 100                  | 0.4        | 1.0         | 0.80        | 100     |
| BPXX00030320220□00 | 22              | 20,30          | 100                  | 0.6        | 0.7         | 0.65        | 220     |
| BPXX00030320330□00 | 33              | 20,30          | 100                  | 1.0        | 0.6         | 0.52        | 330     |
| BPXX00030320470□00 | 47              | 20,30          | 100                  | 1.35       | 0.5         | 0.50        | 470     |

**Note: When ordering, please specify tolerance 00de. Tolerance: M=±20% , T=±30%**

- Operating temperature range - 40°C ~ 125°C(Including self - temperature rise)
- Isat for Inductance drop 30% from its value without current
- I rms for a 40°C temperature rise from 25°C ambient with current
- Rated DC Current : The less value which is Isat or I rms

## SMD Shielded Power Inductors – BPXX Series

### Standard Specifications

| Part Number        | Inductance (uH) | Tolerance (±%) | Test Frequency (kHz) | RDC (Ω)Max | Isat (A)Max | Irms (A)Typ | Marking |
|--------------------|-----------------|----------------|----------------------|------------|-------------|-------------|---------|
| BPXX00040412R33□00 | 0.33            | 20,30          | 100                  | 0.023      | 5.6         | 3.7         | R33     |
| BPXX00040412R47□00 | 0.47            | 30             | 100                  | 0.045      | 4.0         | 2.5         | R47     |
| BPXX00040412R68□00 | 0.68            | 30             | 100                  | 0.055      | 3.5         | 2.45        | R68     |
| BPXX000404121R0□00 | 1.0             | 30             | 100                  | 0.060      | 2.8         | 2.4         | 1R0     |
| BPXX000404121R2□00 | 1.2             | 20,30          | 100                  | 0.065      | 2.65        | 2.3         | 1R2     |
| BPXX000404121R5□00 | 1.5             | 30             | 100                  | 0.07       | 2.5         | 2.2         | 1R5     |
| BPXX000404122R2□00 | 2.2             | 20,30          | 100                  | 0.10       | 2.1         | 1.75        | 2R2     |
| BPXX000404123R3□00 | 3.3             | 20,30          | 100                  | 0.13       | 1.5         | 1.45        | 3R3     |
| BPXX000404124R7□00 | 4.7             | 20,30          | 100                  | 0.175      | 1.4         | 1.3         | 4R7     |
| BPXX000404125R6□00 | 5.6             | 20,30          | 100                  | 0.26       | 1.3         | 1.1         | 5R6     |
| BPXX000404126R8□00 | 6.8             | 20,30          | 100                  | 0.34       | 1.2         | 0.98        | 6R8     |
| BPXX00040412100□00 | 10              | 20,30          | 100                  | 0.35       | 0.7         | 0.75        | 100     |
| BPXX00040412150□00 | 15              | 20,30          | 100                  | 0.55       | 0.6         | 0.73        | 150     |
| BPXX00040412470□00 | 47              | 20,30          | 100                  | 1.4        | 0.38        | 0.52        | 470     |

**Note: When ordering, please specify tolerance code. Tolerance: M=±20% , T=±30%**

- Operating temperature range - 40°C ~ 125°C(Including self - temperature rise)
- Isat for Inductance drop 30% from its value without current
- I rms for a 40°C temperature rise from 25°C ambient with current
- Rated DC Current : The less value which is Isat or I rms



# SMD Shielded Power Inductors – BPXX Series

## Standard Specifications

| Part Number        | Inductance (uH) | Tolerance (±%) | Test Frequency (kHz) | RDC (Ω)Max | Isat (A)Max | Irms (A)Typ | Marking |
|--------------------|-----------------|----------------|----------------------|------------|-------------|-------------|---------|
| BPXX00040418R56□00 | 0.56            | 20,30          | 100                  | 0.030      | 4.8         | 2.80        | R56     |
| BPXX00040418R68□00 | 0.68            | 30             | 100                  | 0.035      | 4.5         | 2.75        | R68     |
| BPXX000404181R0□00 | 1.0             | 30             | 100                  | 0.04       | 3.4         | 2.7         | 1R0     |
| BPXX000404181R5□00 | 1.5             | 30             | 100                  | 0.05       | 2.7         | 2.5         | 1R5     |
| BPXX000404181R6□00 | 1.6             | 20,30          | 100                  | 0.05       | 2.7         | 2.5         | 1R6     |
| BPXX000404181R8□00 | 1.8             | 30             | 100                  | 0.06       | 2.6         | 2.4         | 1R8     |
| BPXX000404182R2□00 | 2.2             | 20,30          | 100                  | 0.07       | 2.5         | 2.2         | 2R2     |
| BPXX000404182R5□00 | 2.5             | 20,30          | 100                  | 0.075      | 2.4         | 2.1         | 2R5     |
| BPXX000404183R3□00 | 3.3             | 20,30          | 100                  | 0.08       | 2.2         | 2.0         | 3R3     |
| BPXX000404183R6□00 | 3.6             | 20,30          | 100                  | 0.10       | 2.0         | 1.8         | 3R6     |
| BPXX000404183R9□00 | 3.9             | 20,30          | 100                  | 0.10       | 2.0         | 1.8         | 3R9     |
| BPXX000404184R7□00 | 4.7             | 20,30          | 100                  | 0.125      | 1.7         | 1.6         | 4R7     |
| BPXX000404185R6□00 | 5.6             | 20,30          | 100                  | 0.135      | 1.5         | 1.45        | 5R6     |
| BPXX000404186R8□00 | 6.8             | 20,30          | 100                  | 0.15       | 1.2         | 1.30        | 6R8     |
| BPXX00040418100□00 | 10              | 20,30          | 100                  | 0.20       | 1.1         | 1.15        | 100     |
| BPXX00040418150□00 | 15              | 20,30          | 100                  | 0.28       | 0.86        | 0.90        | 150     |
| BPXX00040418180□00 | 18              | 20,30          | 100                  | 0.30       | 0.78        | 0.88        | 180     |
| BPXX00040418220□00 | 22              | 20,30          | 100                  | 0.36       | 0.74        | 0.85        | 220     |
| BPXX00040418330□00 | 33              | 20,30          | 100                  | 0.46       | 0.58        | 0.77        | 330     |
| BPXX00040418470□00 | 47              | 20,30          | 100                  | 0.75       | 0.51        | 0.63        | 470     |
| BPXX00040418680□00 | 68              | 20,30          | 100                  | 1.07       | 0.41        | 0.48        | 680     |
| BPXX00040418820□00 | 82              | 20,30          | 100                  | 1.22       | 0.38        | 0.44        | 820     |
| BPXX00040418101□00 | 100             | 20,30          | 100                  | 1.64       | 0.34        | 0.42        | 101     |
| BPXX00040418121□00 | 120             | 20,30          | 100                  | 1.88       | 0.31        | 0.38        | 121     |
| BPXX00040418151□00 | 150             | 20,30          | 100                  | 2.45       | 0.27        | 0.31        | 151     |
| BPXX00040418181□00 | 180             | 20,30          | 100                  | 2.91       | 0.24        | 0.30        | 181     |
| BPXX00040418221□00 | 220             | 20,30          | 100                  | 4.2        | 0.22        | 0.24        | 221     |
| BPXX00040418331□00 | 330             | 20,30          | 100                  | 5.9        | 0.18        | 0.22        | 331     |
| BPXX00040418471□00 | 470             | 20,30          | 100                  | 7.1        | 0.14        | 0.20        | 471     |
| BPXX00040418561□00 | 560             | 20,30          | 100                  | 10         | 0.13        | 0.18        | 561     |
| BPXX00040418681□00 | 680             | 20,30          | 100                  | 11.5       | 0.12        | 0.16        | 681     |
| BPXX00040418821□00 | 820             | 20,30          | 100                  | 17.8       | 0.11        | 0.12        | 821     |
| BPXX00040418102□00 | 1000            | 20,30          | 100                  | 19.4       | 0.10        | 0.10        | 102     |
| BPXX00040418152□00 | 1500            | 20,30          | 100                  | 30         | 0.08        | 0.08        | 152     |

**Note: When ordering, please specify tolerance code. Tolerance: M=±20% , T=±30%**

- Operating temperature range - 40°C ~ 125°C(Including self - temperature rise)
- Isat for Inductance drop 30% from its value without current
- Irms for a 40°C temperature rise from 25°C ambient with current
- Rated DC Current : The less value which is Isat or Irms

Please be sure to request approval specifications that provide further details of the products. Kindly note that the content of these specifications are subject to change or may be discontinued without prior notice. This product may not be designed/used in medical or high risk applications without Chilisin approval. Please contact our sales department before ordering.

## SMD Shielded Power Inductors – BPXX Series

### Standard Specifications

| Part Number        | Inductance (uH) | Tolerance (±%) | Test Frequency (kHz) | RDC (Ω)Max | Isat (A)Max | Irms (A)Typ | Marking |
|--------------------|-----------------|----------------|----------------------|------------|-------------|-------------|---------|
| BPXX000404201R8□00 | 1.8             | 30             | 100                  | 0.051      | 1.97        | 2.37        | 1R8     |
| BPXX000404202R2□00 | 2.2             | 30             | 100                  | 0.059      | 1.72        | 2.19        | 2R2     |
| BPXX000404203R3□00 | 3.3             | 30             | 100                  | 0.078      | 1.52        | 1.94        | 3R3     |
| BPXX000404204R7□00 | 4.7             | 20,30          | 100                  | 0.098      | 1.24        | 1.71        | 4R7     |
| BPXX000404206R8□00 | 6.8             | 20,30          | 100                  | 0.131      | 1.05        | 1.47        | 6R8     |
| BPXX00040420100□00 | 10              | 20,30          | 100                  | 0.185      | 0.85        | 1.0         | 100     |
| BPXX00040420150□00 | 15              | 20,30          | 100                  | 0.241      | 0.70        | 0.9         | 150     |
| BPXX00040420220□00 | 22              | 20,30          | 100                  | 0.431      | 0.56        | 0.8         | 220     |
| BPXX00040420330□00 | 33              | 20,30          | 100                  | 0.628      | 0.47        | 0.69        | 330     |
| BPXX00040420470□00 | 47              | 20,30          | 100                  | 0.934      | 0.39        | 0.56        | 470     |
| BPXX00040420680□00 | 68              | 20,30          | 100                  | 1.2        | 0.32        | 0.5         | 680     |
| BPXX00040420101□00 | 100             | 20,30          | 100                  | 1.4        | 0.26        | 0.4         | 101     |
| BPXX00040420561□00 | 560             | 20,30          | 100                  | 6.6        | 0.12        | 0.2         | 561     |

**Note: When ordering, please specify tolerance code. Tolerance: M=±20% , T=±30%**

- Operating temperature range - 40°C ~ 125°C(Including self - temperature rise)
- Isat for Inductance drop 30% from its value without current
- Iirms for a 40°C temperature rise from 25°C ambient with current
- Rated DC Current : The less value which is Isat or Iirms

## SMD Shielded Power Inductors – BPXX Series

### Standard Specifications

| Part Number        | Inductance (uH) | Tolerance (±%) | Test Frequency (kHz) | RDC (Ω)Max | Isat (A)Max | Irms (A)Typ | Marking |
|--------------------|-----------------|----------------|----------------------|------------|-------------|-------------|---------|
| BPXX000404301R0□00 | 1.0             | 30             | 100                  | 0.020      | 2.80        | 3.3         | 1R0     |
| BPXX000404301R2□00 | 1.2             | 30             | 100                  | 0.025      | 2.65        | 3.1         | 1R2     |
| BPXX000404301R5□00 | 1.5             | 30             | 100                  | 0.028      | 2.6         | 3.0         | 1R5     |
| BPXX000404302R2□00 | 2.2             | 30             | 100                  | 0.035      | 2.3         | 2.7         | 2R2     |
| BPXX000404303R3□00 | 3.3             | 20,30          | 100                  | 0.045      | 2.1         | 2.5         | 3R3     |
| BPXX000404304R7□00 | 4.7             | 20,30          | 100                  | 0.055      | 2.0         | 2.3         | 4R7     |
| BPXX000404306R8□00 | 6.8             | 20,30          | 100                  | 0.078      | 1.5         | 2.0         | 6R8     |
| BPXX0004043010□00  | 10              | 20,30          | 100                  | 0.130      | 1.0         | 1.5         | 100     |
| BPXX0004043012□00  | 12              | 20,30          | 100                  | 0.175      | 0.9         | 1.4         | 120     |
| BPXX0004043015□00  | 15              | 20,30          | 100                  | 0.21       | 0.85        | 1.3         | 150     |
| BPXX0004043022□00  | 22              | 20,30          | 100                  | 0.29       | 0.8         | 1.1         | 220     |
| BPXX0004043033□00  | 33              | 20,30          | 100                  | 0.455      | 0.7         | 0.85        | 330     |
| BPXX0004043047□00  | 47              | 20,30          | 100                  | 0.685      | 0.6         | 0.70        | 470     |
| BPXX0004043068□00  | 68              | 20,30          | 100                  | 0.955      | 0.5         | 0.55        | 680     |
| BPXX0004043082□00  | 82              | 20,30          | 100                  | 1.1        | 0.45        | 0.45        | 820     |
| BPXX00040430101□00 | 100             | 20,30          | 100                  | 1.5        | 0.4         | 0.40        | 101     |
| BPXX00040430151□00 | 150             | 20,30          | 100                  | 2.4        | 0.3         | 0.35        | 151     |
| BPXX00040430181□00 | 180             | 20,30          | 100                  | 3.6        | 0.25        | 0.30        | 181     |
| BPXX00040430471□00 | 470             | 20,30          | 100                  | 5.5        | 0.14        | 0.15        | 471     |
| BPXX00040430102□00 | 1000            | 20,30          | 100                  | 9          | 0.12        | 0.12        | 102     |
| BPXX00040430122□00 | 1200            | 20,30          | 100                  | 14         | 0.11        | 0.11        | 122     |
| BPXX00040430222□00 | 2200            | 20,30          | 100                  | 18         | 0.09        | 0.09        | 222     |

**Note: When ordering, please specify tolerance code. Tolerance: M=±20% , T=±30%**

- Operating temperature range - 40°C ~ 125°C(Including self - temperature rise)
- Isat for Inductance drop 30% from its value without current
- I rms for a 40°C temperature rise from 25°C ambient with current
- Rated DC Current : The less value which is Isat or I rms

## SMD Shielded Power Inductors – BPXX Series

### Standard Specifications

| Part Number        | Inductance (uH) | Tolerance (±%) | Test Frequency (kHz) | RDC (Ω)Max | Isat (A)Max | Irms (A)Typ | Marking |
|--------------------|-----------------|----------------|----------------------|------------|-------------|-------------|---------|
| BPXX000505151R0□00 | 1.0             | 20,30          | 100                  | 0.05       | 3.5         | 2.65        | 1R0     |
| BPXX000505151R2□00 | 1.2             | 20,30          | 100                  | 0.05       | 3.5         | 2.65        | 1R2     |
| BPXX000505151R3□00 | 1.3             | 20,30          | 100                  | 0.065      | 2.6         | 2.35        | 1R3     |
| BPXX000505151R5□00 | 1.5             | 20,30          | 100                  | 0.065      | 2.6         | 2.35        | 1R5     |
| BPXX000505151R8□00 | 1.8             | 30             | 100                  | 0.075      | 2.6         | 2.15        | 1R8     |
| BPXX000505152R2□00 | 2.2             | 20,30          | 100                  | 0.09       | 2.6         | 2.0         | 2R2     |
| BPXX000505153R3□00 | 3.3             | 20,30          | 100                  | 0.125      | 2.0         | 1.8         | 3R3     |
| BPXX000505154R7□00 | 4.7             | 20,30          | 100                  | 0.150      | 1.7         | 1.62        | 4R7     |
| BPXX000505155R6□00 | 5.6             | 20,30          | 100                  | 0.175      | 1.6         | 1.45        | 5R6     |
| BPXX000505156R8□00 | 6.8             | 20,30          | 100                  | 0.225      | 1.4         | 1.25        | 6R8     |
| BPXX000505158R2□00 | 8.2             | 20,30          | 100                  | 0.28       | 1.3         | 1.05        | 8R2     |
| BPXX00050515100□00 | 10              | 20,30          | 100                  | 0.30       | 1.1         | 0.95        | 100     |
| BPXX00050515120□00 | 12              | 20,30          | 100                  | 0.35       | 1.0         | 0.84        | 120     |
| BPXX00050515150□00 | 15              | 20,30          | 100                  | 0.36       | 0.7         | 0.84        | 150     |
| BPXX00050515180□00 | 18              | 20,30          | 100                  | 0.55       | 0.65        | 0.83        | 180     |
| BPXX00050515220□00 | 22              | 20,30          | 100                  | 0.675      | 0.65        | 0.82        | 220     |
| BPXX00050515330□00 | 33              | 20,30          | 100                  | 0.75       | 0.50        | 0.70        | 330     |
| BPXX00050515470□00 | 47              | 20,30          | 100                  | 1.0        | 0.45        | 0.57        | 470     |
| BPXX00050515560□00 | 56              | 20,30          | 100                  | 1.13       | 0.40        | 0.52        | 560     |
| BPXX00050515680□00 | 68              | 20,30          | 100                  | 1.45       | 0.38        | 0.47        | 680     |
| BPXX00050515101□00 | 100             | 20,30          | 100                  | 1.95       | 0.28        | 0.42        | 101     |
| BPXX00050515121□00 | 120             | 20,30          | 100                  | 2.5        | 0.28        | 0.37        | 121     |
| BPXX00050515151□00 | 150             | 20,30          | 100                  | 3.4        | 0.24        | 0.33        | 151     |
| BPXX00050515221□00 | 220             | 20,30          | 100                  | 4.5        | 0.20        | 0.29        | 221     |
| BPXX00050515331□00 | 330             | 20,30          | 100                  | 7.4        | 0.165       | 0.22        | 331     |
| BPXX00050515471□00 | 470             | 20,30          | 100                  | 7.5        | 0.12        | 0.21        | 471     |
| BPXX00050515561□00 | 560             | 20,30          | 100                  | 8.5        | 0.11        | 0.19        | 561     |
| BPXX00050515681□00 | 680             | 20,30          | 100                  | 10.6       | 0.10        | 0.175       | 681     |
| BPXX00050515102□00 | 1000            | 20,30          | 100                  | 20         | 0.08        | 0.15        | 102     |

**Note: When ordering, please specify tolerance code. Tolerance: M=±20% , T=±30%**

- Operating temperature range - 40°C ~ 125°C(Including self - temperature rise)
- Isat for Inductance drop 30% from its value without current
- Irms for a 40°C temperature rise from 25°C ambient with current
- Rated DC Current : The less value which is Isat or Irms

## SMD Shielded Power Inductors – BPXX Series

### Standard Specifications

| Part Number        | Inductance (uH) | Tolerance (±%) | Test Frequency (kHz) | RDC (Ω)Max | Isat (A)Max | Irms (A)Typ | Marking |
|--------------------|-----------------|----------------|----------------------|------------|-------------|-------------|---------|
| BPXX00050520R30□00 | 0.30            | 30             | 100                  | 0.00875    | 6.0         | 7           | R30     |
| BPXX00050520R33□00 | 0.33            | 30             | 100                  | 0.01065    | 5.8         | 6           | R33     |
| BPXX00050520R68□00 | 0.68            | 30             | 100                  | 0.01470    | 4.0         | 5.2         | R68     |
| BPXX000505201R0□00 | 1.0             | 30             | 100                  | 0.02455    | 3.5         | 4.0         | 1R0     |
| BPXX000505201R3□00 | 1.3             | 30             | 100                  | 0.035      | 3.2         | 3.3         | 1R3     |
| BPXX000505201R5□00 | 1.5             | 30             | 100                  | 0.035      | 3.2         | 3.3         | 1R5     |
| BPXX000505201R8□00 | 1.8             | 20,30          | 100                  | 0.045      | 3.0         | 3.0         | 1R8     |
| BPXX000505202R2□00 | 2.2             | 20,30          | 100                  | 0.055      | 2.7         | 2.75        | 2R2     |
| BPXX000505202R5□00 | 1.3             | 20,30          | 100                  | 0.060      | 2.6         | 2.6         | 2R5     |
| BPXX000505202R7□00 | 1.3             | 20,30          | 100                  | 0.062      | 2.5         | 2.6         | 2R7     |
| BPXX000505203R3□00 | 3.3             | 20,30          | 100                  | 0.065      | 2.4         | 2.5         | 3R3     |
| BPXX000505204R7□00 | 4.7             | 20,30          | 100                  | 0.08       | 2.1         | 2.0         | 4R7     |
| BPXX000505205R6□00 | 5.6             | 20,30          | 100                  | 0.09       | 1.95        | 1.9         | 5R6     |
| BPXX000505206R8□00 | 6.8             | 20,30          | 100                  | 0.105      | 1.8         | 1.7         | 6R8     |
| BPXX000505208R2□00 | 8.2             | 20,30          | 100                  | 0.12       | 1.6         | 1.6         | 8R2     |
| BPXX00050520100□00 | 10              | 20,30          | 100                  | 0.15       | 1.4         | 1.5         | 100     |
| BPXX00050520150□00 | 15              | 20,30          | 100                  | 0.27       | 1.1         | 1.2         | 150     |
| BPXX00050520220□00 | 22              | 20,30          | 100                  | 0.35       | 0.78        | 0.9         | 220     |
| BPXX00050520330□00 | 33              | 20,30          | 100                  | 0.48       | 0.65        | 0.8         | 330     |
| BPXX00050520470□00 | 47              | 20,30          | 100                  | 0.75       | 0.60        | 0.7         | 470     |
| BPXX00050520101□00 | 100             | 20,30          | 100                  | 1.21       | 0.34        | 0.55        | 101     |
| BPXX00050520121□00 | 120             | 20,30          | 100                  | 1.60       | 0.30        | 0.48        | 121     |
| BPXX00050520151□00 | 150             | 20,30          | 100                  | 2.25       | 0.28        | 0.40        | 151     |
| BPXX00050520221□00 | 220             | 20,30          | 100                  | 3.3        | 0.26        | 0.37        | 221     |
| BPXX00050520331□00 | 330             | 20,30          | 100                  | 4.2        | 0.22        | 0.30        | 331     |

**Note: When ordering, please specify tolerance code. Tolerance: M=±20% , T=±30%**

- Operating temperature range - 40°C ~ 125°C(Including self - temperature rise)
- Isat for Inductance drop 30% from its value without current
- Irms for a 40°C temperature rise from 25°C ambient with current
- Rated DC Current : The less value which is Isat or Irms

## SMD Shielded Power Inductors – BPXX Series

### Standard Specifications

| Part Number        | Inductance (uH) | Tolerance (±%) | Test Frequency (kHz) | RDC (Ω)Max | Isat (A)Max | Irms (A)Typ | Marking |
|--------------------|-----------------|----------------|----------------------|------------|-------------|-------------|---------|
| BPXX000505301R2□00 | 1.2             | 20,30          | 100                  | 0.040      | 3.5         | 2.65        | 1R2     |
| BPXX000505302R2□00 | 2.2             | 30             | 100                  | 0.057      | 3.1         | 2.15        | 2R2     |
| BPXX000505303R3□00 | 3.3             | 20,30          | 100                  | 0.066      | 2.5         | 1.80        | 3R3     |
| BPXX000505304R7□00 | 4.7             | 20,30          | 100                  | 0.083      | 2.0         | 1.75        | 4R7     |
| BPXX000505306R8□00 | 6.8             | 20,30          | 100                  | 0.099      | 1.7         | 1.6         | 6R8     |
| BPXX000505308R2□00 | 8.2             | 20,30          | 100                  | 0.12       | 1.6         | 1.5         | 8R2     |
| BPXX0005053010□00  | 10              | 20,30          | 100                  | 0.15       | 1.5         | 1.4         | 100     |
| BPXX0005053012□00  | 12              | 20,30          | 100                  | 0.16       | 1.4         | 1.3         | 120     |
| BPXX0005053015□00  | 15              | 20,30          | 100                  | 0.175      | 1.3         | 1.2         | 150     |
| BPXX0005053022□00  | 22              | 20,30          | 100                  | 0.19       | 1.0         | 1.1         | 220     |
| BPXX0005053027□00  | 27              | 20,30          | 100                  | 0.27       | 0.9         | 1.0         | 270     |
| BPXX0005053033□00  | 33              | 20,30          | 100                  | 0.35       | 0.8         | 0.9         | 330     |
| BPXX0005053047□00  | 47              | 20,30          | 100                  | 0.50       | 0.75        | 0.75        | 470     |
| BPXX0005053056□00  | 56              | 20,30          | 100                  | 0.65       | 0.65        | 0.65        | 560     |
| BPXX0005053068□00  | 68              | 20,30          | 100                  | 0.75       | 0.60        | 0.60        | 680     |
| BPXX00050530101□00 | 100             | 20,30          | 100                  | 0.90       | 0.45        | 0.55        | 101     |
| BPXX00050530221□00 | 220             | 20,30          | 100                  | 1.35       | 0.25        | 0.45        | 221     |
| BPXX00050530331□00 | 330             | 20,30          | 100                  | 1.8        | 0.17        | 0.42        | 331     |
| BPXX00050530821□00 | 820             | 20,30          | 100                  | 5.0        | 0.12        | 0.26        | 821     |
| BPXX00050530102□00 | 1000            | 20,30          | 100                  | 5.1        | 0.11        | 0.25        | 102     |
| BPXX00050530152□00 | 1500            | 20             | 100                  | 7.6        | 0.09        | 0.18        | 152     |
| BPXX00050530222□00 | 2200            | 20             | 100                  | 11         | 0.08        | 0.15        | 222     |

**Note: When ordering, please specify tolerance code. Tolerance: M=±20% , T=±30%**

- Operating temperature range - 40°C ~ 125°C(Including self - temperature rise)
- Isat for Inductance drop 30% from its value without current
- Irms for a 40°C temperature rise from 25°C ambient with current
- Rated DC Current : The less value which is Isat or Irms

## SMD Shielded Power Inductors – BPXX Series

### Standard Specifications

| Part Number        | Inductance (uH) | Tolerance (±%) | Test Frequency (kHz) | RDC (Ω)Max | Isat (A)Max | Irms (A)Typ | Marking |
|--------------------|-----------------|----------------|----------------------|------------|-------------|-------------|---------|
| BPXX000606201R2□00 | 1.2             | 30             | 100                  | 0.03       | 3.5         | 3.0         | 1R2     |
| BPXX000606201R3□00 | 1.3             | 30             | 100                  | 0.0305     | 3.2         | 3.0         | 1R3     |
| BPXX000606201R5□00 | 1.5             | 30             | 100                  | 0.0305     | 3.2         | 3.0         | 1R5     |
| BPXX000606201R8□00 | 1.8             | 30             | 100                  | 0.0375     | 3.0         | 2.6         | 1R8     |
| BPXX000606202R2□00 | 2.2             | 30             | 100                  | 0.04       | 2.7         | 2.4         | 2R2     |
| BPXX000606202R5□00 | 2.5             | 20,30          | 100                  | 0.04       | 2.7         | 2.4         | 1R5     |
| BPXX000606203R3□00 | 3.3             | 20,30          | 100                  | 0.06       | 2.5         | 2.3         | 3R3     |
| BPXX000606204R7□00 | 4.7             | 20,30          | 100                  | 0.07       | 2.1         | 2.0         | 4R7     |
| BPXX000606206R2□00 | 6.2             | 20,30          | 100                  | 0.085      | 1.9         | 1.8         | 6R2     |
| BPXX000606206R8□00 | 6.8             | 20,30          | 100                  | 0.085      | 1.9         | 1.8         | 6R8     |
| BPXX000606208R2□00 | 8.2             | 20,30          | 100                  | 0.125      | 1.7         | 1.5         | 8R2     |
| BPXX00060620100□00 | 10              | 20,30          | 100                  | 0.15       | 1.4         | 1.2         | 100     |
| BPXX00060620150□00 | 15              | 20,30          | 100                  | 0.22       | 1.1         | 1.1         | 150     |
| BPXX00060620220□00 | 22              | 20,30          | 100                  | 0.32       | 1.0         | 0.9         | 220     |
| BPXX00060620330□00 | 33              | 20,30          | 100                  | 0.45       | 0.9         | 0.8         | 330     |
| BPXX00060620470□00 | 47              | 20,30          | 100                  | 0.6        | 0.85        | 0.7         | 470     |
| BPXX00060620101□00 | 100             | 20,30          | 100                  | 1.2        | 0.5         | 0.45        | 101     |

**Note: When ordering, please specify tolerance code. Tolerance: M=±20% , T=±30%**

- Operating temperature range - 40°C ~ 125°C(Including self - temperature rise)
- Isat for Inductance drop 30% from its value without current
- Irms for a 40°C temperature rise from 25°C ambient with current
- Rated DC Current : The less value which is Isat or Irms

## SMD Shielded Power Inductors – BPXX Series

### Standard Specifications

| Part Number        | Inductance (uH) | Tolerance (±%) | Test Frequency (kHz) | RDC (Ω)Max | Isat (A)Max | Irms (A)Typ | Marking |
|--------------------|-----------------|----------------|----------------------|------------|-------------|-------------|---------|
| BPXX000606251R0□00 | 1.0             | 30             | 100                  | 0.035      | 5.5         | 1.80        | 1R0     |
| BPXX000606251R2□00 | 1.2             | 30             | 100                  | 0.040      | 5.3         | 1.65        | 1R2     |
| BPXX000606251R5□00 | 1.5             | 30             | 100                  | 0.040      | 5.3         | 1.65        | 1R5     |
| BPXX000606252R2□00 | 2.2             | 30             | 100                  | 0.045      | 3.9         | 1.40        | 2R2     |
| BPXX000606253R3□00 | 3.3             | 20,30          | 100                  | 0.055      | 3.5         | 1.35        | 3R3     |
| BPXX000606254R7□00 | 4.7             | 20,30          | 100                  | 0.065      | 3.1         | 1.3         | 4R7     |
| BPXX000606255R0□00 | 5.0             | 30             | 100                  | 0.065      | 3.1         | 1.3         | 5R0     |
| BPXX000606256R8□00 | 6.8             | 20,30          | 100                  | 0.095      | 2.7         | 1.3         | 6R8     |
| BPXX000606258R2□00 | 8.2             | 20,30          | 100                  | 0.100      | 2.2         | 1.3         | 8R2     |
| BPXX0006062510□00  | 10              | 20,30          | 100                  | 0.105      | 2.0         | 1.3         | 100     |
| BPXX0006062515□00  | 15              | 20,30          | 100                  | 0.135      | 2.0         | 1.2         | 150     |
| BPXX0006062522□00  | 22              | 20,30          | 100                  | 0.175      | 1.4         | 1.1         | 220     |
| BPXX0006062533□00  | 33              | 20,30          | 100                  | 0.26       | 1.1         | 0.9         | 330     |
| BPXX0006062547□00  | 47              | 20,30          | 100                  | 0.42       | 0.98        | 0.8         | 470     |
| BPXX0006062568□00  | 68              | 20,30          | 100                  | 0.42       | 0.59        | 0.74        | 470     |
| BPXX00060625101□00 | 100             | 20,30          | 100                  | 0.61       | 0.48        | 0.64        | 101     |
| BPXX00060625121□00 | 120             | 20,30          | 100                  | 0.75       | 0.43        | 0.58        | 121     |
| BPXX00060625151□00 | 150             | 20,30          | 100                  | 0.92       | 0.40        | 0.54        | 151     |
| BPXX00060625221□00 | 220             | 20,30          | 100                  | 1.3        | 0.32        | 0.50        | 221     |
| BPXX00060625331□00 | 330             | 20,30          | 100                  | 2.0        | 0.26        | 0.39        | 331     |
| BPXX00060625471□00 | 470             | 20,30          | 100                  | 2.6        | 0.22        | 0.37        | 471     |
| BPXX00060625681□00 | 680             | 20,30          | 100                  | 4          | 0.18        | 0.26        | 681     |
| BPXX00060625102□00 | 1000            | 20,30          | 100                  | 6          | 0.15        | 0.24        | 102     |

**Note: When ordering, please specify tolerance code. Tolerance: M=±20% , T=±30%**

- Operating temperature range - 40°C ~ 125°C(Including self - temperature rise)
- Isat for Inductance drop 30% from its value without current
- Iirms for a 40°C temperature rise from 25°C ambient with current
- Rated DC Current : The less value which is Isat or Iirms



## SMD Shielded Power Inductors – BPXX Series

### Standard Specifications

| Part Number        | Inductance (uH) | Tolerance (±%) | Test Frequency (kHz) | RDC (Ω)Max | Isat (A)Max | Irms (A)Typ | Marking |
|--------------------|-----------------|----------------|----------------------|------------|-------------|-------------|---------|
| BPXX000606301R0□00 | 1.0             | 30             | 100                  | 0.01385    | 4.2         | 4.5         | 1R0     |
| BPXX000606301R5□00 | 1.5             | 30             | 100                  | 0.0190     | 4.0         | 4.0         | 1R5     |
| BPXX000606302R2□00 | 2.2             | 30             | 100                  | 0.02375    | 3.8         | 3.8         | 2R2     |
| BPXX000606302R7□00 | 2.7             | 20,30          | 100                  | 0.032      | 3.7         | 3.7         | 2R7     |
| BPXX000606303R3□00 | 3.3             | 20,30          | 100                  | 0.036      | 3.6         | 2.75        | 3R3     |
| BPXX000606304R7□00 | 4.7             | 20,30          | 100                  | 0.045      | 3.3         | 2.5         | 4R7     |
| BPXX000606305R0□00 | 5.0             | 30             | 100                  | 0.045      | 3.3         | 2.5         | 5R0     |
| BPXX000606306R2□00 | 6.2             | 20,30          | 100                  | 0.056      | 2.5         | 2.4         | 6R2     |
| BPXX000606306R8□00 | 6.8             | 20,30          | 100                  | 0.056      | 2.5         | 2.4         | 6R8     |
| BPXX000606308R2□00 | 8.2             | 20,30          | 100                  | 0.070      | 2.3         | 2.3         | 8R2     |
| BPXX0006063010□00  | 10              | 20,30          | 100                  | 0.085      | 2.2         | 2.2         | 100     |
| BPXX0006063012□00  | 12              | 20,30          | 100                  | 0.10       | 1.9         | 1.9         | 120     |
| BPXX0006063015□00  | 15              | 20,30          | 100                  | 0.12       | 1.7         | 1.6         | 150     |
| BPXX0006063018□00  | 18              | 20,30          | 100                  | 0.14       | 1.6         | 1.5         | 180     |
| BPXX0006063022□00  | 22              | 20,30          | 100                  | 0.16       | 1.5         | 1.4         | 220     |
| BPXX0006063033□00  | 33              | 20,30          | 100                  | 0.22       | 1.3         | 1.1         | 330     |
| BPXX0006063047□00  | 47              | 20,30          | 100                  | 0.3        | 1.1         | 1.0         | 470     |

**Note: When ordering, please specify tolerance code. Tolerance: M=±20% , T=±30%**

- Operating temperature range - 40°C ~ 125°C(Including self - temperature rise)
- Isat for Inductance drop 30% from its value without current
- Irms for a 40°C temperature rise from 25°C ambient with current
- Rated DC Current : The less value which is Isat or Irms

## SMD Shielded Power Inductors – BPXX Series

### Standard Specifications

| Part Number        | Inductance (uH) | Tolerance (±%) | Test Frequency (kHz) | RDC (Ω)Max | Isat 1 (A)Typ | Isat 2 (A)Typ | Isat 3 (A)Typ | Irms (A)Typ | Marking |
|--------------------|-----------------|----------------|----------------------|------------|---------------|---------------|---------------|-------------|---------|
| BPXX00060635100□00 | 10              | 20,30          | 100                  | 0.10       | 2.3           | 2.4           | 2.5           | 1.8         | 100     |
| BPXX00060635220□00 | 22              | 20,30          | 100                  | 0.145      | 1.6           | 1.7           | 1.7           | 2.0         | 220     |
| BPXX00060635330□00 | 33              | 20,30          | 100                  | 0.18       | 1.3           | 1.4           | 1.5           | 1.3         | 330     |
| BPXX00060635470□00 | 47              | 20,30          | 100                  | 0.245      | 1.1           | 1.2           | 1.2           | 1.2         | 470     |
| BPXX00060635560□00 | 56              | 20,30          | 100                  | 0.280      | 1.0           | 1.0           | 1.1           | 1.07        | 560     |
| BPXX00060635680□00 | 68              | 20,30          | 100                  | 0.345      | 0.9           | 0.94          | 0.96          | 1.1         | 680     |
| BPXX00060635101□00 | 100             | 20,30          | 100                  | 0.375      | 0.46          | 0.52          | 0.54          | 0.9         | 101     |
| BPXX00060635221□00 | 220             | 20,30          | 100                  | 0.72       | 0.31          | 0.36          | 0.37          | 0.64        | 221     |
| BPXX00060635471□00 | 470             | 20,30          | 100                  | 1.6        | 0.22          | 0.25          | 0.26          | 0.43        | 471     |
| BPXX00060635681□00 | 680             | 20,30          | 100                  | 2.2        | 0.17          | 0.19          | 0.21          | 0.37        | 681     |
| BPXX00060635102□00 | 1000            | 20,30          | 100                  | 3.2        | 0.14          | 0.17          | 0.18          | 0.30        | 102     |
| BPXX00060635152□00 | 1500            | 20,30          | 100                  | 4.6        | 0.12          | 0.13          | 0.14          | 0.26        | 152     |
| BPXX00060635103□00 | 10000           | 20,30          | 1                    | 30.5       | 0.05          | 0.055         | 0.06          | 0.095       | 103     |

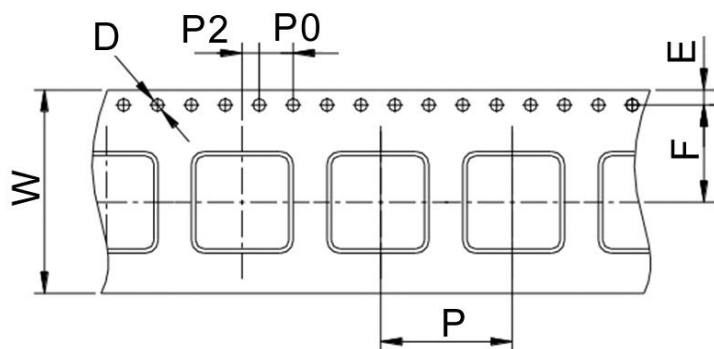
**Note: When ordering, please specify tolerance code. Tolerance: M=±20% , T=±30%**

- Operating temperature range - 40°C ~ 125°C(Including self - temperature rise)
- Isat 1 for Inductance drop 10% from its value without current
- Isat 2 for Inductance drop 20% from its value without current
- Isat 3 for Inductance drop 30% from its value without current
- I rms for a 40°C temperature rise from 25°C ambient with current
- Rated DC Current : The less value which is Isat1~3 or I rms

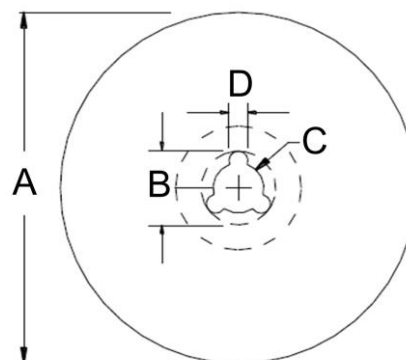
# SMD Shielded Power Inductors – BPXX Series

## Packaging Specifications

Tape Dimensions



Reel Dimensions



Dimensions in mm

| TYPE         | Tape Dimensions |     |      |     |    |    |    | Reel Dimensions |    |    |   | Quantity<br>PCS / Reel |
|--------------|-----------------|-----|------|-----|----|----|----|-----------------|----|----|---|------------------------|
|              | W               | D   | E    | F   | P  | P0 | P2 | A               | B  | C  | D |                        |
| BPXX00030308 | 12              | 1.5 | 1.75 | 5.5 | 8  | 4  | 2  | 178             | 20 | 13 | 2 | 1500                   |
| BPXX00030310 | 12              | 1.5 | 1.75 | 5.5 | 8  | 4  | 2  | 178             | 20 | 13 | 2 | 1500                   |
| BPXX00030312 | 12              | 1.5 | 1.75 | 5.5 | 8  | 4  | 2  | 178             | 20 | 13 | 2 | 1500                   |
| BPXX00030315 | 12              | 1.5 | 1.75 | 5.5 | 8  | 4  | 2  | 178             | 20 | 13 | 2 | 1000                   |
| BPXX00030320 | 12              | 1.5 | 1.75 | 5.5 | 8  | 4  | 2  | 178             | 20 | 13 | 2 | 1000                   |
| BPXX00040412 | 12              | 1.5 | 1.75 | 5.5 | 8  | 4  | 2  | 178             | 20 | 13 | 2 | 1000                   |
| BPXX00040418 | 12              | 1.5 | 1.75 | 5.5 | 8  | 4  | 2  | 178             | 20 | 13 | 2 | 1000                   |
| BPXX00040420 | 12              | 1.5 | 1.75 | 5.5 | 8  | 4  | 2  | 178             | 20 | 13 | 2 | 1000                   |
| BPXX00040430 | 12              | 1.5 | 1.75 | 5.5 | 8  | 4  | 2  | 178             | 20 | 13 | 2 | 600                    |
| BPXX00050515 | 12              | 1.5 | 1.75 | 5.5 | 8  | 4  | 2  | 178             | 20 | 13 | 2 | 1000                   |
| BPXX00050520 | 12              | 1.5 | 1.75 | 5.5 | 8  | 4  | 2  | 178             | 20 | 13 | 2 | 900                    |
| BPXX00050530 | 12              | 1.5 | 1.75 | 5.5 | 8  | 4  | 2  | 330             | 20 | 13 | 2 | 2000                   |
| BPXX00060620 | 16              | 1.5 | 1.75 | 7.5 | 12 | 4  | 2  | 330             | 20 | 13 | 2 | 2000                   |
| BPXX00060625 | 16              | 1.5 | 1.75 | 7.5 | 12 | 4  | 2  | 330             | 20 | 13 | 2 | 1500                   |
| BPXX00060630 | 16              | 1.5 | 1.75 | 7.5 | 12 | 4  | 2  | 330             | 20 | 13 | 2 | 1500                   |
| BPXX00060635 | 16              | 1.5 | 1.75 | 7.5 | 12 | 4  | 2  | 330             | 20 | 13 | 2 | 1500                   |