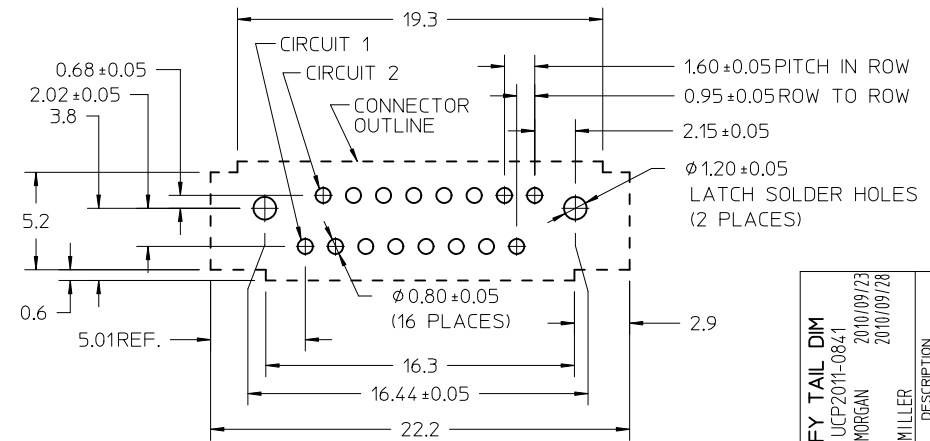


NOTES:

- MATERIALS:  
HOUSING: POLYAMIDE, GLASS FILLED, UL94-0, COLOR: BLACK.  
TERMINAL: COPPER ALLOY.  
LATCHES: STAINLESS STEEL.
- FINISHES: TERMINAL SELECTIVE GOLD (Au), FLASH OVER PALLADIUM/NICKEL (Pd/Ni) THICKNESS 1.00 MICROMETERS MINIMUM IN CONTACT AREA; SELECTIVE TIN (Sn), THICKNESS 1.91 MICROMETERS MINIMUM IN SOLDER TAIL AREA; NICKEL (Ni) UNDERPLATE OVERALL.
- PRODUCT SPECIFICATION: PS-44828-001.
- PLEASE REFER TO MOLEX APPLICATION SPECIFICATION AS-44828-001 FOR RECOMMENDATIONS FOR BEST DESIGN PRACTICES FOR CRADLE DESIGNS AND MATING INFORMATION TO THE HANDYLINK RECEPTACLE SERIES 44828.
- PACKAGED IN TRAYS PK-45593-001.



CLARIFY TAIL DIM EC NO: UCP2011-0841 DRW:DMORGAN 2010/09/23 CHKD: 2010/09/28 APPR:SMILLER	QUALITY SYMBOLS	GENERAL TOLERANCES (UNLESS SPECIFIED)		DIMENSION STYLE <b>MM ONLY</b>		SCALE <b>5:1</b>	DESIGN UNITS <b>METRIC</b>	THIRD ANGLE PROJECTION	
	▽=0	mm	INCH	DRAWN BY	DATE	TITLE			
	▽=0	4 PLACES ± --- ± ---	DMORGAN	2010/02/01	0.8MM HANDYLINK PLUG				
	▽=0	3 PLACES ± --- ± ---	CHECKED BY	DATE	PCB THRU-HOLE MEDIUM				
		2 PLACES ± 0.10 ± ---	MIBARRA	2010/02/01	TAIL LENGTH ASSEMBLY				
		1 PLACE ± 0.13 ± ---	APPROVED BY	DATE	MOLEX INCORPORATED				
		ANGULAR ± 1/2°	SMILLER	2010/03/31	MATERIAL NO. <b>45593-5000</b>				
			DRAFT WHERE APPLICABLE MUST REMAIN WITHIN DIMENSIONS		DOCUMENT NO. <b>SD-45593-500</b>		SHEET NO. <b>1 OF 1</b>		
A1	REV	THIS DRAWING CONTAINS INFORMATION THAT IS PROPRIETARY TO MOLEX INCORPORATED AND SHOULD NOT BE USED WITHOUT WRITTEN PERMISSION							